

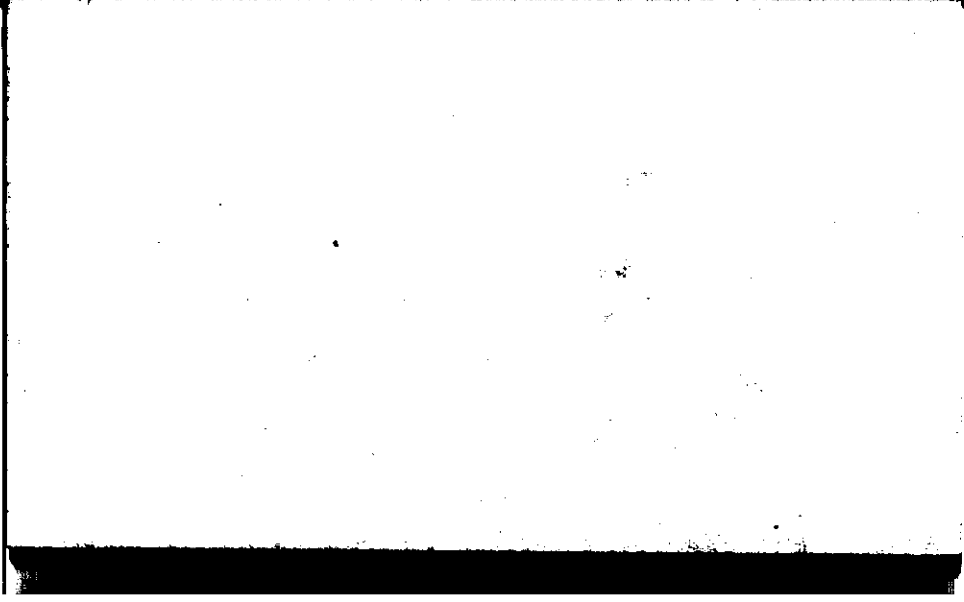
STATE COLLEGE, Pa. Date

OCT - 1 1943

Time

0700

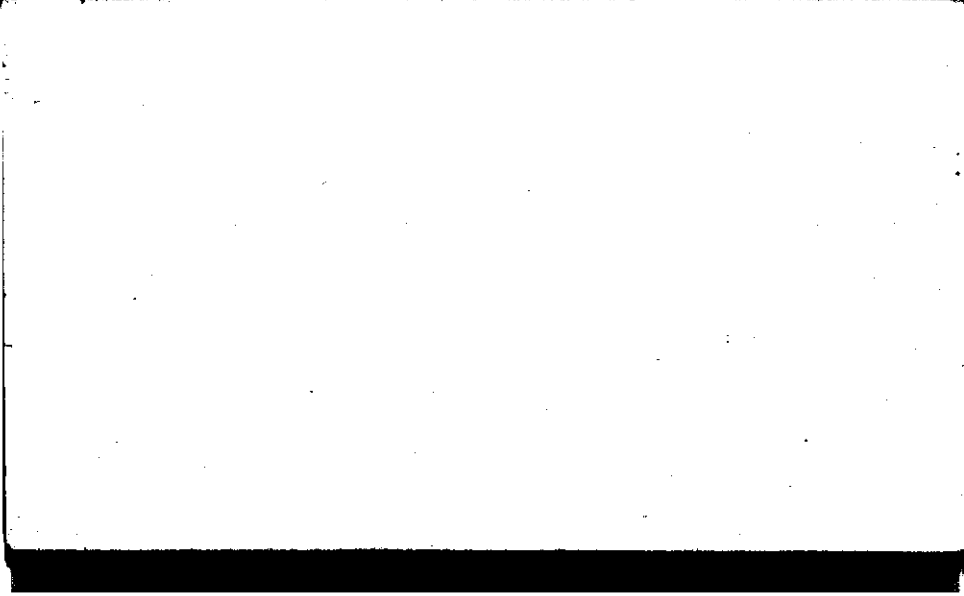
Max. 71	Wind F NNE 3	Barom. t 74	General Obs. 5p. rept. 1300
Min. 51	Vis. km. .7	p 28.91	0000 - 0100 1200 - 1900 101'
Dry 55	Clouds 10	p(red.) 28.79	0100 - 0200 1900 - 2000 0°
Wet 54.5	Ns		0300 9° - 0700 2200 - 2400 9
R.H. 97		Morn. Drizzle	Foren. Rain
Precip. 13.5 mm / .53 in.		Noon Rain	Aftern. Rain
Snowfall / -Depth — in / — in.		Eve. Rain	Night Rain



STATE COLLEGE, Pa. Date OCT - 2 1943

Time  
0700

Max. 61	Wind F NW 3	Barom. t 74	General Obs. ∞	
Min. 55	Vis. km. 15	P 28.82		
Dry 59	Clouds 8	p(red.) 48.70		
Wet 56	st, sc, cu			
R.H. 83		Morn. cldy	Foren. cldy - pt cldy	
Precip. 8.8 mm/0.35 in.		Noon cldy	Aftern. cldy	
Snowfall/-Depth - in/ - in.		Eve. pt cldy	Night clear	



STATE COLLEGE, Pa. Date

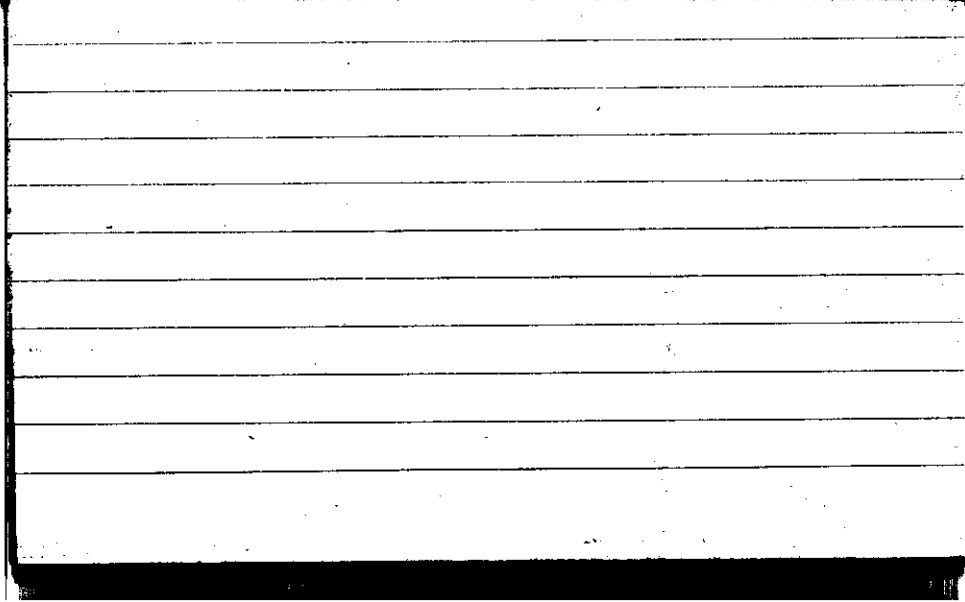
OCT - 3 1943

Time

0700

Max. 64	Wind F calm	Barom. t 70	General Obs. C fil	
Min. 42	Vis. km. 18	p 28.97		
Dry 44	Clouds 9	p(red.) 28.88		
Wet 43.5	sc			
R.H. 92		Morn. city	Foren. city	
Precip. - mm/ - in.		Noon pt city	Aftern. pt city	
Snowfall/-Depth - in/ - in.		Eve. Fair	Night clear → pt city	

CLT



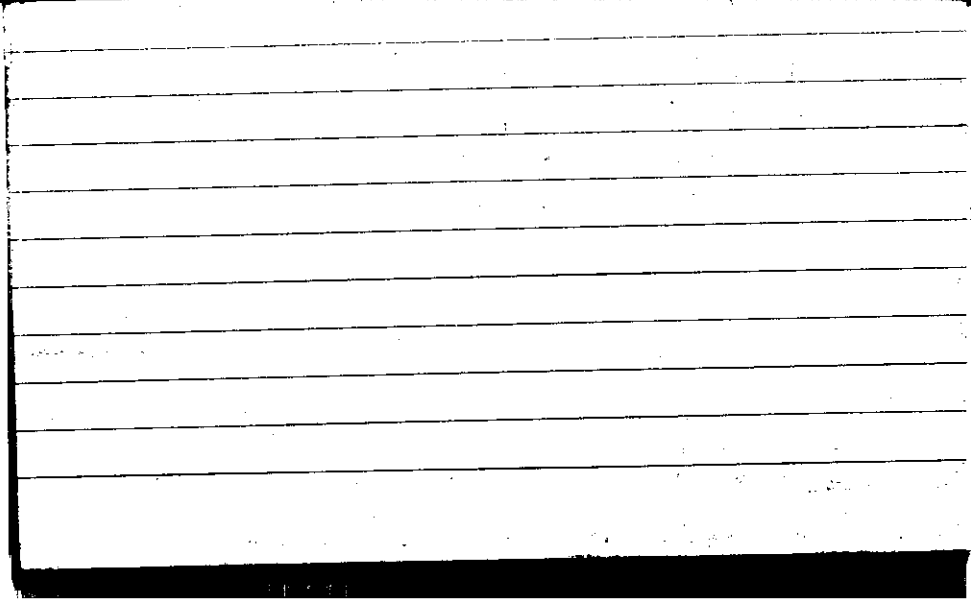
STATE COLLEGE, Pa. Date

OCT - 4 1943

Time

0700

Max. 58	Wind F N 2	Barom. t 69	General Obs.	
Min. 41	Vis. km. 2.5	p 29.12		
Dry 41	Clouds < 1	p(red.) 29.01		
Wet 30.5 38	Sc, Fc			
R.H. 80		Morn. Fair → Clear	Foren. Clear → Fair → Pthly Cldy	
Precip. — mm / — in.		Noon Pthly Cldy	Aftern. Pthly Cldy	
Snowfall / -Depth — in / — in.		Eve. Pthly Cldy → Fair	Night Fair → Clear	





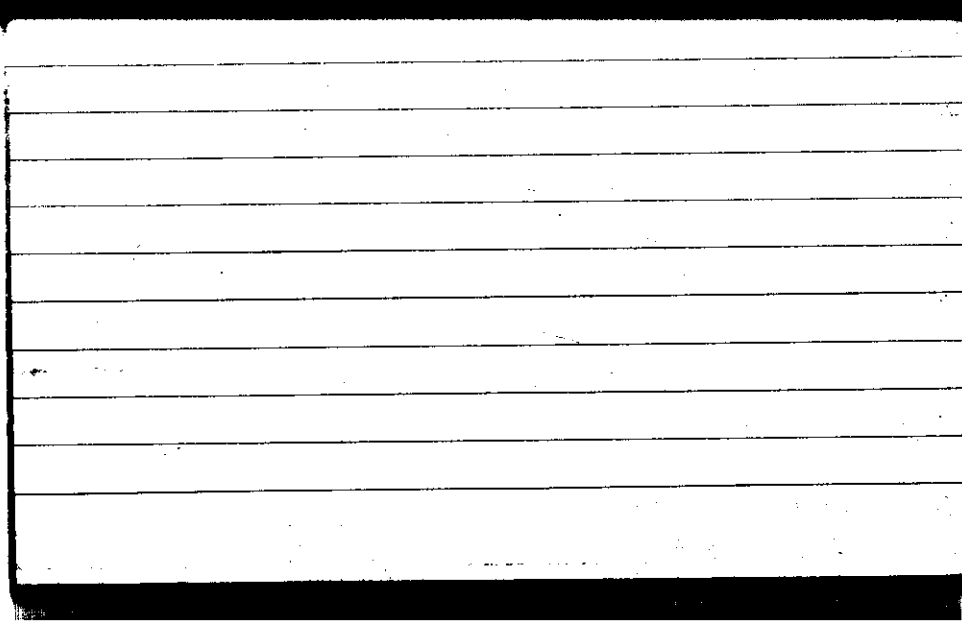
STATE COLLEGE, Pa. Date

OCT - 5 1943

Time  
0700

Max. 58	Wind F WSW 2	Barom. ± 66	General Obs. 4'	
Min. 33	Vis. km. 16	p 29.21		
Dry 33	Clouds <1	p(red.) 29.11		
Wet 32	R. cent/hour			
R.H. 95		Morn. Clear	Foren. ptly clgy	
Precip. — mm/ — in.		Noon ptly clgy	Aftern. ptly clgy to clear	
Snowfall/-Depth — in/ — in.		Eve. clear	Night clear	

H.S.



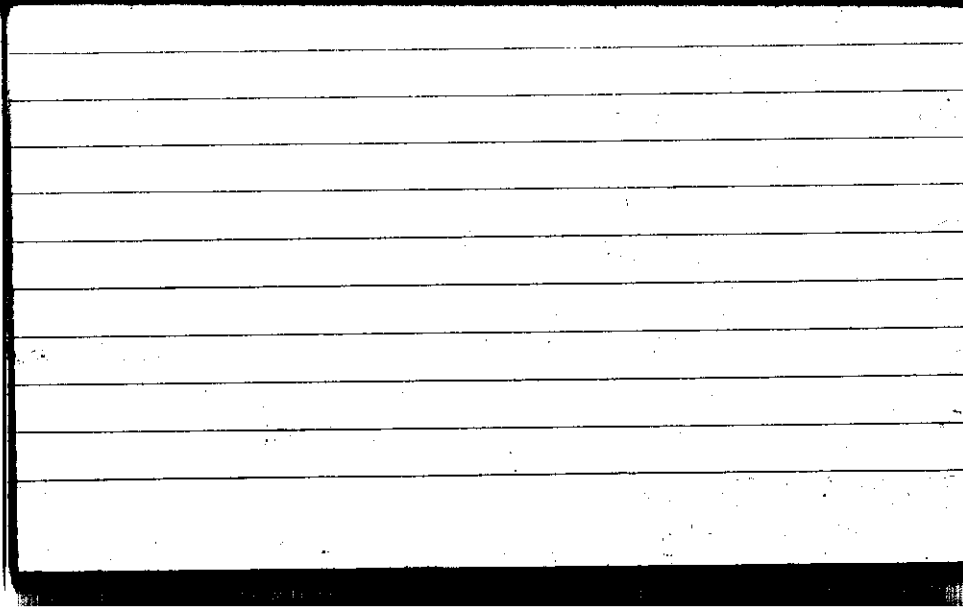
STATE COLLEGE, Pa. Date

OCT -6 1943

Time

0700

Max. 60	Wind F NE 1	Barom. t 69	General Obs. 0 W	
Min. 32	Vis. km. 8	p 29.29		
Dry 33	Clouds	p(red.) 29.18		
Wet 32	/			
R.H. 90		Morn. clear	Foren. clear	
Precip. - mm/ - in.		Noon clear	Aftern. clear	
Snowfall/-Depth - in/ - in.		Eve. clear	Night clear	



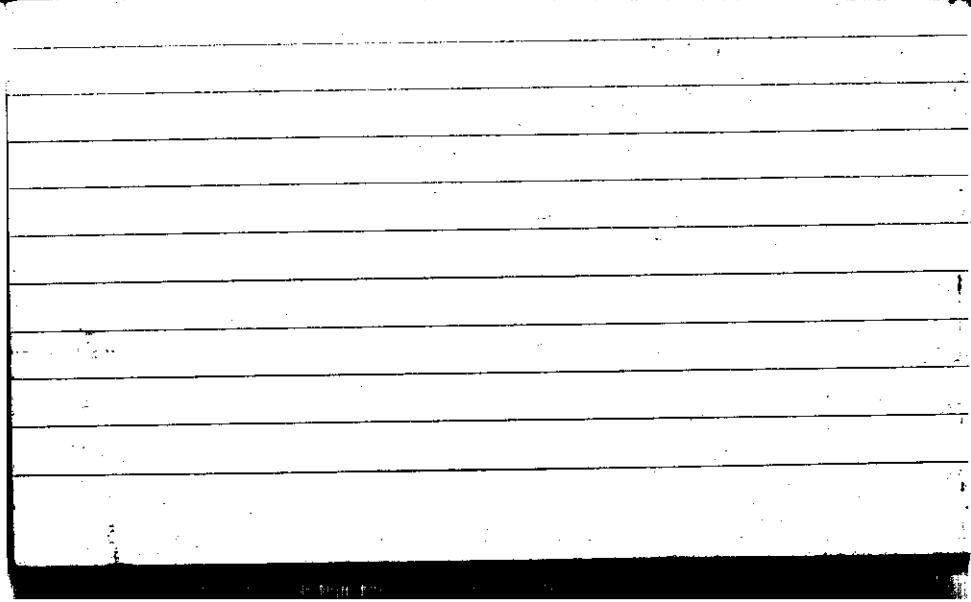
STATE COLLEGE, Pa. Date

OCT -7 1943

Time

0700

Max. 70	Wind F W 1	Barom. t 73	General Obs. <i>ci fl</i> <i>ci floe</i> <i>ci dnm.</i>	
Min. 33	Vis. km. 8	p 29.14		
Dry 47	Clouds < 1	p (red.) 29.02		
Wet 42	G. pol. G. vent G. flacc.			
R.H. 69		Morn. Fair → Clear	Foren. clear <i>hazy</i>	
Precip. — mm/ — in.		Noon Clear <i>hazy</i>	Aftern. clear, <i>hazy</i>	
Snowfall/-Depth — in/ — in.		Eve. fair <i>ci, hazy</i>	Night fair <i>hazy</i>	



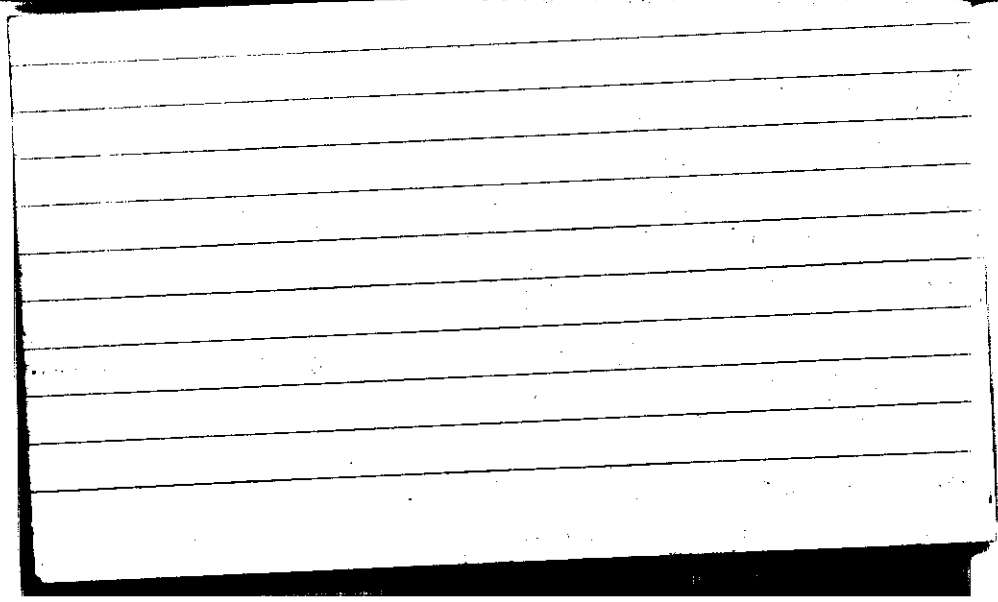
STATE COLLEGE, Pa. Date

OCT - 8 1943

Time

0700

Max. 77	Wind F WSW 2	Barom. ± 74	General Obs. 2° 50'	
Min. 44	Vis. km. 9	p 29.00		
Dry 48	Clouds X	p(red.) 28.88		
Wet 45				
R.H. 80		Morn. Clear	Foren. clear	
Precip. — mm/ — in.		noon clear	Aftern. clear	
Snowfall/-Depth — in/ — in.		Eve. clear	Night clear	
N.B.				





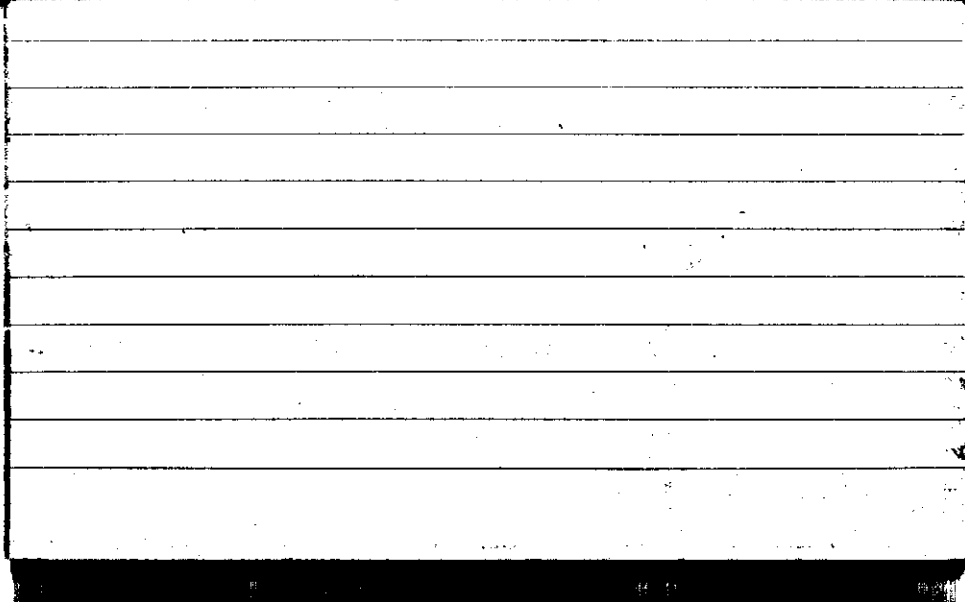
STATE COLLEGE, Pa. Date

OCT - 9 1943

Time

0700

Max. 80	Wind F WSW 2t 64	Barom. 28.64	General Obs. ∞'	ci not cc a fe
Min. 47	Vis. km. 12	P 28.71		
Dry 50	Clouds ca, Ac	p (red.) 28.62		1930-1945 (10) 2300
Wet				
R.H. 65		Morn. Fair haze	Foren. fair	
Precip. - mm/ - in.		Noon fair	Aftern. fair to ptly clgy ch limit	
Snowfall/-Depth - in/ - in.		Eve. ptly clgy	Night ptly clgy	

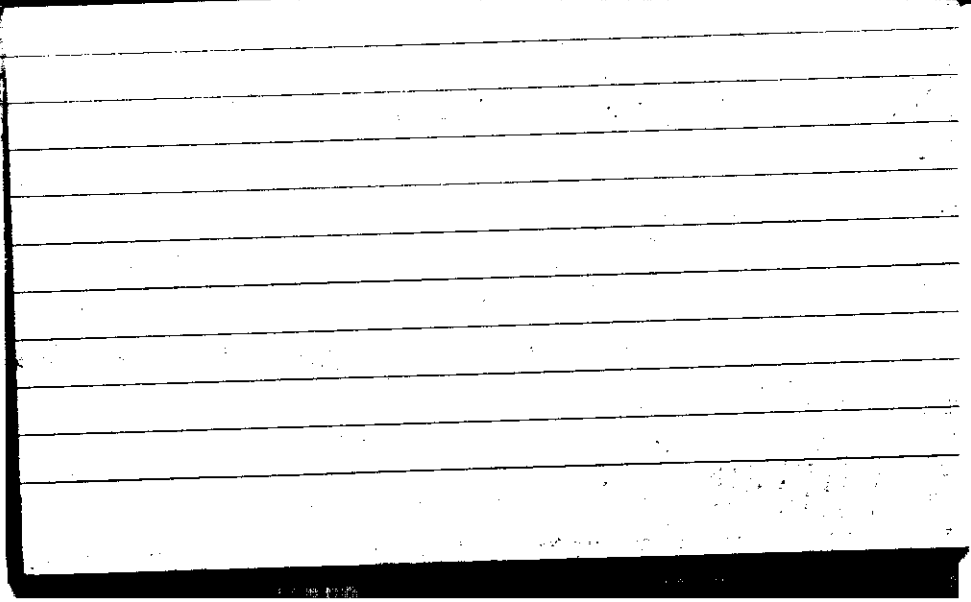


STATE COLLEGE, Pa. Date

OCT 10 1943

Time  
0700

Max. 74	Wind F N 3	Barom. t 73	General Obs.	
Min. 40	Vis. km. 50	p 29.00		
Dry 40	Clouds 4	p (red.) 28.88		
Wet 37	Ac Ac lent Ac			
R.H. 76	Co, Ci, St	Morn. <i>ptly dety</i>	Foren. <i>clear</i>	
Precip. — mm/ — in.		Noon <i>clear</i>	Aftern. <i>clear</i>	
Snowfall/-Depth — in/ — in.		Eve. <i>clear-fair</i>	Night <i>Fair → clear</i>	



STATE COLLEGE, Pa. Date

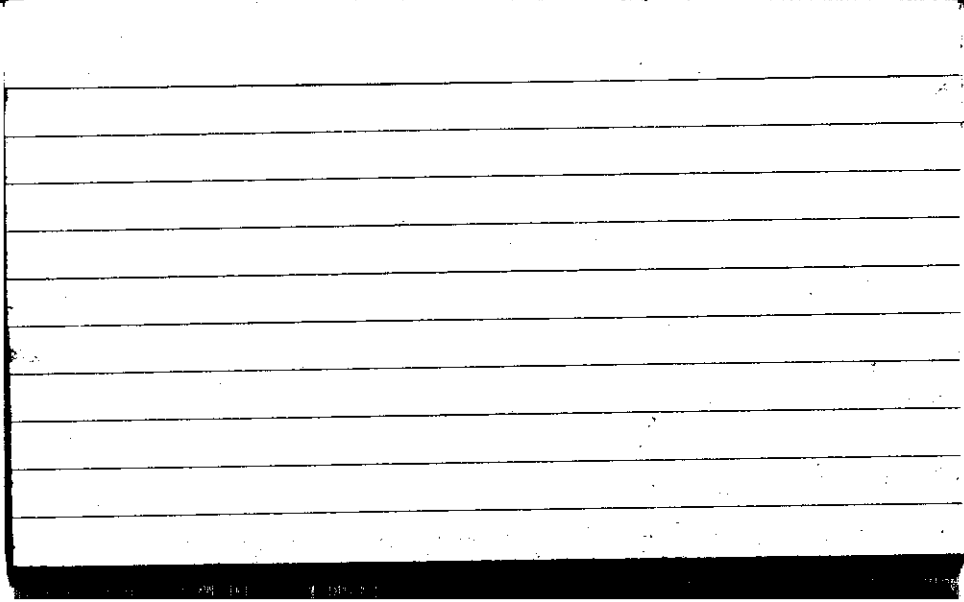
OCT 11 1943

Time

0700

Max. 59	Wind F SSW 1	Barom. ± 72	General Obs. <i>ci</i> <i>ci den.</i>	
Min. 40	Vis. km. 19	29.30		
Dry 40	Clouds < 1	p(red.) 29.18		
Wet 38.5	Fc			
R.H. 88		Morn. Clear	Foren. <i>ci den</i> Clear → Fair	
Precip. — mm/ — in.		Noon Fair → Clear	Aftern. Clear	
Snowfall/-Depth — in/ — in.		Eve. Clear	Night Clear	

A.B.



STATE COLLEGE, Pa. Date

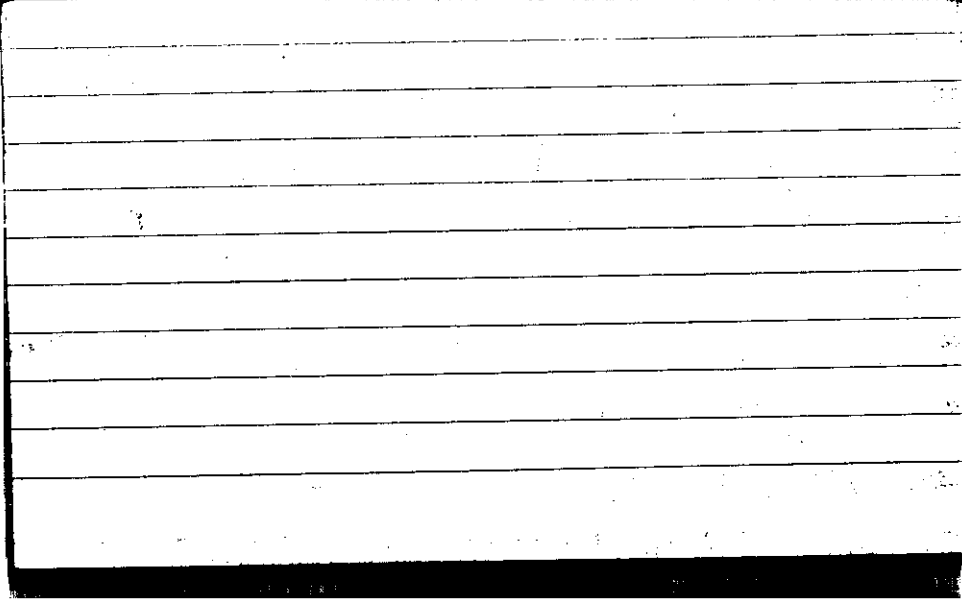
OCT 12 1943

Time

0700

Max. 61	Wind F E 1	Barom. t 78	General Obs. <del>W</del> W' a fi u p a p a	
Min. 35	Vis. km. 18	P 29.20		
Dry 35	Clouds	p(red.) 29.07		
Wet 34	X			
R.H. 95		Morn. Clear	Foren. Clear	
Precip. — mm/ — in.		Noon Clear	Aftern. Clear	
Snowfall/-Depth — in/ — in.		Eve. Clear	Night Clear	

A.C.





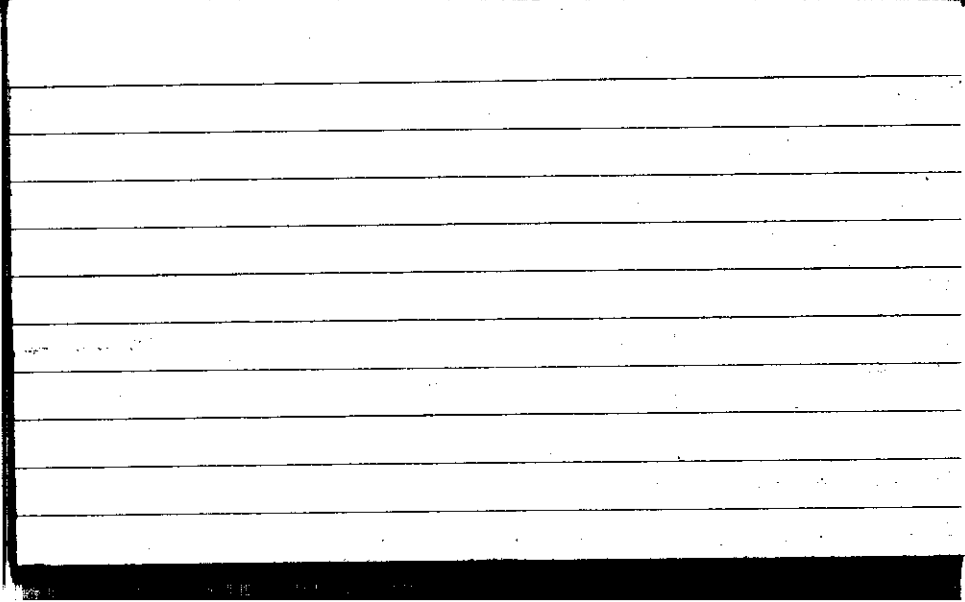
STATE COLLEGE, Pa. Date

OCT 13 1943

Time  
0700

Max. 71	Wind F ENE 1	Barom. t 68	General Obs. $\equiv$ 24' <i>ci flu</i>	
Min. 35	Vis. km. .5	p 29.08	① 1100 - 1400 <i>ci pol</i>	
Dry 38.5 38	Clouds /	p(red.) 28.98	<i>ci flu</i>	
Wet 38			<i>ci pra</i>	
R.H. 97		Morn. Foggy Clear	Foren. Clear	
Precip. — mm/ — in.		Noon Clear → Fair	Aftern. Fair	
Snowfall/-Depth — in/ — in.		Eve. Fair	Night Fair	

A.P.



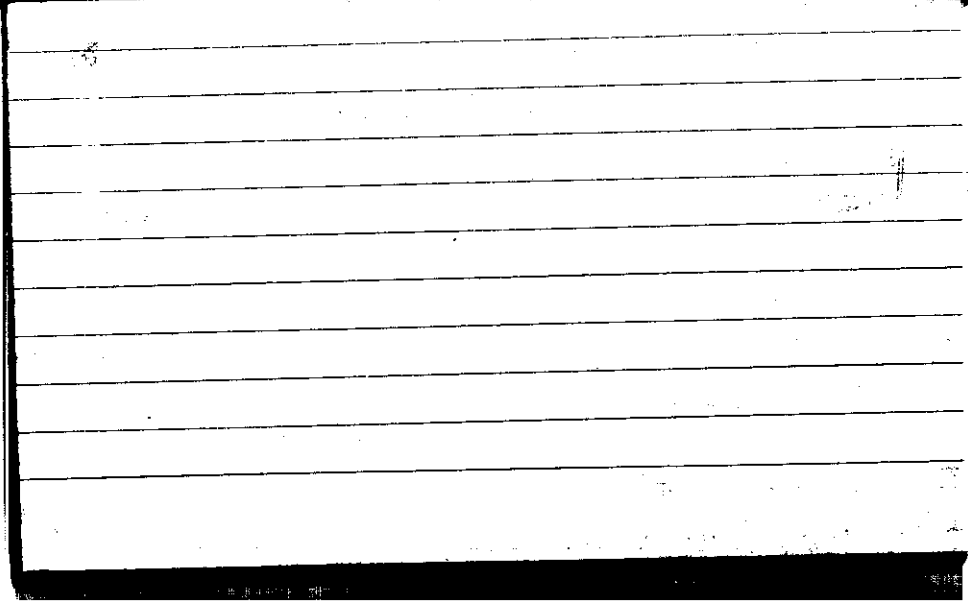
STATE COLLEGE, Pa. Date

OCT 14 1943

Time

0200

Max. 69	Wind F S 3	Barom. t 74	General Obs. 0720 109-2400
Min. 37	Vis. km. 20	p 28.92	
Dry 58	Clouds 2	p (red.) 28.80	
Wet 53	Ac 1 ent Fc		
R.H. 73		Morn. Fair → Pthly Cldy As in	Foren. Pthly Cldy → Cldy → Ovc. Rain
Precip. — mm/ — in.		Noon Rain OVC.	Aftern. OVC. Rain
Snowfall/-Depth — in/ — in.		Eve. OVC.	Night OVC.
A.O.			



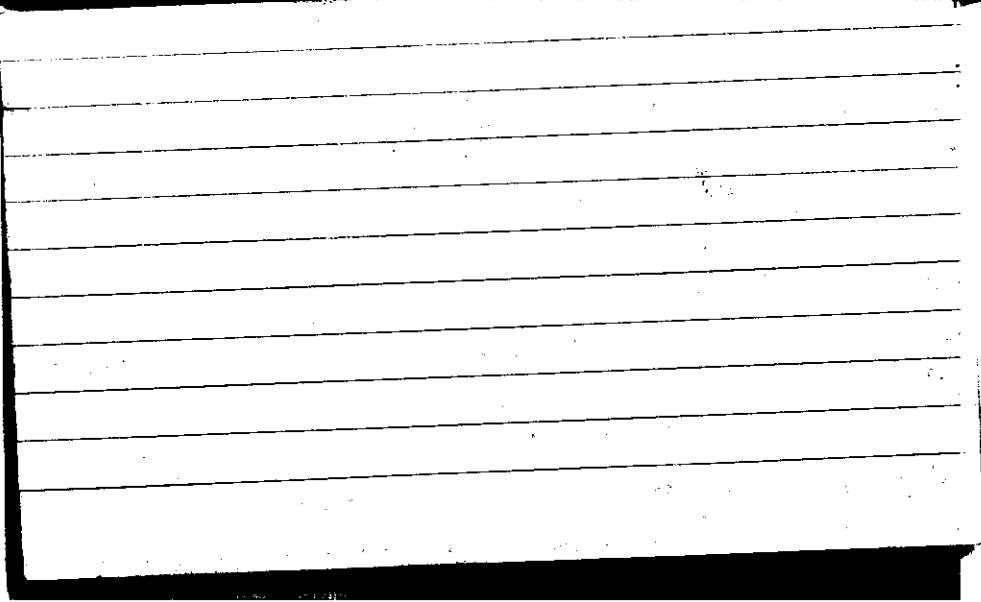
STATE COLLEGE, Pa. Date

OCT 15 1943

Time

0700

Max. 64	Wind F NNE 2	Barom. t 74	General Obs. <u>sp. R. 1500 AB</u> 0320 <u>0</u> - 1420 1950 - 2400 + 0° <u>ci fl ac</u> <u>in fls</u>	
Min. 57	Vis. km. .2	p 28.94		
Dry 59	Clouds X	p (red.) 28.82		
Wet %: 56				
R.H. 97		Morn. Fog + Rain	Foren. Rain, over.	
Precip. 14.5 mm / 0.57 in.		Noon Rain, over.	Aftern. dry	
Snowfall / -Depth — in / — in. A.B.		Eve. over rain	Night over rain	



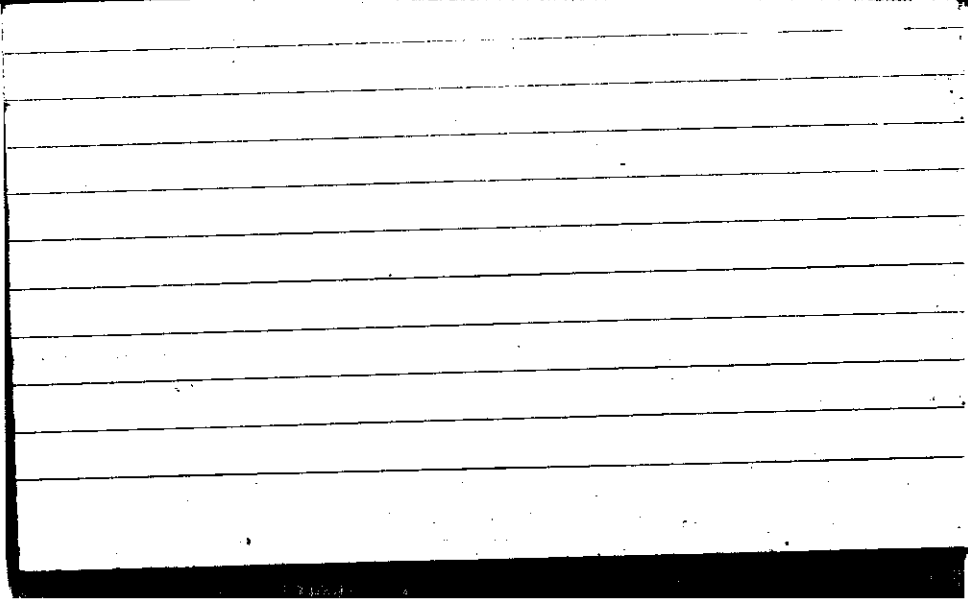
STATE COLLEGE, Pa. Date

OCT 16 1943

Time

0700

Max. 61	Wind F SSW 2	Barom. t 24	General Obs.	
Min. 56	Vis. km. 11	28.42	0° 0000 - 0420	SpWR. 1200CLT SpWR. 1300CLT
Dry 59	Clouds 10	p (red.) 28.30	1320 <sup>0</sup> - 1400	1328TB
Wet 58	SEF, S-		1400 <sup>0</sup> - 1540	
R.H. 94		Morn. OVC.	Foren. OVC	
Precip. 12.5 mm / 0.49 in.		Noon OVC Thunder Morn	Aftern. OVC - cloudy	
Snowfall / -Depth - in / - in.		Eve. OVC	Night OVC	





STATE COLLEGE, Pa. Date

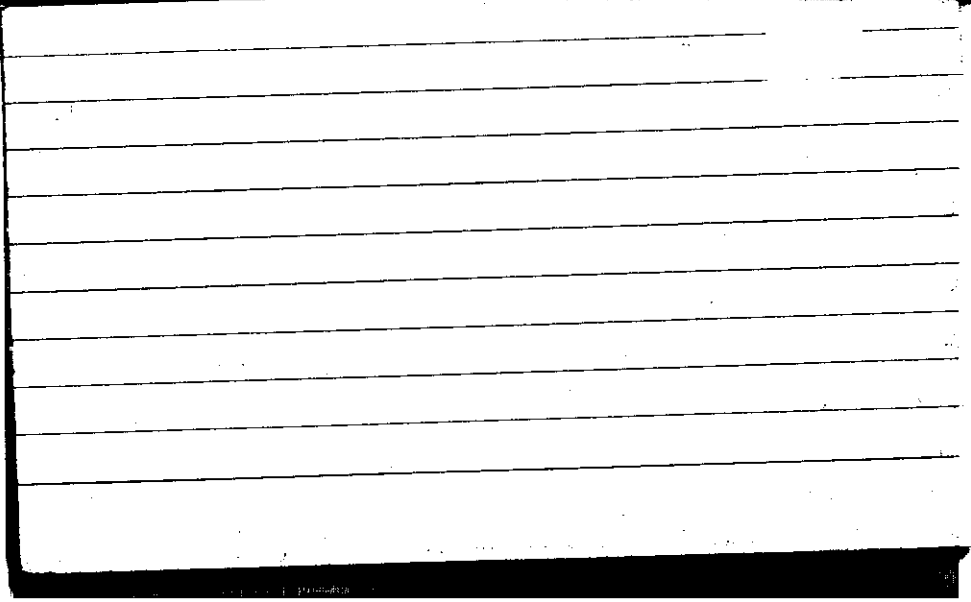
OCT 17 1943

Time

0700

Max. 65	Wind F WSW 5	Barom. t 66	General Obs.	
Min. 36	Vis. km. 12	P 28.47	0710 5° - 0715	
Dry 37	Clouds 10	p(red.) 28.37	0900 5° - 0910	
Wet 34	St, Sc		1115 0° - 1120	
R.H. 74			1400-1500 p	
Precip. 17.0 mm/0.67 in.			Morn. ovc	Foren. ovc
Snowfall/-Depth - in/ - in.			Noon ovc	Aftern. ovc
			Eve. ovc	Night ovc

SET



STATE COLLEGE, Pa. Date

OCT 18 1943

Time  
0700

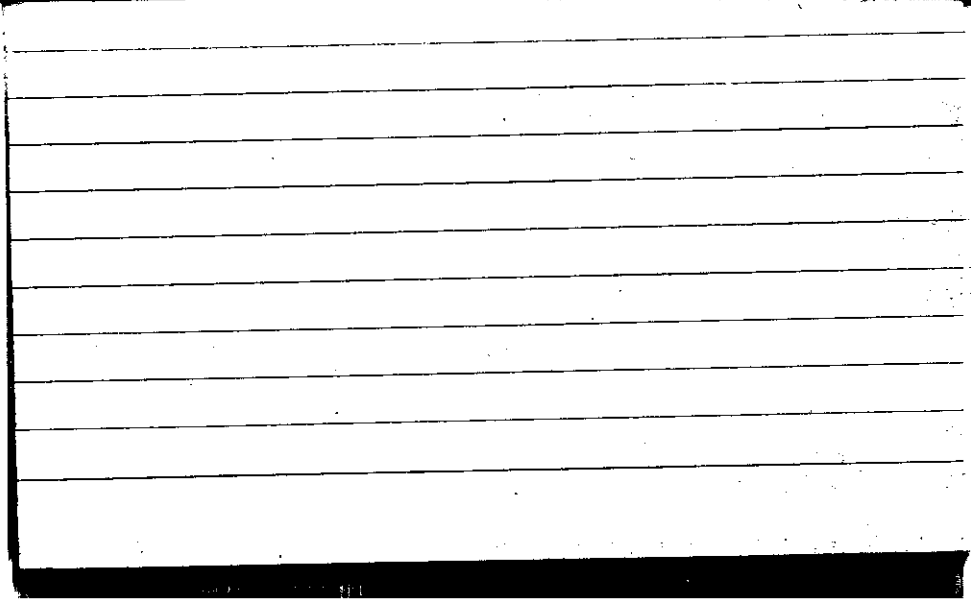
Max. 42	Wind F SW 3	Barom. t 64	General Obs. 00
Min. 36	Vis. km. 15	p 28.66	1150 - 1230 °
Dry 37	Clouds 7	p(red.) 28.57	1230 - 2000 °
Wet 33	Ci, pol. cs, cc. As, Ac		2000 - 2100 °
R.H. 61	Cu	Morn. Pt. cldy	Foren. cldy
Precip. T mm / T in.		Noon ovc	Aftern. ovc
Snowfall / -Depth - in / - in.		Eve. ovc	Night ovc



STATE COLLEGE, Pa. Date OCT 19 1943

Time  
8700

Max. 44	Wind F W 2	Barom. t 69	General Obs.	
Min. 37	Vis. km. 18	P 28.69	1410 - 1420 °	
Dry 39	Clouds 9	p(red.) 28.59	1850 - 1920 °	
Wet	Fst, Fc, Cs, As		2250 - 2300 °	
R.H. 82		Morn. cldy	Foren. cldy	
Precip. 5.0 mm/0.20 in.		Noon cldy	Aftern. cldy	
Snowfall/-Depth — in/ — in.		Eve. ovc	Night ovc	
CLT				



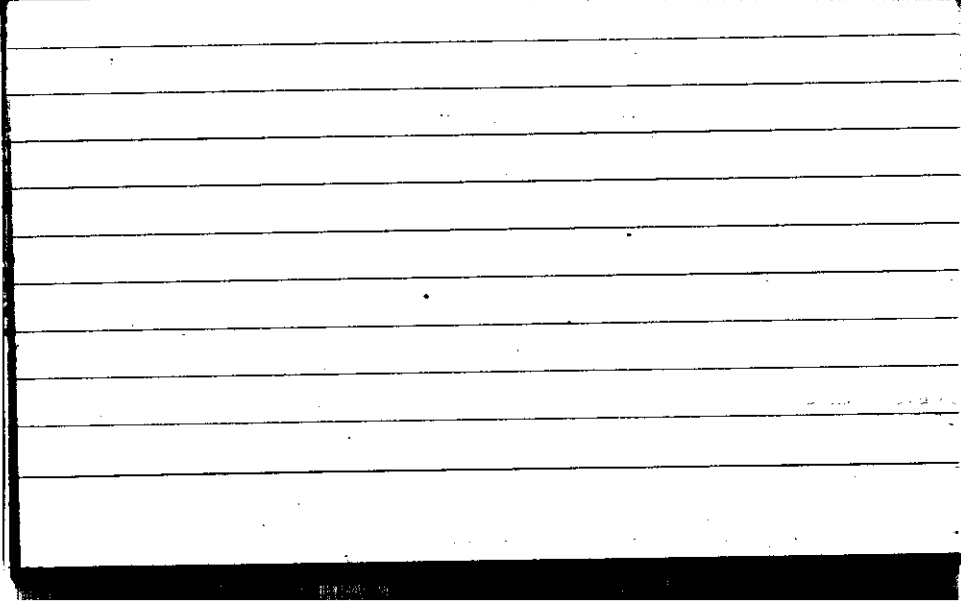
STATE COLLEGE, Pa. Date

OCT 20 1943

Time

0700

Max. 44	Wind F W 1	Barom. t 67	General Obs.	
Min. 37	Vis. km. 20	p 28.83	0000-0230/9'	
Dry 38	Clouds 4	p(red.) 28.73		
Wet 35 <sup>37</sup>	Cu, Fc			
R.H. 83		Morn. Pt cldy	Foren.	clear
Precip. T mm/ T in.		Noon clear	Aftern.	clear
Snowfall/-Depth - in/ - in.		Eve. clear	Night	clear





STATE COLLEGE, Pa. Date

OCT 21 1943

Time

0700

Max. 58	Wind F W 2	Barom. t 70	General Obs. ○ ◡	
Min. 35	Vis. km. 20	p 28.89	2345-2400 ◡	
Dry 35	Clouds 0	p (red.) 28.78		
Wet 36 34				
R.H. 82		Morn. clear	Foren. clear	
Precip. - mm/ - in.		Noon clear	Aftern. clear	
Snowfall/-Depth in/ in.		Eve. pty cloudy	Acc AC	Night cldy - ovc
ECT				

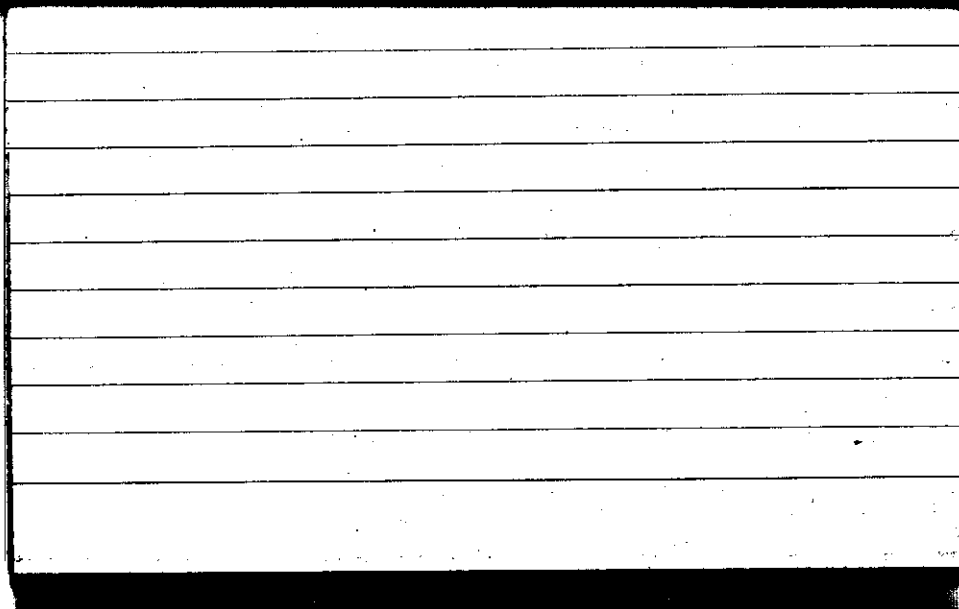


STATE COLLEGE, Pa. Date OCT 22 1943

Time  
0700

Max. 67	Wind F W 3	Barom. t 72	General Obs.	
Min. 35	Vis. km. 5	P 28.56	0000 - 0130	2 130100-0315
Dry 54	Clouds 10	p (red.) 28.45	0810 - 1500 19°	
Wet 52	st, Fs		1500 - 1600 16°	
R.H. 88		Morn. OVC	Foren. cldy	
Precip. 3.0 mm / 0.12 in.		Noon cldy	Aftern. cldy	
Snowfall / -Depth - in / - in.		Eve. OVC III	Night OVC	

CLT



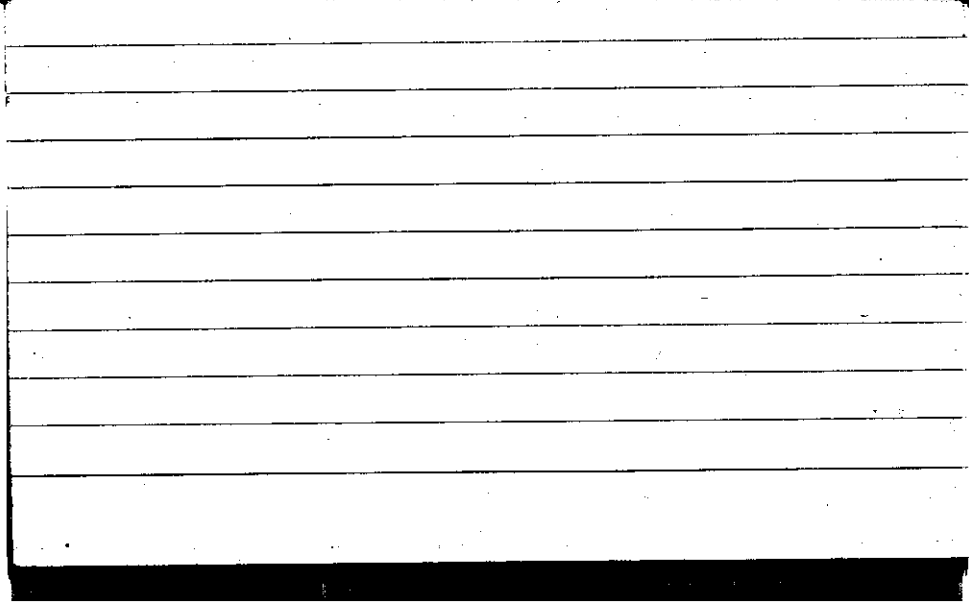
STATE COLLEGE, Pa. Date

OCT 23 1943

Time

0700

Max. 54	Wind F W 2	Barom. t 70	General Obs.	
Min. 47	Vis. km. 12	p 28.74	0700 - 1730   9° 1730 - 2000   0°	
Dry 47	Clouds 10	p (red.) 28.63		
Wet 45	Sc, St, Fc			
R.H. 86		Morn. OVC	Foren. OVC	
Precip. T mm / T in.		Noon OVC	Aftern. OVC	
Snowfall / -Depth - in / - in.		Eve. OVC	Night	Udy



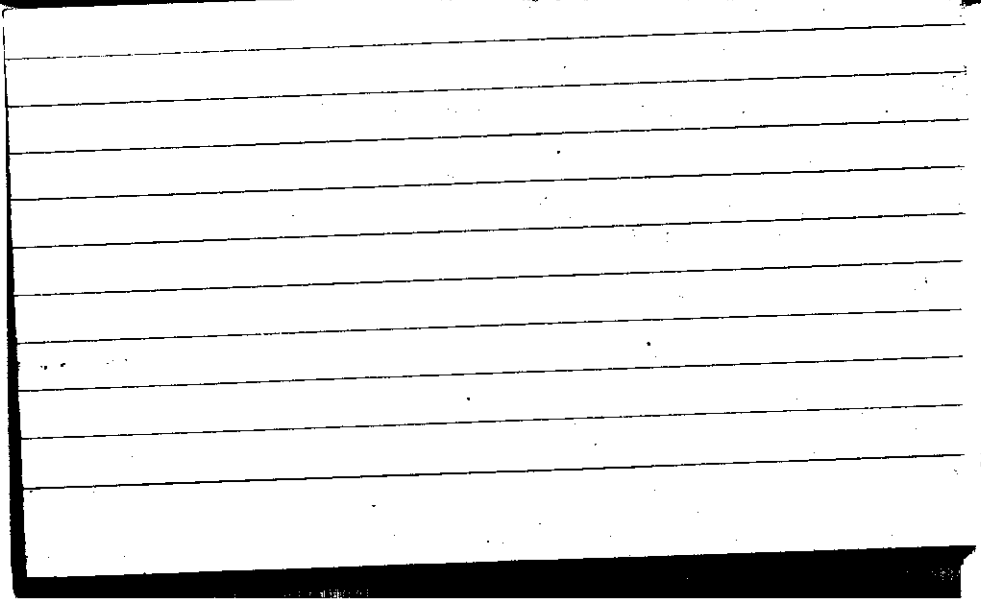
STATE COLLEGE, Pa. Date

OCT 24 1943

Time

0700

Max. 49	Wind F W 2	Barom. t 67	General Obs. 1430-1800 10°1	
Min. 42	Vis. km. 18	P 28.81		
Dry 43	Clouds 10	p(red.) 28.71		
Wet 39	S, As			
R.H. 70		Morn. <i>cldy</i>	Foren. <i>cldy</i>	
Precip. T mm / T in.		Noon <i>cldy</i>	Aftern. <i>cldy</i>	
Snowfall/-Depth in / in.		Eve. <i>cldy</i>	Night <i>cldy</i>	



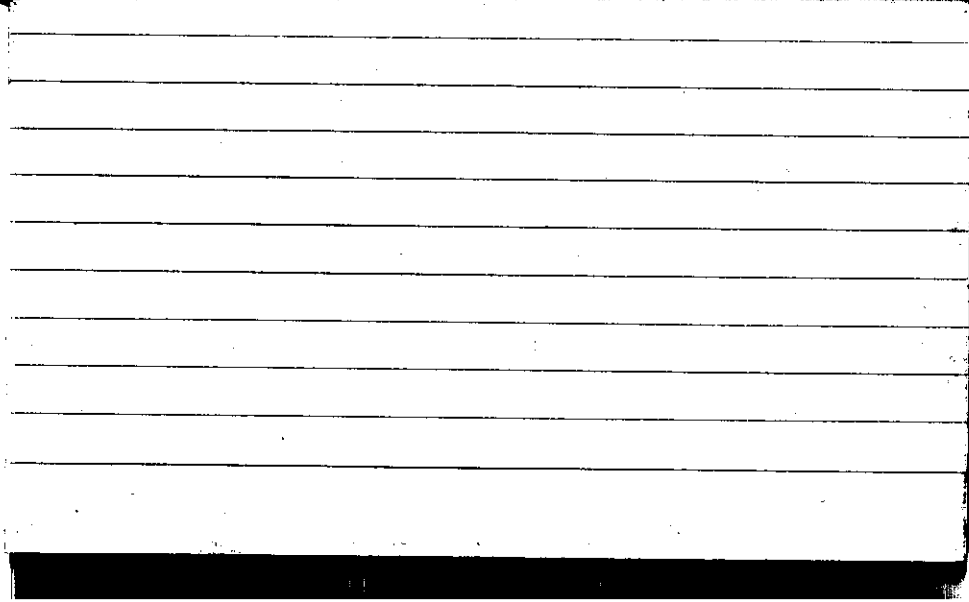


STATE COLLEGE, Pa. Date

OCT 25 1943

Time  
0700

Max. 48	Wind F E 2	Barom. t 67	General Obs. 0120-0245 10°/	
Min. 39	Vis. km. 5	p 28.84	0245-0630 0°	
Dry 39	Clouds 10	p(red.) 28.74	0630-0730 10°/	
Wet 39	St, Sc, Ns.		0730-1730 10°/	
			1730-1745 10°/	
R.H. 100		Morn. orc	Foren. orc	
Precip. 1.7 mm/0.07 in.		Noon orc	Aftern. orc	
Snowfall/-Depth - in/ - in.		Eve. orc	Night orc	
CLT				

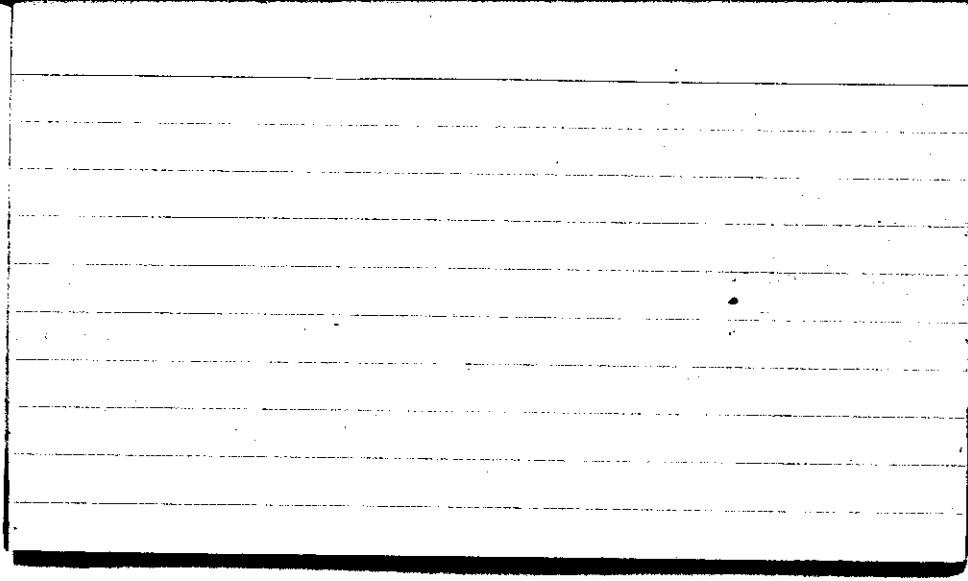


STATE COLLEGE, Pa. Date OCT 26 1943

Time  
0700

Max. 40	Wind F NE 3	Barom. t 66	General Obs. SPR. 1900-2400	
Min. 36	Vis. km. 6	p 28.72	0000-0700 W <sup>0</sup>	
Dry 38	Clouds 10	p (red.) 28.72	0700-1730 •	
Wet 38	St, Sc, Ns		1730-1900 •	
R.H. 100		Morn. OVC	Foren. OVC	
Precip. 3.7 mm/0.20 in.		Noon OVC	Aftern. OVC	
Snowfall/-Depth - in/- in		Eve. OVC	Night OVC	

CLT



STATE COLLEGE, Pa. Date **OCT 27 1943**

Time  
**0700**

Max. <b>40</b>	Wind F <b>NW 1</b>	Barom. t <b>66</b>	General Obs. <b>0000-0130 0°</b>	<b>S.P.R. 130052</b>
Min. <b>37</b>	Vis. km. <b>4</b>	p <b>28.62</b>	<b>0740-0800 9°</b>	
Dry <b>39</b>	Clouds <b>10</b>	p(red.) <b>28.52</b>		
Wet <b>39</b>	st			
R.H. <b>100</b>		Morn. <b>ovc</b>	Foren. <b>ovc</b>	
Precip. <b>25.9 mm / 1.0 in.</b>		Noon <b>ovc</b>	Aftern. <b>ovc → cldy</b>	
Snowfall/-Depth <b>- in / - in.</b>		Eve. <b>ovc</b>	Night <b>ovc</b>	

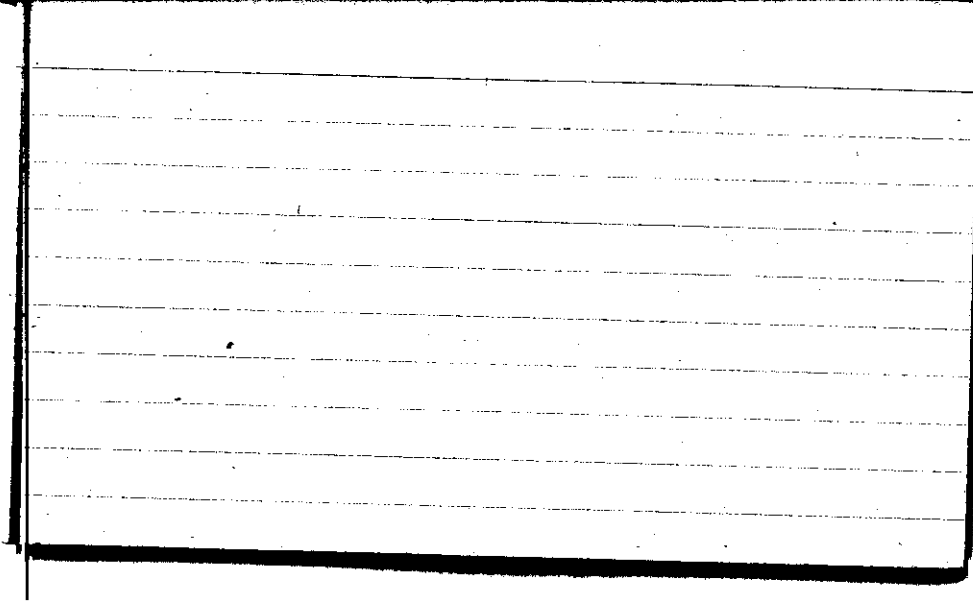


STATE COLLEGE, Pa. Date

OCT 28 1943

Time  
0700

Max. 49	Wind F NW 1	Barom. t 69	General Obs. 0415-0715 ● 0715-0800 ● 0800-1100 ● 1100-1300 ● 1300-1500 ● 1500-1700 ● 1700-1915 ●	≡
Min. 39	Vis. km. 0.5	p 28.50		
Dry 46	Clouds 10 ST Ns	p (red.) 28.40		
Wet 46				
R.H. 100		Morn. ovc Fog 10am	Foren. ovc	
Precip. 0.2 mm/0.01 in.		Noon ovc	Aftern. ovc	
Snowfall/-Depth CLT in/ in.		Eve. ovc	Night ovc	





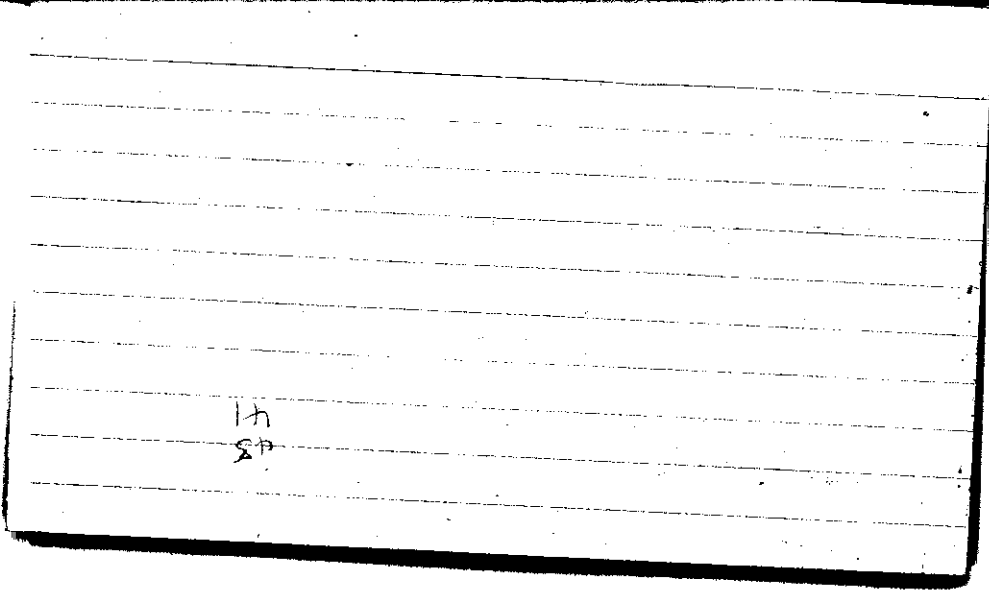
STATE COLLEGE, Pa. Date

OCT 29 1943

Time

0700

Max. 48	Wind F SW 4	Barom. t 66	General Obs. ci fl ci fl cc
Min. 42	Vis. km. 12	P 28.60	
Dry 44	Clouds 10	p(red.) 28.50	
Wet 40	Ca, F, St, Sc		
R.H. 71		Morn. cly	Foren. pty cly
Precip. 4.4 mm/0.24 in.		Noon clear	Aftern. fair
Snowfall/-Depth — in/ — in.		Eve. clear	Night clear
CCT			



14  
20

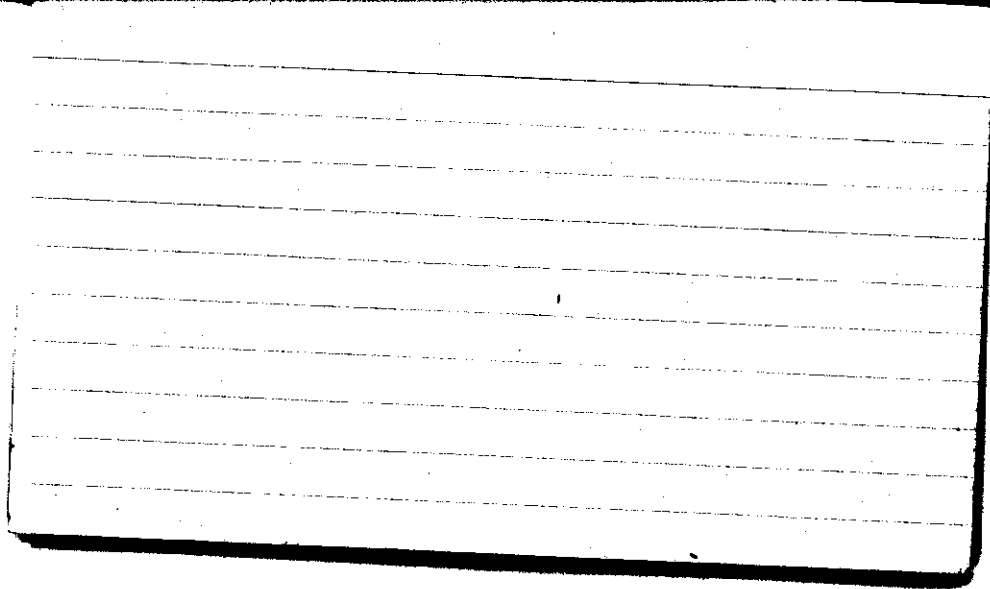
STATE COLLEGE, Pa. Date

OCT 30 1943

Time

0700

Max. 60	Wind F NW 3	Barom. t 68	General Obs. 0635 - 0645 •
Min. 43	Vis. km. 15	P 28.56	0715 - 0910 •
Dry 52	Clouds 10 As, Sc	P(red.) 28.46	0910 - 0950 •
Wet 46			0950 - 1115 •
R.H. 63		Morn. cldy	Foren. pt. cldy - cldy
Precip. - mm/ - in.		Noon pt. cldy	Aftern. Fair
Snowfall/-Depth - in/ - in.		Eve. clear	Night clear



STATE COLLEGE, Pa. Date

OCT 31 1943

Time

0700

Max. 58	Wind F SW 2	Barom. t 68	General Obs.	
Min. 31	Vis. km. 25	p 28.58	ci pecun ci pe	
Dry 32	Clouds 2 As, Ac	p (red.) 28.78		
Wet 30				
R.H. 79		Morn. Fair	Foren. fair	
Precip. 3.3 mm/0.12 in.		Noon fair	Aftern. pky dr Ac	
Snowfall/-Depth in/ - in.		Eve. Fair	Night Fair	

