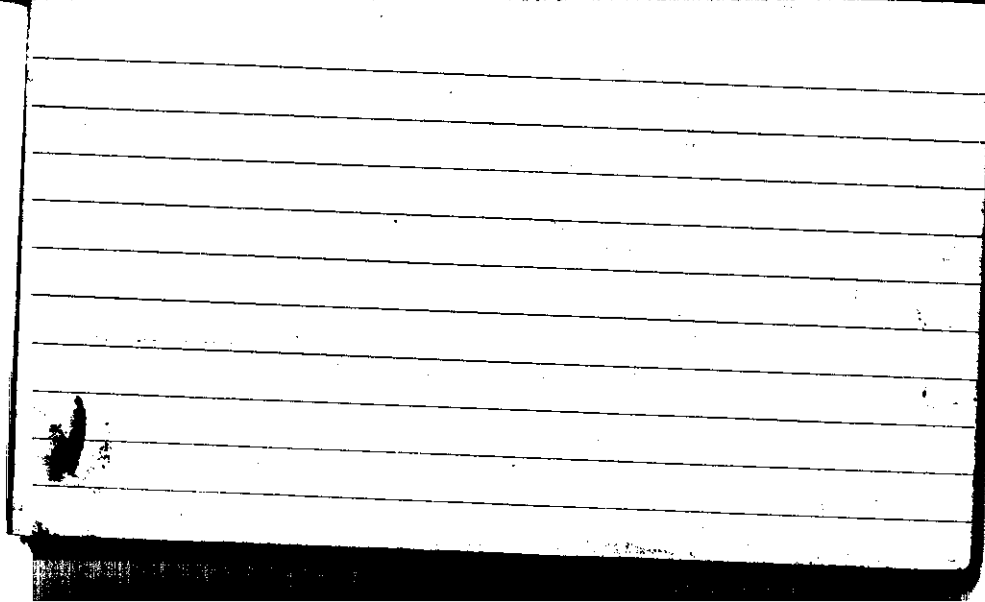


STATE COLLEGE, Pa. Date DEC 1 - 1943

Time 0700

Max. 35	Wind F W 3	Barom. t 65	General Obs. 1545 (o) - 1600 ≡ fad's mts as fcl ci pra ca ci frou ci fcl
Min. 26	Vis. km. 3	P 28.88	
Dry 33	Clouds 10 5, 5t	p (red.) 28.79	
Wet			
R.H. 84		Morn. cldy	Foren. pt cldy
Precip. T mm / T in.		Noon Fair	Aftern. Fair
Snowfall / -Depth T in / in.		Eve. Fair	Night Fair - Pt. Cldy

657



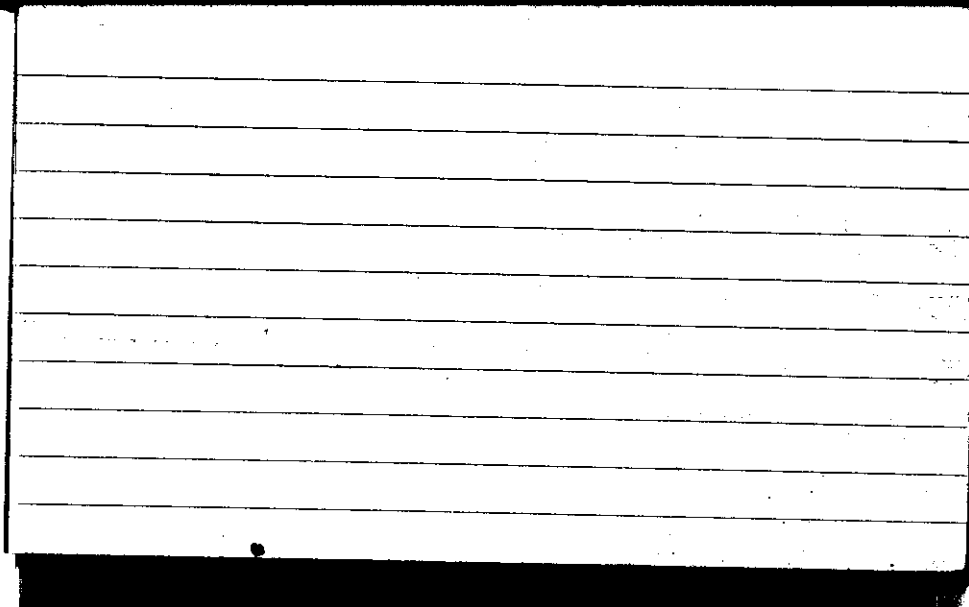
STATE COLLEGE, Pa. Date

DEC 2 - 1943

Time

0700

Max. 45	Wind F SW 3	Barom. t 67	General Obs. 0930 0° - 0940 00	
Min. 31	Vis. km. 8	p 28.77		
Dry 44	Clouds X	p(red.) 28.67		
Wet	Asst As			
R.H. 42		Morn. Cldy	Foren. over	
Precip. mm/ in		Noon Pt. Cldy	Aftern. Fair	
Snowfall/Depth in/ in		Eve. Fair	Night Fair - Pt. Cldy	



STATE COLLEGE, Pa. Date

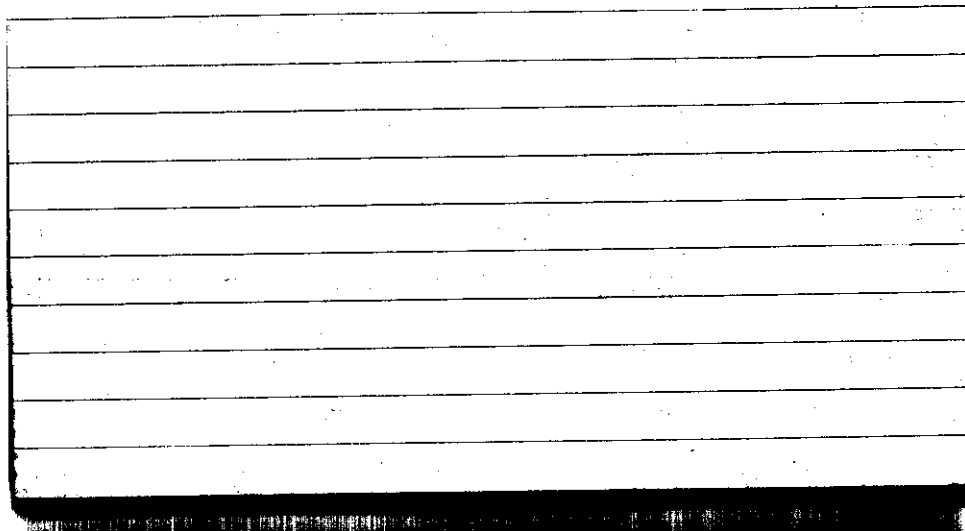
DEC 3 - 1943

Time

0700

Max. 51	Wind F calm	Barom. t 68	General Obs. = turb ms 00	
Min. 42	Vis. km. 2	p 28.92	0650 - 0655°	
Dry 45	Clouds 10	p (red.) 28.82	0715 - 1330 101°	
Wet	st. NS			
R.H. 60		Morn. ovc rain	Foren. ovc rain	
Precip. T mm / T in.		Noon ovc	Aftern. ovc	
Snowfall / -Depth in / in.		Eve. partly clgy Fair	Night Fair	

ECT



STATE COLLEGE, Pa. Date

DEC - 4 1943

Time

0700

Max. 47	Wind F 51	Barom. t 68	General Obs. <input type="checkbox"/> = <del>_____</del>	
Min. 31	Vis. km. 1	28.98		
Dry 33	Clouds 7 Sc	(red.) 28.88		
Wet 32				
A.H. 90		Morn. <i>cldy</i>	Foren. <i>pt. cldy</i>	
Precip. T mm / T in.		Noon <i>pt. cldy</i>	Aftern. <i>fair</i>	
Snowfall / -Depth in / in.		Eve. <i>fair</i>	Night <i>fair</i>	
667				





STATE COLLEGE, Pa. Date DEC - 5 1943

Time 0700

Max. 52	Wind F SW 1	Barom. t 67	General Obs. ∞ L <sup>o</sup>	ci unc
Min. 33	Vis. km. 12	P 28.96		ci pc
Dry 35	Clouds 5	p (red.) 28.86		ci pr
Wet 34	Sc, Cu, Cg, Fc, As			cc
R.H. 91	<i>ms</i>	Morn. Pt. Clky	Foren. fair	ci flau
Precip. mm/ in.		Moon fair	Aftern. fair	
Snowfall/Depth in/ in.		Eve. fair	Night. fair	

CLT



STATE COLLEGE, Pa. Date DEC - 6 1943

Time  
0700

Max. 46	Wind F SW 1	Barom. 28.68	General Obs. 0930-0935 °	
Min. 33	Vis. km. 12	28.90	1150-2240 °	
Dry 38	Clouds 7 As, Ac	p (red.) 28.80		
Wet 34				
R.H. 67		Morn. pt. cldy	Foren. pt. cldy rain	
Precip. - mm / - in.		Noon cldy rain	Aftern. cldy rain	
Snowfall / -Depth in / in.		Eve. cldy rain	Night cldy rain	

CLT



STATE COLLEGE, Pa. Date

DEC 7 - 1943

Time

0700

Max. 45	Wind F NW 3	Barom. t 68	General Obs. ci from ca ca neb. ci fl.	☉ 2130 - 2215
Min. 30	Vis. km. 15	p 28.79		
Dry 38	Clouds 10	p(red.) 28.69		
Wet 34	sc			
R.H. 67		Morn. cldy over	Foren. over to cldy	
Precip. 0.8 mm / 0.03 in.		Noon cldy - P + cldy	Aftern. Pt. cldy	
Snowfall / -Depth - in / - in		Eve. Fair	Night Fair	

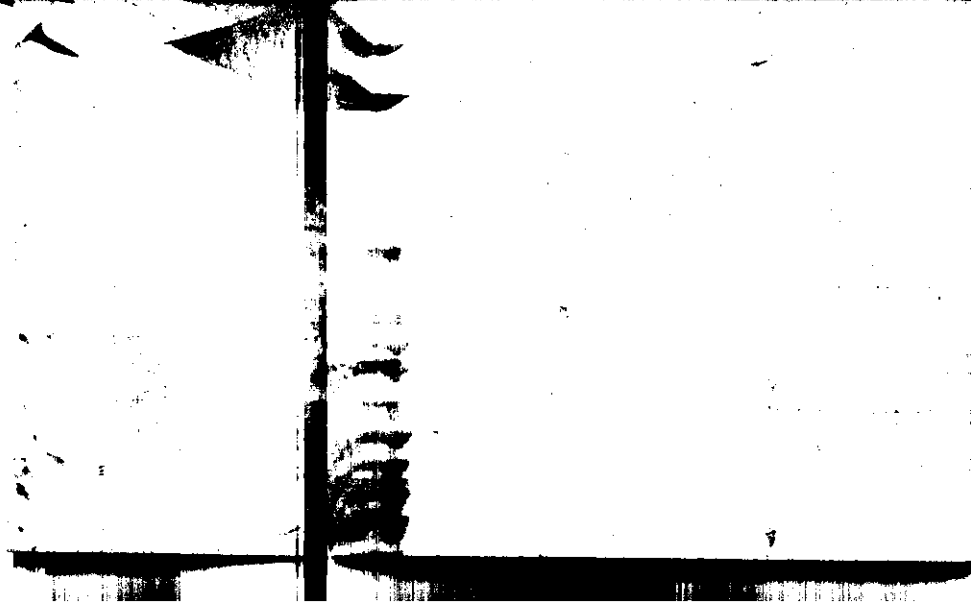


STATE COLLEGE, Pa. Date DEC 8 - 1943

Time 0700

Max. 38	Wind F calm	Barom. t 67	General Obs 0648-1230   9   °	≡ 2200
Min. 28	Vis. km. 5	p 28.80	1630 - 2345   9   °	
Dry 31	Clouds 10	p (red.) 28.70		
Wet 30	55 Ns			
R.H. 91		Morn. cldy ove	Foren. ove cldy	
Precip. T mm / T in.		Noon cldy ove	Aftern. cldy ove	
Snowfall / -Depth - in / - in.		Eve. cldy ove	Night ove cldy fog	

247





STATE COLLEGE, Pa. Date

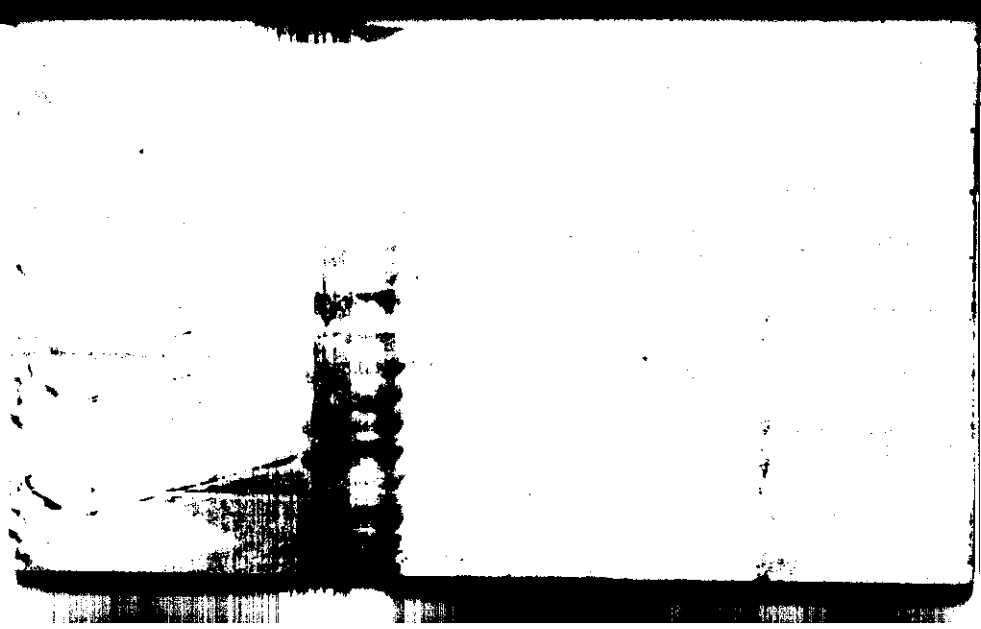
DEC 9 - 1943

Time

0700

Max. 49	Wind F W 4	Barom. ± 68	General Obs. 2200 - 2215 as from	
Min. 31	Vis. km. 12	p 28.88		
Dry 44	Clouds 6 Cs, As, As	p (red.) 28.78		
Wet 40				
R.H. 71		Morn. <del>cl</del> cldy	Foren. cldy	
Precip. T mm / T in.		Noon Pt. cldy	Aftern. Pt. cldy - cldy	
Snowfall / -Depth in / in.		Eve. cldy	Night cldy - Pt. cldy	

567



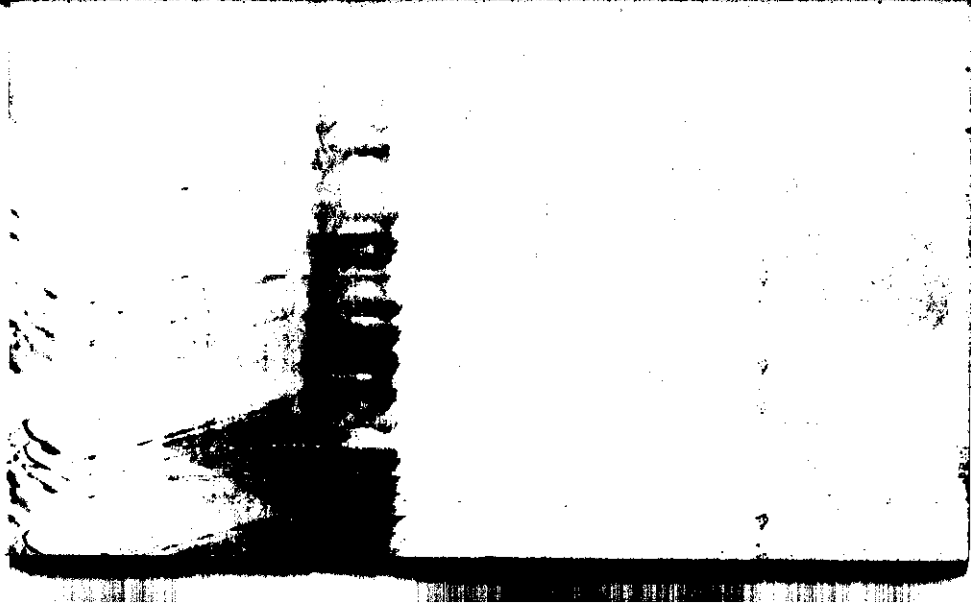
STATE COLLEGE, Pa. Date

DEC 10 1943

Time

0700

Max. 50	Wind F W 3	Barom. t 67	General Obs.	
Min. 34	Vis. km. 12	28.88	2020-2400+ * <sup>o</sup> ↗	
Dry 34	Clouds 5 As, As, Sc	p(red.) 28.78		
Wet 31	Cu			
R.H. 72		Morn. Pt. cldy	Foren. cldy	
Precip. - mm/ - in		Noon cldy	Aftern. cldy	
Snowfall/-Depth in/ in		Eve. cldy	Night pty cldy	
ECT				



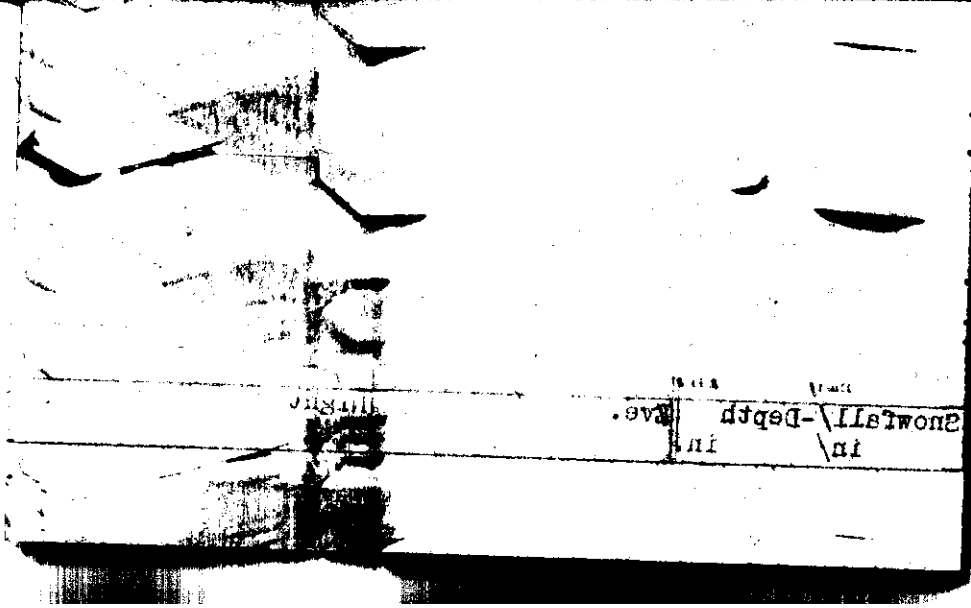
STATE COLLEGE, Pa. Date

DEC 11 1943

Time

0700

Max. 37	Wind F N 4	Barom. 28.62	General Obs. -0000-0130 $\frac{5}{8}$ 0330-0545 $\frac{5}{8}$	
Min. 13	Vis. km. 30	28.74		
Dry 14	Clouds 3	p(red.) 28.65		
Wet	ca. ft			
R.H. 52		Morn. partly cldy	Foren. pty cldy	
Precip. 0.7 mm / 0.03 in.		Noon pt. cldy	Aftern. pt. cldy	
Snowfall/-Depth 0.4 in / 0.4 in.		Eve. pt cldy	Night pt. cldy	



SHOWTALI-Depth  
in

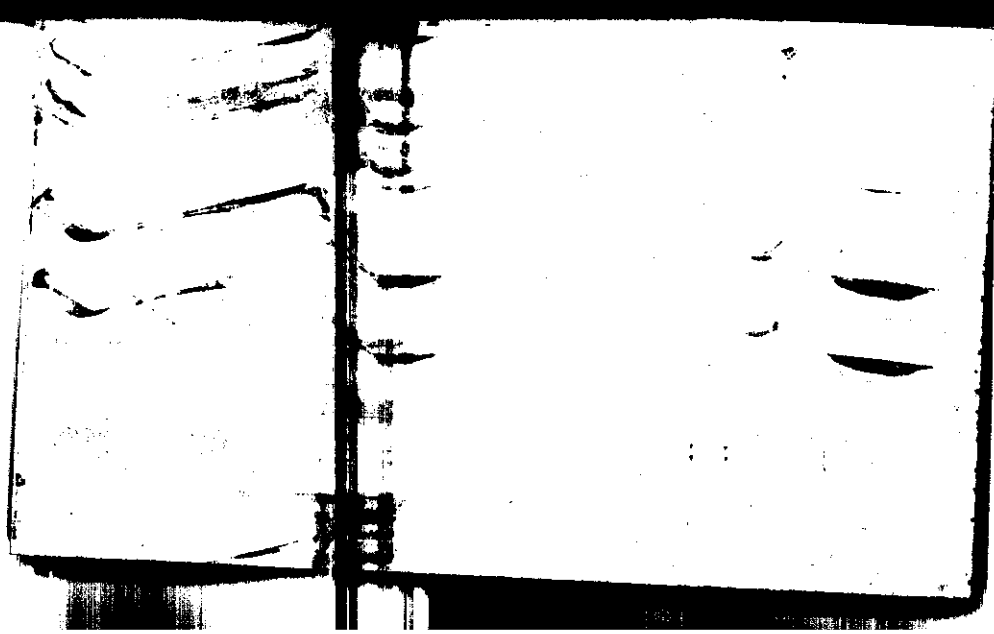
in

STATE COLLEGE, Pa. Date

DEC 12 1943

Time  
0700

Max. 28	Wind F SW 4	Barom. t 62	General Obs. 1945-2000 151° 2130-2400 *° 47
Min. 12	Vis. km. 30	P 28.35	
Dry 28	Clouds 9	p (red.) 28.26	
Wet 24	13, A.		
R.H. 45		Morn. cldy	Foren. cldy - Pt. cldy
Precip. - mm / - in.		Noon Pt. cldy	Aftern. cldy
Snowfall / - depth in.		Eve. cldy	Night cldy





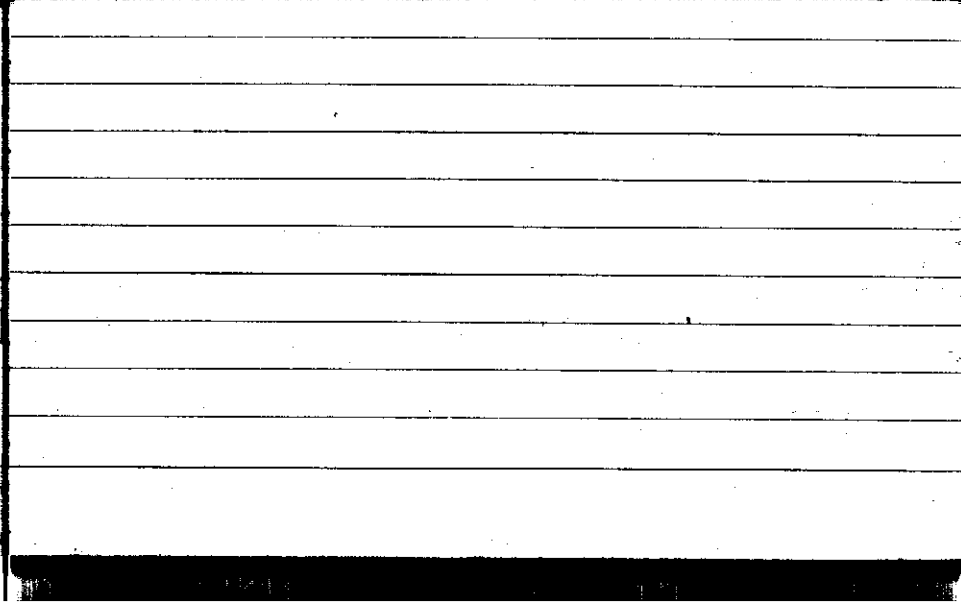
STATE COLLEGE, Pa. Date

DEC 13 1943

Time

0700

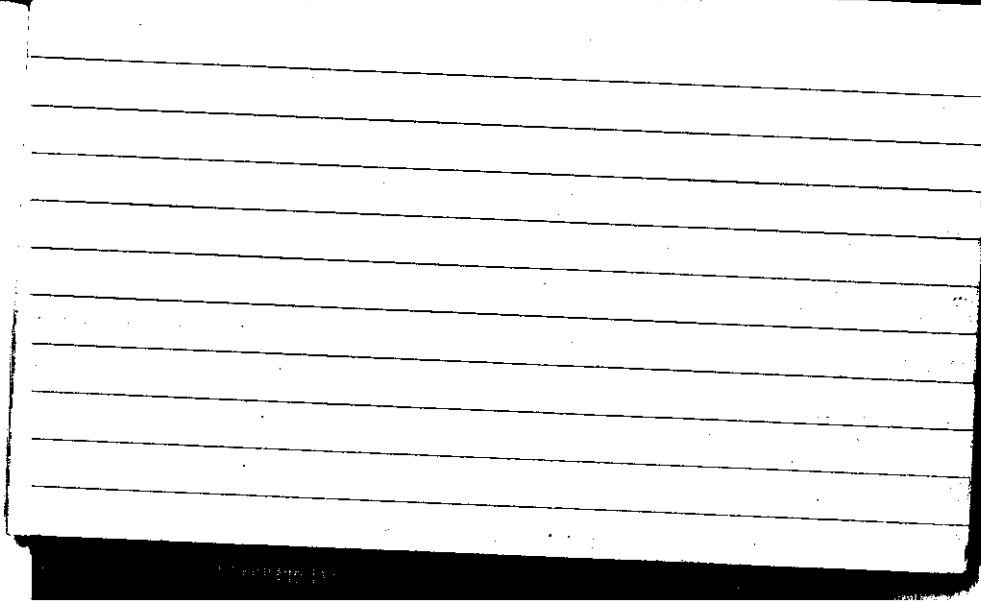
Max. 35	Wind F W 5	Barom. t 64	General Obs.	
Min. 15	Vis. km. 4	p 28.60	0000 - 0045 *° ↗ 0230 - 0740 *° ↘	
Dry 16	Clouds 10	p(red.) 28.51		
Wet 14	Rb, Cd			
R.H. 66		Morn. ovc snow	Foren. cldy	
Precip. T mm / T in.		Noon cly	Aftern pty cly	
Snowfall / -Depth 0.2 in / T in.		Eve. Fair	Night cly	



STATE COLLEGE, Pa. Date DEC 14 1943

Time  
0700

Max. 18	Wind F W 2	Barom. t. 67	General Obs. 00 1730-1745 <del>5</del>	no neb no irid.
Min. 13	Vis. km. 6	p 28.80		
Dry 17	Clouds 4	p(red.) 28.70		
Wet	Cl, Cg, Ac Cu			
R.H. 75		Morn. Pt. Cldy	Foren. cldy	
Precip. T mm/ T in.		Noon Pt. Cldy	Aftern. Pt. Cldy	
Snowfall/-Depth T in/ T in.		Eve. Pt. Cldy	Night Fair	

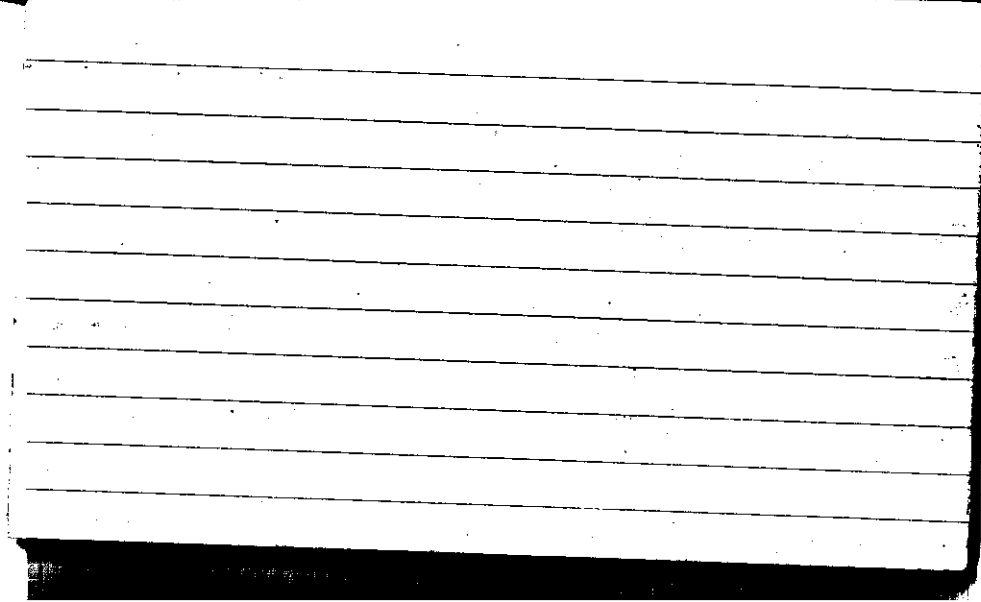


STATE COLLEGE, Pa. Date DEC 15 1943

Time  
0700


Max. 22	Wind F NW 2	Barom. t 66	General Obs. L'	Ci floc Ci Den
Min. 3	Vis. km. 16	P 29.13		
Dry 3	Clouds 1	p(red.) 29.03		
Wet 2 1/2	Fc			
R.H. 83		Morn. Fair	Foren. Clear	
Precip. T mm / T in.		Noon Clear	Aftern. Clear	
Snowfall/-Depth T in / T in.		Eve. Clear	Night Clear	

667

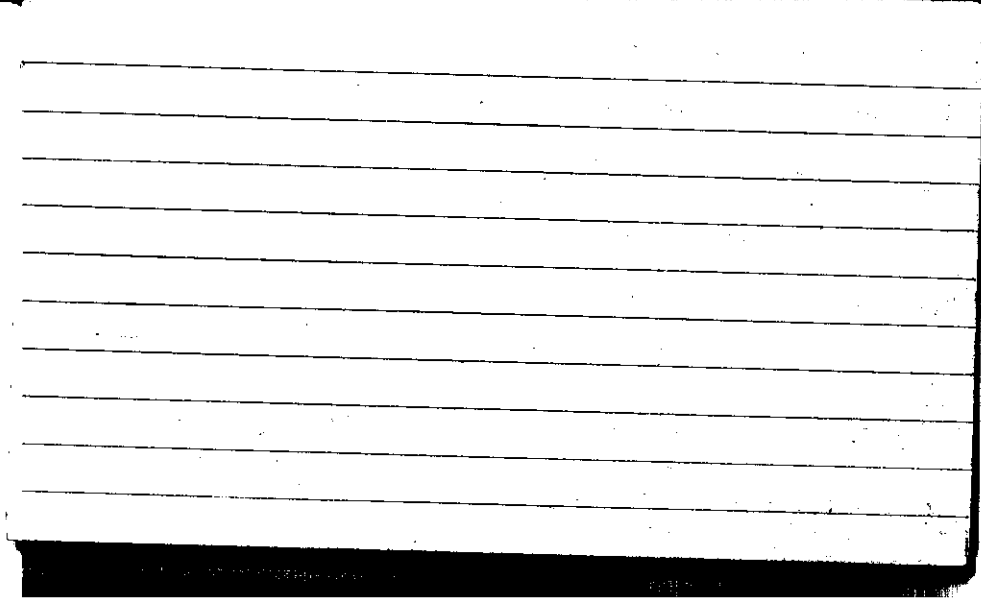


STATE COLLEGE, Pa. Date DEC 16 1943

Time 0700

Max. 19	Wind F W 4	Barom. t 66	General Obs. L'	cc w flow
Min. 2	Vis. km. 12	P 29.17	* 0730-1245 16/10°	0715 ↓ - 0800
Dry 11	Clouds 9	P(red.) 29.07	1700-1715 15/10°	
Wet 10.2	As, Sc Acc			
R.H. 83		Morn. cldy A	Foren. pt. cldy	
Precip. mm/ in		Noon pt. cldy	Aftern. pt. cldy	
Snowfall/Depth in/ T in		Eve. pt. cldy	Night pt. cldy - clear	

CLT



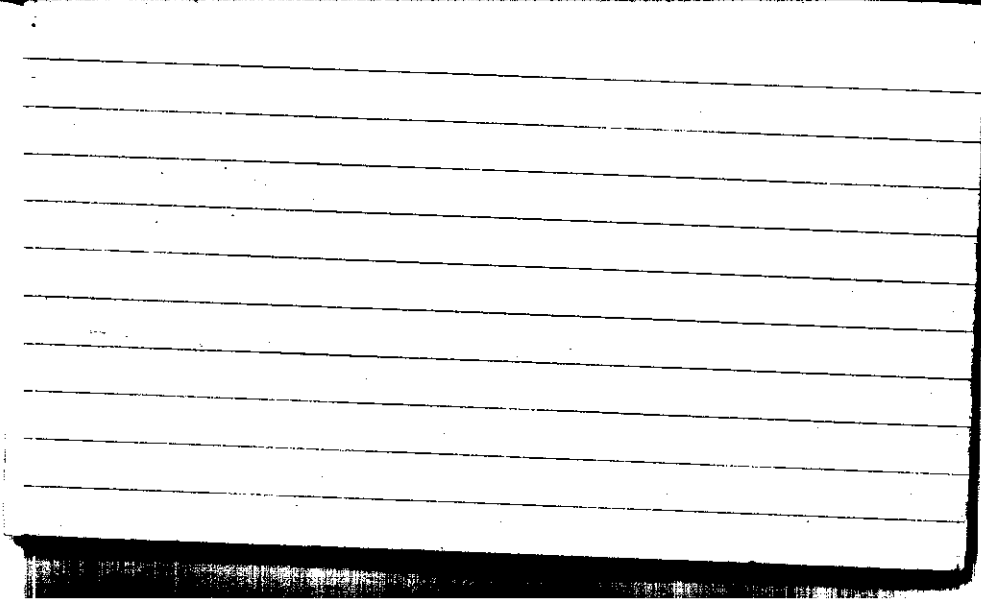


STATE COLLEGE, Pa. Date

DEC 17 1943

Time  
0700

Max. 23	Wind F W 4	Barom. t 67	General Obs. 0145-0200 E 0430-0445 E	as den a
Min. 11	Vis. km. 4	p 29.15		
Dry 18	Clouds 10	p (red.) 29.08		
Wet 16.2	As, St			
R.H. 72		Morn. cldy	Foren. pt. cldy	
Precip. T mm / T in.		Noon Fair	Aftern. Fair	
Snowfall/-Depth T in / T in.		Eve. Clear	Night Fair	

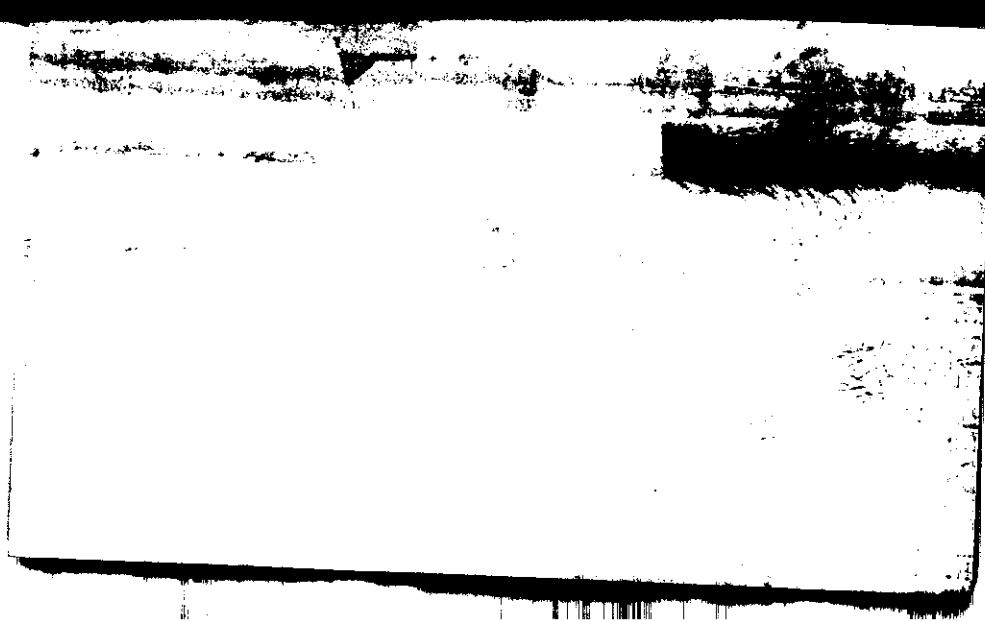


STATE COLLEGE, Pa. Date

DEC 18 1943

Time  
0700

Max. 28	Wind S 3	Barom. 68	General Obs. 1415 ☉ - 1450. 1520 ☉ - 1550	Time 0700 cc cc: p cc: den neb As lent
Min. 18	Vis. km. 8	P 28.96		
Dry 24	Clouds 6	P (red.) 28.86		
Wet	C, A3, A<			
R.H.		Morn. <i>cloudy</i>	Foren. <i>cloudy</i>	
Precip. — mm / — in.		Noon <i>cloudy</i>	Aftern. <i>cloudy</i>	
Snowfall / -Depth — in / T in		Eve.	Night	

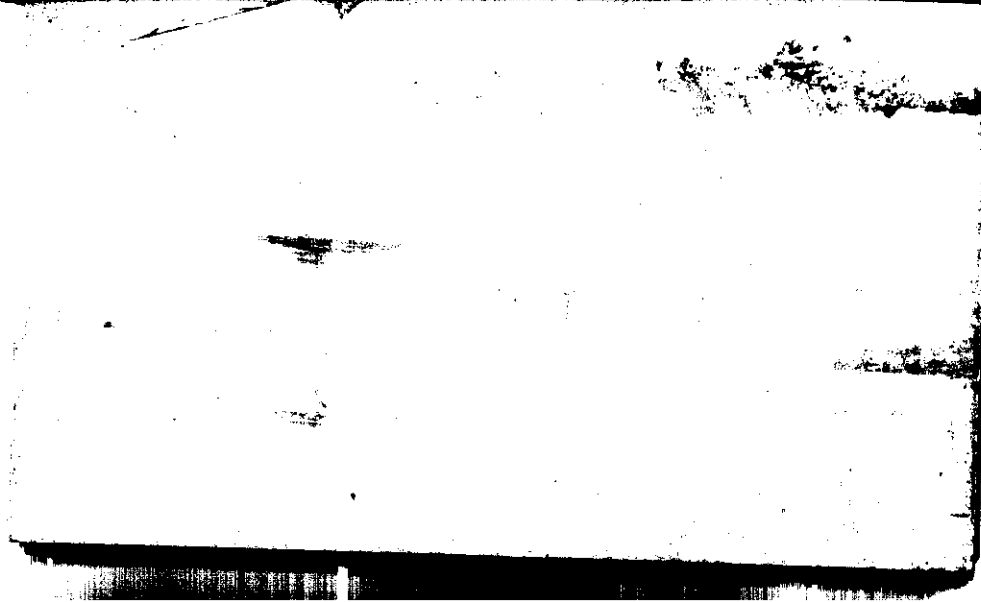


STATE COLLEGE, Pa. Date

DEC 19 1943

Time  
0700

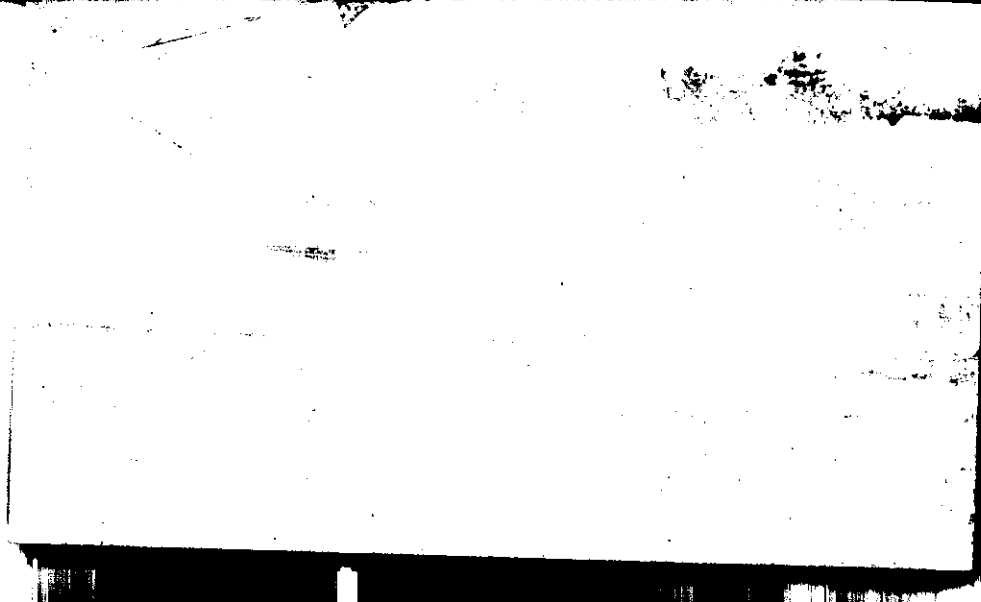
Max. 35	Wind P WSW 3	Barom. t 66	General Obs.
Min. 21	Vis. km. 8	28.84	
Dry 21	Clouds 3	p(red.) 28.74	
Wet 18.5	Cs, As		
R.H. 64		Morn. pt. cldy	Foren. pt. cldy - Fair
Precip. mm/ in.		noon Fair	Aftern. Fair
Snowfall/-depth in/ T in.		eve. Fair	Night ptly cldy



STATE COLLEGE, Pa. Date DEC 20 1943

Time 0700

Max. 41	Wind <sup>7</sup> NW 8	Barom. 28.68	General Obs. 0330-0640 <sup>1/4</sup> ° 0830-1230 <sup>1/4</sup> °	
Min. 19	Vis. km. 50	28.66		
Dry 28	Clouds 5 Cu, Cy, cb	p(red.) 28.56		
Wet 25				
R.H. 66		Morn. pt. cldy	Foren. pt. cldy	
Precip. T mm/ T in		Noon pt. cldy	Aftern. pt. cldy	
Snowfall/-Depth T in/ T in		Eve. clear	Night clear	
CLT				



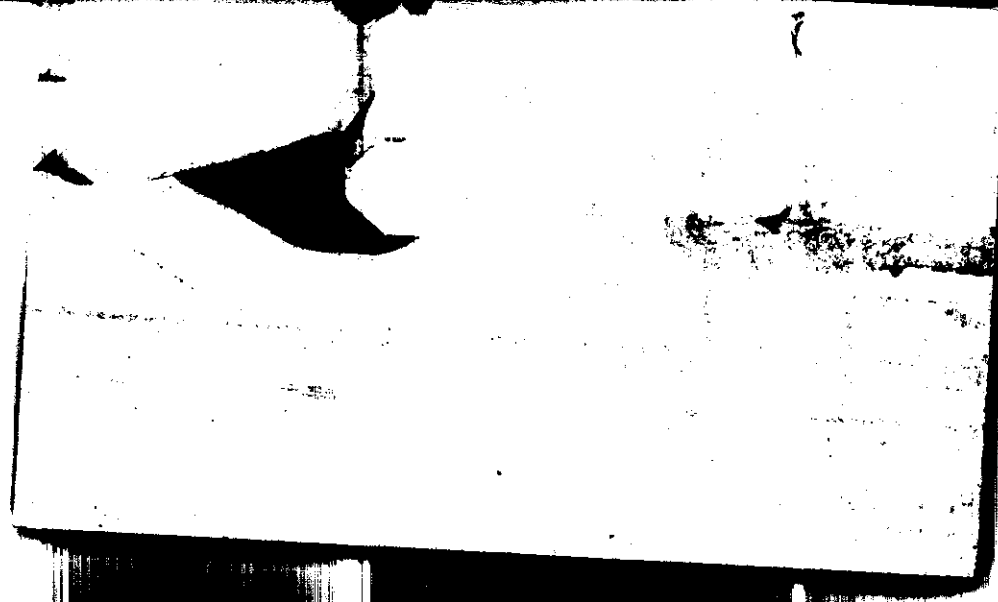


STATE COLLEGE, Pa. Date

DEC 21 1943

Time  
0700

Max. 30	Wind F SW 4	Barom. h 70	General Obs.  0 0935-1015 cs neb cs fume ci fume cc
Min. 25	Vis. km. 16	P 28.6P	
Dry 28	Clouds 4 Ci, Cs, As	p (red.) 28.57	
Wet 26	Ac		
R.H. 77			
Precip. T mm/ T in.		Morn. pt. cldy	Foren. Fair
Snowfall/Depth T in/ T in.		Noon Fair	Aftern. Fair
		Eve. Clear	Night Fair

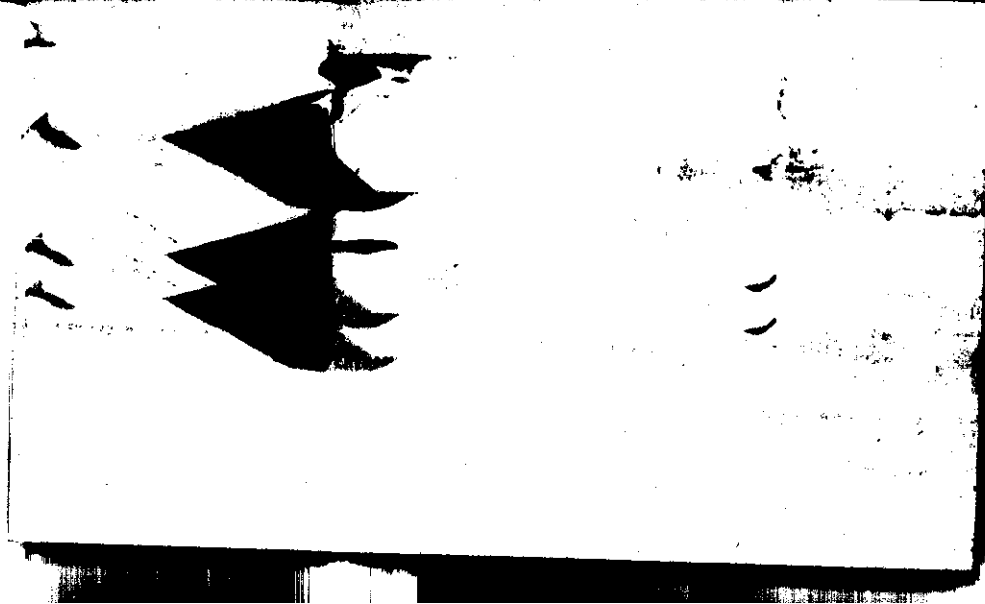


STATE COLLEGE, Pa. Date

DEC 22 1943

Time  
0700

Max. 47	Wind P WSW 5	Barom. t 71	General Obs. 0720 -0815 $\theta^{\circ}$	ci 2am cc ci from
Min. 24	Vis. km. 15	p 28.65	1550 $\rightarrow$ 1740 $\left[ \frac{1}{2} \right]^{\circ}$	
Dry 24	Clouds 6 Sc cum	p (red.) 28.54		
Wet 21.4				
M.H. 69			Morn. cldy snow	Morn. cldy
Precip. — mm/ — in.			Morn. ply cldy	Aftern. cldy snow fl.
Snowfall/ -Depth — in/ T in			Even. ply cldy	Night clear
667				



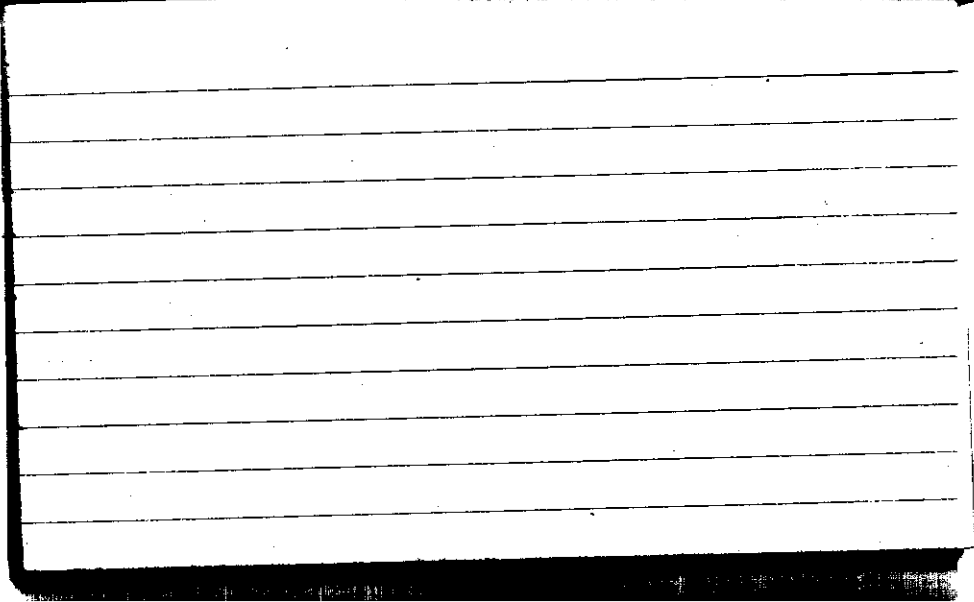
STATE COLLEGE, Pa. Date

DEC 23 1943

Time

0700

Max. 25	Wind F WNW 3	Barom. t 69	General Obs. $L^{\circ} \infty$ 0120-0130 * $^{\circ}$ 0315-0450 * $^{\circ}$ } probably condensation from 0730-0800 * $^{\circ}$ } clear sky as 1020-1650 * $^{\circ}$ } later morning	
Min. 7	Vis. km. 10	p 29.08		
Dry 8	Clouds 2	p(red.) 28.98		
Wet	ci dense Ac cu			
R.H. 88		Morn. <i>pty dry morn from blue sky</i>	Foren. <i>dry morn.</i>	
Precip. T mm / T in		Noon <i>cloudy</i>	Aftern. <i>dry (cb)</i>	
Snowfall/-Depth T in / T in		Eve. <i>clearing</i>	Night <i>clear</i>	

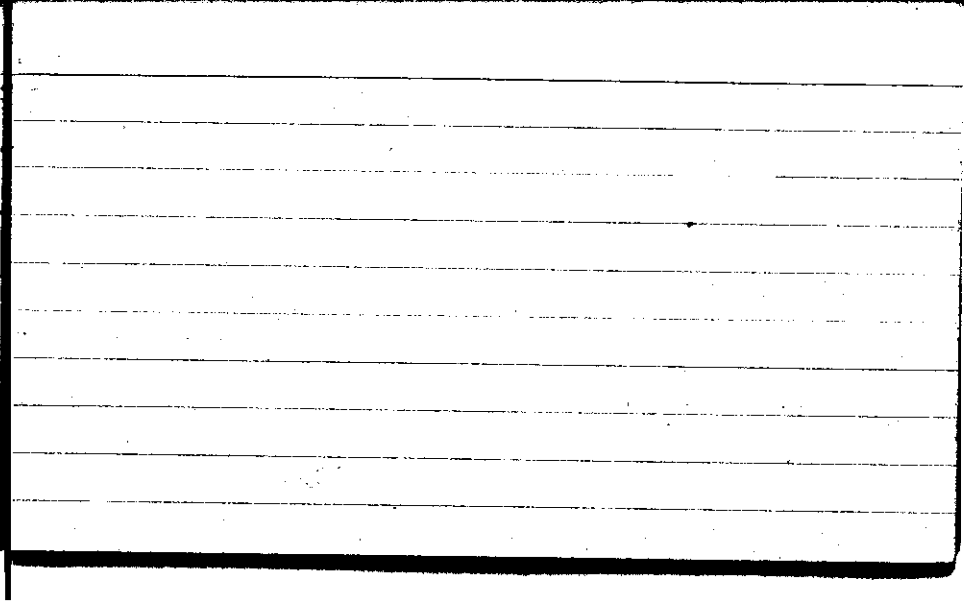


STATE COLLEGE, Pa. Date

DEC 24 1943

Time  
0700

Max. 18	Wind F WNW 3	Barom. t 62	General Obs. L' 1300 @ as from - 1500 4 miles	
Min. 6	Vis. km. 8	p 29.38		
Dry 7	Clouds < 1	p(red.) 29.29		
Wet	Ac leat			
R.H. 91		Morn. clear to fair	Foren. pty cl	
Precip. T mm/ T in.		Noon pty cl	Aftern. fair as ci	
Snowfall/-Depth 0.1 in/ T in.		Eve. fair	Night fair	



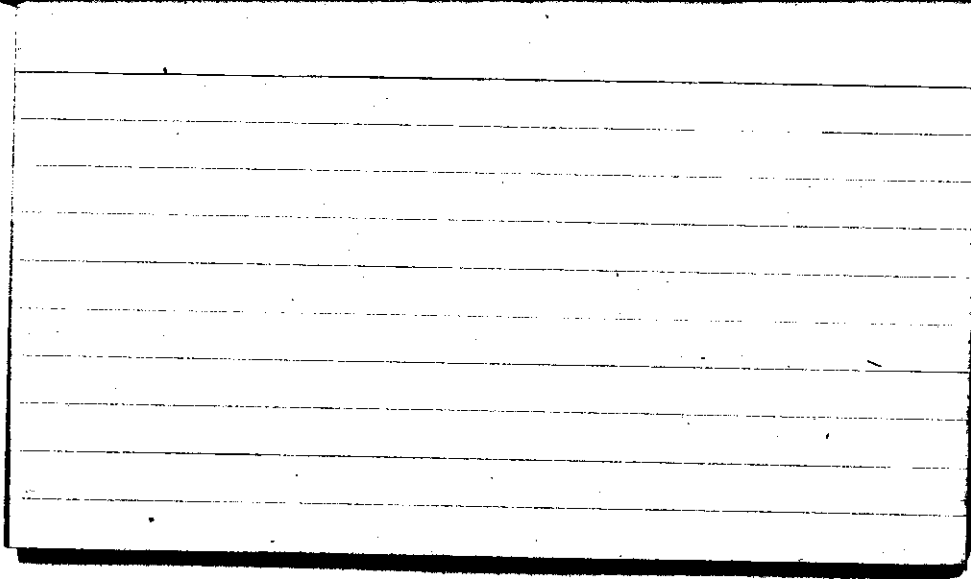


STATE COLLEGE, Pa. Date

DEC 25 1943

Time  
0700

Max. 24	Wind F W 2	Barom. t 62	General Obs. $\odot$ ① 0300-1500 inter- s from without a
Min. 7	Vis. km. 8	p 29.17	
Dry 17	Clouds 7	p(red.) 29.08	
Wet 14	ac ci cu cu Ac		
R.H. 52		Morn. fair to pky cldy	Foren. overcast high
Precip. — mm/— in		Noon over As cs	Aftern. over As G
Snowfall/-Depth — in/— in		Eve. over As G	Night over As G



STATE COLLEGE, Pa. Date

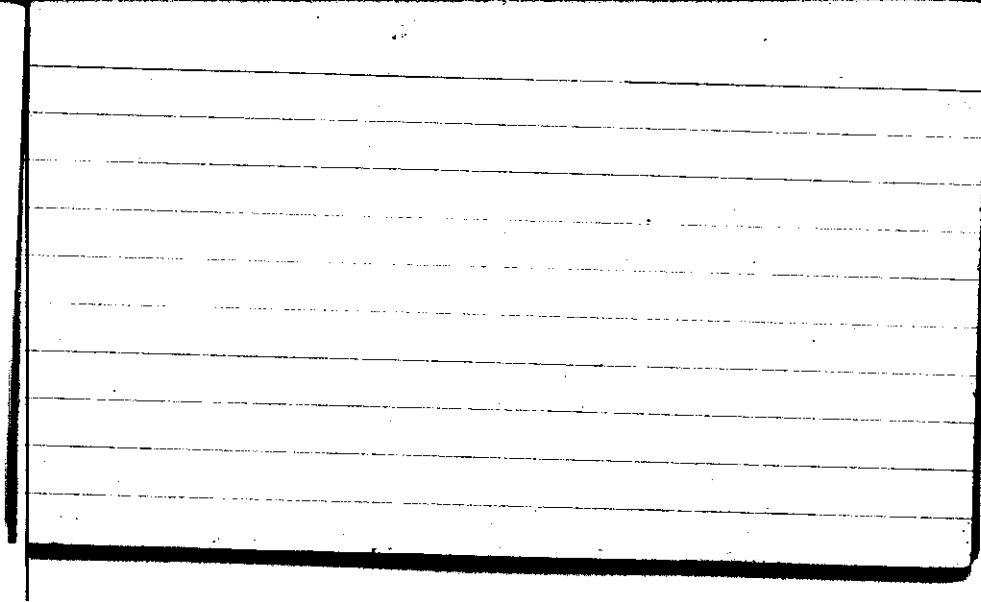
DEC 26 1943

Time

0700

Max. 35	Wind F NE 2	Barom. t 63	General Obs. ∞ 0830 002
Min. 14	Vis. km. 8	P 29.05	9° 0646 - P-10800 -
Dry 22	Clouds 10	p(red.) 29.96	A' 1150 -
Wet	AS		91920-2400+ Sp.R. 1800
R.H. 75		Morn. <i>ov drizzle</i>	Foren. <i>severe glass rain falling ov</i>
Precip. T mm/ T in.		Noon <i>ov freezing mi. glass</i>	Aftern. <i>ov sleet rain phase</i>
Snowfall/-Depth — in/ T in.		Eve. <i>ov sleet rain</i>	Night <i>ov</i>

HN

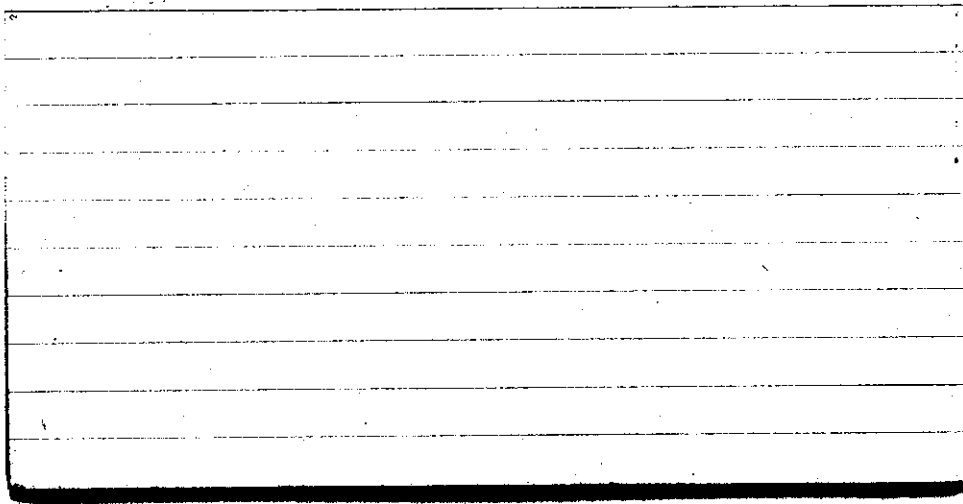


STATE COLLEGE, Pa. Date

DEC 27 1943

Time  
0700

Max. 36	Wind F calm	Barom. t 68	General Obs. ≡ ° ~ ill 21.0	
Min. 21	Vis. km. F	p 28.83	° 0000 - 0130	
Dry 36	Clouds 10	p(red.) 28.73	° 0620 - 1445	
Wet 36	N <sub>2</sub>		° 1330 - 1445	
R.H. 100		Morn. ovc	1st. rain	Foren. ovc
Precip. 20.6 mm / 0.81 in.		Noon cldy		Aftern. cldy
Snowfall/-Depth - in / - in.		Eve. ovc		Night ovc
CLT				



STATE COLLEGE, Pa. Date

DEC 28 1943

Time  
0700

Max. 40	Wind F NW 3	Barom. t 73	General Obs. 0000-0330 ☽	as plane
Min. 33	Vis. km. 15	p 28.90	0330-0400 ☽	cc 0840 ☽
Dry 33	Clouds 9	p(red.) 28.78	0400-0615 ☽	1046 ☽
Wet 29	3 <sup>rd</sup> Sc			1050 ☽
R.H. 69		Morn. cldy cldy	Foren. cldy	1210 ☽ 1300
Precip. T mm / T in.		Noon cldy	Aftern. cldy over	
Snowfall/-Depth — in / — in.		Eve. cldy	Night cldy - Pt cldy	
CLT				





STATE COLLEGE, Pa. Date

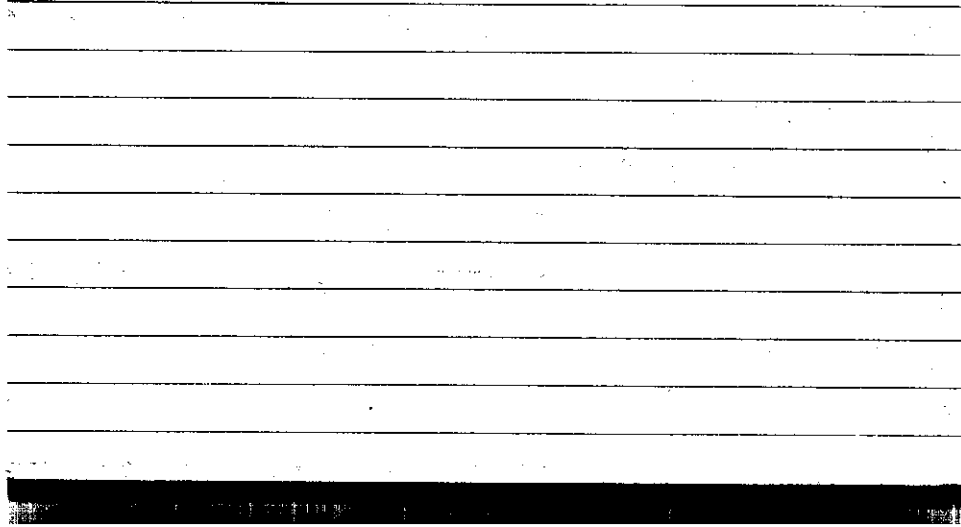
DEC 29 1943

Time

0700

Max. 34	Wind F NE 1	Barom. t 70	General Obs. L <sup>o</sup>
Min. 10	Vis. km. 25	p 28.93	
Dry 11	Clouds 1	p(red.) 28.82	
Wet 9.5	cs		
R.H. 70		Morn. fair	Foren. clear
Precip. - mm/ - in.		Noon clear	Aftern. clear-fair
Snowfall/-Depth - in/ - in.		Eve. clear	Night clear

CLT

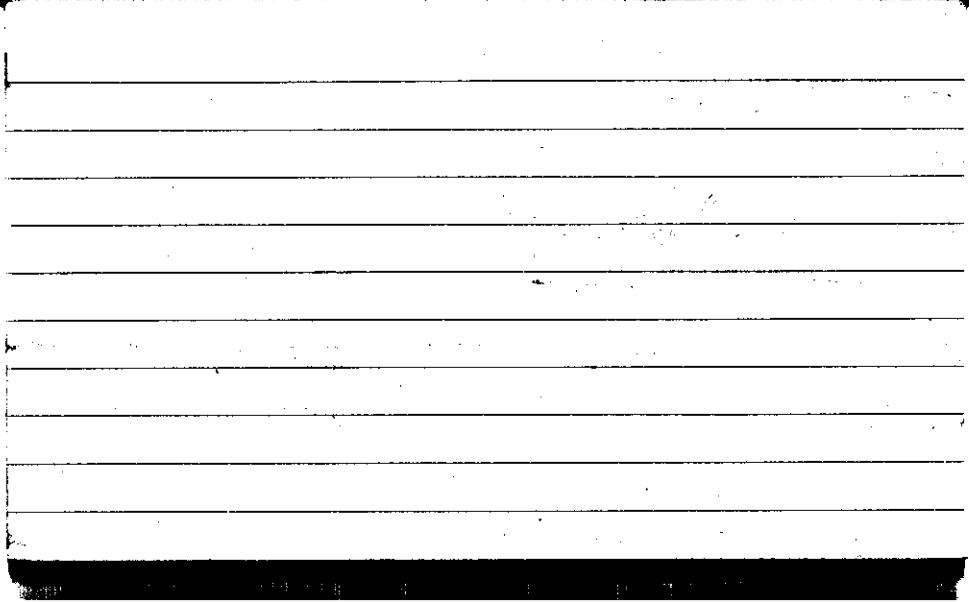


STATE COLLEGE, Pa. Date

DEC 30 1943

Time  
07--

Max. 24	Wind F calm	Barom. t 70	General Obs. L <sup>o</sup> =		Cc ci floc ci fkm Cc mod.
Min. 9	Vis. km. 2	p 28.92			
Dry 14	Clouds clear	p (red.) 28.81			
Wet 13					
R.H. 82		Morn. clear	Foren. clear		
Precip. - mm/ - in.		Noon fair	Aftern. fair		
Snowfall/ -Depth - in/ - in.		Eve. fair, foggy	Night foggy		



STATE COLLEGE, Pa. Date DEC 31 1943

Time  
0700

Max. 32	Wind F NW 3	Barom. t 72	General Obs. =
Min. 11	Vis. km. 3	p 28.89	
Dry 28	Clouds 10 As, St	p(red.) 28.78	
Wet 27			
R.H. 88		Morn. OVC	Foren. OVC
Precip. — mm/ — in.		Noon cldy	Aftern. Pt. cldy — clear
Snowfall/-Depth — in/ — in.		Eve. clear	Night Fair

627

