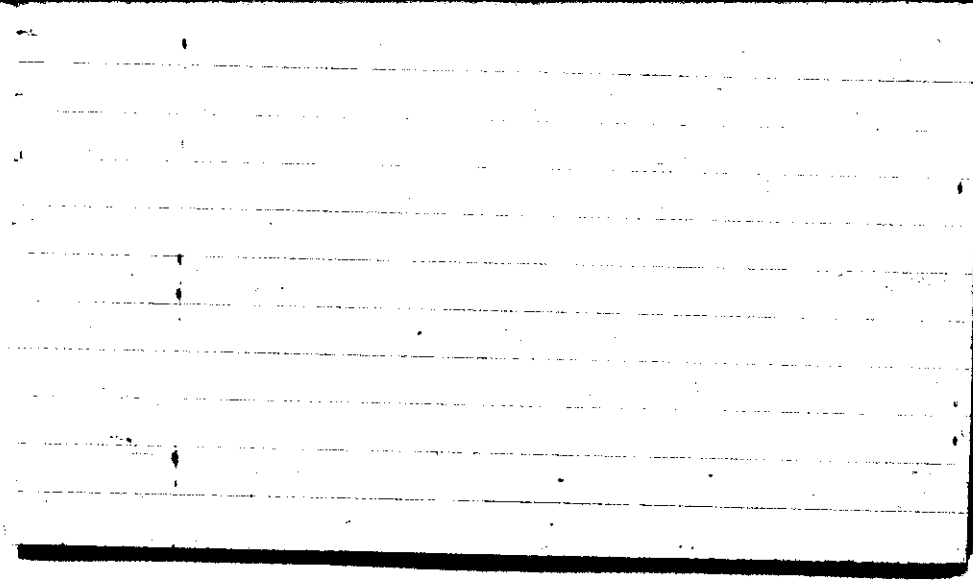


STATE COLLEGE, Pa. Date

SEP 1 1942

Time
0700

Max.	Wind F	Barom.	General Obs.
79	SE 1	t 79	$\alpha^2 \equiv \dots$
Min. 51	Vis. km. 400 m	29.09	
Dry 53	Clouds 0	p(red.) 28.96	
Wet			
R.H. 97		Morn. Foggy	Foren. = Clear
Precip. 1 mm / 1 in.		Noon Fair	Aftern. Fair (<i>ci' d' am' prog</i>)
Snowfall/-Depth 1 in / 1 in.		Eve. clear	Night clear
A.M.			0700



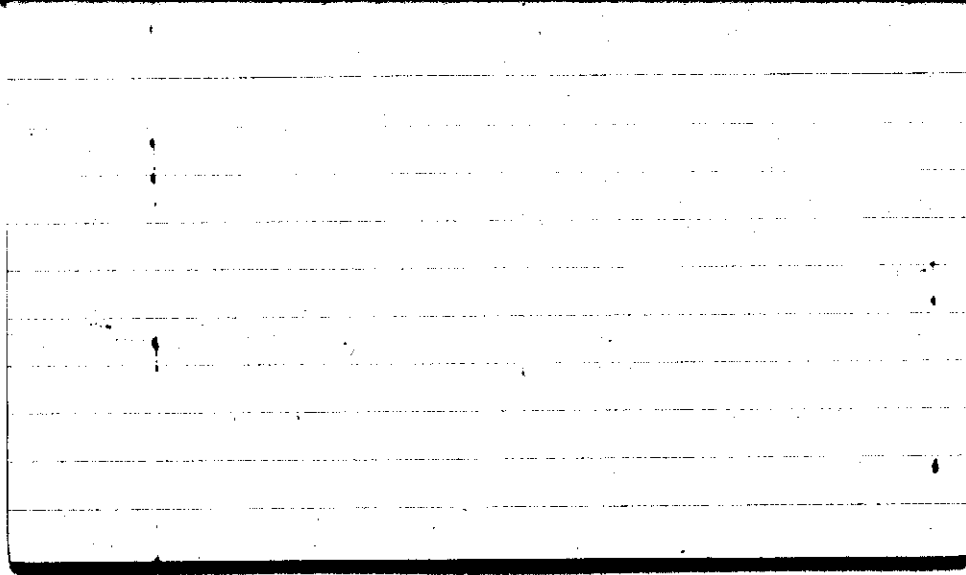
STATE COLLEGE, Pa. Date

SEP 2 1942

Time
0700

Max. 81	Wind S 1	Barom. t 78	General Obs. $\alpha^{\circ} =$	
Min. 53	Vis. km. 10	P 2898		
Dry 61	Clouds 0	p(red.) 28.85		
Wet				
R.H. 85		Morn. clear	Foren. clear	
Precip. / mm / in		Noon clear to pty cly	Aftern. pty cly	
Snowfall/-Depth in / in		Eve. clear	Night cly to clear	

HN 0710

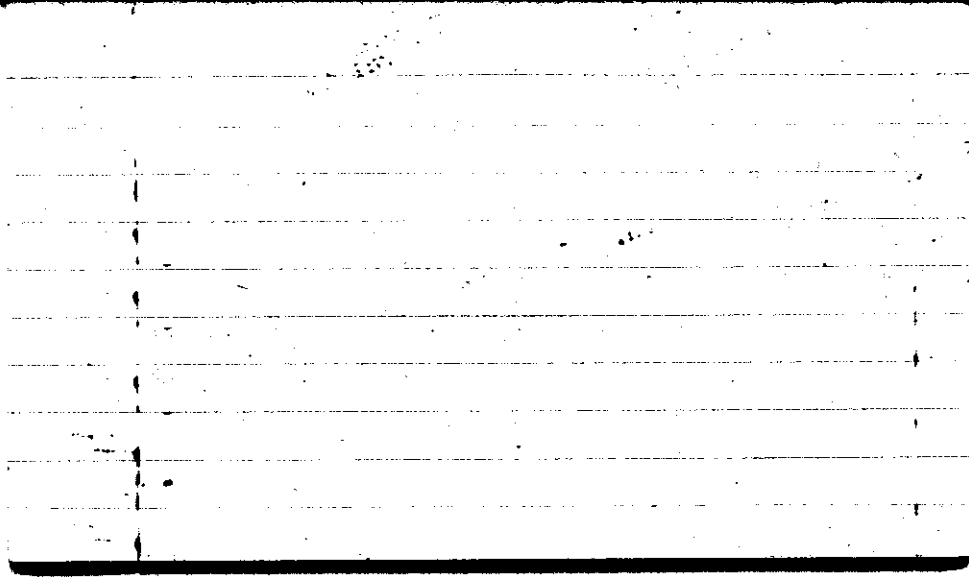


STATE COLLEGE, Pa. Date

SEP - 3 1942

Time
0700

Max. 84	Wind F W 2	Barom. t 80	General Obs. = <i>at</i>	
Min. 61	Vis. km. 5	p 28.82	1815 R _g - 1855	
Dry 68	Clouds 2	p(red.) 28.69	1905-1910 <i>g</i>	
Wet	as den		1945-2105 <i>g</i>	
			2150-2155 <i>g</i>	
R.H. 90		Morn. fair	Foren. fair	
Precip. mm / in.		Noon <i>pty cldy to</i>	Aftern. <i>cldy</i> <i>in cldy</i>	
Snowfall/-Depth in / in.		Eve. <i>cldy to eve.</i> <i>then 2 am to morn</i>	Night <i>ove. rain</i> <i>shown</i>	
<i>th.</i>		0711		

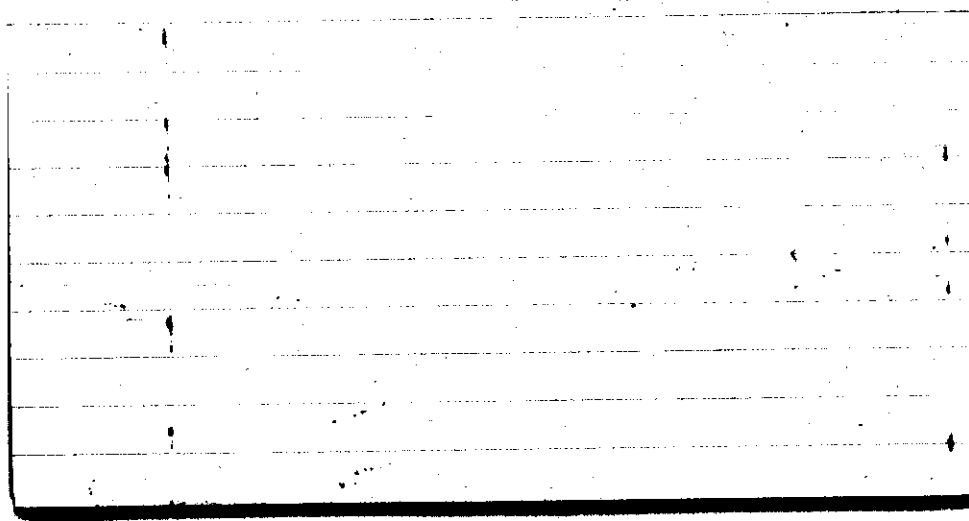


STATE COLLEGE, Pa. Date

SEP - 4 1942

Time
0700

Max. 85	Wind F NNE 2	Barom. t 80	General Obs. 9 =	
Min. 61	Vis. km. 1	p 28.84	0650 - 0750	
Dry 61	Clouds 10	p(red.) 28.71	0750 - 0900	
Wet	Ns			
R.H. 98		Morn. ovc. drizzle	Foren. ovc. rain, show	
Precip. 4.3 mm / 0.17 in.		Noon ovc	Aftern. ovc with breaks	
Snowfall / -Depth / in / / in.		Eve. ovc to day clearing	Night clear to fair	
		IN 7.45		



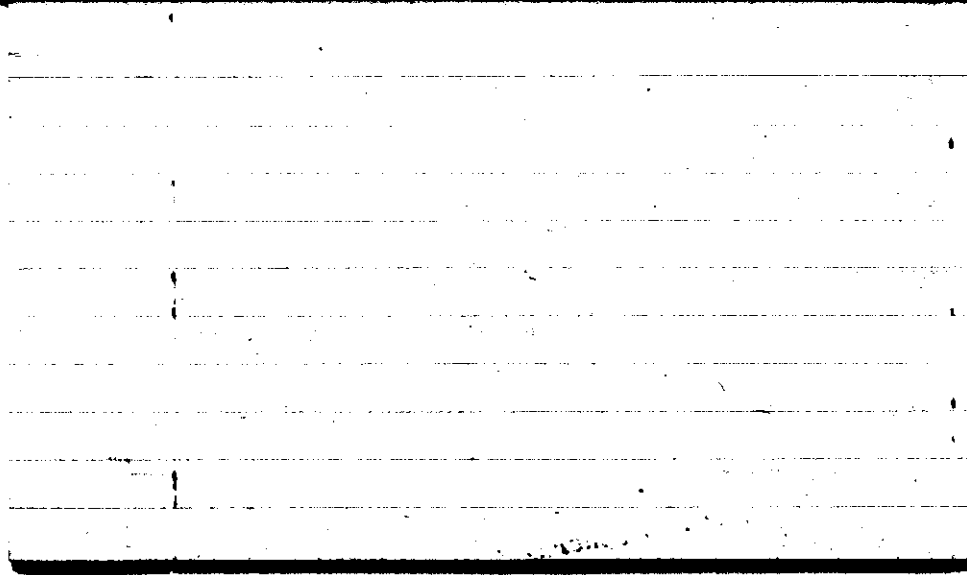
STATE COLLEGE, Pa. Date

SEP - 5 1942

Time

0700

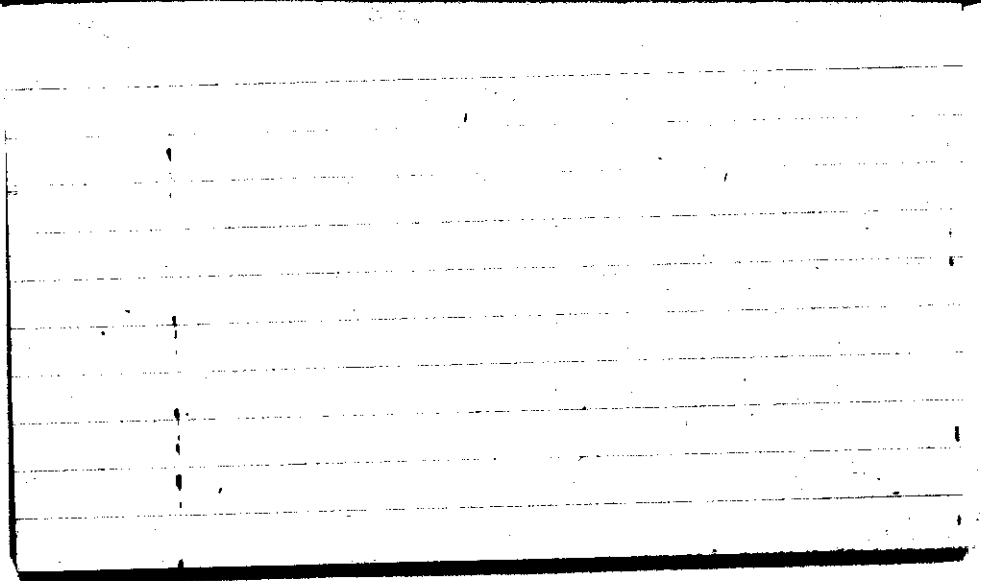
Max. 70	Wind F W 2	Barom. t 77	General Obs. α^2	
Min. 49	Vis. km. 20	p 28.95	0700 -0735	
Dry 53	Clouds 3	p(red.) 28.83		
Wet	ci ci flou ci nert ci den - cc			
R.H. 97		Morn. fair	Foren. fair	
Precip. 0.8 mm / 0.03 in.		Noon pty clry	Aftern. fair	
Snowfall/-Depth - in / - in.		Eve. fair	Night fair	



STATE COLLEGE, Pa. Date SEP - 6 1942

Time 0700

Max. 77	Wind F calm	Barom. t 76	General Obs. $\bar{a}^2 =$		
Min. 50	Vis. km. 10	p 29.12			0720 01 -0800
Dry 55	Clouds 8	p(red.) 29.00			1715 01 -1815
Wet	as seen in file after				
R.H. 96		Morn. fair	Foren. pty cly		
Precip. mm/ in.		Noon pty cly	Aftern. fair, pty cly		
Snowfall/Depth in/ in.		Eve. fair to pty cly	Night cly		
Hk.					

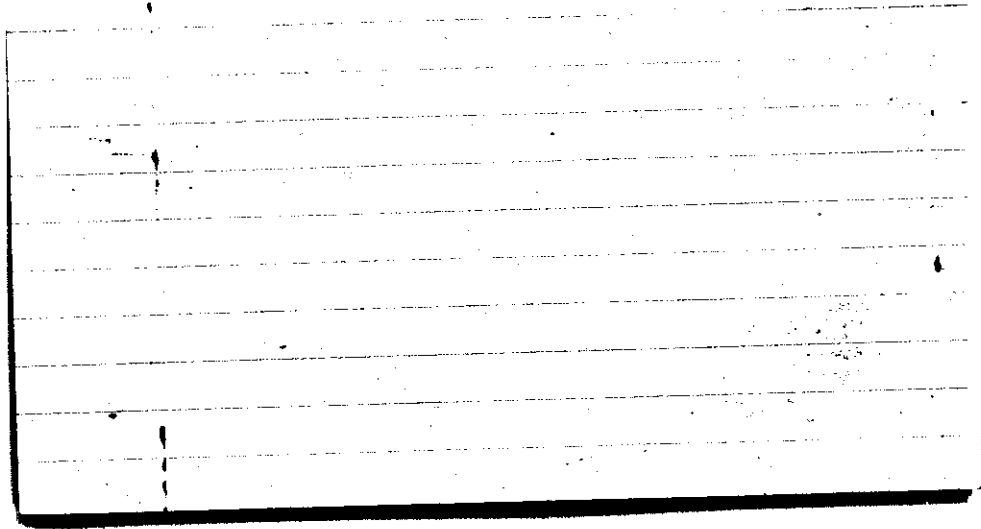


STATE COLLEGE, Pa. Date **SEP -7 1942**

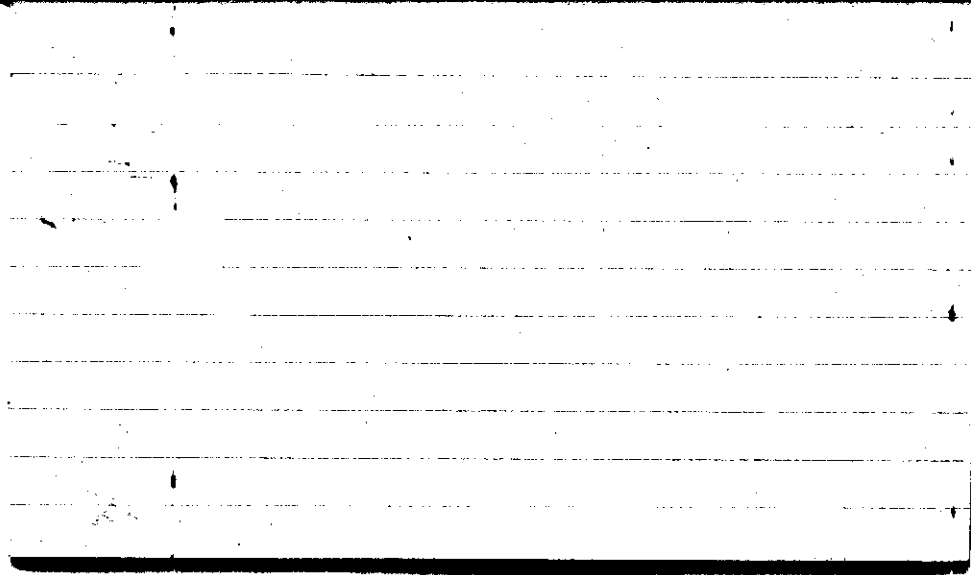
Time
0700

Max. 75	Wind P S 2	Barom. t 70	General Obs. =	
Min. 55	Vis. km. 5	P 29.05	1520-1620 9°	
Dry 65	Clouds 10	p(red.) 28.94	2230-2240 9	
Wet	St, Sc			
R.H. 95		Morn. ovc	Foren. ovc to ovc with breaks	
Precip. — mm / — in		Noon ovc	Aftern. ovc. drizzle	
Snowfall / -Depth in / — in		Eve. ovc	Night ovc drizzle	

HK



Max.	Wind F	Barom.	General Obs.
69	calm	t 74	0530 - 0830 1755-1825 °
Min. 63	Vis. km. 3	p 28.98	0900 - 1040 1855-1915 1010
Dry 64	Clouds 10	p(red.) 28.86	1120 - 1125 °
Wet	Ns (low)		1430 - 1435 °
R.H. 99			1520 - 1530 °
			1610 - 1640 °
			1640 - 1735 °
Precip. 3.1 mm / 0.12 in.		Morn. over rain	Foren. over shower
Snowfall/-Depth - in/ - in.		Noon over rain	Aftern. over rain
		Eve. over	Night over rain
			spec.



STATE COLLEGE, Pa. Date

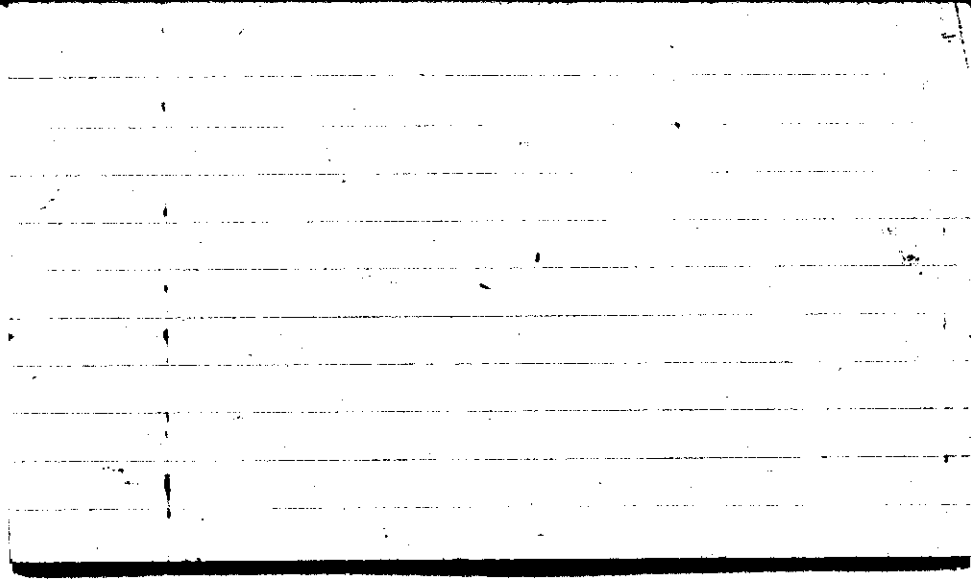
SEP - 9 1942

Time

0700

Max. 72	Wind F WSW 1	Barom. t 75	General Obs. °°	
Min. 63	Vis. km. 8	P 28.97	0120-0200 °°	1345 Tz
Dry 69	Clouds 10	p (red.) 28.85	0210-0350 / 9/	1400-1440 °
Wet	Fs Ns Sc		0430-0435 °°	2035-2040 °
R.H. 98			0510-0535 °°	2115-2125 °°
Precip.			0630-0705 °°	(ci flow)
2.0 mm / 0.97 in.			2220 8-2305	
Snowfall - Depth				
— in / — in.				

M

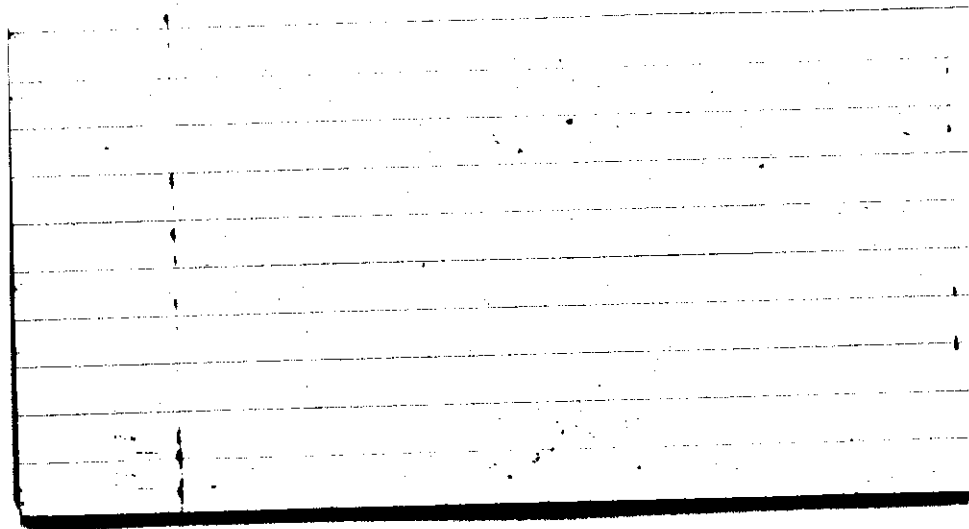


STATE COLLEGE, Pa. Date SEP 10 1942

Time

0700

Max. 83	Wind F W 3	Barom. t 77	General Obs.	
Min. 66	Vis. km. 15	p 28.94		
Dry 69	Clouds 9	p(red.) 28.81		
Wet	St. Fs			
R.H. 94	Sc Ac ci fil ci ps	Morn. cldy	Foren. cldy	
Precip. 1.4 mm / .06 in.		Noon cldy	Aftern. cldy	
Snowfall / -Depth — in / — in.		Eve. pty cldy ci fls fil, rra, cc,	Night pty cldy to fair	
AM		0716		

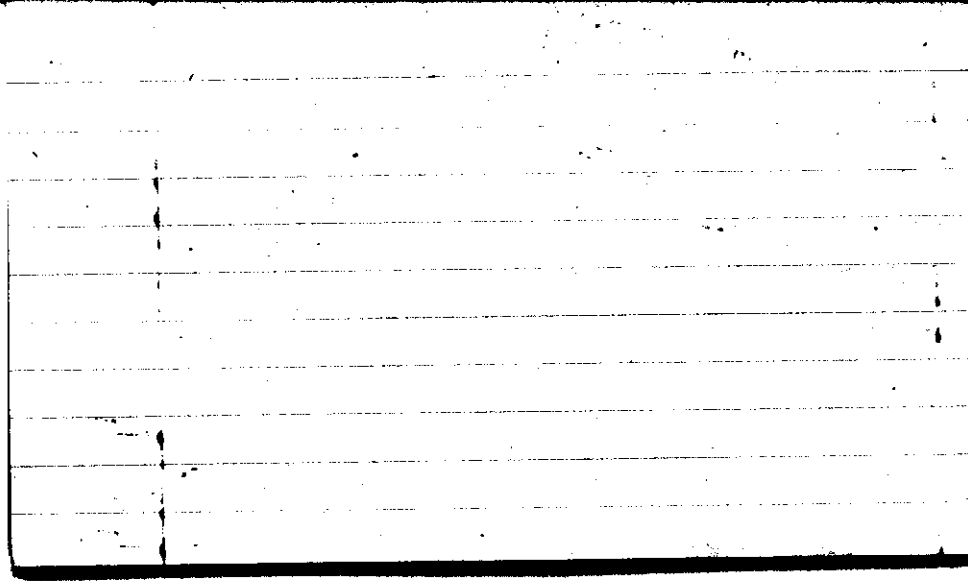


STATE COLLEGE, Pa. Date

SEP 11 1942

Time
0700

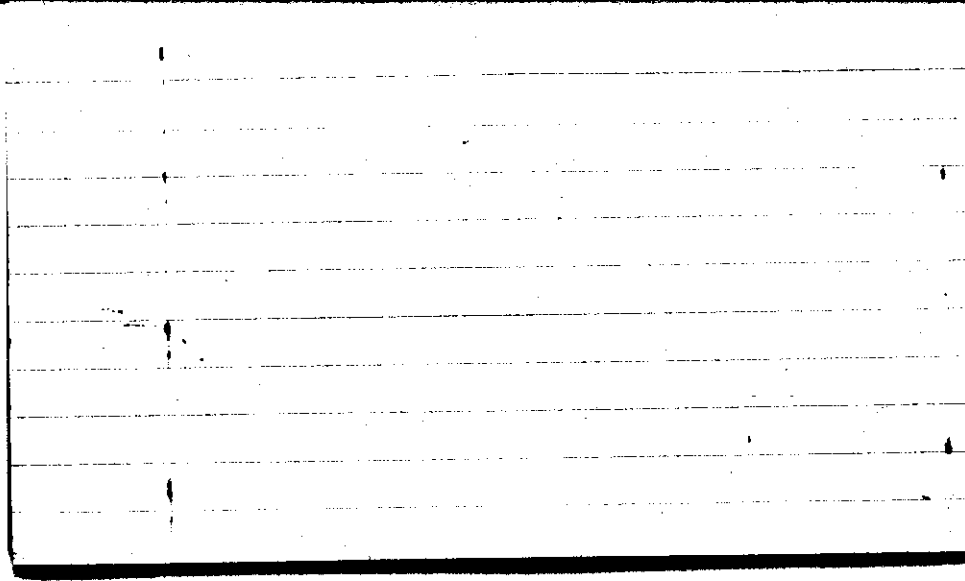
Max. 80	Wind F Calm	Barom. t 79	General Obs. 9°0635 - 0700	
Min. 61	Vis. km. 6	28.98	1020 - 1030 °	
Dry 63	Clouds st, Ns, Fs	p (red.) 28.85		
Wet	sc 10			
R.H. 97%		Morn. overcast. - 9	Foren. cldy	
Precip. .3 mm / .01 in.		Noon cldy	Aftern. cldy	
Snowfall / -Depth in / in.		Eve. cldy	Night cldy	
A.B.		0759		



STATE COLLEGE, Pa. Date **SEP 12 1942**

Time
0700

Max. 71	Wind NE 1	Barom. t 78	General Obs. ☁ ☁ ☁	1620-1635 (0) ci none ci den ci pra ci wht ci flw ci flt ci ce
Min. 59	Vis. km. 8	28.86		
Dry 60	Clouds Ac 1	p (red.) 28.73		
Wet				
R.H. 96		Morn. Fair = (calm) to pty cldy	Foren. cldy	
Precip. — mm / — in.		Noon ovc. As.	Aftern. pty cldy	
Snowfall / -Depth — in / — in.		Eve cldy	Night pty cldy	
A.S.		0915		

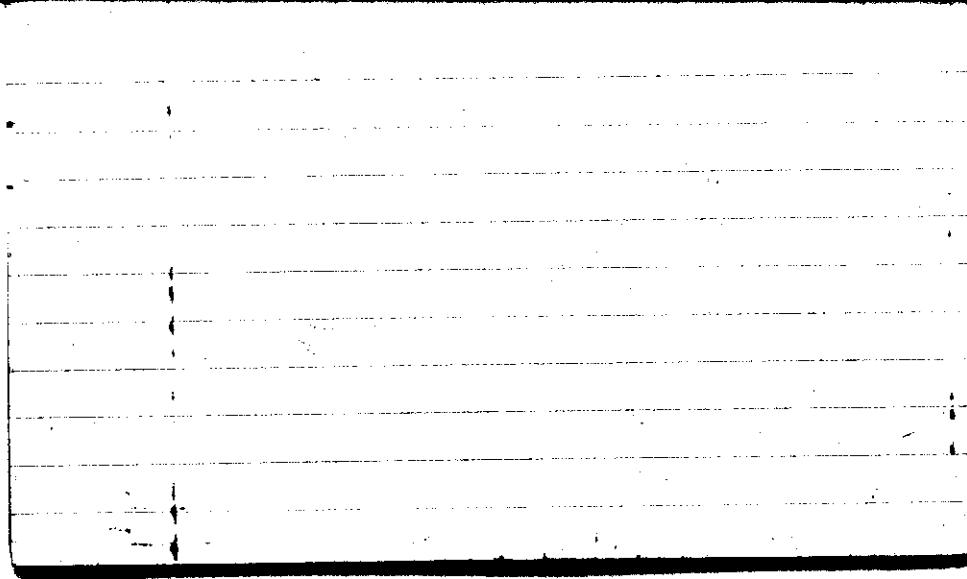


STATE COLLEGE, Pa. Date SEP 13 1942

Time
0700

Max. 76	Wind P N 1	Barom. t 78	General Obs. ∞ 1650-1720 (2)
Min. 60	Vis. km. 35	p 28.81	
Dry 60	Clouds Cc, Cs, Ac	p (red.) 28.68	
Wet	1		
R.H. 62		Morn. Clear Fair	Foren. fair Ci flams, ci pra ca
Precip. mm/ in.		Noon fair ci fl ci pra	Aftern. fair ci pra ci fl after Cs Grad
Snowfall/-Depth in/ in.		Eve. Clear	Night Clear

A.B.



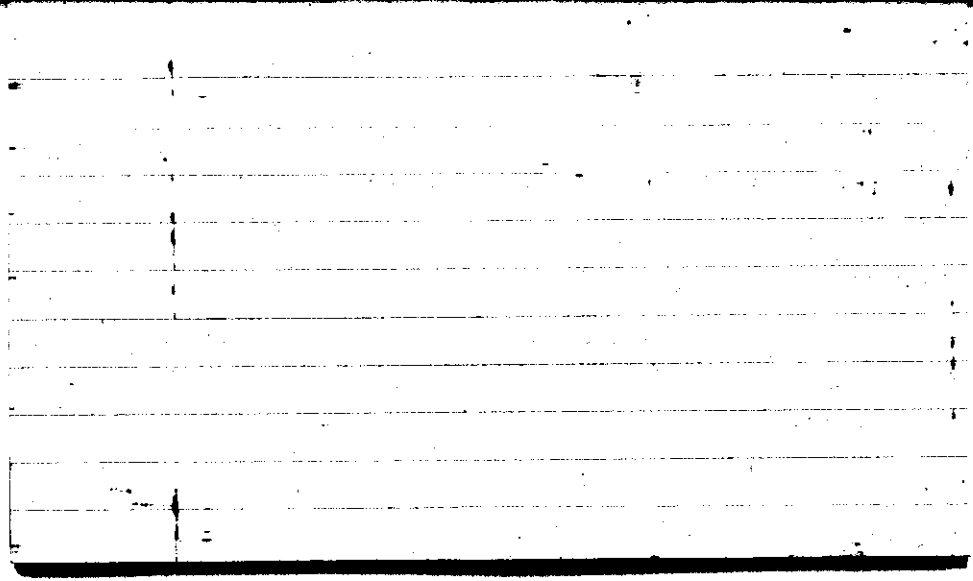
STATE COLLEGE, Pa. Date

SEP 14 1962

Time

0706

Max. 78	Wind P Calm	Barom. t 76	General Obs. SKY & h.c. 5-0100 L1 =
Min. 49	Vis. km. 16 Km	p 28.97	1300 ☉ - 1340 }
Dry 56	Clouds a fil cs. 1	p (red.) 28.85	
Wet			
R.H. 97%		Morn. fair a fil cs	Foren. clear
Precip. mm/ in.		Noon fair c: fil	Aftern. fair c: fil, cs, c: glo.
Snowfall/-Depth in/ in.		Eve. clear	Night clear
A.F.		0651	

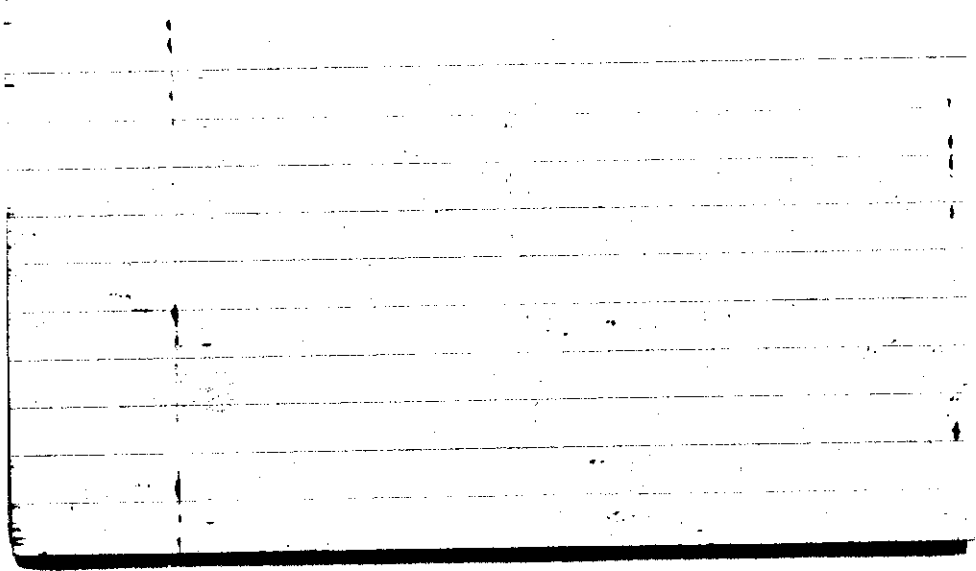


STATE COLLEGE, Pa. Date

SEP 15 1942

Time
0700

Max. 82	Wind F Calm	Barom. t 80	General Obs. =
Min. 54	Vis. km. 12	p 29.76	0045-0150 S 1240 W-1830
Dry 70	Clouds 0	p (red.) 29.82	1305-1420 0 1545-1710 2
Wet			1860 0.48 710 Sp. WR HV.
R.H. 92		Morn. Clear	Foren. clear to fair - fl, as fine, a mist
Precip. T mm / T in.		Noon pty dry to dry in mist.	Aftern. dry to over the sun to overcast
Snowfall/-Depth in / in.		Eve. pty dry	Night clearing
AB			0829

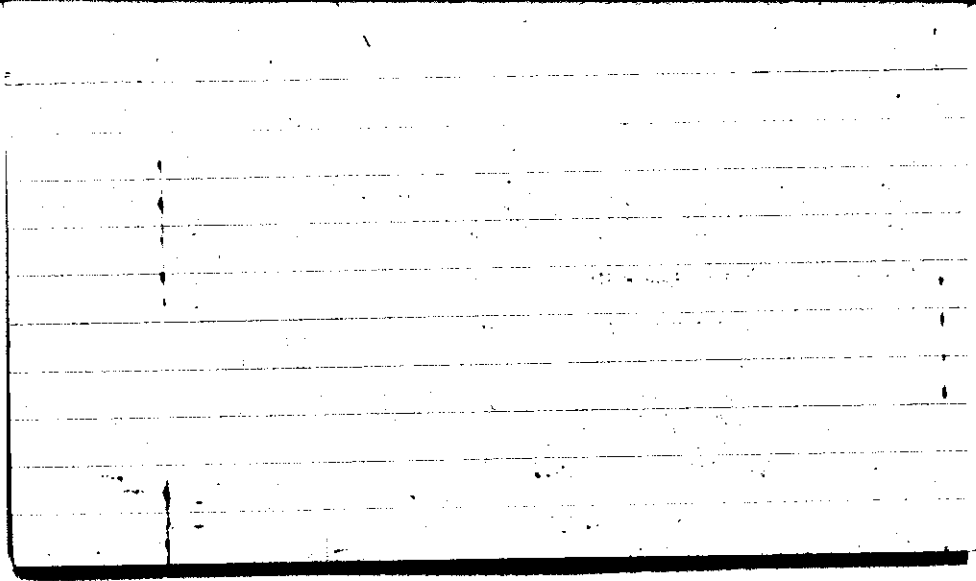


STATE COLLEGE, Pa. Date

SEP 16 1947

Time
6700

Max. 88	Wind P SW 1	Barom. t 79	General Obs. 0745-0800 °°
Min. 65	Vis. km. 10	p 29.00	1732-1735 °°
Dry 66	Clouds A, C 8	p (red.) 28.87	
Wet			
R.H. 92		Morn. pty cldy c/pn	Foren. pty cldy to fair
Precip. 12.3 mm / .48 in.		Noon fair	Aftern. pty cldy to cldy
Snowfall/-Depth — in / — in.		Evening raindrops	Night
A.S.		1426 9276	



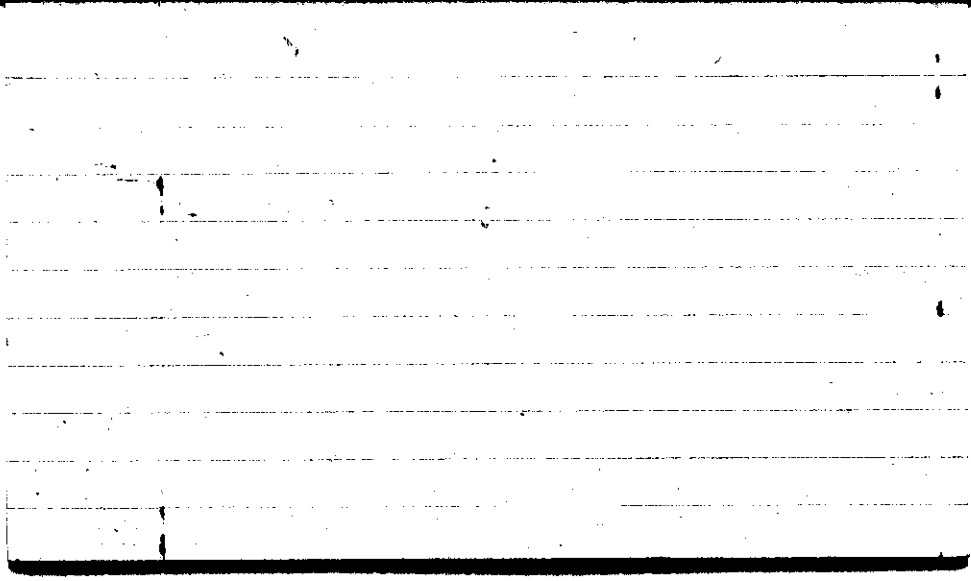
STATE COLLEGE, Pa. Date

SEP 17 1942

Time

0700

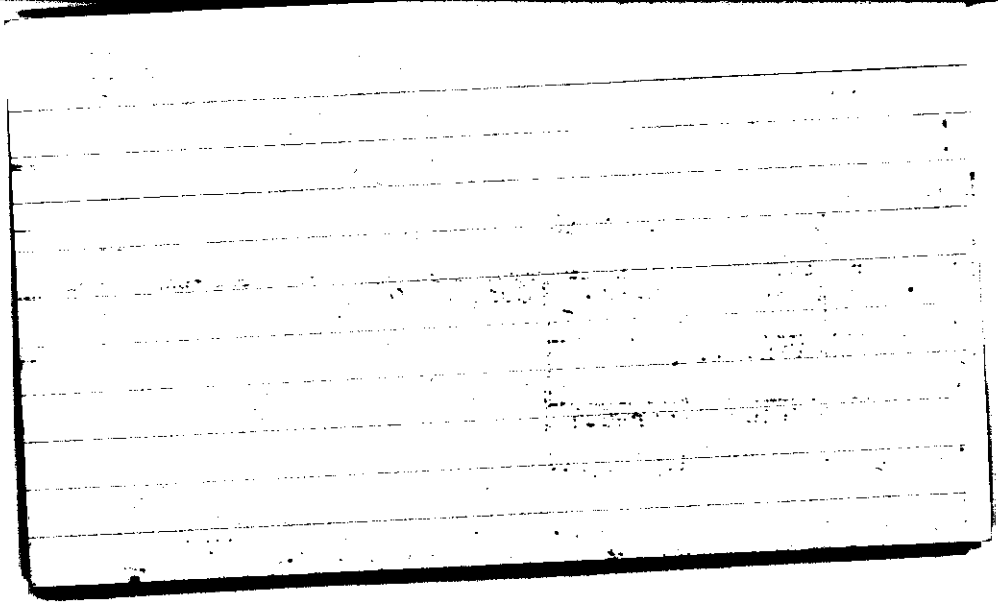
Max. 85	Wind F Calm	Barom. t 78	General Obs. $\Delta^2 =$
Min. 64	Vis. km. 3	p 29.00	15 15 0 1900
Dry 65	Clouds Ci-fl, Cpa	p (red.) 28.87	
Wet	Ci-fl, Cpa Ci unc.		
R.H. 98		Morn. Ptlly cldy light ground fog.	Foren. Ptlly cldy Ci unc, Ci fl.
Precip. T mm / T in.		Noon cldy	Aftern. ovc. rain
Snowfall / -Depth T in / T in.		Eve. ovc rain	Night cldy
A.M.			0735



STATE COLLEGE, Pa. Date **SEP 18 1942**

Time
0700

Max. 87	Wind NE 1	Barom. 80	General Obs.	
Min. 65	Vis. km. 3	28.93	$\Delta' =$	
Dry 67	Clouds st 10	p (red.) 28.80	0725-0815	1610-1640
Wet			0935-1015	1610-1640
R.H. 97			1050-1125	
			1115-1215	
			1240-1305	
			1420-1500	
Precip. 0.1 mm / T in.		Morn. Ovc., light fog	Foren. Ovc., Rainy	
Snowfall / -Depth - / - in.		Noon Ovc.,	Aftern. cldy., Rainy	
AM.		Eve. pty cldy.	Night Fair foggy	
			0730	

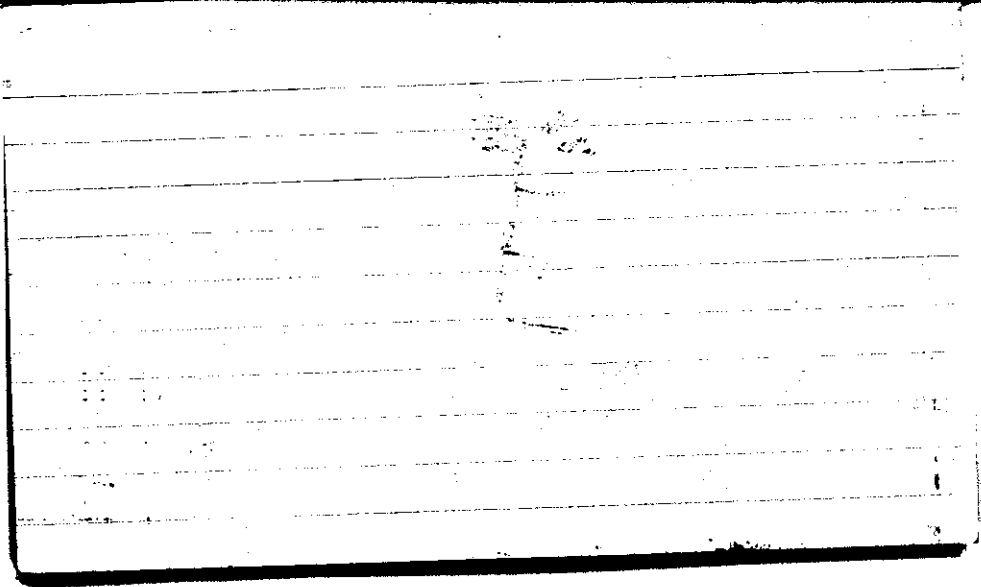


STATE COLLEGE, Pa. Date

SEP 19 1942

Time
0700

Max. 79	Wind F Calm	Barom. t 79	General Obs. ≡ ² α ²
Min. 64	Vis. km. 300 m.	p 28.86	1700 ° 1705
Dry 64	Clouds X	p (red.) 28.73	1855 ° 1925
Wet			1935 ° 2005
			2215 ° 2005 23.20
			2320 ° 2400+
R.H. 96		Morn. Foggy	Foren. Ptlly cldy
Precip. 1.9 mm / .08 in.		Noon Ptlly cldy	Aftern. Ptlly cldy → Cldy
Snowfall / -Depth - in / - in		Eve. Ptlly cldy rain	Night over rain shower
AM			0740



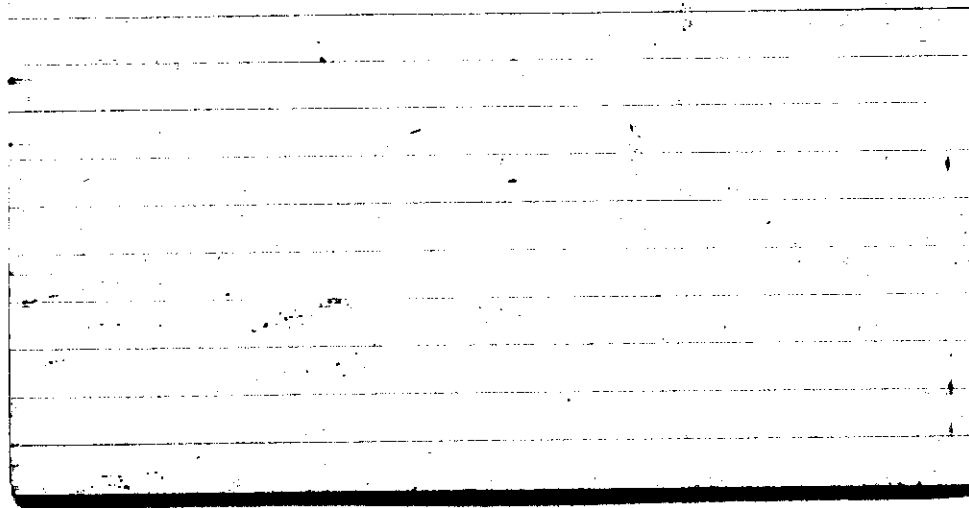
STATE COLLEGE, Pa. Date

SEP 20 1942

Time

0700

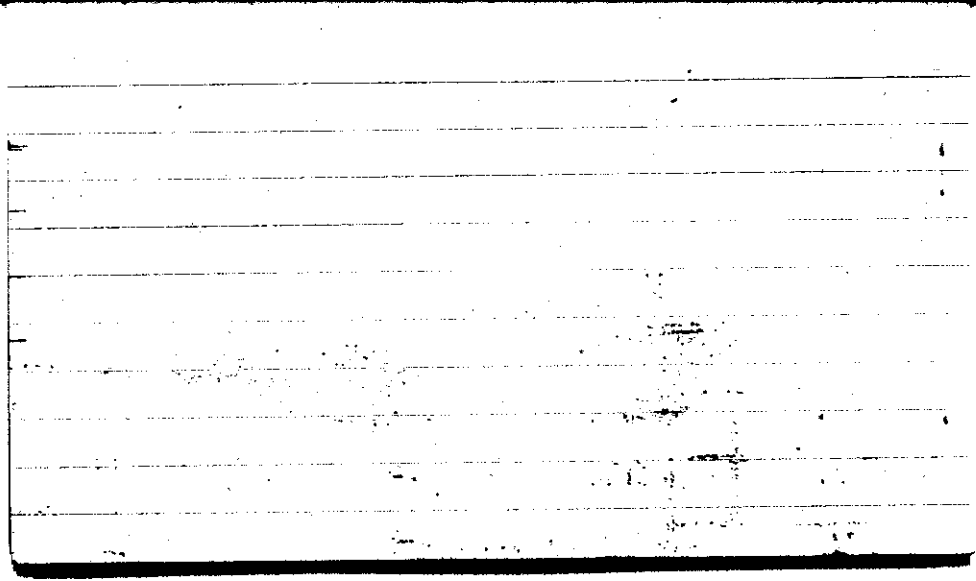
Max. 85	Wind F NW 3	Barom. t 80	General Obs. α^2 0000 \circ - 0050 0145 ∇ - 0210 0440 \circ - 0450
Min. 64	Vis. km. 25	p 28.75	
Dry 66	Clouds 9	p(red.) 28.62	
Wet	Sc		
R.H. 87		Morn. cldy ^{ovc, rain}	Foren. Cldy
Precip. 4.0 mm / 0.16 in.		Noon cldy.	Aftern. ovc.
Snowfall/-Depth in/ in.		Eve. Ovc.	Night Ovc.
AM. 0930			



STATE COLLEGE, Pa. Date SEP 21 1942

Time
0700

Max. 66	Wind P NW 1	Barom. t 68	General Obs. a ² ==	
Min. 40	Vis. km. 15	p 28.94		
Dry 43	Clouds 1	p(red.) 28.84		
Wet	Fc			
R.H. 95		Morn. Fair	Foren. clear	
Precip. — mm/ — in.		Noon clear	Aftern. clear	
Snowfall/-Depth — in/ — in.		Eve. clear	Night clear	

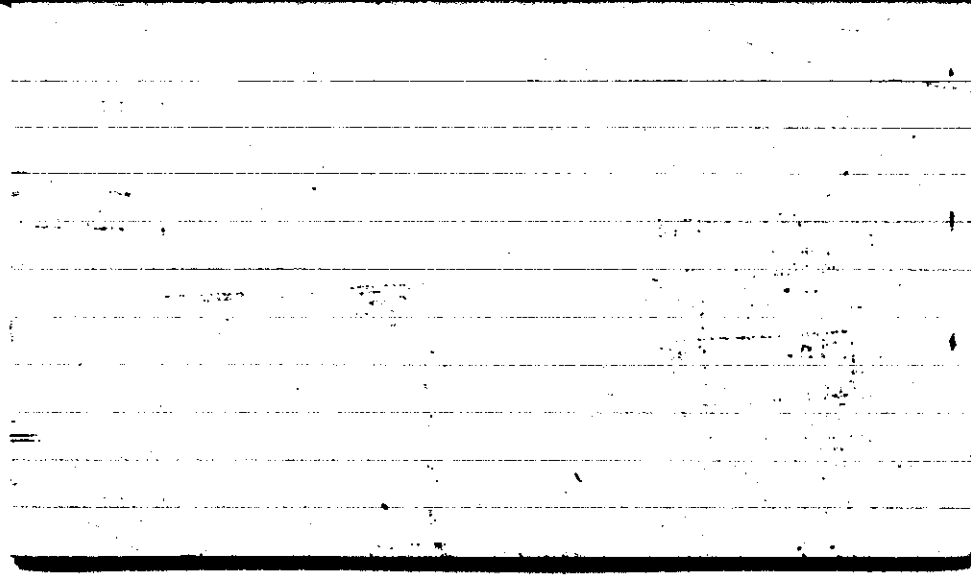


STATE COLLEGE, Pa. Date

SEP 22 1942

Time
0700

Max. 67	Wind \uparrow SW 1	Barom. t 64	General Obs. $\bar{u} = \bar{u}^2$
Min. 39	Vis. km. 7	p 28.75	
Dry 44	Clouds X	p (red.) 28.66	
Wet			
R.H. 82		Morn. clear	Foren. clear
Precip. — mm/ — in.		Noon clear	Aftern. clear
Snowfall/Depth — in/ — in.		Eve. <i>pty dry</i>	Night <i>pty dry</i>
AM		0700	

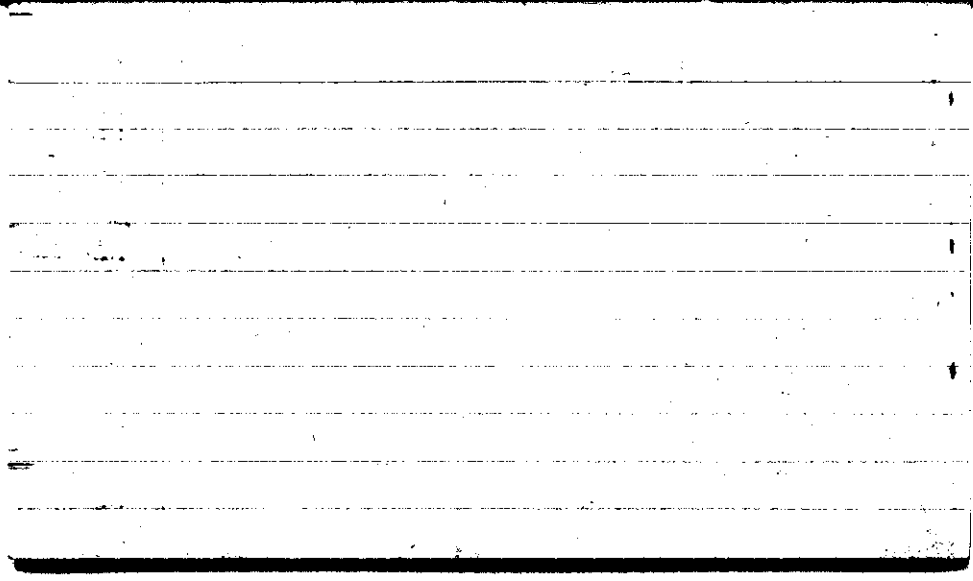


STATE COLLEGE, Pa. Date SEP 23 1942

Time
0700

Max. 68	Wind F NW 1	Barom. t 70	General Obs. 0 ² =	
Min. 41	Vis. km. 15	p 28.85	09:40 @ -1020	
Dry 41	Clouds 5	p(red.) 28.74		
Wet	Ac, C, fil, Cis, C, pro			
R.H. 94	cc	Morn. Pthy cldy	Foren. cldy	
Precip. — mm/ — in.		Noon cldy	Aftern. cldy to pty ds	
Snowfall/-Depth — in/ — in.		Eve. pty cldy to fi	Night	

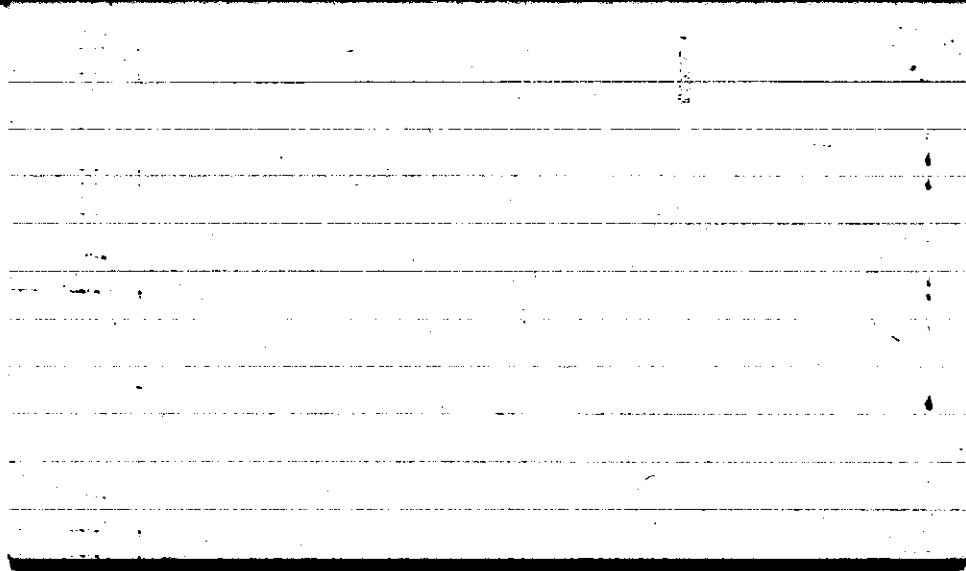
AM



Max.	Wind P	Barom.	General Obs.
65	SW 3	t 66	
Min. 41	Vis. km. 12	p 28.67	0854 - 0900
Dry 56	Clouds Ac, cc, Cl, loc	p(red.) 28.57	0930 - 1000 1000 - 1050
Wet	Fs 6		
R.H. 87		Morn. Ptlly cldy	Foren. ett overcast rain
Precip. mm/ in.		Noon cldy	Aftern. Ptlly cldy to fair
Snowfall/Depth in/ in.		Eve. fair	Night clear

A.B.

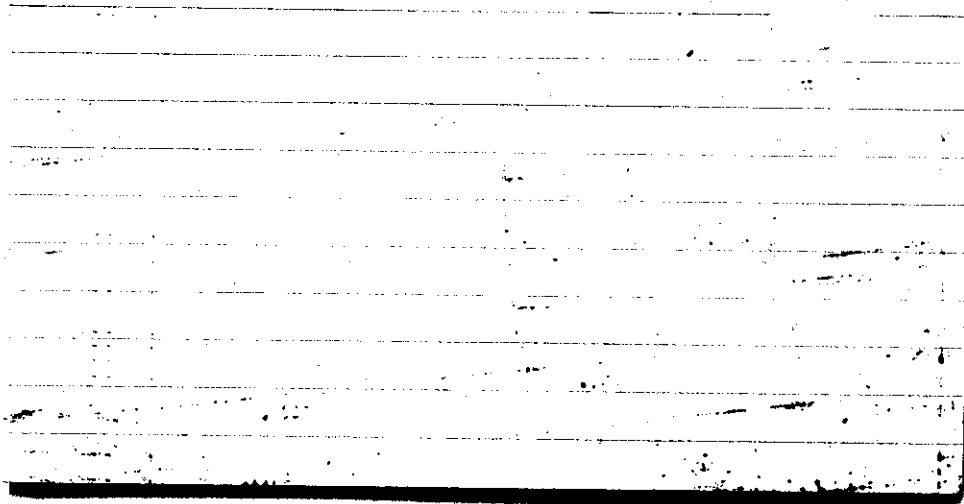
0650



STATE COLLEGE, Pa. Date SEP 25 1942

Time
0700

Max. 61	Wind F Calm	Barom. t 68	General Obs. == L° 1650 - 1745 (a)	
Min. 36	Vis. km. 15	p 29.07		
Dry 39	Clouds c/floc	p (red.) 28.97		
Wet	a fil.			
R.H. 78	1	Morn. Fair	Foren. Fair	
Precip. .02 in.		Noon Fair	Aftern. Fair	
Snowfall/-Depth in/ in.		Eve. Fair Ci, fil, Ci unc., Ci pra.	Night Fair Ci Vert	
.8		0734		

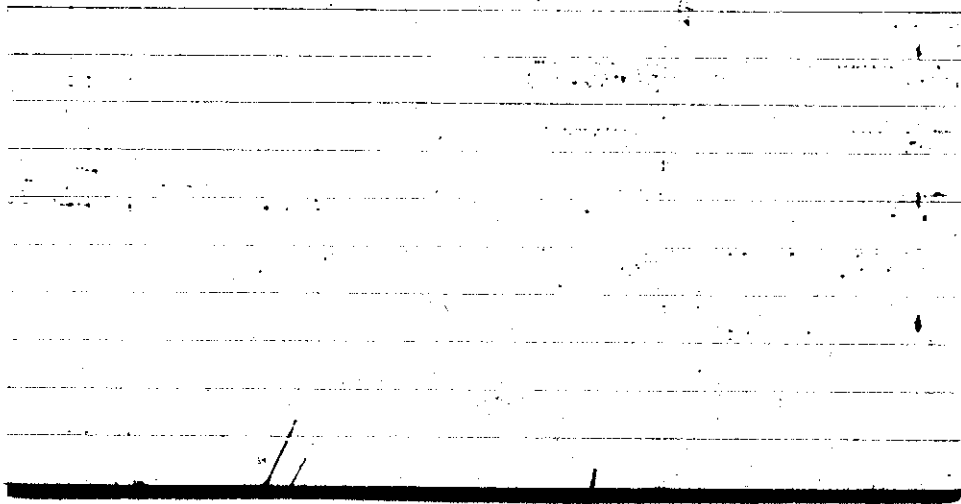


STATE COLLEGE, Pa. Date SEP 26 1942

Time

0700

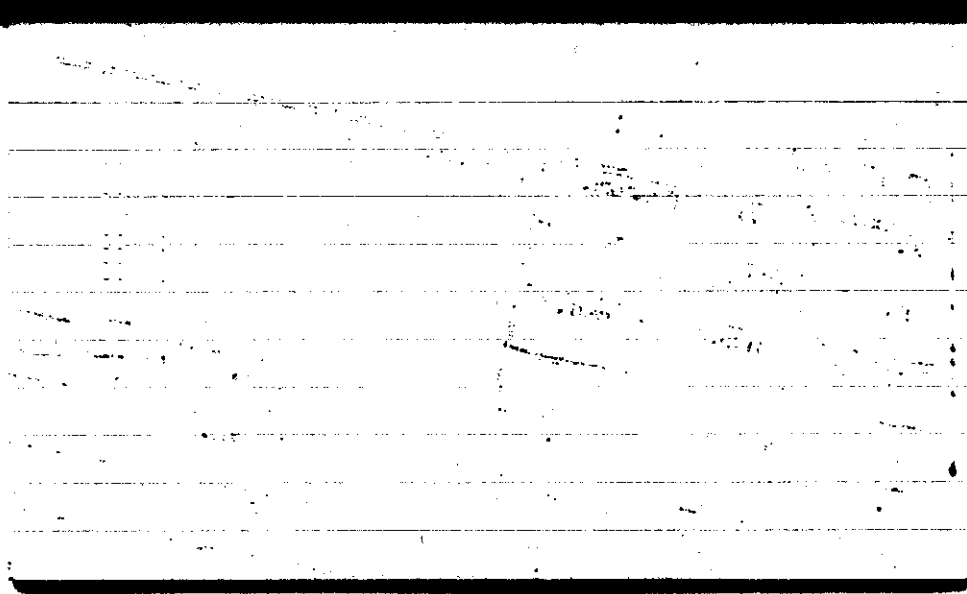
Max. 64	Wind P. NE 1	Barom. t 64	General Obs. ∞ (0645 ☉ - 0830)
Min. 39	Vis. km. 25	p 29.04	1550 ☉ - 1900
Dry 53	Clouds c _s , c _s , c _u fil, sc	p (red.) 28.95	1900 ☉' - 2400
Wet			
R.H. 58	7	Morn. ptly → Pth. cldy	Foren. Pth. cldy
Precip. — mm / — in.		Noon Pth. cldy → cldy	Aftern. cldy → ovcast.
Snowfall / -Depth — in / — in.		Eve. ovcast rain	Night ovcast. show
A. B.			034



SEP 27 1949

0700

Max. 65	Wind P SW 3	Barom. t 71	General Obs. 0000-0100 ●	Sp. 0010 EST 0.59" min Temp
Min. 53	Vis. km. 4	p 28.51	0130-0535 ●	AD
Dry 65	Clouds Ns	p (red.) 28.40	0600-1540 (●)	Sp. 1200 EST (AM) 0.45" shown 51°
Wet	10			Sp. 1800 EST (H.B) 0.75"
R.H. 96		Morn. Ovcst. Raining	Foren. rain shower over	
Precip. 25.0mm/.98 in.		Noon 12:00: 11.5mm=0.45" shower	Aftern. clear over rain to	
Snowfall/-Depth in/ in.		Eve. 1800: 0.75	Night clearing	
A.S.			0750	



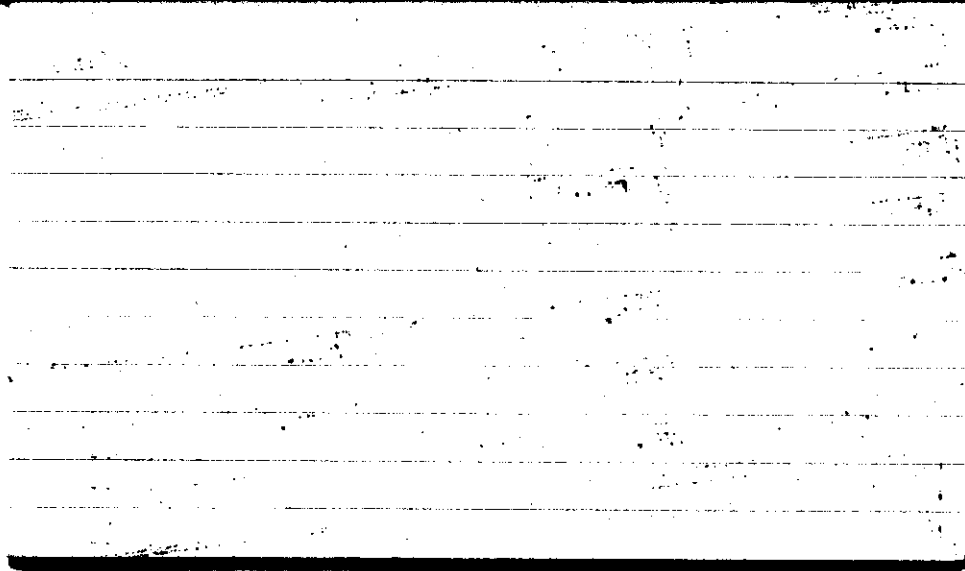
STATE COLLEGE, Pa. Date

SEP 28 1962

Time

0700

Max. 66	Wind F NW 3	Barom. + 66	General Obs. ∞	
Min. 40	Vis. km. 15	P 29.00	0200 - 0230 °	
Dry 40	Clouds Sc, Fc, Cu	p(red.) 28.90		
Wet				
R.H. 70	2	Morn Ptlly cloudy → fair	Foren. Ptlly cloudy	
Precip. 18.9 mm / .75 in.		Noon Ptlly cloudy	Aftern. Ptlly cloudy	
Snowfall / -Depth in / in.		Eve. Fair	Night fair	
A.B.	10.00	0700 0750		



STATE COLLEGE, Pa. Date

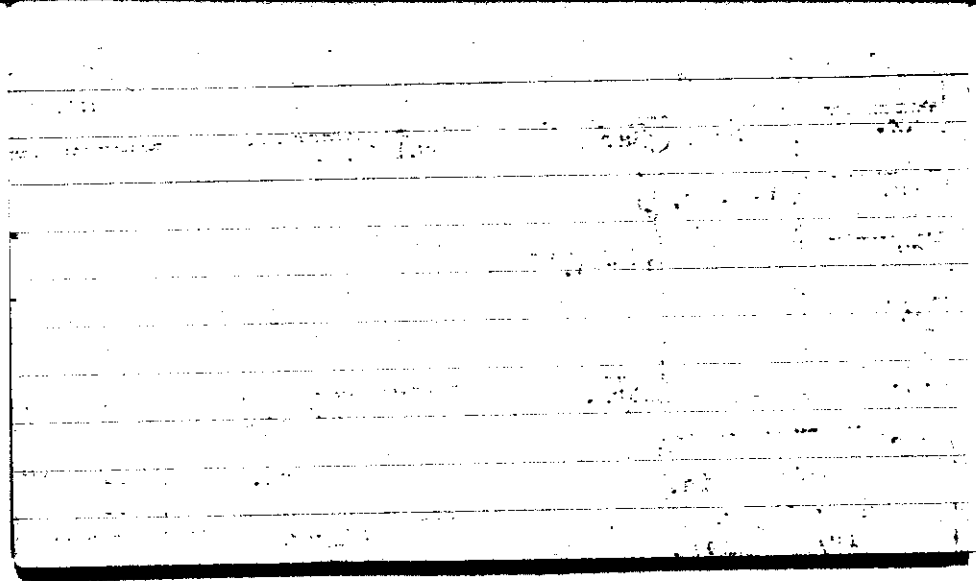
SEP 29 1942

Time

0700

Max. 52	Wind F Calm	Barom. t 68	General Obs. \sqcup 2 == 1000 (6) - ==° 1100	
Min. 30	Vis. km. 10	p 29.36		
Dry 31	Clouds 4	p (red.) 29.26		
Wet	C. flam C. pra C. fil			
R.H. 95	Cunc	Morn. pty cldy → fair	Foren. pty cldy	
Precip. _____ mm / _____ in.		Noon pty cldy	Aftern. fair	
Snowfall / -Depth _____ in / _____ in.		Eve. clear	Night clear fog	

AB



STATE COLLEGE, Pa. Date

SEP 30 1942

Time
0700

Max. 58	Wind F Calm	Barom. t 68	General Obs. = = =	
Min. 31	Vis. km. 7	p 29.22		
Dry 35	Clouds X	p(red.) 29.12		
Wet				
R.H. 94		Morn. Clear	Foren. Clear	
Precip. — mm / — in.		Noon Clear	Aftern. clear	
Snowfall/-Depth — in / — in.		Eve. clear	Night pky clry	
A. B.				

