

STATE COLLEGE, Pa. Date

DEC - 1 1942

Time
0700

Max. 39	Wind F 5 4	Barom. t 64	General Obs. ∞ 0910 * 1130 2310 * 2400 1130 * 1330 1330 * 1610 1610 * 1825 1825 * 1950 1950 * 2310
Min. 30	Vis. km. 15	p 28.61	
Dry 34	Clouds > 9	p(red.) 28.52	
Wet	St, As, Sc		
R.H. 65			
Precip. — mm / — in		Morn. Ck - Ovc.	Foren. Ovc.
Snowfall / -Depth — in / — in		Noon Ovc Snow & Rain	Light Snow Aftern. Ovc.
		Eve. Ovc. Rain showers	Snow & sleet Night Ovc. Rain showers

AM 0700

$\frac{1}{2}$
[Ksara] (3)₀

$\div 3$
-4 +1 5

-1.0 1.7

11

-3
-1

0.0

0.0

STATE COLLEGE, Pa. Date DEC - 2 1942

Time

0700

Max. 40	Wind F W 9	Barom. t 62	General Obs.	
Min. 21	Vis. km. 20	27.96	0000 $\frac{1}{2}$ 0050	10 ^h $\frac{0}{0}$ - 11 ^h
Dry 23	Clouds 9	27.88	0050 $\frac{1}{2}$ 0130	14 ^h $\frac{0}{0}$ - 1430
Wet	SC FC		0130 $\frac{1}{2}$ 0400	
R.H. 69			0400 $\frac{1}{2}$ 0415	
			0415 $\frac{1}{2}$ 0420	
			0420 $\frac{1}{2}$ - 2400	55 mph gusts of 80
Precip. 17.2 mm / 0.68 in.		Morn. cldy Light Snow	Foren. cldy Snow Flurries	
Snowfall / -Depth 0.8 in / T in.		Noon cldy morg.	Aftern. cldy morg.	
AM. 0705		Eve. WNW 55 mph. with strong gusts morg. cldy	Night cldy stormy	

-3

-0.3 2.5

Königsberg (10) -14 + 11 = 25

-1
0
1
-3
-4
-4
-2

0.0
0.0

STATE COLLEGE, Pa. Date

DEC - 3 1942

Time

0700

Max. 23	Wind F W 9	Barom. t 54	General Obs. / * 0000 - 0430
Min. 7	Vis. km. 6	p 28.46	
Dry 10	Clouds As, Fs 9	p (red.) 28.39	
Wet	Sc		
R.H. 52		Morn. cldy.	Foren. pty cldy - Fair
Precip. T mm / T in.		Noon Fair	Aftern. Fair → clear
Snowfall / -Depth T in / T in.		Eve. Fair	Night pty cldy
A.B.	0743		

Riverside

-1	2		30
-1	1		-33
-4	3		
-6	1		+49
7	-1	"	
9	-2		+16
7	0		
-1	-1		82
9	0		+0.5
0			
-1			2.7
-5			
-3			
9			
0			
-1			
-1			
2			

STATE COLLEGE, Pa. Date

DEC 4 - 1942

Time
0700

Max. 18	Wind F SW 4	Barom. t 57	General Obs. no 0825 * - 114
Min. 7	Vis. km. 7	p 28.64	
Dry 16	Clouds 7	p(red.) 28.57	
Wet	Sc, As		
R.H. 61		Morn. Ptlly. cldy.	Foren.
Precip. — mm / — in.		Noon Ptlly cldy → Fair	Aftern. Fair → Ptlly cldy
Snowfall / -Depth — in / — in.		Eve. Ptlly cldy - cldy	Night cldy
A.B.			

[Riverview] (1) -8 -8 -80 8.0
-8

STATE COLLEGE, Pa. Date

DEC -5 1942

Time
0700

Max. 25	Wind F W 4	Barom. t 66	General Obs. 0610 * - 10:00 2120 - 2400
Min. 15	Vis. km. 6	p 28.93	
Dry 22	Clouds 9	p(red.) 28.83	
Wet	Sc, As		
R.H. 68		Morn. <i>cldy</i>	Foren. <i>ptly cldy to fair</i>
Precip. <i>F</i>	<i>mm</i> / <i>T</i> in.	Noon <i>ptly cldy</i>	Aftern. <i>ptly cldy to cldy</i>
Snowfall / -Depth	<i>F</i> in / <i>T</i> in.	Eve. <i>cldy to over.</i>	Night
A. 13 0900			

Rome

(4)

-2

-8

8

+8

0

16

0.0

4.0

STATE COLLEGE, Pa. Date

DEC - 6 1942

Time
0700

Max. 31	Wind F Calm	Barom. t 69	General Obs. ∞
Min. 20	Vis. km. 6	p 28.81	0000 - 0650 * ¹ / ₁ * ¹ / ₁ °
Dry 24	Clouds st, sc, As	p (red.) 28.70	
Wet	9		
R.H. 96		Morn. cldy *	Foren. Ptlly cldy
Precip. 1.9 mm / 0.08 in.		Noon Ptlly cldy	Aftern. cldy
Snowfall / -Depth 1.6 in / 1.6 in.		Eve. Cldy	Night cldy
A.B.	0725		

+3

Pray de D'onne (2) -1 +4 5 +1.5 2.5

(1)

-1

+3

+3

3

+30

30

STATE COLLEGE, Pa. Date DEC -7 1942

Time
0700

Max. 33	Wind F W 2	Barom. t 70	General Obs.
Min. 23	Vis. km. 25	p 29.11	
Dry 28	Clouds 9	p(red.) 29.00	
Wet	Sc.		
R.H. 60		Morn. Cldy	Foren. Cldy
Precip. — mm / — in.		Noon Cldy	Aftern. Cldy → Ptlly Cldy
Snowfall / -Depth — in / 0.8 in.		Eve. Ptlly Cldy → fair	Night Fair → Clear
H. R.			

STATE COLLEGE, Pa. Date

DEC 8-1941

Time
0700

Max. 32	Wind F NNE 1	Barom. t 64	General Obs. ∞ LI
Min. 18	Vis. km. 30	p 29.28	
Dry 18	Clouds 0	p(red.) 29.19	
Wet			
R.H. 85		Morn. Clear	Foren. Clear
Precip. mm/ in.		Noon Clear	Aftern. Clear
Snowfall/-Depth in/0.3 in.		Eve. Fair → Pky cly	Night. Pky cly - clear
A.B.			

Prague (2) ⁻⁹ -9 / 9 -4.5 4.5
-3 -5 (2)
-6 1
-5
+1
-4
6
-2.0
3.0

STATE COLLEGE, Pa. Date

DEC 9-1942

Time
0700

Max. 34	Wind F SSW 2	Barom. t 71	General Obs. ∞ 0500 * - 0730
Min. 16	Vis. km. 6	29.04	0730 - * ⁰ - 0920
Dry 31	Clouds 10	p (red.) 24.93	0920 - * ¹ - 0935
Wet			0935 - * ⁰ - 1015
R.H. 55	Sea 5/5	Morn. Over. * ⁰	Foren. Over. , Snow
Precip. T mm / T in.		Noon Over.	Aftern. Over.
Snowfall/-Depth T in / T in.		Eve. cldy	Night cldy
4.0		0805	

Prato

131

09/10

+ 7

+ 7

7

+ 2.3

2.3

STATE COLLEGE, Pa. Date

DEC 10 1942

Time
0700

Max. 34	Wind F N 1	Barom. t 67	General Obs. L ² = 1305 (a) - 1400	
Min. 24	Vis. km. 2	p. 29.15	17 ¹ ° 0715 - 1030	
Dry 25	Clouds 10	p(red.) 29.05	19 ¹ ° 2130 - 2230	
Wet	As			
R.H. 93		Morn. <i>ovc. Foggy</i>	Foren. <i>ovc foggy</i>	
Precip. 0.3 mm / 0.01 in.		Noon <i>ovc. foggy</i>	Aftern. <i>ovc</i>	
Snowfall/-Depth 0.2 in / T in.		Eve. <i>ovc drizzle</i>	Night <i>ovc</i>	

AM

STATE COLLEGE, Pa. Date DEC 11 1942

Time
0700

Max. 40	Wind F SW 4	Barom. t 65	General Obs. ∞
Min. 23	Vis. km. 15	p 28.91	
Dry 37	Clouds 8	p (red) 28.81	
Wet	Fs, Ci, pd. Sc Fs		
R.H. 69		Morn. Pky cldy → cldy	Foren. cldy Ci Fil, Ci flo., Cs
Precip. T mm / T in.		Noon cldy	Aftern. cldy
Snowfall / -Depth — in / T in.		Eve. cldy	Night cldy

☉ 1015
☉ 1200-1600

AM 0645

(76) -122 + 56 = 66 178 -0.9 2.3

27	-73 + 23 = 50	96	-1.9	36
28	-26 + 20 = 6	46	-0.2	16
31	-23 + 13 = 10	86	-0.5	1.7

China

30-32

STATE COLLEGE, Pa. Date DEC 12 1942

Time
0700

Max. 44	Wind F W 6	Barom. t 70	General Obs. ∞
Min. 32	Vis. km. 25	p 28.66	0120 v° 0235
Dry 33	Clouds 4	p(red.) 28.55	0235 1° 0405
Wet	Sc		1715 *° 2210
			2340 *° 2400
R.H. 53		Morn. pty cldy	Foren. cldy → pty cldy
Precip. 0.2 mm / 0.01 in.		Noon Fair → pty cldy	Aftern. Fair
Snowfall / -Depth		Eve. cldy	Night ovc.
— in / T in.			

AM 0710

Azores (2) ⁰ -1 +1 2

0.0 1.0

-1

1

STATE COLLEGE, Pa. Date

DEC 13 1942

Time

0700

Max. 36	Wind F NW 5	Barom. t 71	General Obs.	
Min. 18	Vis. km. 3	p 28.51	0000 X° 0040	ei fine Irid.
Dry 18	Clouds 10	p (red.) 28.40	0110 X° 0630	
Wet	As, Fs		0715 X° - 1900	
R.H. 70		Morn. Ovc.	Foren. Ovc., Snow	
Precip. 0.7 mm / 0.03 in.		Noon cldy, Snow	Aftern. Ovc., Snow	
Snowfall / -Depth 0.6 in / 0.5 in.		Eve. Ovc., Snow to dry	Night Ovc. pte. dry	
AM 0730				

STATE COLLEGE, Pa. Date DEC 14 1942

Time
0700

Max. 20	Wind F WSW 3	Barom. t 67	General Obs. ∞	
Min. 11	Vis. km. 25	p 29.11		
Dry 11	Clouds 4	p(red.) 29.01		
Wet	Se, Ac Ci fil.			
R.H. 69	Ac lent	Morn. Pfly cldy	Foren. pty cldy	
Precip. T mm/ T in.		Noon cldy	Aftern. cldy to eve	
Snowfall/-Depth T in/ 0.4 in.		Eve. Cldy	Night cldy	
AM 0725				

4.3

+2.3

13

+ 7

+ 10

- 3

(3)

4.4 -3.3

31 + 4 -27 (7)

-23

Bohm (7)

5

3

3

-9

-3

-6

0

-9

STATE COLLEGE, Pa. Date DEC 15 1942

Time 0700

Max.	Wind F	Barom.	General Obs.
27	W 3	t 69	∞ =
Min. 11	Vis. km. 7	p 28.79	0745 * 1340
Dry 27	Clouds 9	p (red.) 28.69	1340 * 1400
Wet	As		1400 * 1600
R.H. 73			1600 * 1840
			1840 * 2045
			2045 * 2150
			2150 * 2300
			2300 * 2400
Precip. — mm / — in.		Morn. ovc	Foren. Ovc.
		Light Snow	Light Snow Flurrier
Snowfall / -Depth — in / T in.		Noon ovc.	Aftern. Ovc.
		Light Snow	Light Snow
		Eve. Ovc.	Night Ovc.
		Light Snow	Snow
AM 0630			

STATE COLLEGE, Pa. Date

DEC 16 1942

Time
0700

Max. 35	Wind F NW 4	Barom. t 78	General Obs.	
Min. 25	Vis. km. 30	p 28.62	0000 - *° 0050	ci floc ci floc cc
Dry 25	Clouds 10	p (red.) 28.49	0050 *° 0140	
Wet	As, Sc, Fs		0140 1x1° - 1420	
R.H. 62		Morn. Obs. Snow Flurries	*° 2330 - 2400	
Precip. 0.8 mm / 0.03 in.		Noon dry x ps	Foren. dry x ff	
Snowfall / -Depth 0.4 in / 0.4 in.		Eve. dry	Aftern. dry dry	
			Night dry	
				AM

$^+2$
[Calculus] (3) -1 +3 4 +0.6 1.3
2 (1)
-1 -5
/ -5
5
-5.0
5.0

STATE COLLEGE, Pa. Date

DEC 17 1942

Time
0700

Max. 27	Wind F W 3	Barom. t 79	General Obs. 0000 - 0300/x10 ⁰	1215-1300 cs with sun
Min. 14	Vis. km. 6	p 28.86	0900/x10-1045	
Dry 16	Clouds 9	p(red.) 28.73	1420 2400 $\frac{5}{8}$	
Wet	As AL			
R.H. 65				
Precip. T mm/ T in		Morn. cdy	Foren. cdy	
Snowfall/Depth T in/ 0.4 in.		Noon cdy cs As	Aftern. over As	
		Eve. over snow	Night snow	
				0830

Besaran		(21)	-19	+50	69	+15	3.3
6	3						14
8							-3
4							+11
1							+8
-8							14
0							+2.0
6							3.5
-2							
1							
3							
2							
-4							
-2							
-1							
-2							
3							
1							
0							

STATE COLLEGE, Pa. Date DEC 18 1942

Time 0700

Max. 28	Wind F NW 3	Barom. t 78	General Obs. <input checked="" type="checkbox"/>
Min. 16	Vis. km. 8	p 28.88	*'0000-0320 \rightarrow \downarrow
Dry 24	Clouds 10	p(red.) 28.75	*'0805-2400
Wet	st		
R.H. 75	st	Morn. over	Foren. over, snow
Precip. 9.3 mm / 36 in.		Noon over snow	Aftern. dry snow
Snowfall/-Depth 7.2 in / 7.2 in		Eve. dry snow	Night dry snow

HN 0800

Athens (2) -1 +1 - 2

0.0 1.0

-1

1

STATE COLLEGE, Pa. Date **DEC 19 1942**

Time
0700

Max. 30	Wind F NW 5	Barom. t 77	General Obs. \uparrow <input checked="" type="checkbox"/> u. f. c. w. p. l. o. 0000-0600 \times \circ 1845-2400
Min. 18	Vis. km. 60	p 29.16	
Dry 18	Clouds 4	p (red.) 29.03	
Wet	Sc		
R.H. 49		Morn. pty. cldy	Foren. pty. cldy
Precip. 0.9 mm / 0.04 in.		Noon pty. cldy to fair	Aftern. fair
Snowfall / -Depth 0.6 in / 7.0 in.		Eve. fair	Night pty. cldy to cldy
HV 0730			

Bozeman

(5)

5

/

1

+11

6

+11

11

+2.2

2.2

STATE COLLEGE, Pa. Date

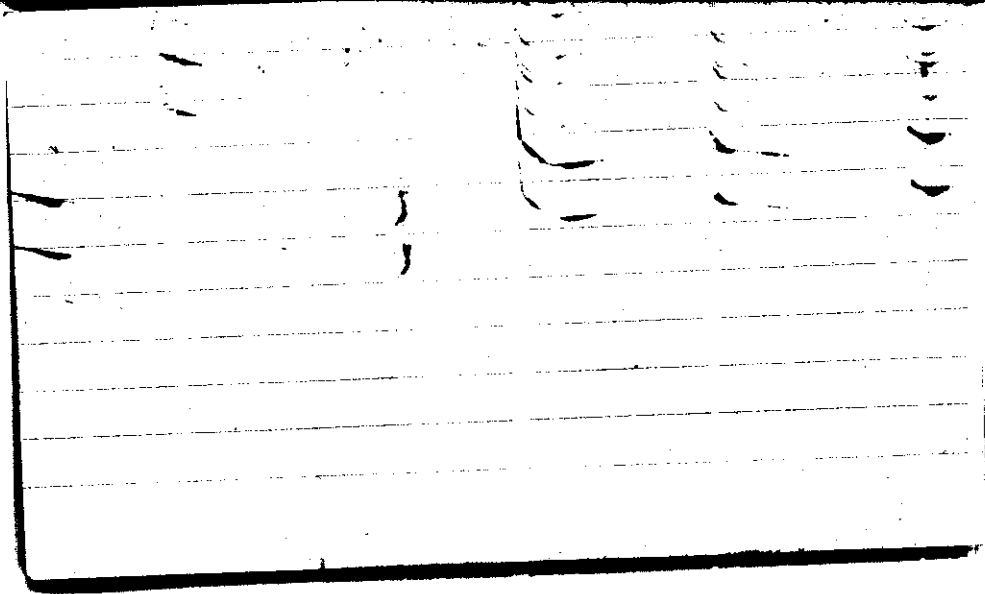
DEC 20 1942

Time

0700

Max. 21	Wind P NNE 2	Barom. t 78	General Obs.	
Min. 4	Vis. km. 15	p 29.25	☉ 0000-0200 ☽ 0900-1030	
Dry 5	Clouds 10	p(red.) 29.12		
Wet	St.			
R.H. 57		Morn. over. to cloudy	Foren. pty cloudy	
Precip. — mm/ — in		Noon fair	Aftern. fair usual.	
Snowfall/-Depth — in/ 5.6 in		Eve. fair ^{at} _{at} pre	Night fair to cloudy	

HN



STATE COLLEGE, Pa. Date

DEC 21 1942

Time

7:00

Max. 11	Wind F WSW 2	Barom. t 75	General Obs. <input type="radio"/> <input checked="" type="checkbox"/>	
Min. -6	Vis. km. 12	p 29.36	⊙ 2200-2400 as usual a fl	
Dry 0	Clouds 1	p(red.) 29.24		
Wet	As			
R.H. 68		Morn. fair to dry	Foren. dry	
Precip. — mm/ — in.		Noon pkly dry	Aftern. clear	
Snowfall/-Depth — in/ 4.9 in.		Eve. fair	Night fair	
HN				

Brammer

$\frac{9}{2}$

(4)

-1

+14

+13

15

+3.2

3.8

STATE COLLEGE, Pa. Date

DEC 22 1942

Time

0700

Max.	Wind F	Barom.	General Obs.
20	SW 3	t 72	9° 1100-1300 0845 100 - 1000 C1 neb.
Min. 0	Vis. Km. 15	29.01	• 1300 - 1815
Dry 17	Clouds 8	o (red.) 28.90	• 1835 - 2035 • 2130 - 2135
Wet	Ac		• 2235 - 2375
R.H. 42		MOON: cldy	MOON: over
Precip. — mm / — in.		Noon drizzle glaze	Aftern. rain glaze
Snowfall / - Depth — in / 4.2 in.		Eve. rain, glaze	Night rain

HN

The following reference is missing in the

College Library

Author:

Title:

Year:

Price:

Purchase is desirable: immediately

eventually

Please fill out and give either to Miss

Luella Jackson or H. Landberg. Your

cooperation is appreciated.

STATE COLLEGE, Pa. Date DEC 23 1942

Time
0700

Max. 36	Wind F SW 2	Barom. t 81	General Obs. =
Min. 16	Vis. km. 6	28.80	9° 0320-0350
Dry 36	Clouds 10	28.66	9° 1020-1035 } rays 9° 1250-1335 } 9° 2340-2350 }
Wet	Sc		
R.H. 95		Foren. cldy glaze	Foren. no. drizzle
Precip. 3.8 mm / 15 in		Noon no. drizzle	Aftern. no
Snowfall / - Depth 2 in / 4.0 in		Eve. no.	Night no. drizzle

The following reference is missing in the
College/M.I. Library:

Author:

Title:

Year:

Price:

Purchase is desirable: immediately

eventually

Please fill out and give either to Miss

Luella Jackson or H. Landberg. Your

cooperation is appreciated.

STATE COLLEGE, Pa. Date **DEC 24 1942**

Time
0700

Max. 38	Wind F W 2	Barom. t 83	General Obs. =	<div style="border: 1px solid black; padding: 5px; display: inline-block;"> 1545 (10) - is den. 1600 </div>
Min. 34	Vis. km. 5	p 28.92	9° 0020-0110	
Dry 35	Clouds 10	p(red.) 28.78		
Wet	St			
R.H. 90		Morn. over	Foren. over to dry	
Precip. T mm / T in.		Noon dry	Aftern. dry to over	
Snowfall/-Depth - in / 3.0 in.		Eve. over	Night over	
MN				

STATE COLLEGE, Pa. Date

DEC 25 1942

Time

0700

Max. 40	Wind F calm	Barom. t 78	General Obs. =	1445-1500 ☉ in flame ☿ in flame
Min. 34	Vis. km. 2	29.04	• 1820-1940 * 1940-2305	
Dry 35	Clouds 10	(red.) 28.91		
Wet	st			
R.H. 88		MORN. over. foggy	Foren. over foggy	
Precip. — mm/ — in.		Noon over foggy	Aftern. over foggy to over	
Snowfall, — in/ — in.	Depth 2.7 in.	Eve. foggy over rain	Night rain snow over foggy.	
		700		

The following reference is missing in the
College/M.I. Library:

Author:

Title:

Year:

Price:

Purchase is desirable: immediately eventually

Please fill out and give either to Miss

Lucille Jackson or H. Landberg. Your

cooperation is appreciated.

STATE COLLEGE, Pa. Date

DEC 26 1942

Time
0700

Max. 39	Wind P WNE 2	Barom. t 80	General Obs. ≡
Min. 32	Vis. Km. 0.5	29.23	9° 0245 - 0920
Dry 35	Clouds 10	(red.) 29.09	0° 2105 - 2135
Wet	Ns		
R.H. 97		Morn. drizzle on for	Foren. are slight
Precip. 2.0 in/ .08 in.		Noon on	Aftern on
Snowfall, - Depth 0.5 in/ 2.1 in.		Eve. on re - 2.1 in	Night on

HN

The following reference is missing in the
College/W.I. Library:

Author:

Title:

Year:

Price:

immediately
Purchase is desirable; eventually

Please fill out and give either to Miss

Lucille Jackson or H. Landsberg. Your

cooperation is appreciated.

STATE COLLEGE, Pa. Date

DEC 27 1942

Time
0700

Max. 36	Wind F SSE 3	Barom. t 77	General Obs. ∞ ° 0830 - 0930 ~ ° 0930 - 1500 ° 1530 - 1535 lat 1630 - 3100 - ~ 2100 - 2400
Min. 28	Vis. km. 10	p 29.47	
Dry 29	Clouds 10	p (red.) 29.34	
Wet	Sc		
R.H. 74		Morn. <i>ovc. drizzle</i>	Foren. <i>ovc. rain</i>
Precip. T mm / T in.		Noon <i>ovc. rain</i>	Aftern. <i>ovc. rain</i>
Snowfall / -Depth — in / 1.0 in.		Eve. <i>ovc. rain</i>	Night <i>ovc. snow</i>

HN

Bruffel

2	4	(21)
1		-5
0		+44
2		+39
<u>6</u>		49
0		+1.9
6		2.3
0		
3		
1		
3		
7		
1		
<u>1</u>	4	
2		
3		
1		

STATE COLLEGE, Pa. Date

DEC 28 1942

Time

0700

Max. 35	Wind F calm	Barom. t 77	General Obs. =
Min. 28	Vis. km. 1 1/2	p 28.97	☉ 0000-0240 ● 0240-2015 ● 2110-2315 ● 2355-2400 +
Dry 34	Clouds 10	p(red.) 28.87	
Wet	Ns		
R.H. 100		Morn. <i>occ. rain</i>	Foren. <i>occ rain</i>
Precip. 16.8 mm / 0.66 in.		Noon " "	Aftern. " "
Snowfall/-Depth T in / T in.		Eve. " "	Night " "

HN

+2

-	Chick (4)	-7 +9	16	+0.5	4.0
	9	7			(6)
	-1	7			
	-3	0			-7
	-3	-7			
		0			+12
		3			+5
					19
					+0.8
					3.2

STATE COLLEGE, Pa. Date

DEC 29 1942

Time
0700

Max. 38	Wind F S 2	Barom. t 78	General Obs. = 9 0000 - 0330 0330 - 0400 0400 - 1000 1000 - 2400 ^h
Min. 34	Vis. km. 1/2	p 28.91	
Dry 37	Clouds 10	p(red.) 28.78	
Wet	Ns		
R.H. 98		Morn. <i>ovc drizzle</i>	Foren. <i>ovc rai</i>
Precip. 10.7 mm/0.42 in.		Noon <i>ovc rai</i>	Aftern. <i>ovc heavy rai</i>
Snowfall/-Depth — in/ T in.		Eve. <i>ovc heavy rai</i>	Night <i>ovc heavy rai</i>
	HN	Sp. R. 1755	Sp. 2200

Charlottesville (20) - 47 + 22 71 - 1.4 3.6		
-9	0	11)
-3	1	
4	2	-11
0	2	
-2	3	+8
4	2	
-7	1	-3
4	1	
1	2	19
-8	0	
7	5	-0.3
1		
0		1.7
-5		
0		
1		
1		
0		

STATE COLLEGE, Pa. Date DEC 30 1942

Time

Max. 38	Wind F ENE 1	Barom. t 72	General Obs. ≡ ● 0000 - 0445 ● 0445 - 0530 ● 1310 - 1600 ● X° 1600 - 2400+
Min. 32	Vis. km. 1/2	p 28.34	
Dry 34	Clouds 10	p(red.) 28.23	
Wet	ST		
R.H. 98		Morn. <i>ovc. fog</i>	Foren. <i>ovc rain</i>
Precip. 47.7 mm / 1.88 in.		Noon <i>ovc rain, snow</i>	Aftern. <i>ovc rain snow</i>
Snowfall/-Depth — in / T in.		Eve. <i>ovc snow</i>	Night <i>ovc snow</i>
		HN Sp. SR	122

Casamiciolo

3

(2)

+6

+6

6

+3.0

3.0

STATE COLLEGE, Pa. Date

DEC 31 1942

Time

0700

Max. 36	Wind F NW 5	Barom. t 68	General Obs. \nearrow * ∞
Min. 27	Vis. km. 10	P 28.77	* 0000 - 0650 * 0700 - 1105 * 1950 - 2100
Dry 28	Clouds 10	o (red.) 28.67	
Wet	Sc		
R.H. 80		MORN. <i>ovc now</i>	Foren. <i>ovc oo</i>
Precip. 8.0 mm / 0.32 in		Noon <i>ovc now</i>	Aftern. <i>ovc with breaks</i>
Snowfall / - Depth 0.5 in / 0.5 in		Eve. <i>ovc</i>	Night <i>ovc</i>
	HN		300 ft

THE FOLLOWING LIBRARY IS MISSING IN THE
COLLEGE/M.I. LIBRARY:

Author:

Title:

Year:

Price:

Purchase is desirable: immediately

Please fill out and give either to Miss
Lucille Jackson or H. Landberg. Your

cooperation is appreciated.