

STATE COLLEGE, Pa. Date APR - 1 1942

Time  
0700

Max. 42	Wind F SW 4	Barom. t 68	General Obs. <del>11.5</del> " * 0600 - 0350 0650 - 0800 0830 - 0930
Min. 31	Vis. km. 8	p 28.79	
Dry 34	Clouds 78	p (red.) 28.69	
Wet	St		
R.H. 77		Morn. <i>ov</i>	Foren. <i>cl</i>
Precip. 0.3 mm / 0.0 in.		Noon <i>cl</i>	Aftern. <i>-</i>
Snowfall / -Depth 0.2 in / 11.5 in.		Eve. <i>"</i>	Night <i>-</i>

R

3  
-7  
5  
[R<sub>0</sub> de [3] -12 + 3 15  
-30 50  
-9

STATE COLLEGE, Pa. Date

APR - 2 1942

Time  
0700

Max. 46	Wind F SW 2	Barom. t 70	General Obs. ☒ 5.5"
Min. 33	Vis. km. 15	P 28.85	☉ 0915
Dry 40	Clouds 7	p (red.) 28.74	☉ 1300 in blue sky -1700
Wet	and is flow		
R.H. 66	is fine Ac	Morn. 49 deg	Foren. fair and fine
Precip. T mm / T in.		Noon fair	Aftern. fair cc
Snowfall / -Depth T in / 5.5 in		Eve. h	Night

3  
1  
-9  
-6  
-3  
-5  
-2  
-1  
3  
4  
-9  
-1  
5  
-2  
-6  
-2  
-3  
+1

River View (18)

-49 + 17

-1.8

3.7

-82

STATE COLLEGE, Pa. Date

APR - 3 1942

Time  
0700

Max. 57	Wind F SW 3	Barom. t 73	General Obs. ☒ ● 0745-0755 ● 1530-1900 2130-2400 ① 0800-1000 ② 1330-1415
Min. 39	Vis. km. 10	p 28.75	
Dry 47	Clouds 10	p(red.) 28.63	
Wet	Co. nub Ac, As		
R.H. 73		Morn. <i>over</i>	Foren. <i>clg - pty clg co nub, co pnc</i>
Precip. <i>mm</i> / <i>in.</i>		Noon <i>fair over</i>	Aftern. <i>fair (co nub) to clg</i>
Snowfall / -Depth <i>in</i> / <i>1.5 in.</i>		Eve. <i>clg rain</i>	Night <i>over - rain</i>

R

8  
27  
Pay to Order (4) - 7 + 17 28  
+ 10  
+ 2.5 60

STATE COLLEGE, Pa. Date

APR - 4 1942

Time  
0702

Max. 66	Wind F WNW 2	Barom. t 75	General Obs. ∞ <sup>2</sup> yellowish haze all day long ● 0000 - 0415 ① 1645 - 1715
Min. 47	Vis. km. 5	P 28.83	
Dry 48	Clouds 10	p (red.) 28.71	
Wet	As Sc Fs		
R.H. 85		Morn. <i>ovc</i>	Foren. <i>clt</i>
Precip. 2.8 mm / .11 in.		Noon. <i>clt - ptly clt</i>	Aftern. <i>clt - ptly clt</i>
Snowfall / -Depth in / in.		Eve. <i>ptly clt</i>	Night <i>ci foun, c foun</i> <i>fair</i>

0	-1	-2	-3	-4	-5	-6	-7	-8	-9	-10	-11	-12	-13	-14	-15	-16	-17	-18	-19	-20	-21	-22	-23	-24	-25	-26	-27	-28	-29	-30	-31	-32	-33	-34	-35	-36	-37	-38	-39	-40	-41	-42	-43	-44	-45	-46	-47	-48	-49	-50	-51	-52	-53	-54	-55	-56	-57	-58	-59	-60	-61	-62	-63	-64	-65	-66	-67	-68	-69	-70	-71	-72	-73	-74	-75	-76	-77	-78	-79	-80	-81	-82	-83	-84	-85	-86	-87	-88	-89	-90	-91	-92	-93	-94	-95	-96	-97	-98	-99	-100
1	2	3	4	5	6	7	8	9	10	11	12	13	14	15	16	17	18	19	20	21	22	23	24	25	26	27	28	29	30	31	32	33	34	35	36	37	38	39	40	41	42	43	44	45	46	47	48	49	50	51	52	53	54	55	56	57	58	59	60	61	62	63	64	65	66	67	68	69	70	71	72	73	74	75	76	77	78	79	80	81	82	83	84	85	86	87	88	89	90	91	92	93	94	95	96	97	98	99	100	

Pu Lkoro (142)  
+106  
-166  
+272  
438 +0.7  
3.1



STATE COLLEGE, Pa. Date APR - 5 1942

Time  
0700

Max. 57	Wind F SW 3	Barom. t 74	General Obs. ∞	
Min. 44	Vis. km. 11	p 28.82	0350-0415	TS 0340-0420
Dry 53	Clouds 10	p (red.) 28.70	0530-0615	TS 0520-0620
Wet	Ac			
R.H. 67	As	Morn. over	Foren. dry w/ fine mist	
Precip. 0.2 mm / 0.01 in.		Noon dry	Aftern. dry	
Snowfall / -Depth in / - in.		Eve. dry w/ light drizzle	Night fair	

1  
-1  
-4  
-2  
0  
3  
-9  
5  
-6  
-4  
0  
-6  
-3  
0

Residuals (16) -54 + 6 60  
-48  
-30 38

STATE COLLEGE, Pa. Date APR - 6 1942

Time  
0700

Max. 76	Wind F calm	Barom. t 78	General Obs. ☉ = ☐  ☉ 0630-0840
Min. 47	Vis. km. 6	P 2895	
Dry 51	Clouds 9	p (red.) 2882	
Wet	as neb. ci fer		
R.H. 95		Morn. fair as neb ci fer	Foren. fair - ptly clg
Precip. / mm / in.		Noon ptly clg	Aftern. ptly clg
Snowfall / -Depth / in / in.		Eve. -	Night ptly clg - clg

0  
-3  
-1  
-2  
Prague (4) -6 +0  
-6  
-1.5  
1.5

STATE COLLEGE, Pa. Date APR - 7 1942

Time  
0640

Max. 79	Wind F SW 3	Barom. t 78	General Obs. ∞° • 1505-1510 fine drops • 1945-2215
Min. 51	Vis. km. 12	P 2883	
Dry 60	Clouds 10	p (red.) 28.70	☼
Wet	AS Ac		
R.H. 32		Morn. <i>oc</i>	Foren. <i>oc - clg</i>
Precip. <i>—</i> in.		Noon <i>oc</i>	Aftern. <i>oc - clg</i>
Snowfall/Depth <i>—</i> in.		Eve. <i>oc</i>	Night <i>oc</i>
			R

3  
3  
2  
4

Robson (6) + 16  
+ 16 16  
+ 2.7 2.7

STATE COLLEGE, Pa. Date APR - 8 1942

Time 0700

Max. 72	Wind F N 4	Barom. t 80	General Obs. • 0100-0145 * 2230-2400 ☉ 1130 ☽ 1430-1600
Min. 44	Vis. km. 20	p 29.00	
Dry 44	Clouds 10	b (red.) 28.86	
Wet	Sc		
R.H. 77		Morn. over	Foren. dry
Precip. 3.4 mm / 0.13 in		Noon fair / cc, cs, mist, fog	Aftern. fair / mist, cs
Snowfall / -Depth in / in		Eve. over	Night over *

R

Part an Answer (2) - 2 - 2  
- 2  
- 1.0 1.0



STATE COLLEGE, Pa. Date APR - 9 1942

Time  
0645

Max. 55	Wind F NE 2	Barom. 77	General Obs. <input checked="" type="checkbox"/> 3.1"
Min. 31	Vis. km. 2	p 2907	X <sup>o</sup> 0000-1330 ▲ 1330-1400 ● 1400-2300 ▲ 2300-2400
Dry 31	Clouds 10	p (red.) 28.94	<input checked="" type="checkbox"/> 5.0" / 1100
Wet	Ns		
R.H. 98		Morn. <i>ovc</i>	Foren. <i>ovc</i>
Precip. 12.9 in / 0.51 in		Noon -	Aftern. -
Snowfall / -Depth 3.1 in / 3.1 in		Eve. -	Night -

$\frac{3}{4}$   
Polar (2)  $-4 + 3i$   
-1  
3.5

STATE COLLEGE, Pa. Date APR 10 1942

Time  
0700

Max. 35	Wind F SE 4	Barom. t 68	General Obs. <del>2.8</del> "
Min. 31	Vis. km. 12	p 28.62	•° 0000-0115
Dry 32	Clouds 40	p (red.) 28.52	Δ° 0550-0600
Wet	St		Δ° 0700-1100
R.H. 85		Morn. <i>ov. sleet</i>	Foren. <i>ov</i>
Precip. 17.4 mm / 0.69 in		Noon -	Aftern. -
Snowfall / -Depth 2.4 in / 2.8 in		Eve. -	Night -

R

Prok. math (5) - 11 + 12  
+ 1  
23 : 4.6  
+ 0.2 4.6

$\frac{3}{2}$   
 $\frac{9}{8}$   
- 1

STATE COLLEGE, Pa. Date APR 11 1942

Time  
0700

Max. 36	Wind F WSW 1	Barom. t 68	General Obs. <input checked="" type="checkbox"/> 1.2"
Min. 32	Vis. km. 10	p 28.46	• 0000-0030
Dry 35	Clouds 9	p (red.) 28.36	* 0030-0300
Wet	As Ac Fs		+ 0800-2400
R.H. 75		Morn. <i>clg</i>	Foren. <i>ovc</i>
Precip. 3.0 mm / 0.12 in.		Noon <i>ovc</i>	Aftern. <i>ovc</i>
Snowfall / -Depth T in / 1.2 in.		Eve. <i>clg - pty clg</i> <i>no snow, ci not</i>	Night <i>pty clg - clg</i>

R

1  
-8  
7  
-3  
3  
3  
6  
-1  
-5  
-5  
-4

4.2  
+0.4  
46  
-21 + 25  
+  
Pompeii (11)

STATE COLLEGE, Pa. Date APR 12 1942

Time  
0700

Max. 39	Wind F NW 4	Barom. t 64	General Obs. <input checked="" type="checkbox"/> 0.6"	
Min. 30	Vis. km. 35	p 28.78	*° 0000-0320	
Dry 33	Clouds 4	p (red.) 28.68		
Wet	cu Fc			
R.H. 65		Morn. <i>ptly clg</i>	Foren. <i>clg</i>	
Precip. 1.2 mm / 0.05 in		Noon <i>clg</i>	Aftern. <i>ci not cb inc</i>	
Snowfall / -Depth 0.5 in / 0.6 in		Eve. <i>ptly clg</i>	Night <i>ptly clg to clear</i>	

$\frac{z}{z^2}$   
Parsons (2) - 2+2 4  
0  
00 2.0



STATE COLLEGE, Pa. Date

APR 13 1942

Time  
0700

Max. 43	Wind F WNW 2	Barom. t 60	General Obs. L <sup>o</sup>
Min. 29	Vis. km. 30	P 29.01	
Dry 31	Clouds 0	S (red.) 28.93	
Wet	/		
R.H. 62		Morn. clear	Foren. clear to ptly clg
Precip. / mm / in.		Noon clear to ptly clg	Aftern. clear
Snowfall / -Depth / in / T in.		Eve. clear	Night -

8  
8  
3  
8  
8  
8  
9  
9  
4  
5  
4  
7  
7  
6  
5  
9  
7  
7

Plu. R. R. (19) - 110 + 13 123 - 51 65

STATE COLLEGE, Pa. Date APR 14 1942

Time  
0700

Max. 50	Wind F WSW 1	Barom. t 73	General Obs. <input type="checkbox"/> 00  o 1030-1130
Min. 30	Vis. km. 8	p 29.12	
Dry 32	Clouds 2	p (red.) 29.00	
Wet	ci floe ci vert		
R.H. 75		Morn. fair	Foren. fair/ci flur
Precip. / in / in		Noon L	Aftern. -
Snowfall /-Depth / in / in		Eve. -	Night -

Handwritten notes on lined paper, including the expression  $\frac{p^2 + 4}{p}$  and the value 3.8.

-4  
-5  
-1  
-5

$\frac{p^2 + 4}{p}$

-15 to

15

-3.8

3.8

STATE COLLEGE, Pa. Date APR 15 1942

Time  
0700

Max. 65	Wind F SW 4	Barom. t 74	General Obs. ∞
Min. 32	Vis. km. 12	P 29.06	
Dry 54	Clouds 9	p (red.) 28.94	
Wet	ci flou ci med		
R.H. 70	Ac, As Fc	Morn. cl ci flou med	Foren. cl to pty cl
Precip. / in		Noon cl	Aftern. cl - pty cl
Snowfall / -Depth in		Eve. pty cl	Night clear

			0
			-2
			4
			0
			-1
			6
			0
		-1	-2
		2	-9
		2	8
		3	-3
		1	-3
		-1	1
		-1	0
		2	6
		-6	5
		-1	3
		0	3
		6	+8
		-5	+7
1	3.1	105	+0.8
		99	+66
		(34)	-39
			0x for

STATE COLLEGE, Pa. Date APR 16 1942

Time 0700

Max. 72	Wind F SW 4	Barom. t 78	General Obs. 2° 00°	
Min. 51	Vis. km. 15	P 29.14		
Dry 62	Clouds 2	p(red.) 29.01		
Wet	Ac			
R.H. 60		Morn. <i>ptly clgy</i>	Foren. <i>ptly clgy</i>	
Precip. / mm / in.		Noon <i>clgy</i>	Aftern. <i>clgy - ptly clgy</i>	
Snowfall / in. / -Depth in. / in.		Eve. <i>ptly clgy</i>	Night <i>fair</i>	

3  
2  
3  
4  
6  
7  
7

Page (7) - 23 + 9 32

- 2.0 4.6

- 14



STATE COLLEGE, Pa. Date APR 17 1942

Time  
0700

Max. 80	Wind F S 1	Barom. t 80	General Obs. ∞ • 1055-1105 } fine drops. 1155-1200 }
Min. 47	Vis. km. 12	p 29.00	
Dry 51	Clouds 4	p(red.) 28.86	
Wet	Ac		
R.H. 90		Morn. <i>ptly clg</i>	Foren. <i>ptly clg</i>
Precip. / mm / in.		Noon <i>clg to sun</i>	Aftern. <i>clg to ptly clg</i>
Snowfall / in / -Depth in.		Eve. <i>ptly clg</i>	Night <i>ptly clg</i>



STATE COLLEGE, Pa. Date APR 18 1942

Time  
0700

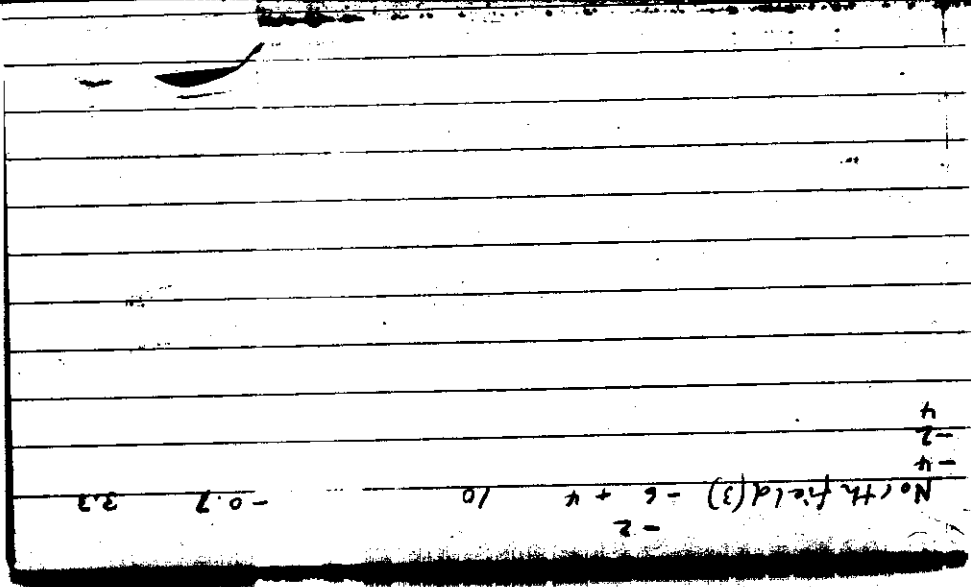
Max. 73	Wind F NW 3	Barom. t 75	General Obs.	
Min. 38	Vis. km. 50	P 28.84		
Dry 40	Clouds 4	p(red.) 28.72		
Wet	Sc			
R.H. 66		Morn. <i>ptly clg</i>	Foren. <i>ptly clg to clg</i>	
Precip. / in / T in		Noon <i>clg - over</i>	Aftern. <i>over - clg</i>	
Snowfall / -Depth in / in		Eve. <i>over</i>	Night <i>over</i>	

		8
		4
		7
		1
		5
		5
		0
		1
		1
		1
		1
		1
		5
		4
		4
		4
		1
		3
		4
		2
		2
		8
		0
		3
		0
	0.2	0.2
	29	(29)
	-55 + 32	
	87	
	-0.8	
	3.0	

STATE COLLEGE, Pa. Date APR 19 1942

Time  
0700

Max. 45	Wind F NW 1	Barom. t 75	General Obs.
Min. 37	Vis. km. 20	P 28.88	
Dry 37	Clouds 10	p(red.) 28.76	
Wet	Sc		
R.H. 75		Morn. <i>ovc</i>	Foren. <i>ovc</i>
Precip. / mm / in.		Noon -	Aftern. -
Snowfall / -Depth / in / in.		Eve. -	Night /



4

-2

-4

2

No. 14 field (3)

-2

10

+4

-6

-0.7

3.2

STATE COLLEGE, Pa. Date APR 20 1942

Time  
0700

Max. 45	Wind F NW 2	Barom. t 73	General Obs. 10° 0120-0640 9° 0705-0900	
Min. 37	Vis. km. 20	P 28.89		
Dry 38	Clouds 10	p (red.) 28.77		
Wet	Sc			
R.H. 85		Morn. <i>ovc</i>	Foren. <i>ovc</i>	
Precip. / mm / T in		Noon <i>clg</i>	Aftern. <i>clg to ovc</i>	
Snowfall / - Depth in / - in		Evs. <i>ovc</i>	Night <i>ovc - clg</i>	

8	5	8	9			
7	1	5	7			
6	3	4	4			
5	7	7	7			
4	8	0	3			
3	9	4	5			
2	7	5	4			
1	5	5	3			
0	8	7	4			
-1	6	7	5			
-2	5	0	4			
-3	4	9	3			
-4	3	8	4			
-5	2	7	5			
-6	1	6	4			
-7	0	5	3			
-8	9	4	2			
-9	8	3	1			
-10	7	2	0			
-11	6	1	-1			
-12	5	0	-2			
-13	4	9	-3			
-14	3	8	-4			
-15	2	7	-5			
-16	1	6	-6			
-17	0	5	-7			
-18	9	4	-8			
-19	8	3	-9			
-20	7	2	-10			
-21	6	1	-11			
-22	5	0	-12			
-23	4	9	-13			
-24	3	8	-14			
-25	2	7	-15			
-26	1	6	-16			
-27	0	5	-17			
-28	9	4	-18			
-29	8	3	-19			
-30	7	2	-20			
-31	6	1	-21			
-32	5	0	-22			
-33	4	9	-23			
-34	3	8	-24			
-35	2	7	-25			
-36	1	6	-26			
-37	0	5	-27			
-38	9	4	-28			
-39	8	3	-29			
-40	7	2	-30			
-41	6	1	-31			
-42	5	0	-32			
-43	4	9	-33			
-44	3	8	-34			
-45	2	7	-35			
-46	1	6	-36			
-47	0	5	-37			
-48	9	4	-38			
-49	8	3	-39			
-50	7	2	-40			
-51	6	1	-41			
-52	5	0	-42			
-53	4	9	-43			
-54	3	8	-44			
-55	2	7	-45			
-56	1	6	-46			
-57	0	5	-47			
-58	9	4	-48			
-59	8	3	-49			
-60	7	2	-50			
-61	6	1	-51			
-62	5	0	-52			
-63	4	9	-53			
-64	3	8	-54			
-65	2	7	-55			
-66	1	6	-56			
-67	0	5	-57			
-68	9	4	-58			
-69	8	3	-59			
-70	7	2	-60			
-71	6	1	-61			
-72	5	0	-62			
-73	4	9	-63			
-74	3	8	-64			
-75	2	7	-65			
-76	1	6	-66			
-77	0	5	-67			
-78	9	4	-68			
-79	8	3	-69			
-80	7	2	-70			
-81	6	1	-71			
-82	5	0	-72			
-83	4	9	-73			
-84	3	8	-74			
-85	2	7	-75			
-86	1	6	-76			
-87	0	5	-77			
-88	9	4	-78			
-89	8	3	-79			
-90	7	2	-80			
-91	6	1	-81			
-92	5	0	-82			
-93	4	9	-83			
-94	3	8	-84			
-95	2	7	-85			
-96	1	6	-86			
-97	0	5	-87			
-98	9	4	-88			
-99	8	3	-89			
-100	7	2	-90			

47  
 299 + 3.0  
 -55 + 244  
 (3)



STATE COLLEGE, Pa. Date

APR 21 1942

Time

0700

Max. 51	Wind F N 3	Barom. t 75	General Obs.
Min. 37	Vis. km. 25	P 28.90	
Dry 44	Clouds 7	p(red.) 28.78	
Wet	Ac Ac least		
R.H. 69	cu	Morn. <i>cl</i>	Foren. <i>cl</i>
Precip. / <i>mm</i> / T in.		Noon -	Aftern. -
Snowfall / -Depth in / in.		Eve. -	Night - <i>to 1/4 cl</i>



STATE COLLEGE, Pa. Date APR 22 1942

Time 0700

Max. 57	Wind F W 2	Barom. t 77	General Obs. <i>a</i> 1030-1115 (a) a fine.
Min. 37	Vis. km. 18	P 29.03	1510 (a); 1515 <i>So</i> / 1530 (40.1° s.e.) / (30:37.7°)
Dry 45	Clouds 0	p (red.) 28.90	1538 (a); 1620 6:0 1700 0.0 - 1720.
Wet			
R.H. 76		Morn. clear	Foren. clear to fair
Precip. / mm / in.		Noon fair a fine fair	Aftern. fair a fine a fine
Snowfall / -Depth in / in.		Eve. fair	Night fair

R

3  
-1  
3  
6  
-0  
4  
-4  
-7  
-1  
-2  
-3  
-3  
-1  
-6  
0  
-3  
-3  
-4  
-4  
-3

Handwritten notes:  
-55  
63  
-29 88

STATE COLLEGE, Pa. Date APR 23 1942

Time  
0700

Max. 71	Wind F <i>calm</i>	Barom. t 79	General Obs. 0 3	
Min. 41	Vis. km. 20	P 29.10		
Dry 48	Clouds 0	b (red.) 28.97		
Wet	/			
R.H. 68		Morn. <i>clear</i>	Foren. <i>clear</i>	
Precip.		Noon -	Aftern. -	
<del>mm/</del>	<del>in.</del>			
Snowfall/	Depth	Eve. -	Night -	
<del>in.</del>	<del>in.</del>			

N

4  
6  
Nemo (2) - 6 + 4  
2  
- 10 5.0

STATE COLLEGE, Pa. Date APR 24 1942

Time  
0700

Max. 75	Wind F calm	Barom. t 78	General Obs. 0 layers aloft	
Min. 45	Vis. km. 25	P 29.11		
Dry 51	Clouds 0	p (red.) 28.98		
Wet	/			
R.H. 65		Morn. clear	Foren. clear	
Precip. mm/ in.		Noon -	Aftern. -	
Snowfall/ -Depth in/ in.		Eve. -	Night -	

0.9 0.9+

<sup>6</sup>Niigata (1)



STATE COLLEGE, Pa. Date APR 25 1942

Time 0700

Max. 82	Wind F W 1	Barom. t 74	General Obs.
Min. 50	Vis. km. 20	P 28.98	
Dry 56	Clouds < 1	p (red.) 28.86	
Wet	cu Fc		
R.H. 52		Morn. fair	Foren. fair
Precip. / mm / in.		Noon fair in flow, part	Aftern. pty clg - dr Ac
Snowfall / -Depth in / in.		Eve. pty clg	Night clear

	0	1
	3	4-
	0	0
	5-	8-
	0	7-
	9	8-
	6	6
	4	7-
	5-	1
	8	1-
	9	7
	3-	3-
	5-	4
	8-	0
	1-	5
	7	3
	5-	1-
	1	1-
	3	2
	8-	8
	0	2-
	3	8

$40$   
 $80$   
 $502$   
 $88 + 271 - (52) - 122 + 83 = 205$   
 $18$



STATE COLLEGE, Pa. Date

APR 26 1942

Time

0700

Max. 85	Wind F calm	Barom. t 81	General Obs. ∞
Min. 54	Vis. km. 15	P 28.98	
Dry 57	Clouds 0	p (red.) 28.84	
Wet	/		
R.H. 70		Morn. clear	Foren. clear
Precip. / mm / in.		Noon "	Aftern. ptly clg - drg
Snowfall / - Depth / in / - in.		Eve. ptly clg	Night cu cong ptly clg



STATE COLLEGE, Pa. Date APR 27 1942

Time  
0700

Max. 85	Wind F E 2	Barom. t 84	General Obs. ② 0600-0745
Min. 53	Vis. km. 25	P 29.04	• 1340-1400
Dry 55	Clouds 8	p (red.) 28.89	
Wet	as well a few cc		
R.H. 49		Morn. fair	Foren. pty cl7
Precip. mm / in.		Noon cl7	Aftern. cl7 - over
Snowfall / -Depth in / in.		Eve. pty cl7	Night fair
			R

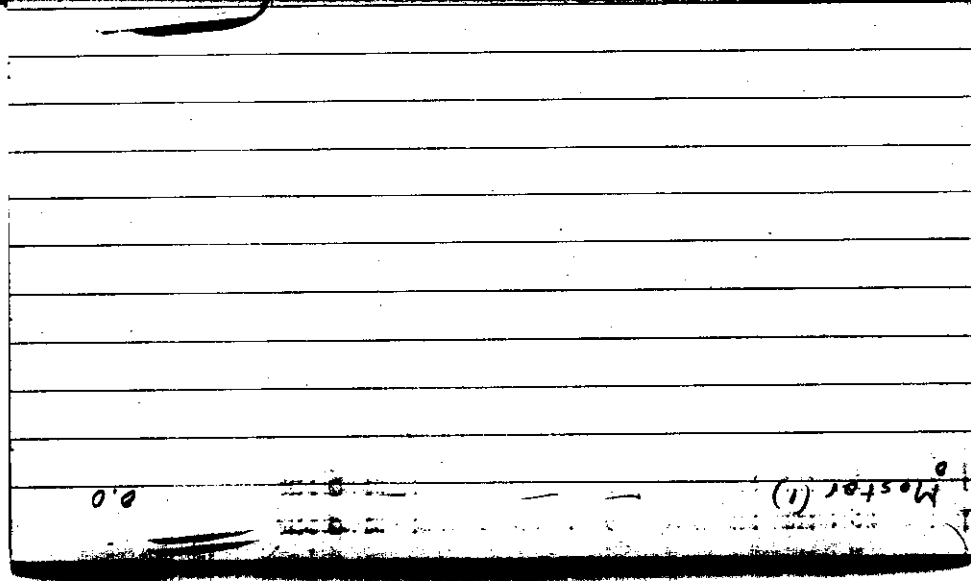
+2  
Noyles (6) -13 + 15 28  
+0.3 4.7

9  
1/2  
3  
-  
8  
-  
5

STATE COLLEGE, Pa. Date APR 28 1942

Time  
0700

Max. 69	Wind F S 3	Barom. t 74	General Obs. ∞	
Min. 50	Vis. km. 20	P 29.02	0600 - 0700	
Dry 52	Clouds 5	p(red.) 28.90		
Wet	as fume			
R.H. 60	as flow	Morn. part haze	Foren. part dry	
Precip. mm / T in		Noon part dry	Aftern. - as seen as flow as well	
Snowfall / -Depth in / in		Eve. dry as is	Night dry - over	



Master (1)

0.0



STATE COLLEGE, Pa. Date APR 29 1942

Time  
0700

Max. 72	Wind F calm	Barom. t 76	General Obs. ∞ ● 0030 - 0130
Min. 52	Vis. km. 12	p 29.01	
Dry 58	Clouds 5	p(red.) 28.89	
Wet	sc	<del>28</del>	
R.H. 73		Morn. <i>ptly clgy haze</i>	Foren. <i>ptly clgy - fair</i>
Precip. mm/ T in.		Noon <i>fair</i>	Aftern. <i>fair</i>
Snowfall/ -Depth in/ in.		Eve. ~	Night ~

B

Handwritten notes on lined paper, including the word "Monday" and the number "25".

Monday (2) 25

14

STATE COLLEGE, Pa. Date **APR 30 1942**

Time  
0700

Max. 84	Wind F calm	Barom. t 80	General Obs. =	
Min. 57	Vis. km. 8	p 29.04		
Dry 66	Clouds 5	p (red.) 28.90		
Wet	is. neb is. fog is. fine			
R.H. 60	is. fine	Morn. fair	Foren. fair	
Precip. / mm / in		Noon -	Aftern. -	
Snowfall / -Depth / in / in		Eve. -	Night -	

N

1  
2

M... (7) - 3 + 28 37 + 0.4 4.4  
+ 3