

STATE COLLEGE, Pa. Date

MAY 1 1941

Time

1910

Max. 74.6	Wind F NNW 2	Barom. t	General Obs.	
Min. 55.5	Vis. km. 12	p		
Dry 68.7	Clouds 8	b (red.)		
Wet	cc 5 sc 3			
R.H. 39		Morn.	Foren.	
Precip. T mm/ in.		Noon	Aftern.	
Snowfall/-Depth in/ in.		Eve.	Night	

+6  
Tortosa (5) -1 +7 8 +1.2 1.6

4  
1  
0  
2

STATE COLLEGE, Pa. Date **MAY 2 1941**

Time  
6:50

Max. 74.6	Wind F N 3	Barom. t 72.0	General Obs.	
Min. 52.4	Vis. km. 12	P 28.77		
Dry 53.0	Clouds 5 ci fil	p (red.) 28.66		
Wet				
R.H. 75		Morn. <i>partly cloudy</i>	Foren. <i>clear</i>	
Precip. T in/ in.		Noon " "	Aftern. <i>fair</i>	
Snowfall, -Depth in/ in.		Eve. <i>fair to clear</i>	Night <i>clear</i>	

-Dokya Dura (2) -14 + 0 14 -7.0 7.0

STATE COLLEGE, Pa. Date **MAY 2 1941**

Time  
**1900**

Max. <b>66.2</b>	Wind F <b>NE 6</b>	Barom. t	General Obs.
Min.	Vis. km. <b>35</b>	p	
Dry <b>50.4</b>	Clouds <b>1</b>	p (red.)	
Wet	<b>ci fil</b>		
R.H. <b>26</b>	<b>ac</b>	Morn.	Poren.
Precip. mm/ in.		Noon	Aftern.
Snowfall/Depth in/ in.		Eve.	Night

+11  
+11 11 +1.8 1.8  
3  
4  
4

STATE COLLEGE, Pa. Date **MAY 3 1941**

Time  
6:50

Max. 66.2	Wind F NE 2	Barom. t 71.0	General Obs. 0630 L <sup>o</sup> (heavy downcom) 15-16 6 ci fum
Min. 32.9	Vis. km. 30	P 29.04	
Dry 37.2	Clouds 0	p (red.) 28.95	
Wet			
R.H. 70		Foren. clear	Foren. clear
Precip. - mm/ in.		Noon "	Aftern. "
Snowfall/-Depth in/ in.		Eve. "	Night "

Handwritten notes on lined paper, including the word "Dunkin'" and some numbers.

1

0

2

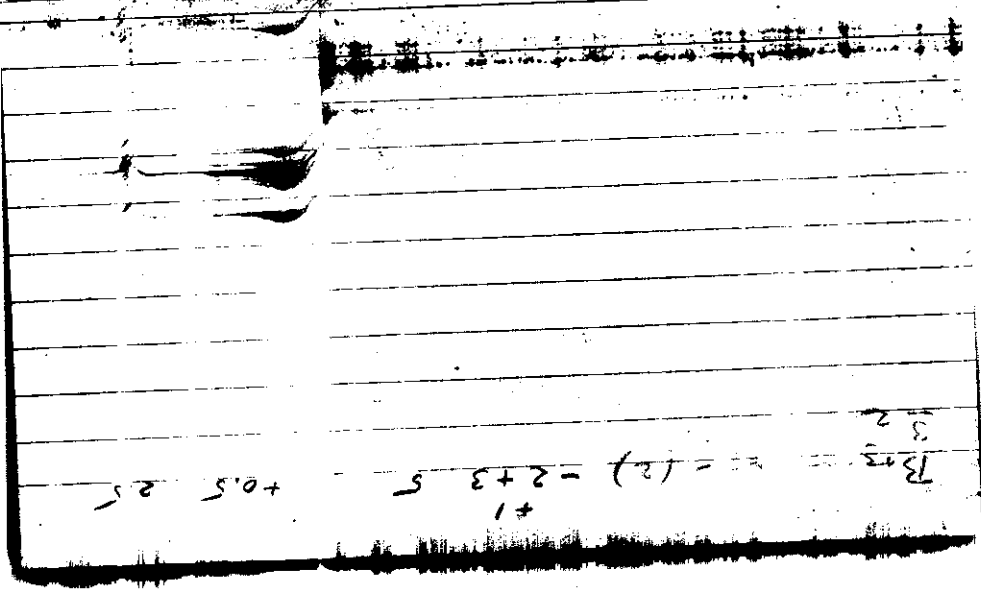
Dunkin' (B) +3 - +3 3 +1.0 1.0



STATE COLLEGE, Pa. Date **MAY 4 1941**

Time  
6:52

Max. 63.0	Wind F calm	Barom. 70.2	General Obs. 7 <sup>00</sup> a (6-7 <sup>h</sup> W' downtown) (1200-17 <sup>00</sup> )
Min. 36.1	Vis. Km. 20	28.92	
Dry 41.9	Clouds 0	(red.) 28.81	
Wet			
R.H. 65		Morn. clear to fair	Foren. fair
Precip.		Noon fair	Aftern. "
Snowfall/Depth in/ in		Even "	Night "



$$\frac{3}{2}$$

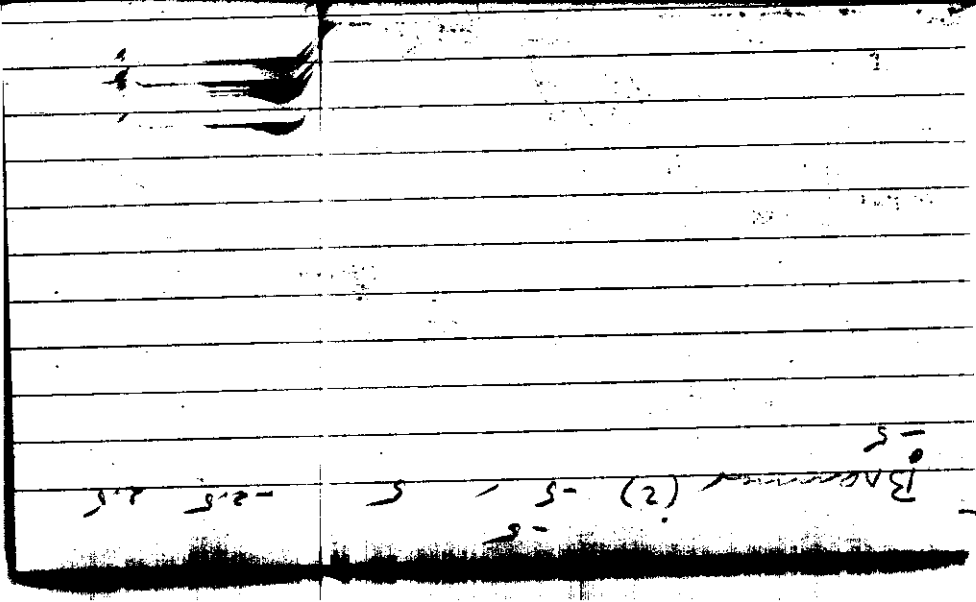
$$Bos = (2) - 2 + 3 \quad 5$$

$$+1 +0.5 \quad 2.5$$

STATE COLLEGE, Pa. Date **MAY 5 1941**

Time  
6:55

Max. 74.9	Wind F SSW 2	Barom. t 74	General Obs. ☉ in 16 <sup>00</sup> -16 <sup>02</sup>
Min. 41.0	Vis. km. 12	28.74	
Dry 56.2	Clouds cc co as ac	28.62	
Wet			
R.H. 41		Foren. fair to pthy cloudy	Foren. partly cloudy
Precip. in/	in	noon partly cloudy to cloudy	aftern. cloudy to overcast (rain)
Snowfall, -Depth in/	in	eva. cloudy to pthy cloudy	Night partly cloudy



-S -S -S

Barnard (2)  $\circ$  -S

STATE COLLEGE, Pa. Date **MAY 5 1941**

Time  
1900

Max. 83.1	Wind F WNN 2	Barom. t	General Obs.
Min. 56.2	Vis. km. 12	p	
Dry 72.0	Clouds 9+	b (red.)	
Wet	ac ac		
R.H. 54		Morn.	Foren.
Precip. T cm/ in.		Noon	Aftern.
Snowfall/-Depth in/ in.		Eve.	Night

+5

Time	35	-30	+35	65	+0.1	1.9
-3	-2					
-5	3					
0	0					
-1	2					
+3	1					
-2	6					
+4	1					
+1	0					
0	0					
3	-2					
-1	-2					
+2	4					
+4	2					
-3	-1					
-2	-1					
-1						
+1						
+1						
+1						
0						

STATE COLLEGE, Pa. Date **MAY 6 1941**

Time  
0650

Max. 83.1	Wind F ESE 2	Barom. 76.0	General Obs.	
Min. 53.6	Vis. km. 6	28.85	7° 8° -10	
Dry 55.9	Clouds ci fil	28.73		
Wet				
R.H. 94		Foren. <i>fair (w. neb)</i>	Foren. <i>fair to partly cloudy</i>	
Precip. T in/ in		Noon <i>partly cldy to cloudy</i>	Aftern. <i>cloudy</i>	
Snowfall, -Depth in/ in		Eve. <i>cloudy to pthly cloudy</i>	Night <i>partly cloudy</i>	

9  
7  
2  
2  
2  
4  
-1  
8  
3  
2  
3  
0  
5  
3

Bank deposit (15) -10 + 33 43 + 15 2.9



STATE COLLEGE, Pa. Date **MAY 7 1941**

Time  
6:41

Max. 84.2	Wind F S 2	Barom. t 80.0	General Obs. 7 <sup>00</sup> 0   00°
Min. 55.9	Vis. km. 12	28.66	8 <sup>00</sup> 0-9 <sup>00</sup> 23 <sup>40</sup> -24 <sup>00</sup>
Dry 65.3	Clouds 5	pt (red.) 28.53	10 <sup>45</sup> -12 <sup>45</sup> 0
Wet	ac as cs cc		8 <sup>18</sup> 18 <sup>05</sup> -18 <sup>43</sup> 0 d. 18 <sup>43</sup> -18 <sup>50</sup> ) 0 <sup>19</sup> 19 <sup>30</sup> -20 <sup>00</sup> 0 <sup>20</sup> 20 <sup>40</sup> -22 <sup>15</sup>
R.H. 75		Morn. fair	Foren. partly cloudy (cs from cs net, cs den
Precip. in/ in		Noon cloudy	Aftern. overcast with breaks, overcast
Snowfall, -Depth in/ in		Eve. overcast, showers	Night overcast, showers

1050  
11  
Bmff. (6) - 7 + 5 12  
= 0.3 2.0

STATE COLLEGE, Pa. Date MAY 7 1941

Time  
1900

Max. 80.1	Wind F SW 2	Barom. t	General Obs.	
Min. 61.8	Vis. km. 7	p		
Dry 63.2	Clouds 10	p (red.)		
Wet	sc as ps			
R.H. 99		Morn.	Foren.	
Precip. 5.2 mm/ in.		Noon	Aftern.	
Snowfall/-Depth in/ in.		Eve.	Night	

-	Tank	23	-70 + 5	75	-3.0 3.3
-1	-9				
-1	1				
-2	2				
-4					
-3					
-7					
-6					
-2					
-3					
-9					
-2					
+2					
0					
-1					
-4					
-3					
-3					
-4					
-6					

STATE COLLEGE, Pa. Date

MAY 8 1941

Time  
0650

Max. 80.1	Wind F W 2	Barom. t 77.6	General Obs. 0° 00' - 0140
Min. 52.3	Vis. km. 15	28.63	16:55 0° - 17:25
Dry 56.4	Clouds 8	28.50	17:25 0° - 1830
Wet	ci fil ci flocc		
R.H. 76	uc 6	Morn. cloudy	Foren. partly cloudy
Precip. 9.8 mm / 0.39 in.		Noon "	Aftern. showers cloudy to overcast
Snowfall, -Depth in/ in.		Eve. overcast to cloudy	Night partly cloudy rain to cloudy, later overcast

5-  
5-  
2-  
4-  
1-  
2-

Collected (7) - 9 + 16 25  
+ 10 36

STATE COLLEGE, Pa. Date **MAY 8 1941**

Time  
**1905**

Max. <b>71.4</b>	Wind F <b>SW 2</b>	Barom. t	General Obs.	
Min.	Vis. km. <b>25</b>	p		
Dry <b>53.7</b>	Clouds <b>8</b>	p (red.)		
Wet	ac ac ac co			
R.H. <b>90</b>		Morn.	Foren.	
Precip. <b>1.2</b> mm/ in.		Noon	Aftern.	
Snowfall/-Depth in/ in.		Eve.	Night	

$-6$   
- 10 + 4 14     - 0.7     1.6  
- 1  
- 2  
- 3  
- 3

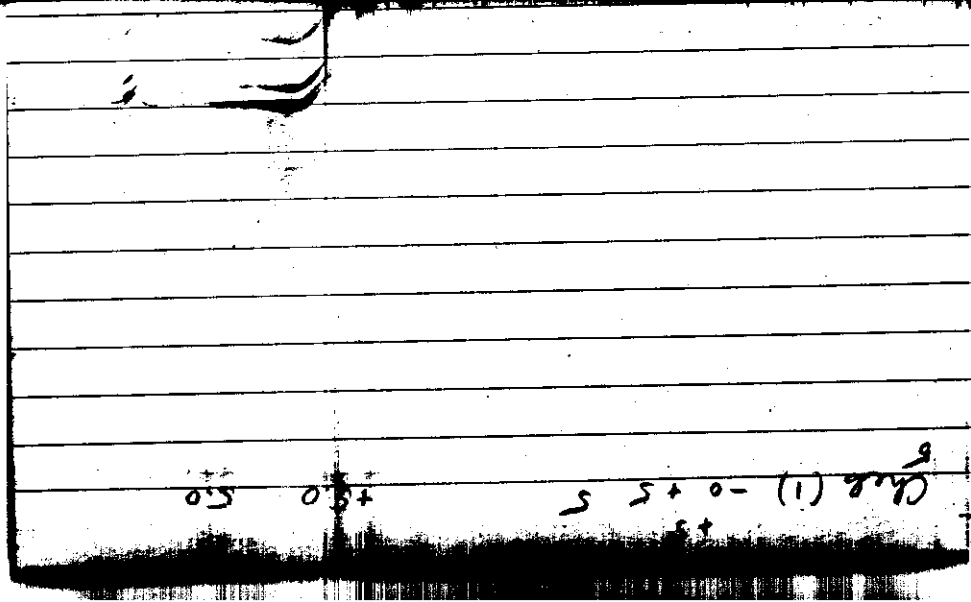


STATE COLLEGE, Pa. Date

MAY 9 1941

Time  
6:40

Max. 70.9	Wind F SW 2	Barom. t 71.0	General Obs. ☉° 5:40-15:00 ☽° " " " 19:15 ● dr	
Min. 43.1	Vis. km. 1.5	28.54		
Dry 46.2	Clouds 10	28.43		
Wet	ns			
R.H. 97		Morn. overcast, rain	Foren. overcast, rain	
Precip. 1.9 mm / 0.07 in.		Noon " "	Aftern. " "	
Snowfall, -Depth in/ in.		Eve. " , gusty, raindrops	Night " "	



6  
Ch. 8 (1) - 0 + 5 5  
+ 5 0 + 5

STATE COLLEGE, Pa. Date MAY 9 1941

Time  
1920

Max. 54.8	Wind F NW 5	Barom. t	General Obs.	
Min.	Vis. km. 25	p		
Dry 50.9	Clouds 10	p (red.)		
Wet	ft. cu SC NS			
R.H. 84		Morn.	Foren.	
Precip. 5.5 mm/ in.		Noon	Aftern.	
Snowfall/-Depth in/ in.		Eve.	Night	

Toronto (4) <sup>6</sup> -9 +3 12 -1.5 3.0  
-5  
2  
-4

STATE COLLEGE, Pa. Date

MAY 10 1941

Time  
0640

Max. 54.6	Wind F NNW 3	Barom. t 70.0	General Obs.
Min. 43.0	Vis. km. 10	28.84	
Dry 43.2	Clouds 10	p (red.) 28.73	
Wet	St Sc		
R.H. 90		Morn. overcast to <sup>overcast</sup> with haze	Foren. overcast with break to cloudy
Precip. 5.8 mm / 0.23 in		Noon partly cloudy to cloudy	Aftern. cloudy to fair
Snowfall / -Depth in / in		Eve. fair to clear	Night clear



STATE COLLEGE, Pa. Date **MAY 10 1941**

Time  
**19:00**

Max. <b>60.0</b>	Wind F <b>NNW 4</b>	Barom. <b>t</b>	General Obs.
Min.	Vis. km. <b>40</b>	p	
Dry <b>54.8</b>	Clouds <b>&lt; 1</b>	p (red.)	
Wet	<b>ac</b>		
R.H. <b>25</b>		Morn.	Foren.
Precip. <b>mm/ in.</b>		Noon	Aftern.
Snowfall/ -Depth <b>in/ in.</b>		Eve.	Night

- June (2) <sup>+2</sup> +3 3 +1.5 1.5  
3  
0



STATE COLLEGE, Pa. Date **MAY 1 1941**

Time  
6:45

Max. 59.5	Wind F. W 2	Barom. t 67.0	General Obs. 6:42 # 6:00 W'
Min. 35.6	Vis. km. 25	28.79	
Dry 37.4	Clouds 4	28.69	
Wet	ci unc ci pl ci floe		
R.H. 73		Morn fair	Foren fair
Precep. — in/ in.		Noon "	Aftern. " to partly cloudy
Snowfall/Depth in/ in.		Eve. "	Night fair

Chicago (2) - 0 + 3 2  
+ 5

STATE COLLEGE, Pa. Date **MAY 12 1941**

Time  
**6:40**

Max. <b>62.6</b>	Wind F <b>WSW 2</b>	Barom. t <b>69.0</b>	General Obs. <b>6°° L°</b>
Min. <b>34.6</b>	Vis. km. <b>1</b>	<b>28.57</b>	
Dry <b>38.8</b>	Clouds <b>ci flou</b>	b (red.) <b>28.47</b>	
Wet			
R.H. <b>65</b>		Foren. <b>fair</b>	Foren. <b>fair to partly cloudy</b>
Precip. mm/ in		Noon <b>partly cloudy to cloudy</b>	Aftern. <b>cloudy</b>
Snowfall, -Depth in/ in		Eve. <b>cloudy to fair</b>	Night <b>fair to clear</b>

14

6  
1  
2  
3  
4  
5  
6  
7  
8  
9  
10  
11  
12  
13  
14  
15  
16  
17  
18  
19  
20  
21  
22  
23  
24  
25  
26  
27  
28  
29  
30  
31  
32  
33  
34  
35  
36  
37  
38  
39  
40  
41  
42  
43  
44  
45  
46  
47  
48  
49  
50  
51  
52  
53  
54  
55  
56  
57  
58  
59  
60  
61  
62  
63  
64  
65  
66  
67  
68  
69  
70  
71  
72  
73  
74  
75  
76  
77  
78  
79  
80  
81  
82  
83  
84  
85  
86  
87  
88  
89  
90  
91  
92  
93  
94  
95  
96  
97  
98  
99  
100

101  
102  
103  
104  
105  
106  
107  
108  
109  
110  
111  
112  
113  
114  
115  
116  
117  
118  
119  
120  
121  
122  
123  
124  
125  
126  
127  
128  
129  
130  
131  
132  
133  
134  
135  
136  
137  
138  
139  
140  
141  
142  
143  
144  
145  
146  
147  
148  
149  
150  
151  
152  
153  
154  
155  
156  
157  
158  
159  
160  
161  
162  
163  
164  
165  
166  
167  
168  
169  
170  
171  
172  
173  
174  
175  
176  
177  
178  
179  
180  
181  
182  
183  
184  
185  
186  
187  
188  
189  
190  
191  
192  
193  
194  
195  
196  
197  
198  
199  
200

STATE COLLEGE, Pa. Date **MAY 13 1949**

Time  
6:45

Max. 59.7	Wind F	Barom. t 74.2	General Obs. 6:30 L <sup>1-2</sup>
Min. 33.5	Vis. Km.	28.80	
Dry 40.1	Clouds	(red.) 28.68	
Wet			
R.H. 68		Foren. <i>fair</i>	Foren. <i>fair to partly cloudy</i>
Precip.		Noon <i>partly cloudy</i>	Aftern. <i>partly cloudy to cloudy</i>
Snowfall, - Depth		Eve. <i>partly cloudy to fair</i>	Night <i>fair to clear</i>



STATE COLLEGE, Pa. Date **MAY 14 1941**

Time  
6:45

Max. 64.7	Wind F calm	Barom. t 76.0	General Obs. 6:30 co K a <sup>2</sup> (L <sup>2</sup> down turn)
Min. 39.2	Vis. km. P	28.91	
Dry 44.6	Clouds 0	o (red.) 28.79	
Wet			
R.H. 79		MOON. clear	MOON. fair
Precip. mm/ in.		Noon fair	Aftern. partly cloudy
Snowfall in/ in.	Depth in.	Svs. cloudy	Night " "

Handwritten notes on lined paper, including the expression  $(4) - 3 + 11 + 14$  and the numbers 2, 3, 7, 7.



STATE COLLEGE, Pa. Date MAY 14 1941

Time  
1900

Max. 74.1	Wind F W 2	Barom. t	General Obs.
Min. 44.6	Vis. km. 25	p	
Dry 65.1	Clouds 9	b (red.)	
Wet	cc cc		
R.H. 22		Morn.	Foren.
Precip. mm/ in.		Noon	Aftern.
Snowfall/ -Depth in/ in.		Eve.	Night

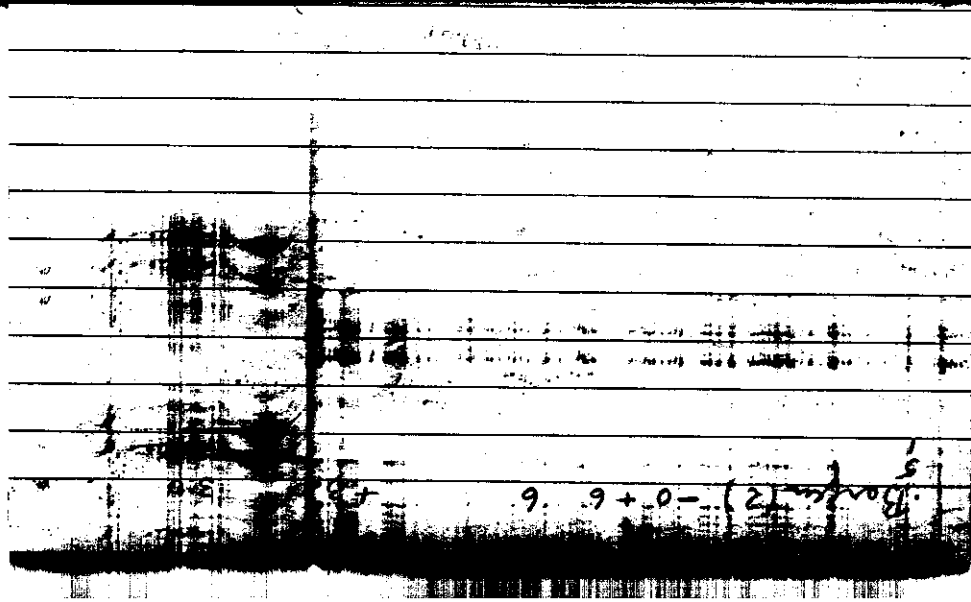
-32

Titizim = 7 -34 + 2 36 -4.6 5.1  
-6  
-5  
-4  
-3  
-2  
-8

STATE COLLEGE, Pa. Date **MAY 15 1941**

Time  
0650

Max. 74.1	Wind F S 2	Barom. t 78.0	General Obs. 645° 842 ● drops - 10:03
Min. 44.6	Vis. Km. 9	28.95	☉ 10:03-10:55
Dry 51.8	Clouds 10	(red.) 28.82	☉ 16:15-16:20; 17:02-17:08
Wet	as trans asc		☉ 22:45-23:00 2350-000
R.H. 64		Foren. cloudy to overcast	Foren. overcast, light rain
Precip. / mm/ in.		Noon overcast, light rain	Aftern. " , showers
Snowfall, - Depth in/ in.		Eve. " , showers	Night " (clouds)

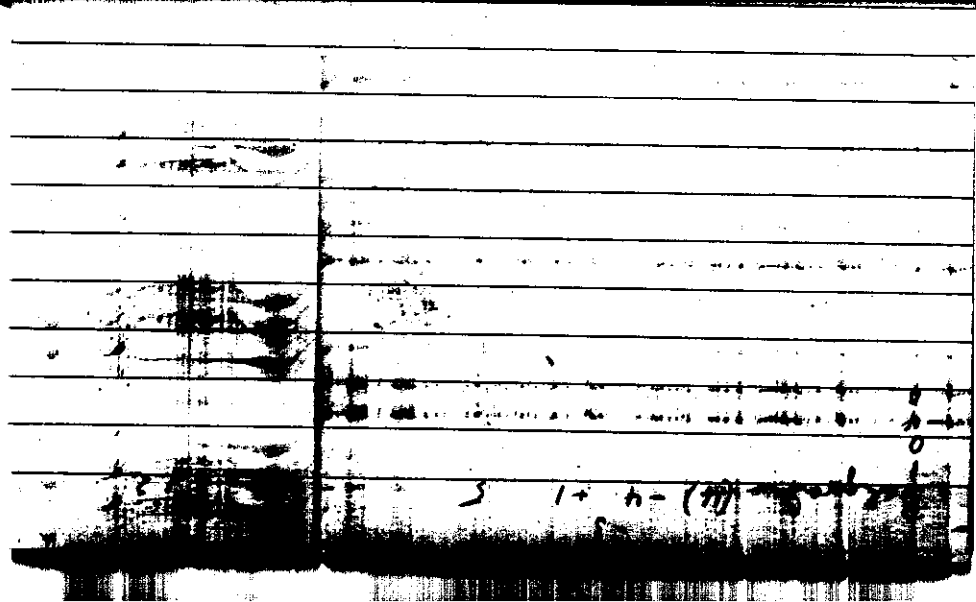


9. 9 + 0 - (2) 5

STATE COLLEGE, Pa. Date MAY 16 1941

Time  
6:45

Max.	Wind F	Barom.	General Obs.
60.2	SW 2	t 78	7 <sup>h</sup> ≡ 9° T <sub>R</sub> 0:00-0:25
Min.	Vis. km.	P	☉ <sup>00</sup> 0:02-1:30
50.0	2	28.60	☉ <sup>00</sup> 9:37-9:48
Dry	Clouds	o (red.)	↙ 20-22; NW
55.1	10	28.47	
Wet	st ns		
R.H.	96	MOON.	Foren.
		overcast, foggy, drizzle	overcast to cloudy
Precip.	5.6 mm / 0.26 in	Noon	Aftern.
		cloudy	cloudy to partly cloudy
Snowfall, - Depth		Sve.	Night
in/ in		"	" to overcast



3 1+ h- (77) - 5-1-2

Max. 79.6	Wind F W 4	Barom. 76.0	General Obs. 74° / 10:30
Min. 55.1	Vis. km. 12	28.53	7 10:30-10:40 6:20-6:35
Dry 63.8	Clouds 10	28.41	11:40-11:58
Wet	p. dr sc		
R.H. 89		Morn. overcast, rain	Foren. overcast, showers, drizzle
Precip. 0.6 in / 0.02 in		Noon "	Aftern. cloudy
Snowfall / - Depth in / in		Eve. cloudy	Night " to pty cloudy

	1
	2
	2
	-1
	-1
	3
	3
	3
	0
	1
	3
	2
	3
	4
	-2
	1
	-4
4.8	9.6
4.5	8.7
	6
	4.8
	5.7



STATE COLLEGE, Pa. Date **MAY 18 1941**

Time  
6:48

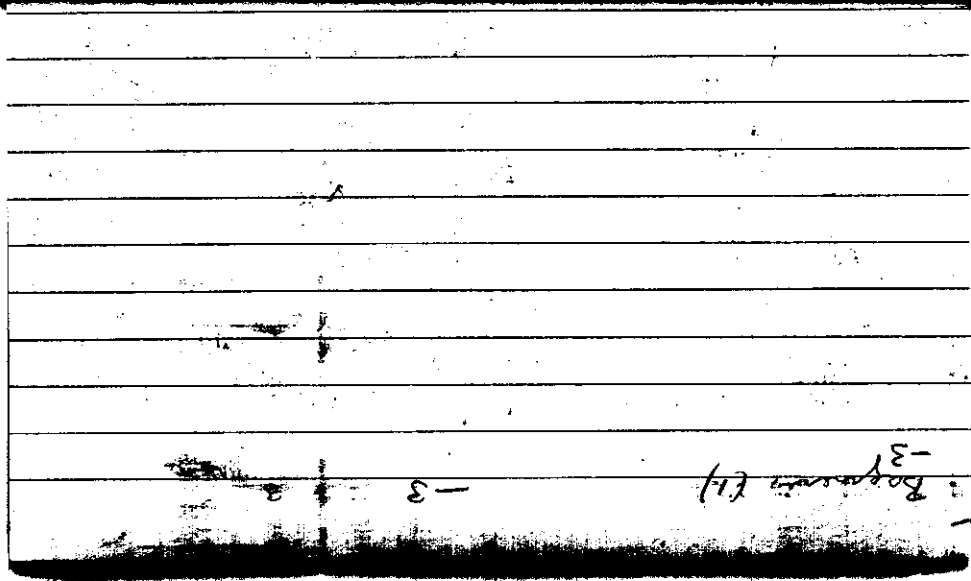
Max. 69.5	Wind F NW 5	Barom. t 72.0	General Obs. 10 <sup>15</sup> (o) -10 <sup>30</sup> (cap floor, a pro)
Min. 41.8	Vis. Ma. 40	28.78	
Dry 44.7	Clouds 0	28.67	
Wet			
R.H. 67		Foren. clear	Foren. fair
Precip. in/ in		Noon fair	Aftern. "
Snowfall/ - Depth in/ in		Eve. "	Night clear

1  
3  
0  
4  
1  
7  
1  
2  
3  
Adding mass | 9 | -1 + 21 22 + 2.2 24

STATE COLLEGE, Pa. Date **MAY 19 1941**

Time  
6:45

Max. 69.8	Wind F W 2	Barom. t 74	General Obs. 700' 18:45' - 19:10
Min. 44.7	Vis. Km. 20	28.99	
Dry 56.4	Clouds < 1	(red.) 28.87	
Wet	ci		
R.H. 57		Morn. fair	Foren. fair
Precip. mm/ in.		Noon n	Aftern. ptly cloudy
Snowfall, Depth in/ in.		Eve. *	Night fair



-3  
Boggs (11)

-3

STATE COLLEGE, Pa. Date **MAY 19 1941**

Time  
18:55

Max.	Wind F	Barom.	General Obs.
80.4	W 3	t 74	
Min.	Vis. km.	P	
	50	28.99	
Dry	Clouds	b (red.)	
74.5	3	28.87	
Wet	ci flocc ci fil.		
R.H.		Morn.	Foren.
34			
Precip.		Noon	Aftern.
mm/ in.			
Snowfall/ -Depth		Eve.	Night
in/ in.			

Türkiye (1973) - 21 + 35 56 + 0.6 2.4	
-1	0
1	0
2	-3
-1	
7	
-5	
2	
6	
-5	
-1	
1	
2	
4	
7	
0	
0	
-5	
0	
1	
2	

Max. 80.3	Wind F WSW	Barom. t 78	General Obs. 13 <sup>15</sup> -13 <sup>45</sup> 0) ca flocc 17 <sup>30</sup> -18 <sup>20</sup> 0)
Min. 55.2	Vis. km. 30	29.02	
Dry 62.4	Clouds 3	28.89	
Wet	ci flocc ci fil ci gra		
R.H. 67		Foren. fair	Foren. fair
Precip. in/ in		Noon "	Aftern. fly cloudy (ci, cs, ac)
Snowfall/ - Depth in/ in		Eve. "	Night fair

2  
0  
7  
5  
2  
5  
4  
6

Bateria (8) - 23 + 13 36  
- 1.2 4.5



STATE COLLEGE, Pa. Date

MAY 21 1941

Time

6:42

Max. 88.5	Wind F Calm	Barom. t 81.3	General Obs. 00-24 00-1
Min. 56.4	Vis. km. 10	29.04	
Dry 62.6	Clouds 2 00	(red.) 28.90	
Wet	a		
R.H. 77		MORN. fair, hazy	Foren. fair to clear, hazy
Precip. —	in/	NOON clear, hazy	Aftern. clear to fair, "
Snowfall, -Depth in/	in/	Eve. fair "	Night fair "



STATE COLLEGE, Pa. Date **MAY 22 1917**

Time  
6:40

Max. 91.0	Wind F W 2	Barom. t 83.5	General Obs. 7:00 ∞' 11 <sup>h</sup> -11:30 ☉ a flare
Min. 62.6	Vis. km. 6 ∞'	p 28.98	14:50 T
Dry 69.8	Clouds 6	p (red.) 28.84	15:10 0° 1510 <del>TR</del> 15 <sup>15</sup> 0 <sup>20</sup> -16:45
Wet	ci ca ac		☉ 21°-21 <sup>20</sup> ☉ 21:20-22:50 TR 19:58-22:20
R.H. 62		Foren. fair to pthly cloudy	Foren. partly cloudy
Precip. mm/ in.		Noon cloudy	Aftern. cloudy to overcast, thunder
Snowfall, in/ in.	-Depth in.	Eve. thunder	Night " to partly cloudy



Max. 90.6	Wind F S 1	Barom. t 84.0	General Obs. 12:22 ● <sup>1</sup> 12:30 ● <sup>2</sup> -12:40
Min. 59.8	Vls. km. 2	Barom. 28.88	13:12 ● <sup>3</sup> dr.
Dry 65.4	Clouds ci ac	Barom. (red.) 28.74	14:38 ● <sup>4</sup> -15:10
Wet			
R.H. 89		Morn. partly cloudy	Foren. cloudy
Precip. 8.4 mm / 0.33 in		Noon overcast rain	Aftern. overcast to cloudy rain
Snowfall, - Depth in / in		Eve. cloud to dly clud	Night clearing

3-  
9-  
8-  
7-  
1-  
E

4.5 57 - 27 6 + 87 - (9) *mirrored*

STATE COLLEGE, Pa. Date

MAY 24 1941

Time

6.42

Max.	Wind F	Barom.	General Obs.
78.3	NNW 9	t 77	
Min.	Vis. Mm.	Barom.	
47.4	14	28.99	
Dry	Clouds	h/red.	
50.4	0	28.86	
Wet			
R.H.	Moist.	Foren.	
65	clear	clear to pty cloudy (ac p. sea)	
Precip.	Noon	Aftern.	
0.3 mm / 0.02 in	pty cloudy	pty cloudy	
Snowfall / - Depth	Eve.	Night	
in / in	fair to clear	clear	

1  
2  
3  
4  
5  
6  
7  
8  
9  
10  
11  
12  
13  
14  
15  
16  
17  
18  
19  
20  
21  
22  
23  
24  
25  
26  
27  
28  
29  
30  
31  
32  
33  
34  
35  
36  
37  
38  
39  
40  
41  
42  
43  
44  
45  
46  
47  
48  
49  
50  
51  
52  
53  
54  
55  
56  
57  
58  
59  
60  
61  
62  
63  
64  
65  
66  
67  
68  
69  
70  
71  
72  
73  
74  
75  
76  
77  
78  
79  
80  
81  
82  
83  
84  
85  
86  
87  
88  
89  
90  
91  
92  
93  
94  
95  
96  
97  
98  
99  
100



STATE COLLEGE, Pa. Date **MAY 25 1941**

Time  
0700

Max. 62.9	Wind F WSW 2	Barom. t 72.0	General Obs. 0-24 00°
Min. 38.7	Vis. km. 16	P 29.14	
Dry 44.6	Clouds ci	h (red.) 29.03	
Wet	co		<i>sky milky looking (∞ aloft)</i>
R.H. 75		MORN. <i>fair</i>	PORN. <i>fair to clear</i>
Precep. mm/ in.		NOON <i>clear</i>	AFTN. <i>clear</i>
Snowfall, -Depth in/ in.		EVE. "	NIGHT "

Handwritten notes on lined paper, including the equation  $0.5 L^2 + 5I = 0.1 + 5 = (E)$  and a circled '6'.

STATE COLLEGE, Pa. Date **MAY 26 1941**

Time  
0645

Max. 68.9	Wind F W 1	Barom. t 70.0	General Obs.
Min. 44.6	Vis. Sta. 12	28.96	
Dry 53.6	Clouds 10	(red.) 28.85	
Wet	sc		
R.H. 58	FORE.	overcast	Foren. cloudy to pty cloudy
Precip.	Noon	cloudy	Aftern. " " " "
Snowfall, Depth in/ in	Eve.	fair	Night fair

	7	0
	1	1
	4	4
	3	3
	3	1
	4	1
	0	4
	3	-4
	3	8
	0	2
	-1	1
	-1	0
	5	3
	2	-1
	6	-5
	1	-1
	2	1
	-9	-1
	2	2
	-5	-2
	-3	-2

Andrian (49) -53 + 77 130 +0.5 2.6

STATE COLLEGE, Pa. Date **MAY 27 1941**

Time  
0645

Max. 83.4	Wind F SW 4	Barom. t 79.0	General Obs. 912 T ② 19:01-19:35
Min. 53.6	Vis. km. 12	p 28.86	③ 20:54-56
Dry 72.4	Clouds 7	p (red.) 28.73	
Wet	ac ci ca co		
R.H. 65		Foren. <i>fair</i>	Foren. <i>partly cloudy</i>
Precip. - in/		Noon <i>partly cloudy to cloudy</i>	Aftern. <i>cloudy, showers</i>
Snowfall, - Depth in/		Night <i>cloudy, showers</i>	Night <i>partly cloudy</i>

THE FOLLOWING RECORD IS KEPT IN THE  
COLLEGE/M.I. LIBRARY:

Author:

Title:

Year:

Price:

Purchase is desirable: immediately eventually

Please fill out and give either to Miss  
Lucille Jackson or H. Landsberg. Your

cooperation is appreciated.

STATE COLLEGE, Pa. Date **MAY 28 1941**

Time  
**0645**

Max. <b>88.3</b>	Wind F <b>SSW 3</b>	Barom. t <b>81.0</b>	General Obs.
Min. <b>67.0</b>	Vis. km. <b>7 ∞</b>	P <b>29.03</b>	
Dry <b>73.4</b>	Clouds <b>cu</b>	σ (red.) <b>28.89</b>	
Wet	<b>cc</b>	<b>cc</b>	
R.H. <b>75</b>		Morn. <i>cloudy haze</i>	Foren. <i>cloudy</i>
Precip. <b>2.9 mm / 0.11 in.</b>		Noon <i>ply cloudy</i>	Aftern. <i>ply cloudy</i>
Snowfall, - Depth in / in.		Even. <i>fair</i>	Night <i>fair to cloudy</i>

The following reference is missing in the  
College/W.I. Library:

Author:

Title:

Year:

Price:

Purchase is desirable: immediately  
eventually

Please fill out and give either to Miss

Lucille Jackson or H. Jandberg. Your

cooperation is appreciated.



STATE COLLEGE, Pa. Date **MAY 29 1941**

Time  
6:48

Max. 82.8	Wind F NW 3	Barom. t 84.	General Obs. 13 07 T (.)	
Min. 72.8	Vis. km. 10	p 29.00	17:02-17:30	☉ 16:58-17:05 ☉ 17:40-17:50 ☉ h 20:20-21:30
Dry 74.6	Clouds 10 sc	p (red.) 28.86	T. i SW	
Wet	cu. cong			
R.H. 70		Morn. overcast to cloudy	Foren. cloudy to pthly cloudy (cu. cong)	
Precip. mm/ in.		Noon cloudy (cu cong)	Aftern. (cu) in mist cloudy distant thunderstorm	
Snowfall/-Depth in/ in.		Eve. overcast, light showers	Night overcast to cloudy	

Belgium & Holland

Neale (72) -114 + 61 - 53 175 -0.7 2.4

De Bilt (43) -69 +130 +111 249 +1.2 2.7

(165) -183 + 241 + 58 424 +0.4 2.6

STATE COLLEGE, Pa. Date

MAY 30 1941

Time

7:55

Max. 85.6	Wind F ENE 2	Barom. t 80.0	General Obs. ☉ 0:50-4:10 (11"-13" ☉)	
Min. 52.0	Vis. km. 30	p 29.00		
Dry 53.7	Clouds 79	p(red.) 28.86		
Wet	st			
R.H. 85	sc as	Morn. overcast, rain to cloudy	Foren. cloudy to pthly cloudy	(w/ breeze)
Precip. 2.2 mm / 0.09 in.		Noon pthly cloudy	Aftern. pthly cloudy to fair	
Snowfall/-Depth in/ in.		Eve. fair to clear	Night clear	

Switz-Kant

Chur (19) - 40 + 11 - 29 51 = 1.7 3.0

Fürst (34) - 87 + 34 - 53 121 = 1.6 3.6

(51) - 127 + 45 - 82 172 = 1.6 3.4

STATE COLLEGE, Pa. Date **MAY 31 1941**

Time  
6:42

Max. 74.6	Wind F N 2	Barom. t 76.0	General Obs. 7 <sup>00</sup> 2 = i N.E ☉ dr 12:20 ☉° 13:10-18:40 ☉° 20:48-21:10
Min. 48.6	Vis. km. 15	p 28.98	
Dry 52.4	Clouds 9	p (red.) 28.86	
Wet	ac asc		
R.H. 69		Morn. cloudy	Foren. cloudy to overcast
Precip. mm/ in.		Noon overcast, rain drops	Aftern. overcast, rain
Snowfall/ in/	-Depth in.	Eve. " rain	Night " "

2200-0001-94-3

Ann Arbor (12) - 8 + 39 47 + 26 39

STATE COLLEGE, Pa. Date

MAY 1 1941

Time

6<sup>50</sup>

Max. 81.5	Wind F SW 2	Barom. t 75.5	General Obs. 12:10 ● dr - 12:15
Min. 49.6	Vis. km. 12	P 28.88	12:57 ● dr - 12:55
Dry 55.5	Clouds A1	o (red.) 28.76	1305 ● dr - 13:12
Wet	ac. lent		16 <sup>45</sup> -17 <sup>h</sup> ○ cs fil, cs flw
R.H. 58		Morn. fair	Foren. fair to pthly cloudy
Precip. in/ in.		Noon cloudy raindrops	Aftern cloudy
Snowfall, -Depth in/ in.		Eve. cloudy	Night partly cloudy

