

STATE COLLEGE, Pa. Date JAN 1 1944

Time
1300

Max.	Wind F NE 1	Barom. t	General Obs.	
Min.	Vis. km. 8	p		
Dry 39.6	Clouds ?	p(red.)		
Wet	Ac			
R.H. 57		Morn.	Foren.	
Precip. mm/ in.		Noon	Aftern.	
Snowfall/Depth in/ in.		Eve.	Night	

Lawrence 3) $-4^2 + 4$ 8 0 2.7

4
-2
-2

STATE COLLEGE, Pa. Date

JAN 1 1941

Time
1900

Max.	Wind F <i>calm</i>	Barom. t	General Obs.
Min.	Vis. km. 1	p	
Dry 36.2	Clouds 4	p(red.)	
Wet	<i>Acu</i>		
R.H. 60		Morn.	Foren.
Precip. mm/ in.		Noon	Aftern.
Snowfall/-Depth in/ in.		Eve.	Night

- La Jolla

11		20
11		-32
1096		+25
14		-7
14		57
12		-0.4
11		
12		2.8
91		
11		
0		
1		
3		
0		

STATE COLLEGE, Pa. Date JAN 2 1941

Time
0655

Max. 42.1	Wind F E 3	Barom. t 73.0	General Obs. ☉ 1118-1600 ☉ 1630-1830
Min. 26.6	Vis. km. 5	p 29.00	/ (*) / 1130-1600 (*) 1630-1830
Dry 32.8	Clouds 70	p (red.) 28.88	
Wet	st		☉ 1930-2200 ☉ 2200-2300
R.H. 58		Morn. overcast (sl)	Foren. overcast, lgt rain
Precip. - mm/ in.		Noon " rain slat	Aftern. " freezing rain slat
Snowfall/-Depth in/ in.		Eve. " slat " freezing rain	Night " " " slat

0	4	-1	0	-2	0	0	0
-7	-1	-3	0	-1	-1	-6	-1
-3	2	-2	7	-3	4	-5	-5
-6	-3	-8	4	-1	3	4	4
0	2	-7	7	1	3	-3	-4
-3	-3	-5	0	-1	3	0	3
-8	1	-8	2	-4	1	-3	-1
8	-4	-4	8	-7	-4	1	-1
5	-4	-2	-1	-1	-2	-1	-1
3	-4	4	-3	-4	2	0	0
-9	-4	-1	3	-1	0	0	0
-3	-6	-1	1	-1	1	0	0
1	-8	-2	5	-1	5	-7	-7
-3	-3	-3	4	-1	4	-6	-6
1	2	-2	1	-1	2	-3	-3
-8	3	2	-4	-6	2	-3	-3
3	0	2	8	-7	4	1	1
1	3	-3	4	-1	3	0	0
-4	-4	-2	0	-2	4	-5	-5
-8	-2	-4	2	-4	2	-1	-1
0	-4	-1	-2	-1	2	-3	-3
-3	-3	-1	4	-1	4	-1	-1
-6	-4	-2	1	-3	7	-1	-1
-3	-1	-2	4	-3	4	-1	-1
-7	-1	-3	7	-2	7	-1	-1
-1	-1	-3	0	-2	0	-1	-1
0	4	-1	-2	-1	-2	0	0

Ekatereimburg (147) -309, +141 450 -1.1 3.1

Max.	Wind F S 4	Barom. t	General Obs.	
Min.	Vis.km. 6	p		
Dry 32.5	Clouds 10	p(red.)		
Wet	st.			
R.H. 92		Morn.	Foren.	
Precip. .1 mm/ in.		Noon	Aftern.	
Snowfall/-Depth in/ in.		Eve.	Night	

-40
Kucino (7) - 43 + 3 46 - 5.7 6.6
-7
-9
-7
-6
3
8
-1
-1
1
-1.0
1.0

STATE COLLEGE, Pa. Date

JAN 2 1941

Time
1901

Max.	Wind F S 2	Barom. t	General Obs.
Min.	Vis. km. 5	p	
Dry 31.7	Clouds 10	p(red.)	
Wet	st		
R.H. 92		Morn.	Foren.
Precip. 5.6 mm/ in.		Noon	Aftern.
Snowfall/-Depth in/ in.		Eve.	Night

Laibach (3) -4 +1 5 -1.0 1.7
-4
+1
+1
1
+1.0
1.0

STATE COLLEGE, Pa. Date JAN 3 1941

Time
0700

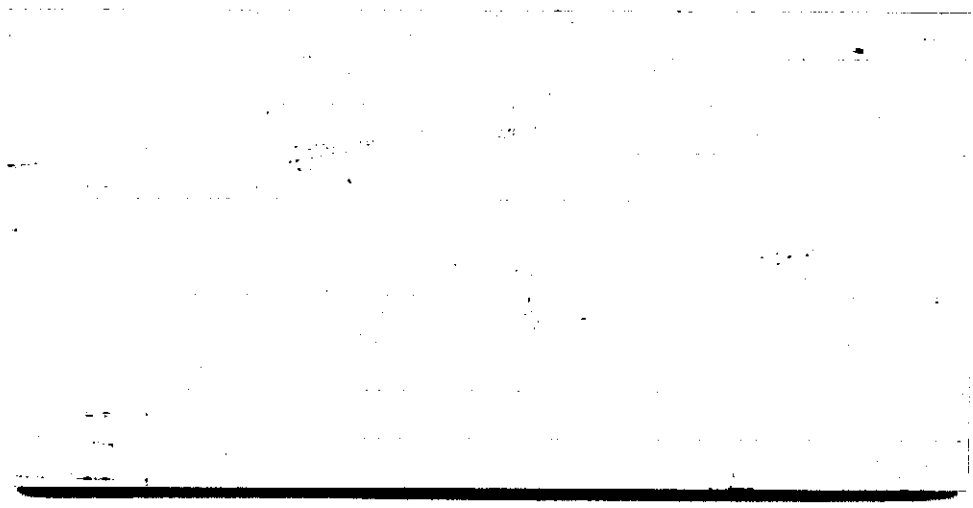
Max. 34.8	Wind F NNW 3	Barom. t 74	General Obs. ∞ ² 1200-1800 9° 2145-2400	
Min. 31.7	Vis. km. 8	p 28.83		
Dry 34.8	Clouds 10	p(red.) 28.71		
Wet	st			
R.H. 82		Morn. overcast (st)	Foren. overcast haz	
Precip. 6.0 mm / 0.24 in.		Noon " , haz	Aftern. " "	
Snowfall / -Depth in / in.		Eve. " "	Night " , lgt drizzle	

STATE COLLEGE, Pa. Date

JAN 3 1941

Time
1300

Max.	Wind F WNW 2	Barom. t	General Obs.	
Min.	Vis. km. 7	p		
Dry 36.2	Clouds 10	p(red.)		
Wet	st			
R.H. 79		Morn.	Foren.	
Precip. mm/ in.		Noon	Aftern.	
Snowfall/-Depth in/ in.		Eve.	Night	



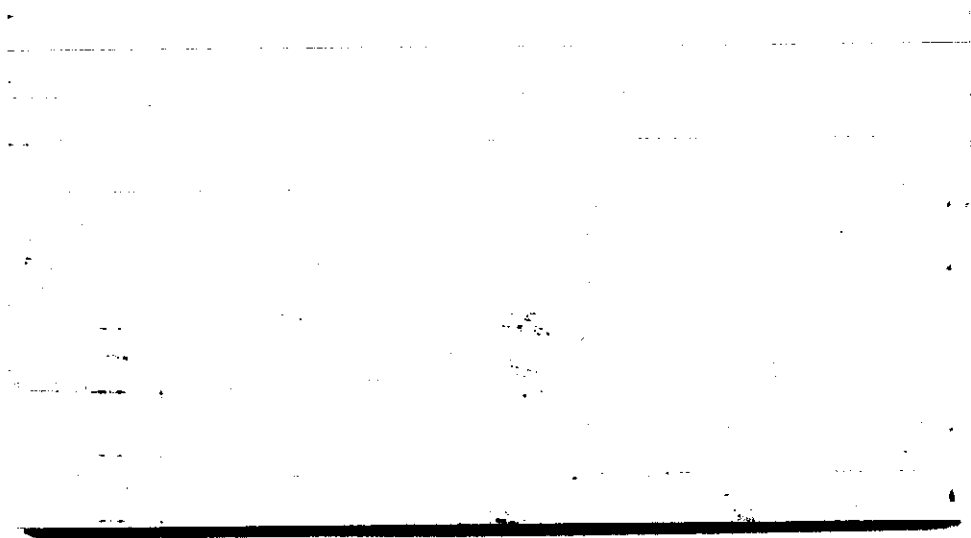
STATE COLLEGE, Pa. Date

JAN 3 1941

Time

1901

Max.	Wind F E 1	Barom. t	General Obs.	
Min.	Vis.km. 3	p		
Dry 34.3	Clouds 10	p(red.)		
Wet	51			
R.H. 87		Morn.	Foren.	
Precip. mm/ in.		Noon	Aftern.	
Snowfall/-Depth in/ in.		Eve.	Night	



STATE COLLEGE, Pa. Date

JAN 4 1941

Time

0659

Max. 36.9	Wind F Calm	Barom. t 71	General Obs. ∞° 0000-1245 / *° 1245-1250
Min. 24.1	Vis. km. 6	p 28.57	* ¹ 1250-1304 * ² 1345-1410 ▽
Dry 24.8	Clouds 0	p (red.) 28.46	*° 1440-1445 ▽
Wet			
R.H. 81		Morn clearing	Foren. clear, moderate haze
Precip. — mm / — in.		Noon snow increasing cloudiness	Aftern. Alternate snow showers and fog TTT TTT TTT
Snowfall / -Depth in / in.		Eve. ptly cloudy to cloudy	Night cloudy

anerometer frozen in morning

Denver (1) + 1
1.0

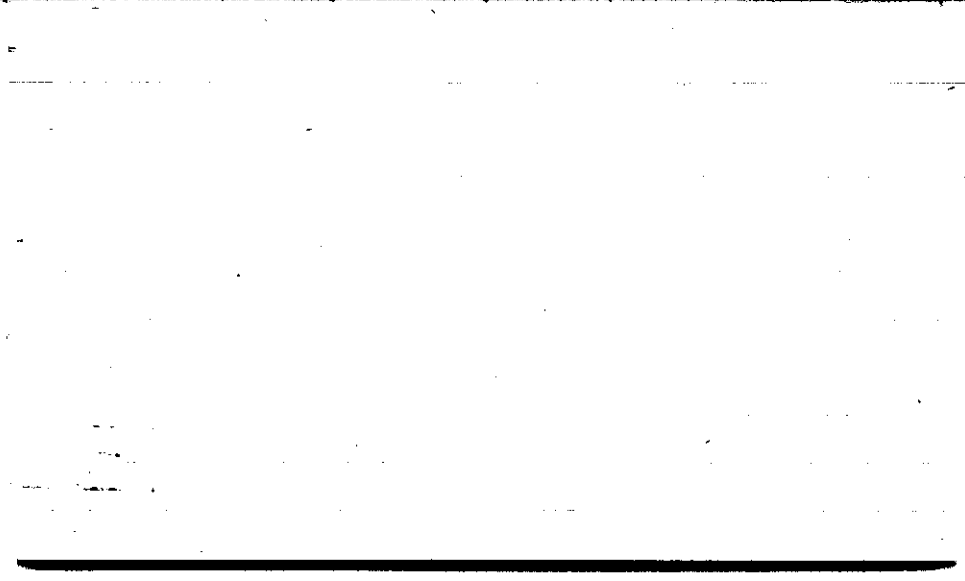
STATE COLLEGE, Pa. Date

JAN 4 1941

Time

1300

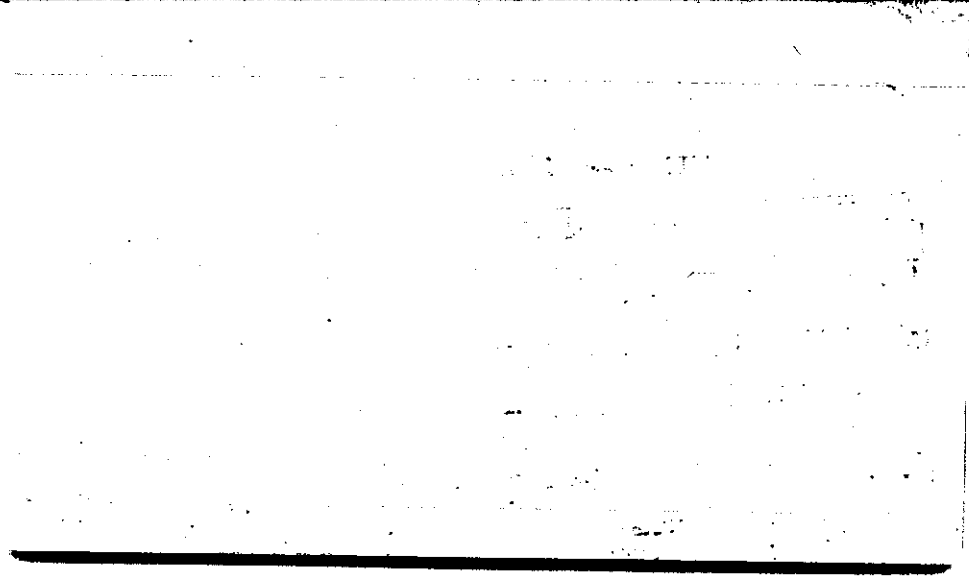
Max.	Wind F WSW 4	Barom. t	General Obs.	
Min.	Vis. km. 1	p		
Dry 29.2	Clouds 10	p(red.)		
Wet	St.c.			
R.H. 90		Morn.	Foren.	
Precip. T mm/ in.		Noon	Aftern.	
Snowfall/-Depth in/ in.		Eve.	Night	



STATE COLLEGE, Pa. Date JAN 4 1900

Time
1900

Max.	Wind F W 7	Barom. t	General Obs.
Min.	Vis. km. 10	p	
Dry 13.4	Clouds 0	p(red.)	
Wet			
R.H. 48		Morn.	Foren.
Precip. 0.1 mm/ in.		Noon	Aftern.
Snowfall/-Depth in/ in.		Eve.	Night



STATE COLLEGE, Pa. Date JAN 5 1941

Time
0645

Max. 34.5	Wind F W 6	Barom. t 65.0	General Obs. 0700 7 * μ 1835-2130
Min. 12.2	Vis. km. 12	p 28.76	
Dry 14.4	Clouds 79	p(red.) 28.66	
Wet	sc. sc		
R.H. 61		Morn. cloudy	Foren. cloudy
Precip. 0.1 mm / T in.		Noon "	Aftern. " to sunset
Snowfall/-Depth in/ in.		Eve. sunset	Night "

7
4
-1
-1
-3
-1
-3
-1
-6
-1
2

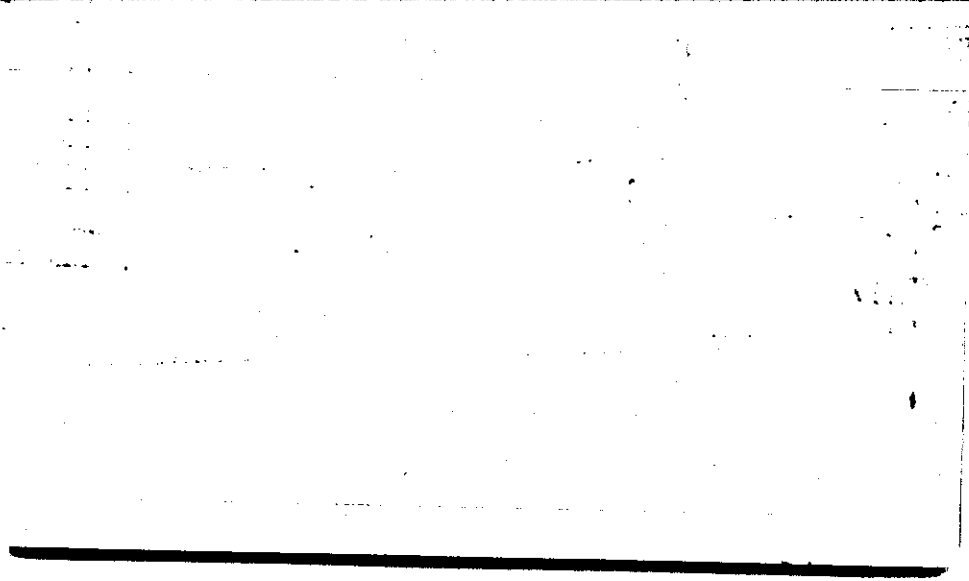
-2
Edinburgh (11) -16 +14 30 -0.2 2.7

STATE COLLEGE, Pa. Date

JAN 5 1941

Time
1905

Max.	Wind F WSW 4	Barom. t	General Obs.	
Min.	Vis. km. 8	p		
Dry 18.2	Clouds 10*	p(red.)		
Wet	Sc			
R.H. 68		Morn.	Foren.	
Precip. T mm/ in.		Noon	Aftern.	
Snowfall/-Depth in/ in.		Eve.	Night	



STATE COLLEGE, Pa. Date JAN 6 1941

Time 0700

Max. 22.2	Wind F S 1	Barom. t 67.0	General Obs. 0700 07 0855X ^H
Min. 13.4	Vis. km. 20	p 29.15	0947 single * plate
Dry 22.2	Clouds 79	p (red.) 29.05	1525 \odot 16 ^h \odot -1695
Wet	sc		19 ^h -2230 \odot
R.H. 65		Morn. cloudy	Foren. cloudy to p'tly cloudy
Precip. 0.00 mm / 1 in.		Noon partly cloudy (frou)	Aftern. p'tly cloudy (frou, as per)
Snowfall / -Depth in / in.		Eve. fair	Night fair

-5
-4
-8
5
Debra Dunn (4) -17 + 5 22 -3.0 5.5
-12

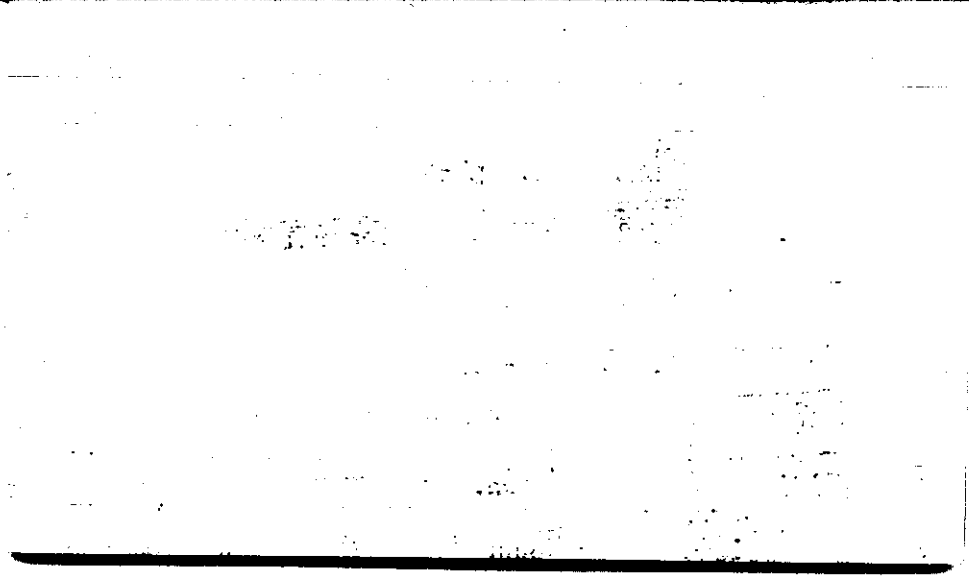
STATE COLLEGE, Pa. Date

JAN 6 1941

Time

1900

Max.	Wind F W 1	Barom. t 67.0	General Obs.	
Min.	Vis. km. 8+	p		
Dry 24.8	Clouds 4	p(red.)		
Wet	Ci Cs			
R.H. 51		Morn.	Foren.	
Precip. T mm/ in.		Noon	Aftern.	
Snowfall/-Depth in/ in.		Eve.	Night	



STATE COLLEGE, Pa. Date **JAN 7 1941**

Time
0700

Max. 29.4	Wind F NE 1	Barom. t 20.0	General Obs. 0700 U ² BT 15 ^h 10 ^m -1630
Min. 13.6	Vis. km. 6.4	p 29.30	
Dry 14.0	Clouds 2	p (red.) 29.19	
Wet	ci cs		
R.H. 87		Morn. fair	Foren. fair
Precip. mm/ in.		Noon " as fit	Aftern. "
Snowfall/Depth in/ in.		Eve. clear	Night ptly cloudy to cloudy

1	7	1	0	0	0	0	0	0	0
1	6	-8	2	-1	-1	-1	-1	-1	-1
0	3	-7	-1	-6	-5	-4	-3	-2	-1
2	1	-1	-2	-1	-2	-3	-4	-5	-6
2	1	-1	-4	-3	-2	-1	0	1	2
6	-2	3	-3	-1	1	2	3	4	5
1	4	-7	0	-6	-5	-4	-3	-2	-1
-4	1	-2	0	-2	-3	-4	-5	-6	-7
0	3	5	-2	0	1	2	3	4	5
-7	0	0	0	1	2	3	4	5	6
3	-1	1	9	-5	-3	-2	-1	0	1
3	-1	1	9	-5	-3	-2	-1	0	1
5	-5	-2	0	-1	0	1	2	3	4
1	1	-4	-2	-7	-3	-2	-1	0	1
+5	3	-4	-4	-4	-3	-2	-1	0	1
+5	8	-5	-4	-7	-3	-2	-1	0	1
+2	1	-8	1	-3	-3	-2	-1	0	1
-5	3	-7	4	-4	-4	-3	-2	-1	0

-38

D. B. 17 (128) -180 +192 322 -0.3 2.5

STATE COLLEGE, Pa. Date

JAN 7 1961

Time
1935

Max. 29.7	Wind F NE 1	Barom. t	General Obs.	
Min.	Vis. km. 10	p		
Dry 24.6	Clouds 7	p(red.)		
Wet				
R.H. 64		Morn.	Foren.	
Precip. 0.0 mm/T in.		Noon	Aftern.	
Snowfall/-Depth in/ in.		Eve.	Night	

1. The first part of the document discusses the importance of maintaining accurate records of all transactions. It emphasizes that proper record-keeping is essential for the integrity of the financial system and for the ability to detect and prevent fraud.

2. The second part of the document outlines the specific requirements for record-keeping, including the need to maintain original documents and to keep copies of all transactions. It also discusses the importance of regular audits and the need to ensure that all records are up-to-date and accurate.

3. The third part of the document discusses the consequences of failing to maintain accurate records, including the potential for financial loss and the risk of legal action. It also discusses the importance of training staff on proper record-keeping procedures and the need to ensure that all staff are aware of the importance of accurate records.

4. The fourth part of the document discusses the importance of maintaining accurate records for the purpose of financial reporting. It emphasizes that accurate records are essential for the preparation of financial statements and for the ability to provide reliable information to investors and other stakeholders.

5. The fifth part of the document discusses the importance of maintaining accurate records for the purpose of tax reporting. It emphasizes that accurate records are essential for the preparation of tax returns and for the ability to provide reliable information to the tax authorities.

6. The sixth part of the document discusses the importance of maintaining accurate records for the purpose of legal proceedings. It emphasizes that accurate records are essential for the ability to provide evidence in court and for the ability to defend against legal claims.

7. The seventh part of the document discusses the importance of maintaining accurate records for the purpose of internal control. It emphasizes that accurate records are essential for the ability to identify and prevent errors and for the ability to ensure that all transactions are properly recorded and reported.

8. The eighth part of the document discusses the importance of maintaining accurate records for the purpose of risk management. It emphasizes that accurate records are essential for the ability to identify and assess risks and for the ability to develop and implement risk management strategies.

9. The ninth part of the document discusses the importance of maintaining accurate records for the purpose of compliance. It emphasizes that accurate records are essential for the ability to demonstrate compliance with applicable laws and regulations and for the ability to avoid penalties and other consequences of non-compliance.

10. The tenth part of the document discusses the importance of maintaining accurate records for the purpose of reputation management. It emphasizes that accurate records are essential for the ability to maintain a positive reputation and for the ability to respond to negative publicity and other challenges to the organization's reputation.

STATE COLLEGE, Pa. Date

JAN 8 1941

Time

0700

Max. 29.3	Wind F W 1	Barom. t 71.0	General Obs. 0200 W ² 8 ⁴ sun p. 6-0820	
Min. 12.6	Vis. km. 6	p 29.29	2045-22 ⁴ ☉	
Dry 15.0	Clouds 9	p(red.) 29.18		
Wet	asc as			
R.H. 92		Morn. cloudy	Foren. cloudy to overcast	
Precip. mm/ in		Noon overcast	Aftern. cloudy	
Snowfall/-Depth in/ in		Eve. cloudy	Night "	

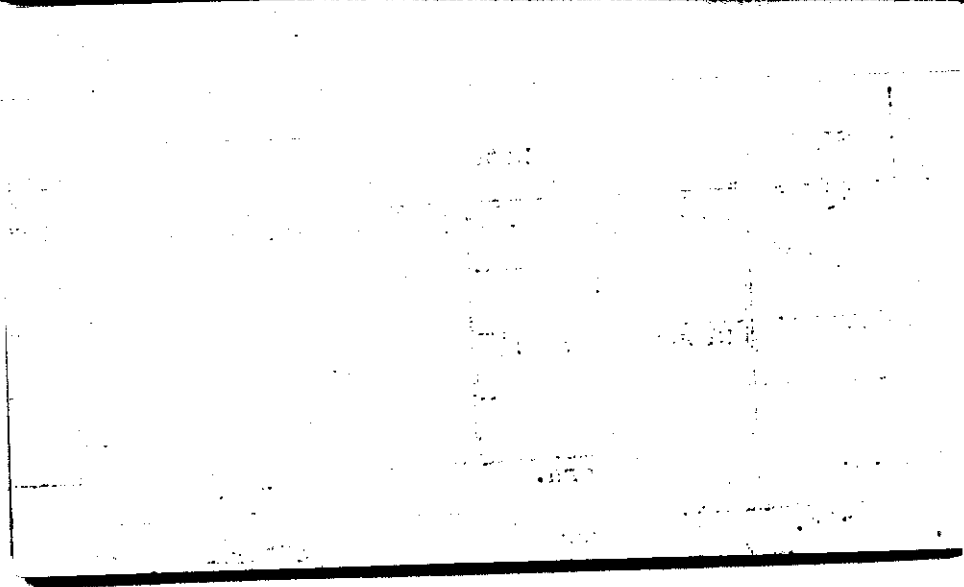
0	2
1	1
3	3
2	2
-1	0
-2	2
-3	-6
1	-3
0	4
0	3
1	-6
1	0
-7	0
4	0
1	-5
4	-5
-3	-7
2	2
-5	0

Copernigen (40) -53 + 44 97 -0.2 2.4
 -9

STATE COLLEGE, Pa. Date JAN 8 1941

Time 1855

Max.	Wind F Sw 1	Barom. t	General Obs.	
Min.	Vis. km. 4 00	p		
Dry 29.2	Clouds > 9	p(red.)		
Wet				
R.H. 61		Morn.	Foren.	
Precip. mm/ in.		Noon	Aftern.	
Snowfall/-Depth in/ in.		Eve.	Night	



STATE COLLEGE, Pa. Date **JAN 9 1941**

Time
0702

Max. 30.2	Wind F S 1	Barom. t 71.5	General Obs. *0855-1430 @1715-1725
Min. 14.9	Vis. km. 1.5	p 29.03	
Dry 28.5	Clouds > 900'	p (red.) 28.92	
Wet			
R.H. 77		Morn. cloudy	Foren. overcast + snow
Precip. mm/ in.		Noon overcast snow	Aftern. " " "
Snowfall/-Depth in/ in.		Eve. " " "	Night " " "

3
-8
-6
-7
8
-1
-8
-6
1

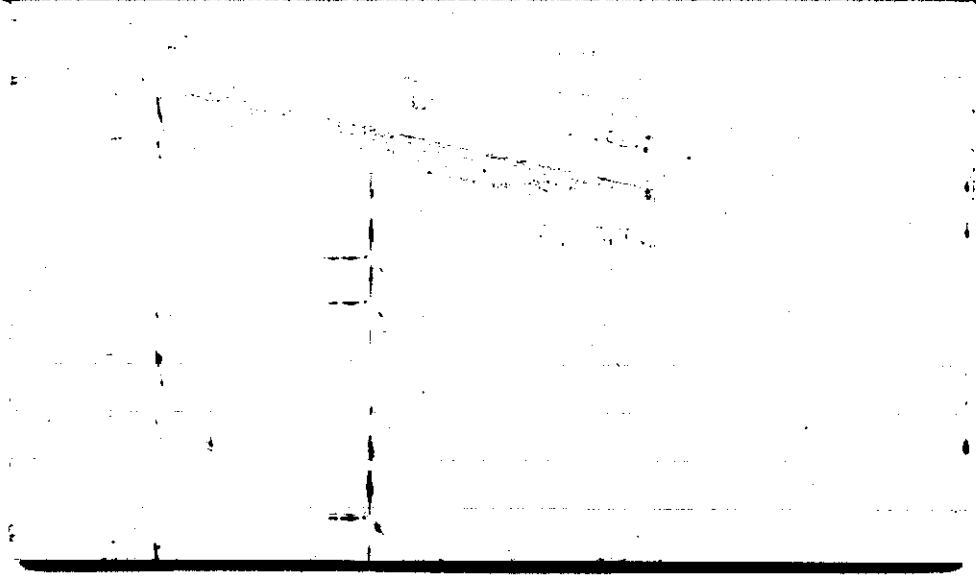
Colm 6ra (10) - 33 + 14 47
-19
61 - 19 47

STATE COLLEGE, Pa. Date

JAN 9 1941

Time
1855

Max.	Wind F W 3	Barom. t	General Obs.	
Min.	Vis. km. 4	p		
Dry 338	Clouds 10	p(red.)		
Wet	sc			
R.H. 78		Morn.	Foren.	
Precip. 0.3 mm/ in.		Noon	Aftern.	
Snowfall/-Depth in/ in.		Eve.	Night	

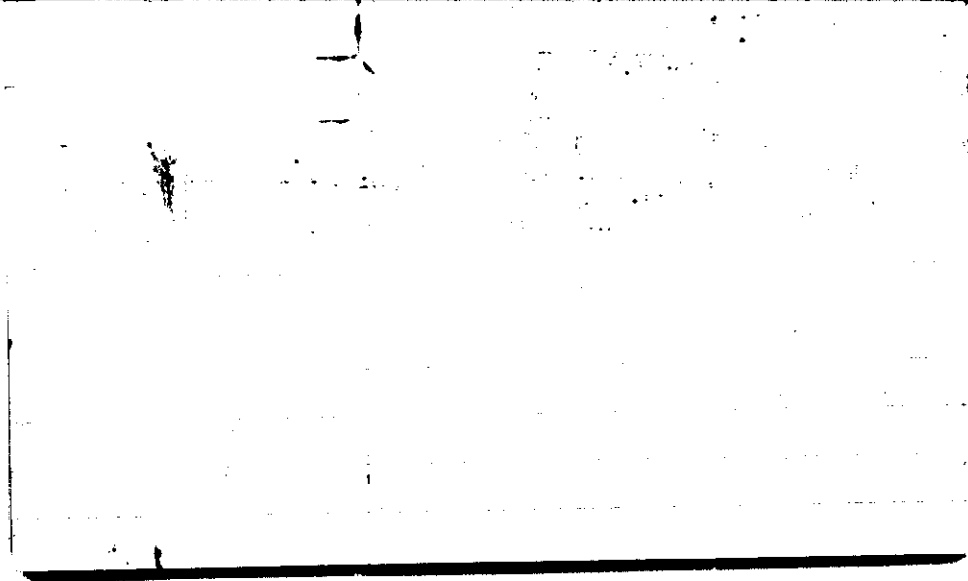


STATE COLLEGE, Pa. Date

JAN 10 1941

Time
0702

Max. 34.6	Wind F NW 3	Barom. t 28	General Obs.	
Min. 25.7	Vis. km. 12	p 29.04	18 ☉ 19 ^h ☉ -2230	
Dry 26.3	Clouds 10	p(red.) 28.94	*H 1030-1035	
Wet	sc		1830 ☉	
R.H. 64		Morn. overcast	Foren. overcast	
Precip. 0.3 mm / 0.01 in.		Noon "	Aftern. cloudy	
Snowfall/-Depth in/ in		Eve ptly cloudy to fair	Night ptly cloudy to cloudy	



STATE COLLEGE, Pa. Date **JAN 10 1926**

Time
1855

Max. 28.0	Wind F C	Barom. t	General Obs.
Min.	Vis. km. 2	p	
Dry 25.2	Clouds 10	p(red.)	
Wet	as ret		
R.H. 67		Morn.	Foren.
Precip. mm/ in.		Noon	Aftern.
Snowfall/Depth in/ in.		Eve.	Night

0
 1-
 2
 3
 4
 4-
 4-
 5+

+5
 Colom 60 (8) -15 +20 35 +0.6 4.4

STATE COLLEGE, Pa. Date

JAN 11 1941

Time
0700

Max. 27.9	Wind F NNE 2	Barom. t 64	General Obs. 0545 *f - 0705 ∞' all day
Min. 21.2	Vis. km. 6	p 28.80	
Dry 22.8	Clouds S ₂ ⁰	p(red.) 28.71	
Wet	NS		
R.H. 86		Morn. overcast snowflakes	Foren. cloudy
Precip. 0.0 mm/ T _F in.		Noon clear	Aftern. clear
Snowfall/-Depth in/ in.		Eve. "	Night fairs

» Nemchätel (19) -47 + 8 55 -2.1 2.9

-2			
-6			(12)
-1			
-4			-12
-8			
-2			+7
-1			
-0			-5
-5			19
-1			
0	0		-0.4
7			1.6
-5			
-1			
-3			
-4			
4			

STATE COLLEGE, Pa. Date JAN 11 1941

Time
1900

Max. 29.8	Wind F calm	Barom. t	General Obs.
Min.	Vis. km. 7	p	
Dry 30.2	Clouds 0	p (red.)	
Wet			
R.H. 49		Morn.	Foren.
Precip. mm/ in.		Noon	Aftern.
Snowfall/-Depth in/ in.		Eve.	Night

[C. p. 11. H. 7] (1) < +2.0 2.0

STATE COLLEGE, Pa. Date JAN 12 1941

Time
0658

Max. 34.2	Wind F W 4	Barom. t 70.0	General Obs. 7 1845-1850	
Min. 22.2	Vis. km. 4	p 28.75		
Dry 26.1	Clouds 70 st	p(red.) 28.68		
Wet				
R.H. 82		Morn. overcast	Foren. overcast	
Precip. 0.0 mm/ in.		Noon "	Aftern. "	
Snowfall/-Depth in/ in.		Eve. "	Night "	

STATE COLLEGE, Pa. Date

JAN 12 1941

Time
1900

Max.	Wind F W 4	Barom. t	General Obs.	
Min.	Vis. km. 2	p		
Dry 31.6	Clouds 10 st	p(red.)		
Wet				
R.H. 80		Morn.	Foren.	
Precip. T mm/ in.		Noon	Aftern.	
Snowfall/-Depth in/ in.		Eve.	Night	

-7
Naples (5) - 22 + 15 37 - 1.4 7.4
-9 12
-7 8
8
-6 -1
7 +8
+7
9
+3.5
4.5

JAN 13 1941

Time
0700

Max. 31.6	Wind F W 5	Barom. t 71.2	General Obs. 1 (2) * P/0840-1400
Min. 25.7	Vis. km. 15	p 28.80	
Dry 31.6	Clouds 10	p(red.) 28.69	
Wet	sc		
R.H. 75		Morn. overcast	Foren. overcast frozen drizzle & snow ^{flakes}
Precip. 0.0 mm/ T in.		Noon ", snow flake	Aftern. cloudy to pthy cloudy
Snowfall/-Depth in/ in.		Eve. pthy cloudy	Night pthy cloudy to fair

1/19 - W. 1971

-1	3		21
0	2		
2	-1		-23
1	-1		+33
2	-1		+10
0	-2		
-4	1		56
-2	-1		
2	2		+0.3
0	1		
0	2		1.6
0	0		
1	0		
-1			
0			
-4			
-1			

STATE COLLEGE, Pa. Date **JAN 13 1966**Time
1966

Max.	Wind F.	Barom. t 71.2	General Obs.	
Min.	Vis. km.	p		
Dry 23.0	Clouds 7	p(red.)		
Wet				
R.H.		Morn.	Foren.	
Precip. mm/ in.		Noon	Aftern.	
Snowfall/-Depth in/ in.		Eve.	Night	

9
3
2
3-
6-
3
7-
9-
6
4
3
7
0
-1
-5
-3
-2
-8
-2
-4

44 9.0 - 68 68 + 05 - (02) 05 07 11
11-

STATE COLLEGE, Pa. Date JAN 14 1944

Time
0657

Max. 31.6	Wind F E 1	Barom. t 67.2	General Obs. 8700 L' 16 ^h (o) 1645 (o) -17 ^h
Min. 6.6	Vis. km. 15	p 29.08	
Dry 6.8	Clouds 0	p(red.) 28.98	
Wet			
R.H. 70		Morn. clear	Foren. fair
Precip. 0.0 mm/ T in.		Noon fair	Aftern. " (ci, fd, in place) " (cumus, as)
Snowfall/ -Depth in/ in.		Eve. " (ci)	Night ptly cloudy to cloudy

8
5
-6
Cincinnati (3) - 6 + 7 13 + 0.3 4.3
+1

STATE COLLEGE, Pa. Date

JAN 14 1944

Time
1900

Max.	Wind F S 2	Barom. t	General Obs.
Min.	Vis. km. 25	p	
Dry 24.0	Clouds 6	p(red.)	
Wet	ci, cu acu		
R.H. 27		Morn.	Foren.
Precip. mm/ in.		Noon	Aftern.
Snowfall/-Depth in/ in.		Eve.	Night

	Merida (17)	-53 + 2.6	79	-1.6	4.6
-1					
-7					
-3					
-2					
-7					
2					
0					
-2					
-8					
3					
9					
8					
-1					
-8					
-8					
-7					

STATE COLLEGE, Pa. Date JAN 15 1941

Time
0702

Max. 26.6	Wind F NE 2	Barom. t 71.2	General Obs. *° 0640-1015 0700 <input checked="" type="checkbox"/> T	
Min. 5.9	Vis. km. 2	p 29.00	*° 2202-2230	
Dry 19.2	Clouds 10 hst	p (red.) 28.89	*° 2340-2400	
Wet				
R.H. 80		Morn. overcast, snow	Foren. overcast, snow	
Precip. 0.0 mm/T in.		Noon " —	Aftern. " —	
Snowfall/-Depth in/ in.		Eve. "	Night " snow	

$\frac{8}{2} = 4$

Algebra (4) - 3 + 10 13 + 1.8 3.2

+ 7

STATE COLLEGE, Pa. Date JAN 15 1941

Time
1900

Max.	Wind F E 3	Barom. t	General Obs.	
Min.	Vis.km. 3	p		
Dry 22.1	Clouds 10	p(red.)		
Wet	St			
R.H.		Morn.	Foren.	
Precip. 0.3 mm/ in.		Noon	Aftern.	
Snowfall/-Depth in/ in.		Eve.	Night	

Monte Carmine (2) / +12 12 +6.0 6.0
8
4

STATE COLLEGE, Pa. Date

JAN 16 1941

Time
0702

Max. 22.7	Wind F E Z	Barom. t 72.0	General Obs.	
Min. 17.6	Vis. km. 1.5	p 28.96	☒ 0700 3.5" 2000 N'	
Dry 20.5	Clouds 19 ☉	p (red.) 28.85	* 0000-0640 ☉ 0640-1620	
Wet	nst		☉ 1820-2040 ☉ 20-24	
R.H. 94		Morn. overcast, snow sleet	Foren. overcast sleet	
Precip. 6.5 mm / 0.26 in		Noon " sleet	Aftern. " sleet, overcast	
Snowfall / -Depth in / in		Eve. " " rain	Night " rain drizzle	

M...

1

-5

1

-5

5

-5.0

5.0

STATE COLLEGE, Pa. Date JAN 16 1941

Time
1907

Max.	Wind F NNE 2	Barom. t	General Obs.	
Min.	Vis. km. $\frac{1}{2}$	p		
Dry 29.8	Clouds 10 \odot $\frac{1}{2}$	p(red.)		
Wet				
R.H. 98		Morn.	Foren.	
Precip. 6.8 mm/ in.		Noon	Aftern.	
Snowfall/-Depth in/ in.		Eve.	Night	

Charlotteville (2) - 9 + 1 10
- 8
- 405.0

STATE COLLEGE, Pa. Date

JAN 17 1941

Time
0700

Max. 32.4	Wind F SW 3	Barom. t 71.0	General Obs. 0700 <input checked="" type="checkbox"/> <i>tbl 4.5" ~²</i> (3.5+1)	
Min. 20.0	Vis. km. 1	p 28.52	7 0-1 <input checked="" type="checkbox"/> 0648-0730 <input checked="" type="checkbox"/> 1245-1250	
Dry 32.0	Clouds 10 <input checked="" type="checkbox"/>	p(red.) 28.41	<input checked="" type="checkbox"/> 7 1640-1710	
Wet	Sc		≡ 1830-2030 ≡ 2030-2400	
R.H. 97		Morn. <i>overcast, lgt. rain</i>	Foren. <i>overcast</i>	
Precip. 7.0 mm/ 0.27 in.		Noon "	Aftern. " <i>to cloudy</i>	
Snowfall/-Depth in/ in.		Eve. " <i>highly fog</i>	Night " <i>foggy</i>	

Marseille (2) ⁻¹ -2 +1 3 -0.5 1.5
-2
/

	+2
	+2
	2
	+2.0
	2.0

STATE COLLEGE, Pa. Date ~~Jan 17~~ 1941

Time
1900

Max.	Wind F SW 2	Barom. t	General Obs.
Min.	Vis. km. 1	p	
Dry 34.6	Clouds 10 ≡°	p (red.)	
Wet			
R.H. 96		Morn.	Foren.
Precip. 0.3 mm/ in.		Noon	Aftern.
Snowfall/-Depth in/ in.		Eve.	Night

Conferencia (1) - 8.0 8.0

STATE COLLEGE, Pa. Date JAN 16 1926

Time 0705

Max. 37.4	Wind F W 3	Barom. t 72.0	General Obs.	
Min. 31.1	Vis. km. 5	p 28.59	☉ 0420-0450 0700 ☒ 20	
Dry 33.0	Clouds 79	p(red.) 28.48	☾ 1515-1930	
Wet	as sc			
R.H. 96		Morn. cloudy	Foren. overcast	
Precip. mm/ in.		Noon overcast	Aftern. " , drizzle	
Snowfall/-Depth in/ in.		Eve. "	Night " to cloudy	

8
-1
-4
-3
-7
-1
-1
0
5
8
-4
-3
2
1
0
3
-6
-3
+5
#

+24
Calculation = (20) - 27 + 51 78
+ 1.2 3.9

STATE COLLEGE, Pa. Date

JAN 18 1941

Time
1900

Max.	Wind F Wsw 4	Barom. t	General Obs.	
Min.	Vis. km. 3*	p		
Dry 34.6	Clouds 10 ?	p(red.)		
Wet				
R.H. 84		Morn.	Foren.	
Precip. 0.0 mm/ in.		Noon	Aftern.	
Snowfall/-Depth in/ in.		Eve.	Night	

[Melbourne] (1) ⁺⁵ +5 5 +5.0 5.0
5

STATE COLLEGE, Pa. Date JAN 19 1941

Time
0702

Max. 39.0	Wind F W 6	Barom. t 66.2	General Obs. 0700 1.2" * pt 1510-1930 * 1930-2300
Min. 19.4	Vis. km. 25	p 28.82	
Dry 19.4	Clouds 8 Sc	p (red.) 28.72	
Wet			
R.H. 65		Morn. cloudy	Foren. cloudy
Precip. 0.0 mm/ T in.		Noon "	Aftern. " to overcast snowflakes
Snowfall/-Depth in/ in.		Eve. overcast, snowflakes	Night overcast

5
[Cognate Form] (2) +10
+10
10
+5.0 5:0

STATE COLLEGE, Pa. Date

JAN 19 1944

Time
1200

Max.	Wind F W 4	Barom. t	General Obs.
Min.	Vis. km. 3+	p	
Dry 18.5	Clouds 10 *M	p(red.)	
Wet	sc		
R.H. 68		Morn.	Foren.
Precip. 0.0 mm/	in.	Noon	Aftern.
Snowfall/-Depth in/	in.	Eve.	Night

Mazatlan (7) ⁺⁷ -11 +18 29 +1.0 4.1

7
-1
-2
-1
5
-7
6

STATE COLLEGE, Pa. Date JAN 20 1941

Time
0704

Max. 21.8	Wind F W 3	Barom. t 67.5	General Obs.	
Min. 17.2	Vis. km. 40	p 29.00	0700 <input checked="" type="checkbox"/> 1.5" 1155-1205 * flakes 1615-1630 * flakes	
Dry 20.0	Clouds 9+	p (red.) 28.90		
Wet	Stc.			
R.H. 54		Morn. cloudy	Foren. cloudy	passing overcast with breaks
Precip. 0.2 mm / 0.01 in.		Noon " 1 snowflake	Aftern. cloudy to pty cloudy	
Snowfall / -Depth in / in.		Eve. pty cloudy	Night pty cloudy	

STATE COLLEGE, Pa. Date

JAN 20 1941

Time
1900

Max. 24.3	Wind F NW 2	Barom. t	General Obs.
Min.	Vis. km. 40	p	
Dry 20.3	Clouds 1	p(red.)	
Wet	sc		
R.H. 53		Morn.	Foren.
Precip.		Noon	Aftern.
	mm/ in.		
Snowfall/-Depth		Eve.	Night
	in/ in.		

+28

	Malaya	(31)	-48	+76	124	+0.9	4.0
9	-1	1					
5	-1						
8	-6						
-5	1						
-1	3						-5
1	-1	2					
3	-5	-1					+38
2	6	1					
-9	-9	4					+3.3
8	6	-4					
-2	3	1					4.3
-5		5					+2.1
3		5					
0		5					2.7
4		2					
-2							
7							
-1							
4							
3							

STATE COLLEGE, Pa. Date **JAN 21 1941**

Time
0700

Max. 24.1	Wind F W 2	Barom. t 68.5	General Obs. 0700 <input checked="" type="checkbox"/> 1.3" <input type="checkbox"/> ² <i>found after?</i>
Min. 9.9	Vis. km. 30	p 29.21	
Dry 11.5	Clouds 2	p (red.) 2911	
Wet	<i>co fil</i>		
R.H. 84		Morn. <i>pthy cloudy</i>	Foren. <i>clear</i>
Precip. 0.0 mm/ T in.		Noon <i>clear</i>	Aftern. <i>ci form, in place</i> <i>" to fair</i>
Snowfall/Depth in/ in.		Eve. <i>fair</i>	Night <i>fair</i>

STATE COLLEGE, Pa. Date

JAN 21 1944

Time
1910

Max. 32.9	Wind F WSW 1	Barom. t	General Obs.
Min.	Vis. km. 3 00 ²	p	
Dry 29.3	Clouds 1	p(red.)	
Wet	ci		
R.H. 41		Morn.	Foren.
Precip. mm/ in.		Noon	Aftern.
Snowfall/-Depth in/ in.		Eve.	Night

-20

Manzanillo (6) -27 +7 34 -3.3 5.7

4

-9

3

-9

-4

STATE COLLEGE, Pa. Date

JAN 22 1941

Time
0700

Max. 32.5	Wind F C	Barom. t 71.0	General Obs. 0700 ☒ 1.5" 0815 @ 1130 @ -12 ^h
Min. 10.2	Vis. km. 9	p 28.98	1510 @, 1520 @ -1550
Dry 19.1	Clouds 6 ci fil	p (red.) 28.87	1650 •, 1700 •, 1905 •
Wet			2200 9° - 2320
R.H. 80		Morn. rain	Foren. ^{smoky (cum, ad)} ptly cloudy to cloudy
Precip. mm/ in.		Noon high overcast	Aftern. ^(overcast) cloudy rain high overcast, lower broken
Snowfall/Depth in/ in.		Eve. overcast, rain	Night overcast, rain, drizzle

STATE COLLEGE, Pa. Date

JAN 22 1941

Time
1900

Max. 40.8	Wind F W 2	Barom. t	General Obs.
Min.	Vis. km. 3	p	
Dry 34.9	Clouds 70	p(red.)	
Wet	45		
R.H. 85		Morn.	Foren.
Precip. 1.5 mm / 0.06 in		Noon	Aftern.
Snowfall/-Depth in/ in		Eve.	Night

- [Malabar] (2) ⁺⁶ - +6 6 +3.0 3.0
2
4

STATE COLLEGE, Pa. Date **JAN 23 1941**Time
0700

Max. 43.9	Wind F WNW 3	Barom. t 71.0	General Obs. 0700 <input checked="" type="checkbox"/> 0.5"
Min. 18.0	Vis. km. 7	p 28.84	0940 <input type="checkbox"/> -0.510
Dry 38.3	Clouds 10	p(red.) 28.73	
Wet	Sc 9 as 1		
R.H. 79		Morn. overcast, shower	Foren. overcast
Precip. 2.9 mm / 0.11 in.		Noon " with passing haze	Aftern. "
Snowfall / -Depth in / in		Eve. 4	Night "

STATE COLLEGE, Pa. Date **JAN 23 1941**Time
1903

Max. 38.3	Wind F NW 3	Barom: t	General Obs.
Min.	Vis. km. 3	p	
Dry 32.7	Clouds Sc	p(red.)	
Wet			
R.H. 78		Morn.	Foren.
Precip. mm/ in.		Noon	Aftern.
Snowfall/-Depth in/ in.		Eve.	Night

-2
-1
-1
2
5
-2
-4
-4
5
-2
-7
3
-1
0
-1
-2
-2
0
-2
6
-1
-1
-5
-2
+1

Bezons

(35)

-30

-56 + 26

82

-0.9

2.3

STATE COLLEGE, Pa. Date JAN 24 1941

Time
0700

Max. 38.3	Wind F ESE 3	Barom. t 71.0	General Obs. 0700 <input checked="" type="checkbox"/> 0.3"	1400
Min. 24.5	Vis. km. 4	p 29.83	* 0655-0710 * 0710-	<input checked="" type="checkbox"/> 4.8"
Dry 24.8	Clouds 10	p(red.) 28.92	14 ^h * ^m 1705 * ^m <input checked="" type="checkbox"/>	
Wet	St h _o		1800 <input checked="" type="checkbox"/> 2300 1900 <input checked="" type="checkbox"/> 5.4"	
R.H. 77		Morn.	Foren.	
Precip. T mm/ 0.00 in.		Noon	Aftern.	
Snowfall/-Depth in/ in.		Eve.	Night	

- Matryoshka (4) ⁻²⁴ -25 + 1 26 -6.0 6.5
-7
-9

STATE COLLEGE, Pa. Date

JAN 24 1941

Time
1300

Max. 24.8	Wind F E 3	Barom. t 71.0	General Obs.	
Min.	Vis. km. 2	p 29.03		
Dry 22.1	Clouds 10	p(red.) 28.92		
Wet	HS			
R.H. 94		Morn.	Foren.	
Precip. 8.7 mm/0.1 in.		Noon	Aftern.	
Snowfall/-Depth in/ in.		Eve.	Night	

Handwritten notes and calculations in the top margin of a lined notebook page.

$23 - 26 + 64 = 90$
 $+ 38$
3.9

Barkeley (23) 7

0
1
2
3
4
5
6
7
8
9
10
11
12
13
14
15
16
17
18
19
20
21
22
23
24
25
26
27
28
29
30

STATE COLLEGE, Pa. Date

JAN 24 1941

Time
1855

Max.	Wind F ENE 3	Barom. t.	General Obs.
Min.	Vis. km. 3	p	
Dry 24	Clouds 10	p(red.)	
Wet	KS		
R.H. 93		Morn.	Foren.
Precip. 10.7 mm / 0.42 in		Noon	Aftern.
Snowfall/-Depth in/ in		Eve.	Night

$- \rho_2 \text{ find } g(9) = -18 + 6 \cdot 24 - 1.3 \cdot 2.7$
 $- \frac{1}{3} \quad \frac{1}{2} \quad 57$
 $- \frac{2}{3} \quad \frac{1}{2} \quad -5$
 $- 9 \quad \frac{1}{2} \quad +4$
 $- 2 \quad \quad \quad -1$
 $- 1 \quad \quad \quad 9$
 $- 2 \quad \quad \quad -0.2$
 $\quad \quad \quad 1.8$

Max. 26.3	Wind F NNW 4	Barom. t 20.5	General Obs. 0700 EX 5.4"/0820 *H	
Min. 20.7	Vis. km. 5	p 28.99	0905 *H 1030	
Dry 25.0	Clouds 10	p (red.) 28.88		
Wet	St			
R.H. 85		Morn. <i>single snowflakes</i>	Foren. <i>snow flurries</i>	
		<i>then overcast, snow flurries</i>	<i>overcast with breaks</i>	
Precip. 11.9 mm/0.43 in.		Noon <i>overcast to cloudy</i>	Aftern. <i>overcast with breaks</i>	
Snowfall/-Depth in/ in.		Eve. <i>with breaks</i>	Night <i>cloudy to pthly cloudy</i>	

2
 6
 -5
 -3
 0
 -6
 -4
 -3
 -8
 Bergen (9) -29 + 8
 -21
 37
 -2.5
 4.1

STATE COLLEGE, Pa. Date

JAN 25 1949

Time

1900

Max. 29.0	Wind F NW 2	Barom. t	General Obs.
Min.	Vis. km. 7	p	
Dry 27.5	Clouds 9	p(red.)	
Wet	sc		
R.H. 64		Morn.	Foren.
Precip. mm/ 0.0 in.		Noon	Aftern.
Snowfall/-Depth in/ in.		Eve.	Night

- like roots

-1	(17)
-3	
1	-19
5	+20
7	+1
0	39
0	+0.1
4	2.3
4	
1	
0	
1	
0	
1	

STATE COLLEGE, Pa. Date

JAN 26 1941

Time
0700

Max. 29.0	Wind F E 2	Barom. t 29.0	General Obs. 0700 <input checked="" type="checkbox"/> 5.1" / 1505 *°
Min. 16.4	Vis. km. 6	p 29.10	1530 *' / <input checked="" type="checkbox"/> snow 2.1"
Dry 17.1	Clouds 9	p (red.) 28.99	1800 *' 1900 *'-2
Wet	cs sc 8		2000 *° - 2400
R.H. 91		Morn. <i>partly cloudy today</i>	Foren. <i>cloudy to thin overcast</i>
Precip. + mm/ 0.0 in.		Noon <i>overcast with breaks</i>	Aftern. <i>overcast snow</i>
Snowfall / -Depth in/ in.		Eve. " <i>heavy snow</i>	Night " <i>lgt snow</i>

	9
	-1
	-7
	-7
	-1
	6
	0
	-3
	5
	-2
	2
	-6
	-2
	3
	-5
	-7
	-4
Barcelona (17)	-53 + 25
	78
	-1.6
	4.6

-28

STATE COLLEGE, Pa. Date

JAN 26 1900

Time
1900

Max. 27.3	Wind F ← 2	Barom. t	General Obs.
Min.	Vis. km. 1	p	
Dry 25.7	Clouds 10	p(red.)	
Wet	ns		
R.H. 97		Morn.	Foren.
Precip. 3.2 mm/0.12 in.		Noon	Aftern.
Snowfall/-Depth in/ in.		Eve.	Night

Loyola (4) / + 23 23 + 5.8 5.8

5
6
3
9

STATE COLLEGE, Pa. Date

JAN 27 1941

Time

0705

Max. 27.3	Wind F ESE 3	Barom. t 20.0	General Obs. *°/° 0730 0730 *° 0700 <input checked="" type="checkbox"/> 25° near } 7.8 0700 <input checked="" type="checkbox"/> 5.0 old } *° 0800-0530 0800 <input checked="" type="checkbox"/> total 9.7° near 0700 - 0.9°
Min. 16.7	Vis. km. 3	p 28.99	1400 <input checked="" type="checkbox"/> total 12.0° near since 7:00 4.9°
Dry 24.8	Clouds 10 15	p (red.) 28.88	16° *p° -1625 *° -1730-2400
Wet			1900 <input checked="" type="checkbox"/> total 11.9° near since 700 4.1°
R.H. 85		Morn. overcast, drizzle	Foren. overcast heavy to mod. ^{snow}
Precip. 6.4 mm / 0.25 in.		Noon - " mod. snow	After 1. 1900 6.5 mm 1.8" ^{snow} " " snow later light snow
Snowfall/-Depth in/ in.		Eve. " light snow	Night " occasional light snow

✓ Lisbon (2) / +12 12 +6.0 6.0

4
08

STATE COLLEGE, Pa. Date **JAN 27 1941**Time
1855

Max. 27.7	Wind F E 2	Barom. t	General Obs.
Min.	Vis. km. 3	p	
Dry 25.9	Clouds 10	p(red.)	
Wet	ns 9 fs 1		
R.H. 94		Morn.	Foren.
Precip. 5.1 mm/ in.		Noon	Aftern.
Snowfall/-Depth in/ in.		Eve.	Night

0	2	3
0	7	0
+6	0	0
-1	-7	-7
1	-3	6
6	-5	3
-5	0	-7
-4	-8	-9
3	2	2
-4	-3	-2
-7	-6	-5
-2	2	-5
-2	2	-5
-4	-4	2
3	-2	3
-3	-6	0
4	9	-5
-2	9	0

0 2 3
 0 7 0
 +6 0 0
 -1 -7 -7
 1 -3 6
 6 -5 3
 -5 0 -7
 -4 -8 -9
 3 2 2
 -4 -3 -2
 -7 -6 -5
 -2 2 -5
 -2 2 -5
 -4 -4 2
 3 -2 3
 -3 -6 0
 4 9 -5
 -2 9 0

-53

(59)

3a + 2a + 1a

-150 +77 207 -0.9 3.5

STATE COLLEGE, Pa. Date

JAN 28 1943

Time

0700

Max. 27.5	Wind F WSW 2	Barom. t 70.5	General Obs. 0700 12.3
Min. 22.7	Vis. km. 4	p 29.00	* ⁰⁻¹ 0000-0340 / * / 0340-0700
Dry 23.0	Clouds 10	p (red.) 28.89	0800-1000 (* fl) * fl 1045-12 ^h
Wet	ns		
R.H. 94		Morn. <i>intermittent lgt.</i> <i>overcast snow</i>	Foren. <i>interm. snow flakes</i> <i>overcast with breaks</i>
Precip. 5.9 mm / 0.23 in.		Noon "	Aftern. <i>cloudy (cs, floc, cc, pc)</i>
Snowfall/-Depth in/ in.		Eve. "	Night <i>overcast with breaks</i>

Be Mass (1) ⁺² +2 2 +2.0 2.0

STATE COLLEGE, Pa. Date **JAN 28 1946**

Time

Max. 31.3	Wind F NW 3	Barom. t	General Obs.
Min.	Vis. km. 6	p	
Dry 27.5	Clouds 10	p(red.)	
Wet	Sc		
R.H. 65		Morn.	Foren.
Precip. 0.1 mm/0.004 in.		Noon	Aftern.
Snowfall/-Depth in/ in.		Eve.	Night

0
 5
 -2
 -1
 1
 0
 -6
 6
 -3
 -9
 -9
 -3
 0
 9
 -2
 3
 -1
 -1
 2
 -2
 -1
 -1
 -4
 -4

Grade (28)

-18
 -51 + 33 84 -0.6 3.0

STATE COLLEGE, Pa. Date **JAN 29 1941**Time
0700

Max. 31.3	Wind F WNW 3	Barom. t 70.5	General Obs. 0700 <input checked="" type="checkbox"/> 16.8"
Min. 22.5	Vis. km. 3	p 28.90	0800 *°-10°/*°/10-1930
Dry 24.6	Clouds 10	p (red.) 28.79	
Wet	SI		
R.H. 86		Morn. overcast, lgt. snow	Foren. cloudy, snowflurries
Precip. T mm/0.06 in.		Noon cloudy interm. * flurries	Aftern. partly, clearing cloudy interm. * flurries
Snowfall, -Depth in/ in.		Eve. ptly cloudy	Night ptly cloudy to cloudy

1
4
Borrows (3) - 6 + 5
- 1
11 - 0.3 3.7

STATE COLLEGE, Pa. Date

JAN 29 1941

Time

1900

Max. 30.7	Wind F W 4	Barom. t	General Obs.	
Min.	Vis.km. 35	p		
Dry 29.8	Clouds < 1	p(red.)		
Wet	fr. cv.			
R.H. 55		Morn.	Foren.	
Precip. 0.0 mm/ in.		Noon	Aftern.	
Snowfall/-Depth in/ in.		Eve.	Night	

$\text{Lemberg } (4) = 16 \quad -16 \quad 16 \quad -4.0 \quad 4.0$
-6
-8
-1
-3
-
+1
+1
1
+1.0
1.0

STATE COLLEGE, Pa. Date

JAN 30 1941

Time
0700

Max. 30.7	Wind F WSW 2	Barom. t 69	General Obs. 0700 9.2 9.2" 11" (9) * -1230
Min. 22.1	Vis. km. 3	p 28.69	1540 * fl
Dry 24	Clouds 10	p(red.) 28.59	1900 * fl 1
Wet	sc		2000 *!
R.H. 80			2200 * ^o -2400
		Morn. overcast	Foren. * fl. overcast frozen drizzle
Precip. Tr mm/Tr. in.		Noon " * fl (9)	Aftern. more flurries overcast overcast with tracks
Snowfall/-Depth in/ in.		Eve. cloudy lgt snow	Night interm. lgt snow cloudy to overcast

STATE COLLEGE, Pa. Date

JAN 30 1941

Time
1701

Max. 29.50	Wind F WNW 5	Barom. t	General Obs.	
Min.	Vis. km. 6	p		
Dry 29.3	Clouds 9	p(red.)		
Wet	sc			
R.H. 75		Morn.	Foren.	
Precip. Tr mm/ in.		Noon	Aftern.	
Snowfall/-Depth in/ in.		Eve.	Night	

+ 2
 - Pa Plata (37) - 6.1 + 63 124 + 0.1 3.3

8	-3	-2	
-6	-2	-1	
3	3		
4	6		
-2	2	-8	-87
8	6	-6	+7
-6	2	-1	
-6	2	1	-80
-4	0	-8	
3	4	-2	94
-1	1	-3	
4	0	-7	-4.0
-3	-3	-7	
4	1	-4	4.7
-7	2	0	
-1	0	6	
-3	-3	-6	
-3		-7	
-2		-3	
-6		-9	

STATE COLLEGE, Pa. Date

JAN 31 1941

Time
0700

Max. 31.5	Wind F NW 5	Barom. t 68	General Obs. 0700 2.5 * μ \rightarrow 1700
Min. 24.1	Vis. km. 8	p 28.68	old 9.2 new 9.3
Dry 31.5	Clouds 10	p(red.) 28.58	0000 * $^{\circ}$ -730
Wet	Sc		0730/* $^{\circ}$ / till 1040 \rightarrow
R.H. 76		Morn. <i>drifting snow, light snow</i> overcast <i>to moderate snow showers</i>	Foren. <i>interim snow showers</i> overcast later cloudy
Precip. T mm / T in.		Noon <i>in dry cc</i> cloudy <i>in cc</i>	Aftern. cloudy
Snowfall/-Depth in/ in.		Eve. ptly cloudy	Night ptly cloudy to cloudy

- La Curiosa (1) ⁻⁴ / 4 -4.0 4.0

STATE COLLEGE, Pa. Date

JAN 31 1941

Time
1900

Max. 33.2	Wind F NW 3	Barom. t	General Obs.
Min.	Vis. km. 8	p	
Dry 23.6	Clouds 4	p(red.)	
Wet	sc f.c.		
R.H. 60		Morn.	Foren.
Precip. 0.1 mm/ 0.0 in		Noon	Aftern.
Snowfall/-Depth in/ in		Eve.	Night

-1
0
+3
-6
-5
-3
-1
8
-5
0
-8
-2
6
-5
-4
2
-2

Athens (20) -64 +20 84 -22 4.2

-44