

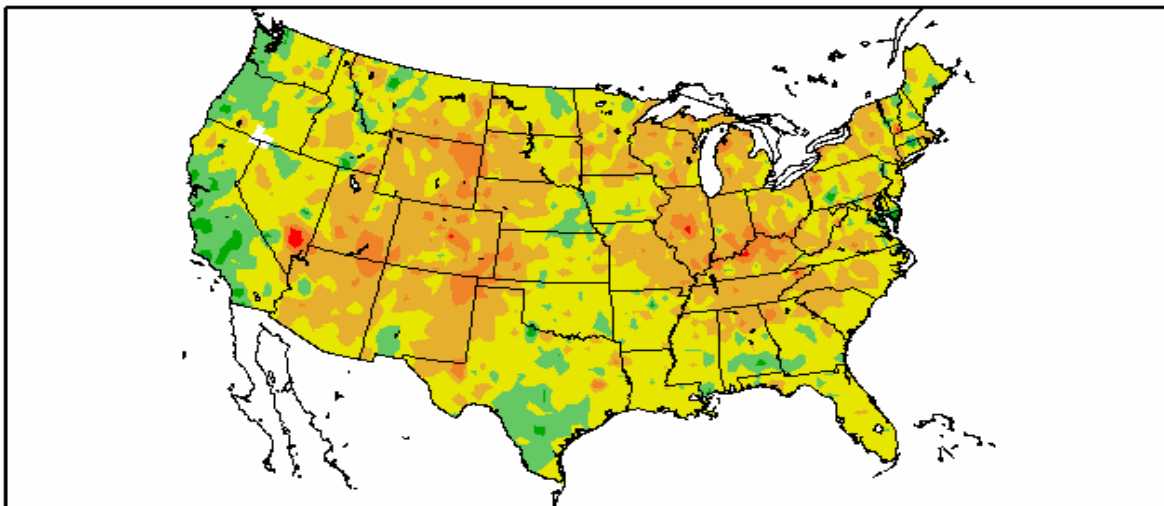
The Pennsylvania Observer



Outlook

Experimental Long Range Outlook for Pennsylvania: October 2007 – November 2007

Departure from Normal Temperature (F)
9/1/2007 – 9/24/2007

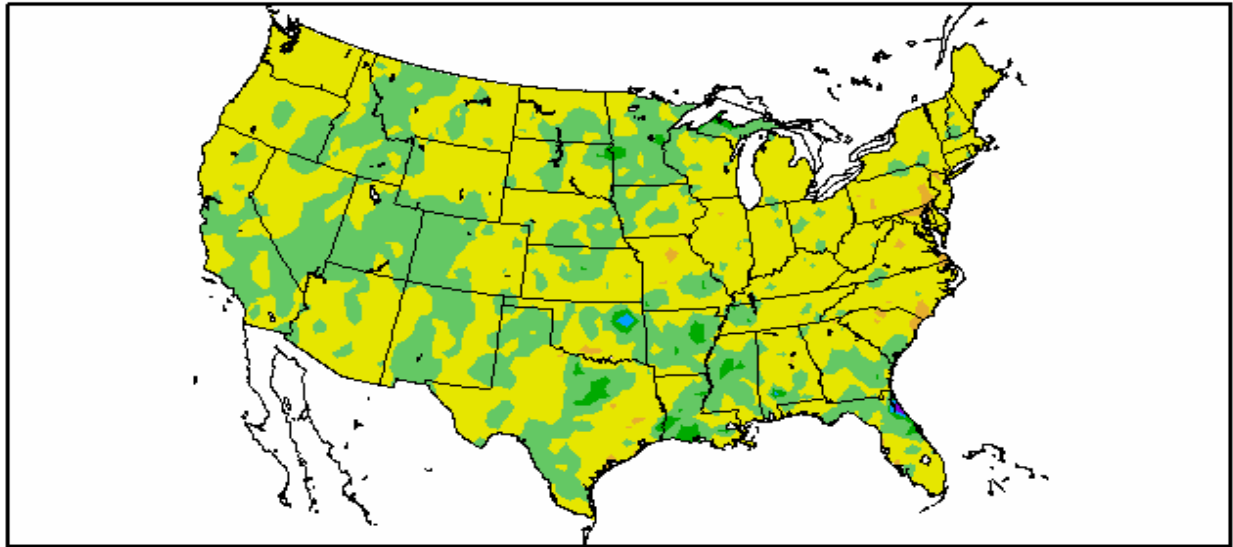


Generated 9/25/2007 at HPRCC using provisional data.

NOAA Regional Climate Centers

The significant temperature departures for September can be found in the eastern and central Rockies as well as the lower Ohio Valley. Cool dominated California.

Departure from Normal Precipitation (in)
9/1/2007 - 9/25/2007



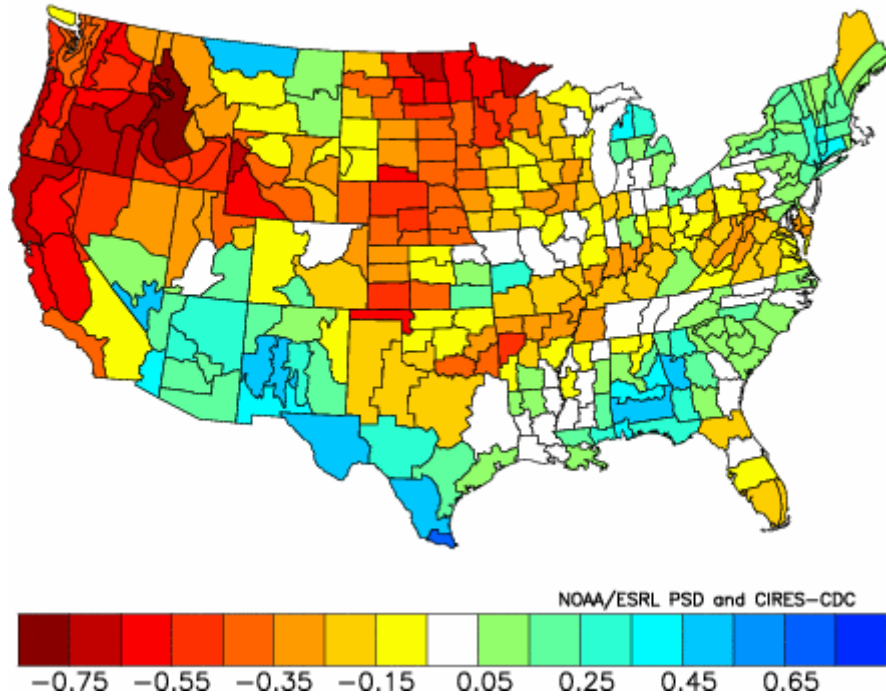
Generated 9/26/2007 at HPRCC using provisional data.

NOAA Regional Climate Centers

The nation northeast in a V from Memphis was exceptionally dry. The upper northern Plains and parts of the Gulf Coast were moist.

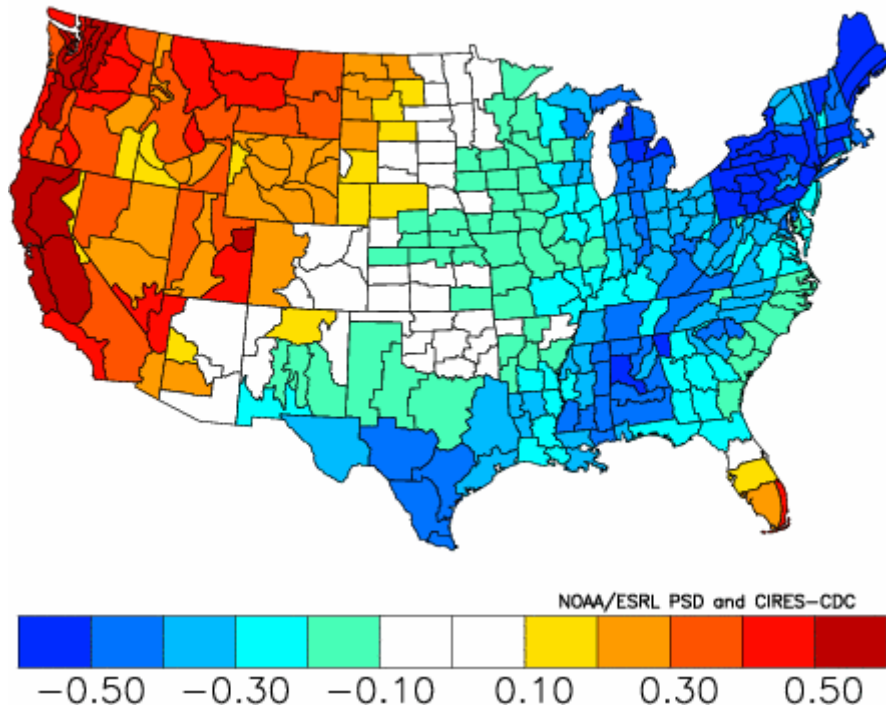
Analog Years: **1914 1943 1958 1969 1907 1966 1974 1978 1986 1987 1989 1992 1989 1992**

Composite Standardized Precipitation Anomalies
Versus 1895–2000 Longterm Average
Oct to Nov 1914,1943,1958,1969,1907,1966,1974,1978,1986,1987
1989,1992,1989,1992



There are no nationwide precipitation trends indicated by this map though it does call for an exceptionally dry Pacific Coast and western Great Lakes. Areas along the Mexican border, as well as parts of New England could see a little bit more rain than usual in the coming months.

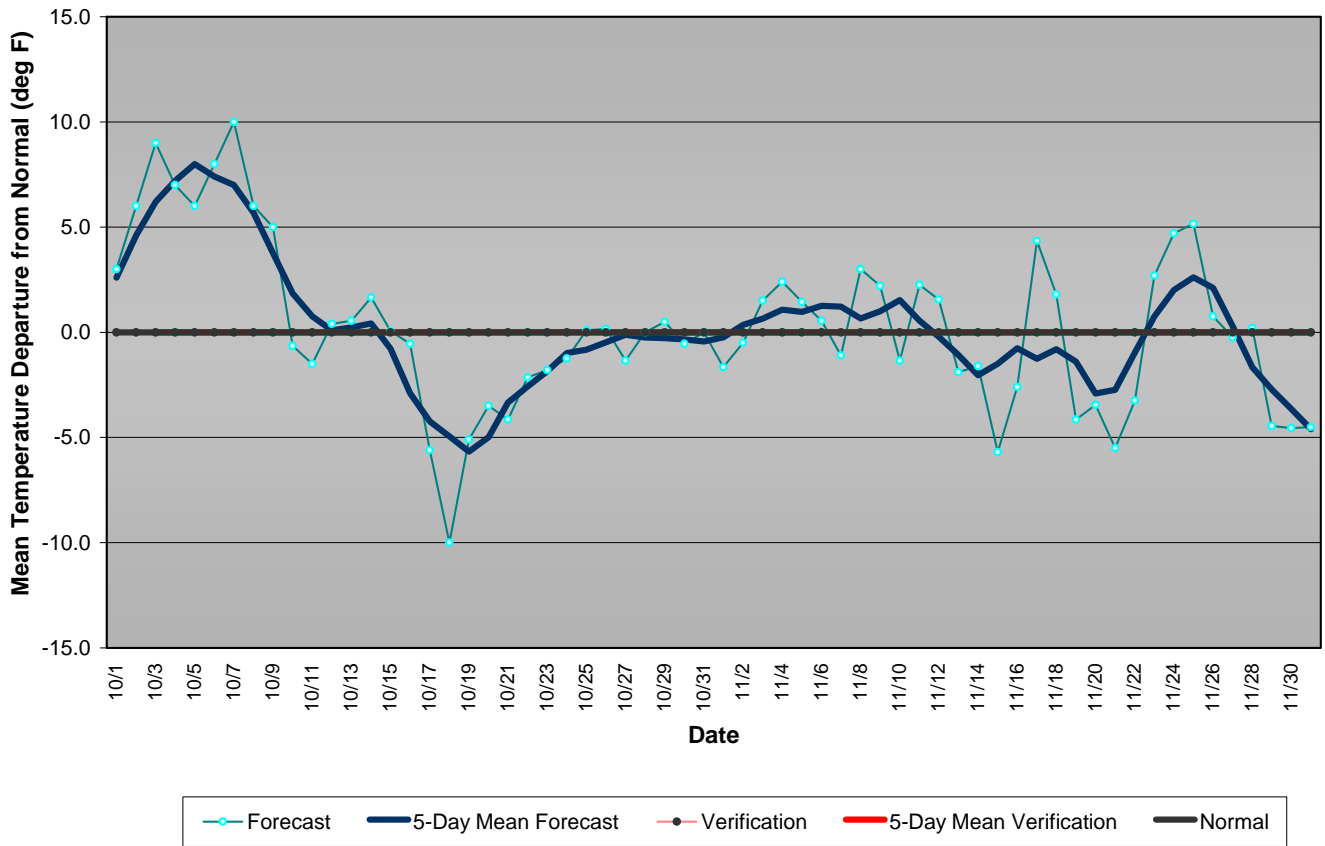
Composite Standardized Temperature Anomalies
Versus 1895–2000 Longterm Average
Oct to Nov 1914,1943,1958,1969,1907,1966,1974,1978,1986,1987
1989,1992,1989,1992



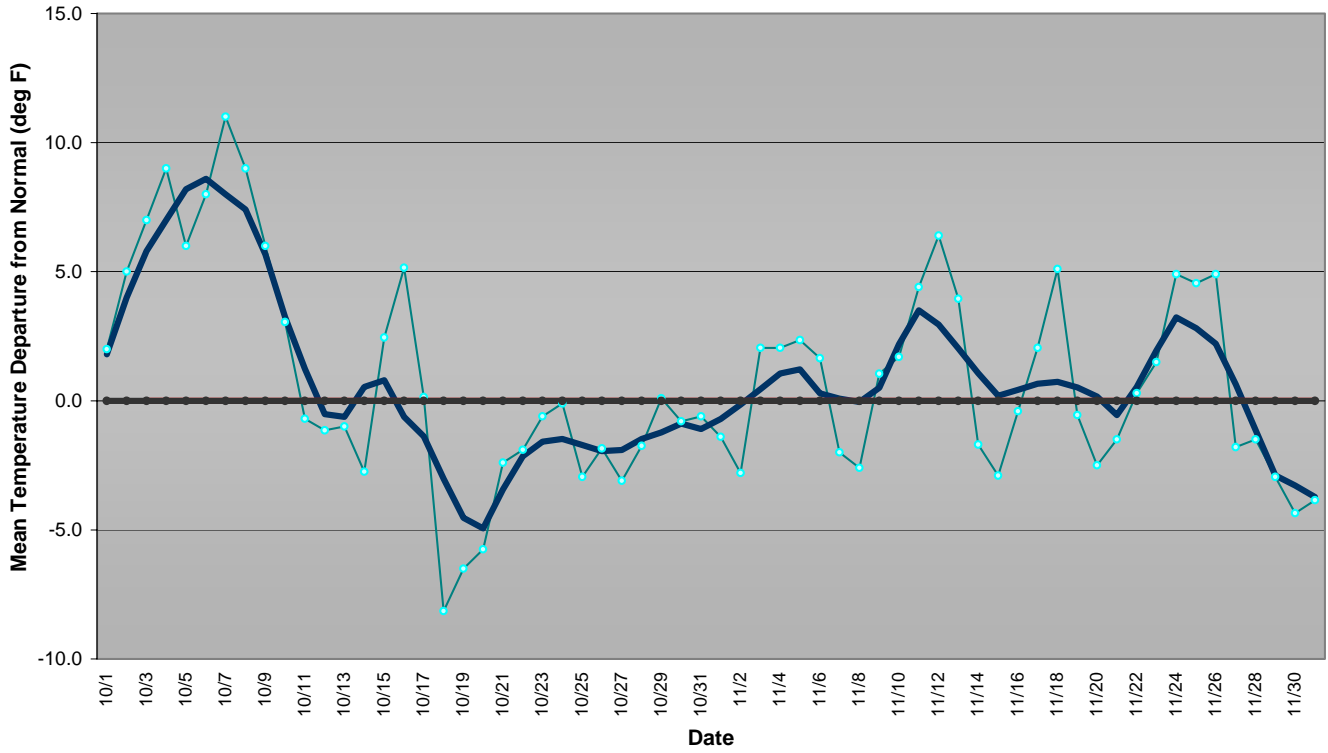
The forecast here calls for exceptionally cold temperatures for the eastern half of the country, particularly east of the Mississippi and into the Mid-Atlantic and New England. However, once you move west of the Rocky Mountains, things could get much warmer than usual in October and November.

Applying those same analog years produced the following daily departures from normal for three regions of Pennsylvania for the period from October 1 – November 30.

Western Pennsylvania Temperature Forecast October - November 2007



Central Pennsylvania Temperature Forecast October - November 2007



Eastern Pennsylvania Temperature Forecast October - November 2007

