

The Pennsylvania Observer



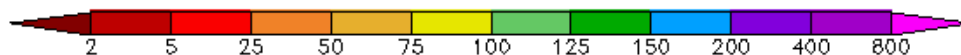
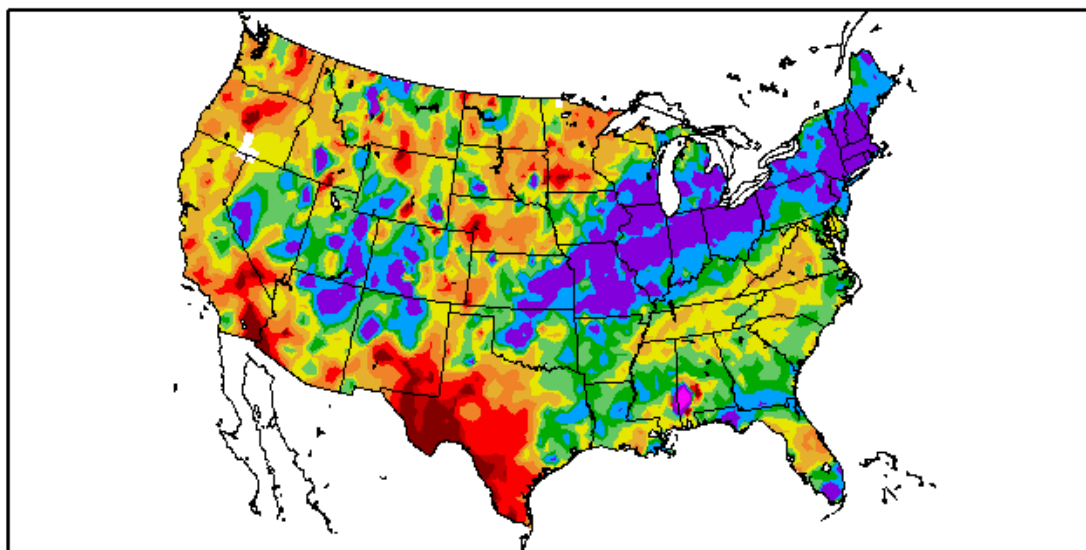
Outlook

Experimental Long Range Outlook for Pennsylvania: March – April 2008

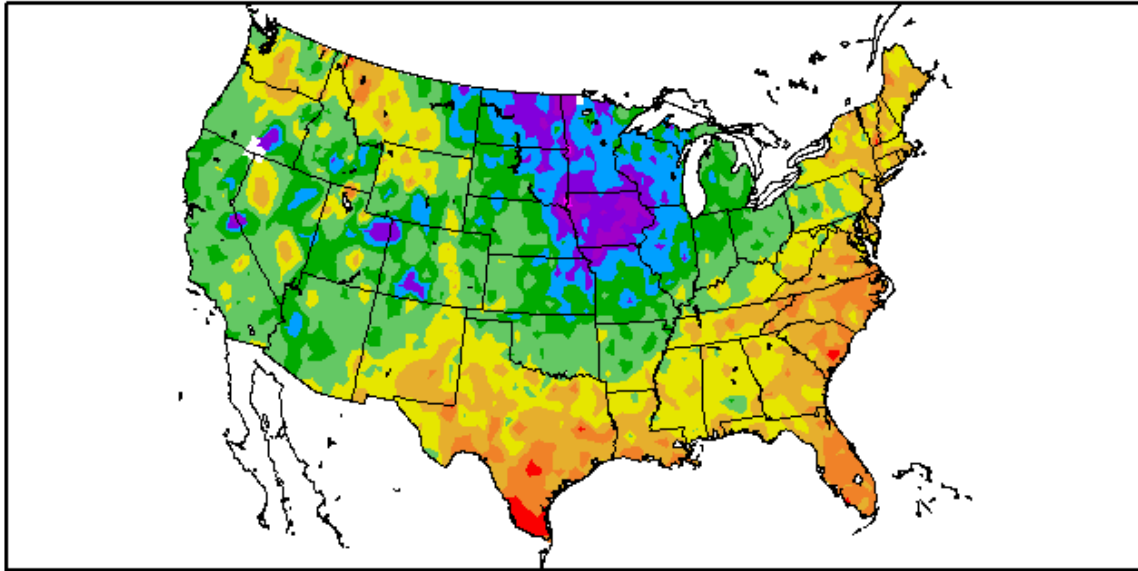
Prepared by Ashley Smith & Eric Wertz

The February departures from normal for the United States showed a cold anomaly in the Plains and upper Midwest. It was quite warm from south Texas to across the Gulf States and along the East Coast. Precipitation was well above average from the southern Plains to New England as well as near the Gulf Coast and over parts of the central Rockies. A dry swath occurred in the Tennessee Valley and over the Mid-Atlantic region.

Percent of Normal Precipitation (%)
2/1/2008 – 2/28/2008



Departure from Normal Temperature (F)
2/1/2008 - 2/28/2008



Generated 2/29/2008 at HPRCC using provisional data.

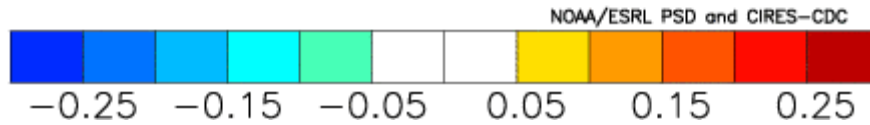
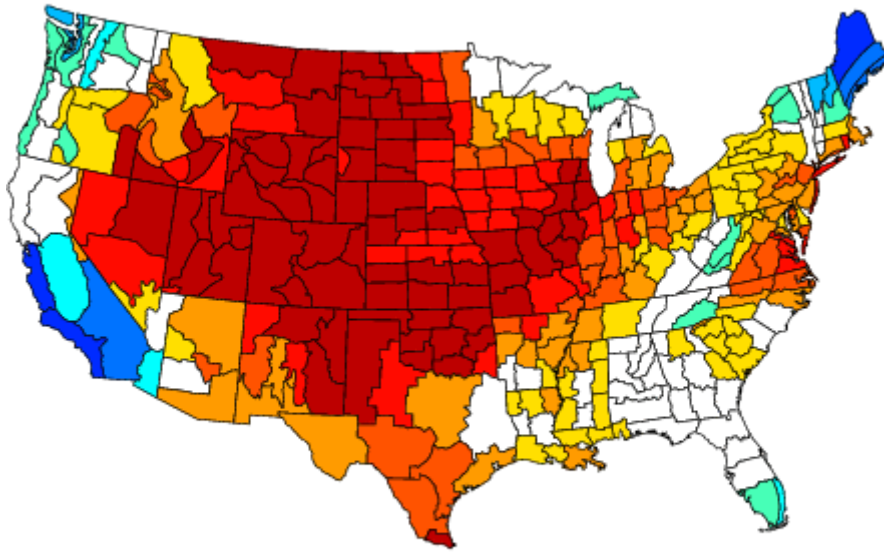
NOAA Regional Climate Centers

The anomalies listed above were used to construct an analog based on the best matches of divisional data: There were the years that had the closest matches:

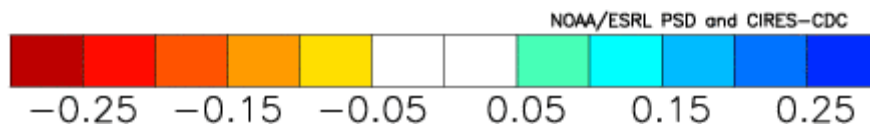
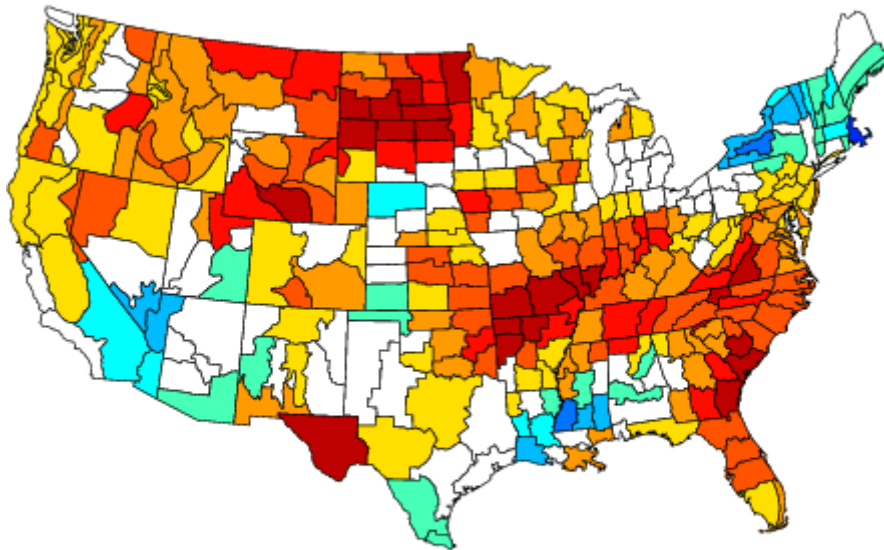
1925 1930 1938 1939 1949 1954 1956 1957 1976 1992 1999 2001

The following are the composite anomalies for the month of March across the country. This outlook runs contrary to the classic La Nina March conditions which favor chilly weather in the eastern half of the nation.

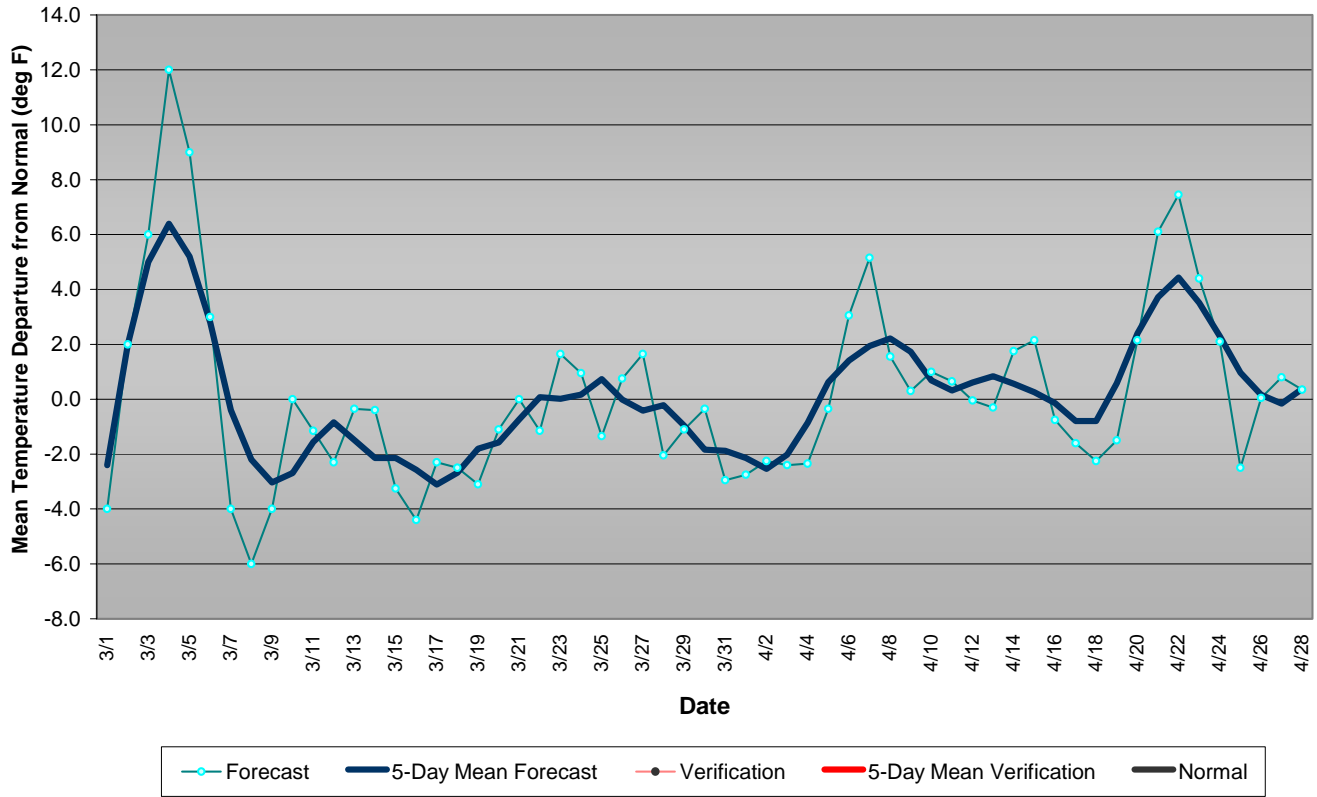
Composite Standardized Temperature Anomalies
Versus 1895–2000 Longterm Average
Mar 1925,1930,1938,1939,1949,1954,1956,1957,1976,1992
1999,2001



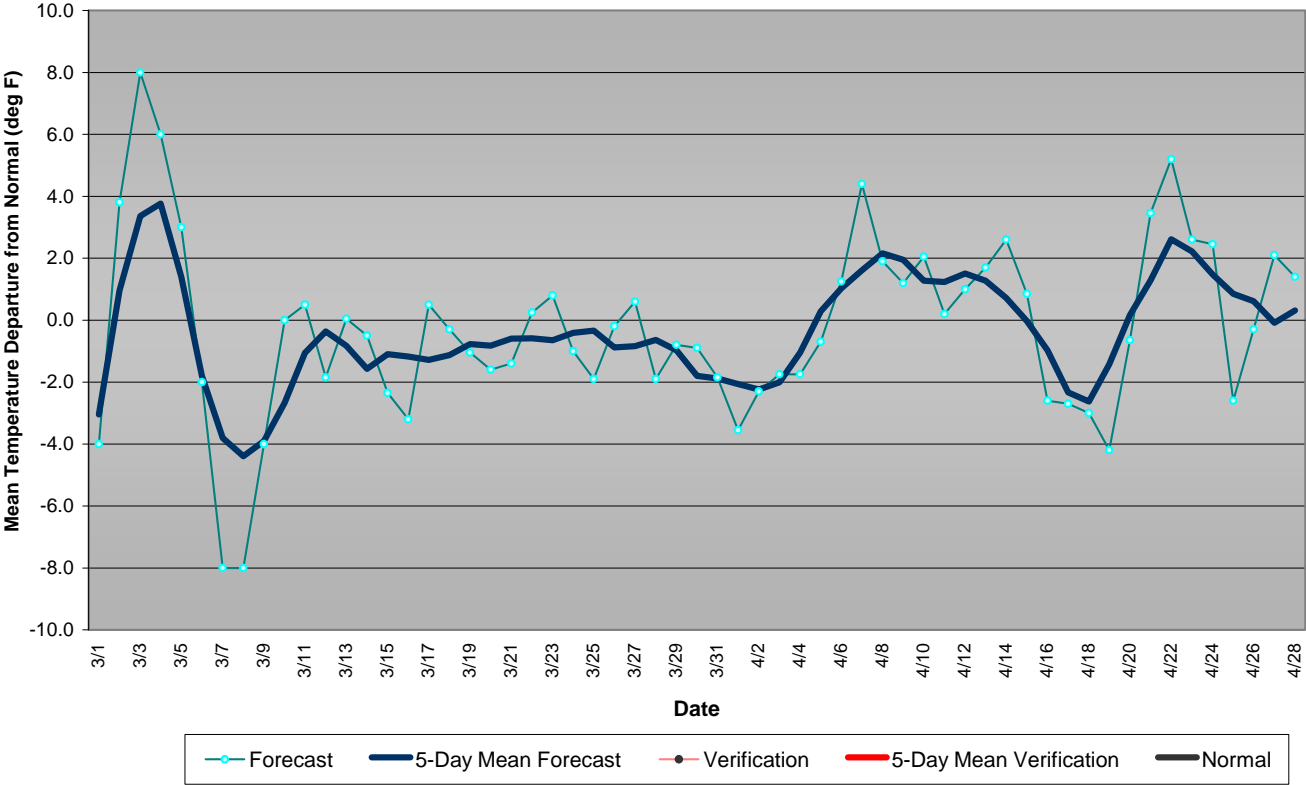
Composite Standardized Precipitation Anomalies
Versus 1895–2000 Longterm Average
Mar 1925,1930,1938,1939,1949,1954,1956,1957,1976,1992
1999,2001



Eastern Pennsylvania Temperature Forecast March-April 2008



Central Pennsylvania Temperature Forecast March-April 2008



Western Pennsylvania Temperature Forecast March-April 2008

