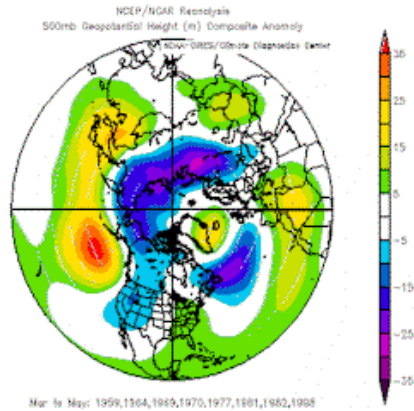


The Pennsylvania Observer

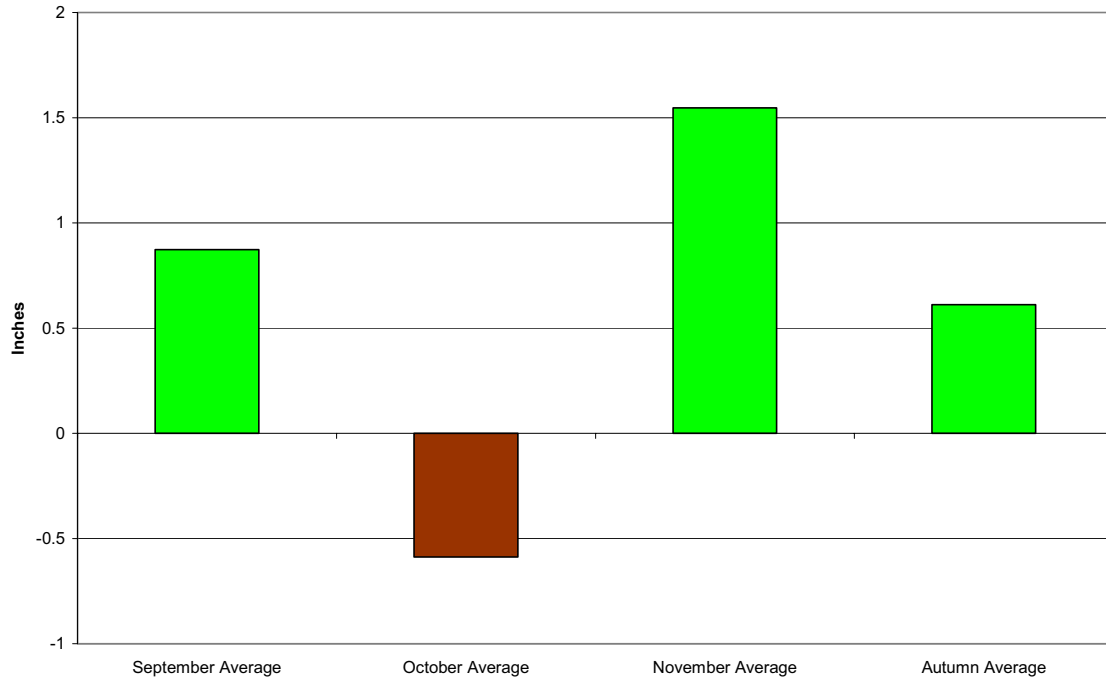
The Pennsylvania State Climatologist



August Climate Highlight:

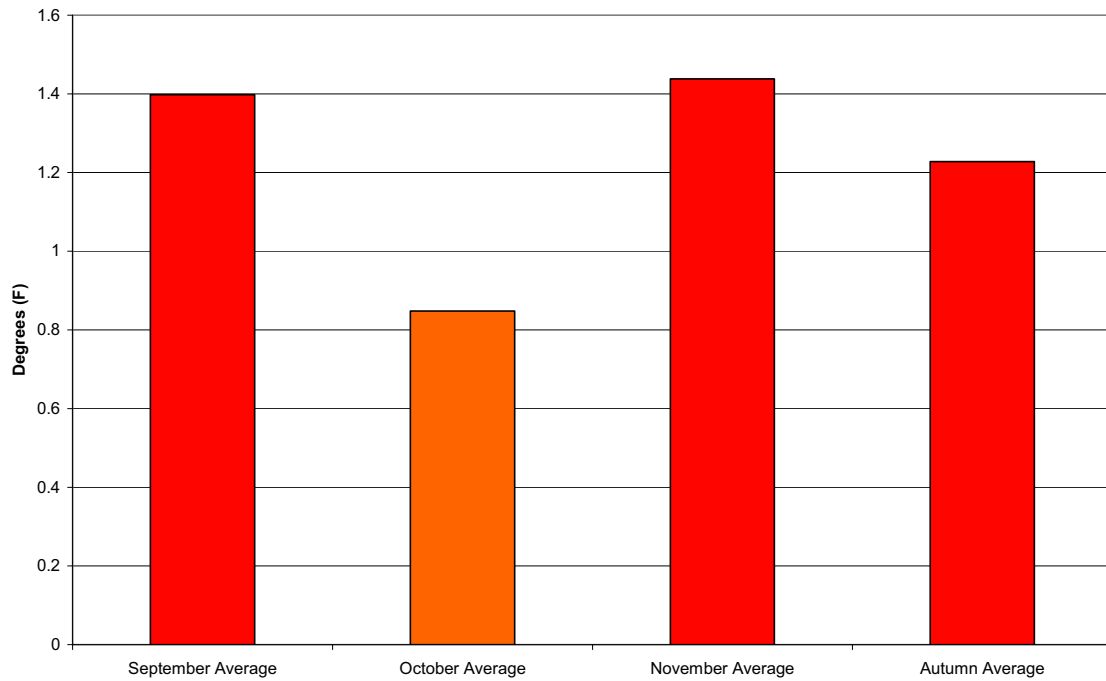
Comparing the common years (**1926, 1941, 1985, 1992, 2004**) when there was a warmer than average June-July in Idaho, a wet start to the year (January-July) in Texas, and dry March, April, and May for Alabama indicates definite patterns for Pennsylvania climate in the fall as indicated by the graphs below.

Precipitation Departure from Normal



Overall, the trend indicates that this fall will be a little wetter than usual with November being particularly soggy.

Temperature Departures from Normal



This indicates that the coming fall should be a bit warmer than normal, staying a degree above the normal for much of September, October and November.