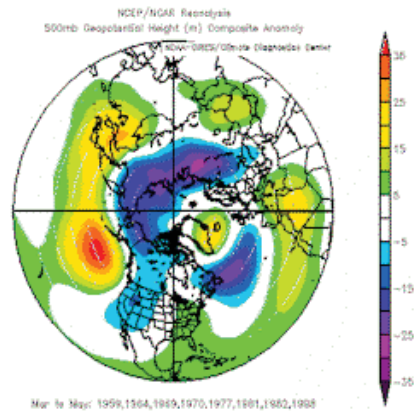


The Pennsylvania Observer

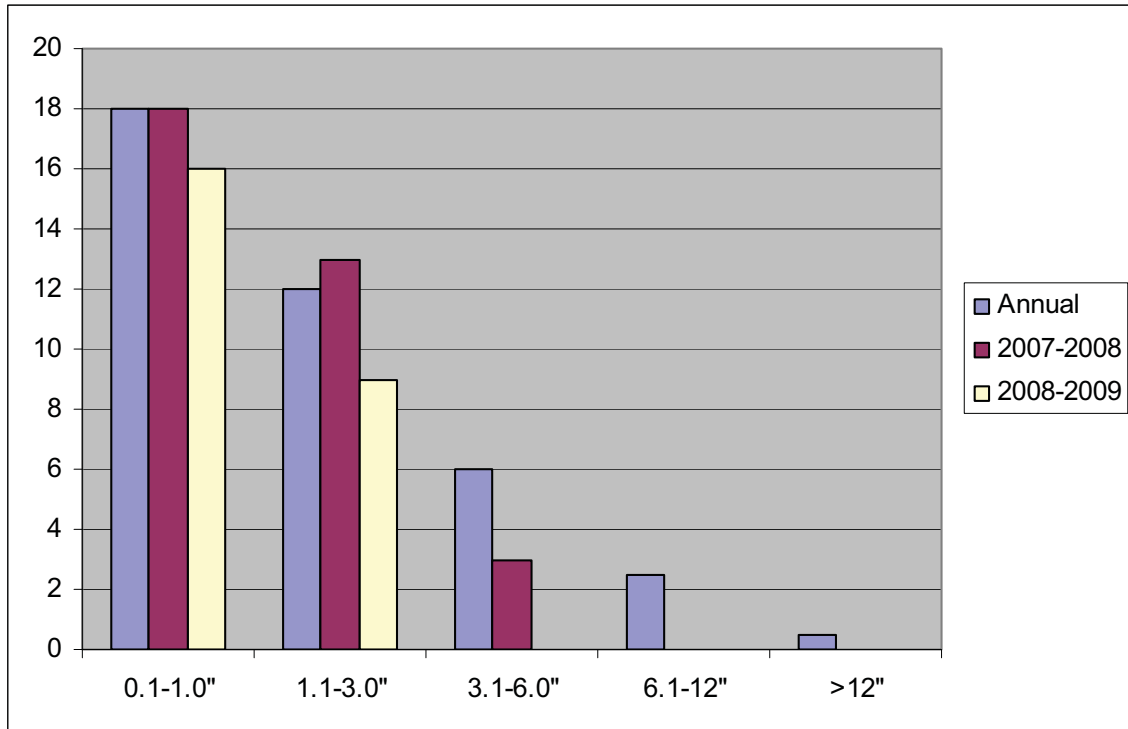
The Pennsylvania State Climatologist



February Climate Highlight:

This climate highlight compares the snowfall in the 2007-2008 winter season to that of the present 2008-2009 season. It also shows the distribution of icing events. Interestingly, in central Pennsylvania there have been no 24 hour snowfalls greater than 6 inches in more than two years, but the frequency of icing events has considerably increased.

Comparison of Snowfall



In comparing the normal distribution of snowfall (by events) in State College, (the left most bar) with last winter's snowfall distribution and this season to date, it is noted that there have been no 24 hour snowfalls greater than 6 inches in more than two years.

Total number of hours of ZR or UP

December

Day	KFIG	KBFD	KDUJ	KUNV
11	7	0	2	18
12	0	0	0	3
16	1	0	3	1
17	3	3	2	9
19	6	4	6	2
24	6	1	4	8
Total	23	8	17	41

The counterpart to the lack of substantial snow in the central valleys of the state is the increased frequency of icing events. The above chart shows the total number of hours of freezing rain and unknown precipitation type during the month of December 2008 at several regional airports. Clearfield (KFIG) reported 23 hours while the University Park airport registered a total of 41 hours, with 18 of those occurring on one day.