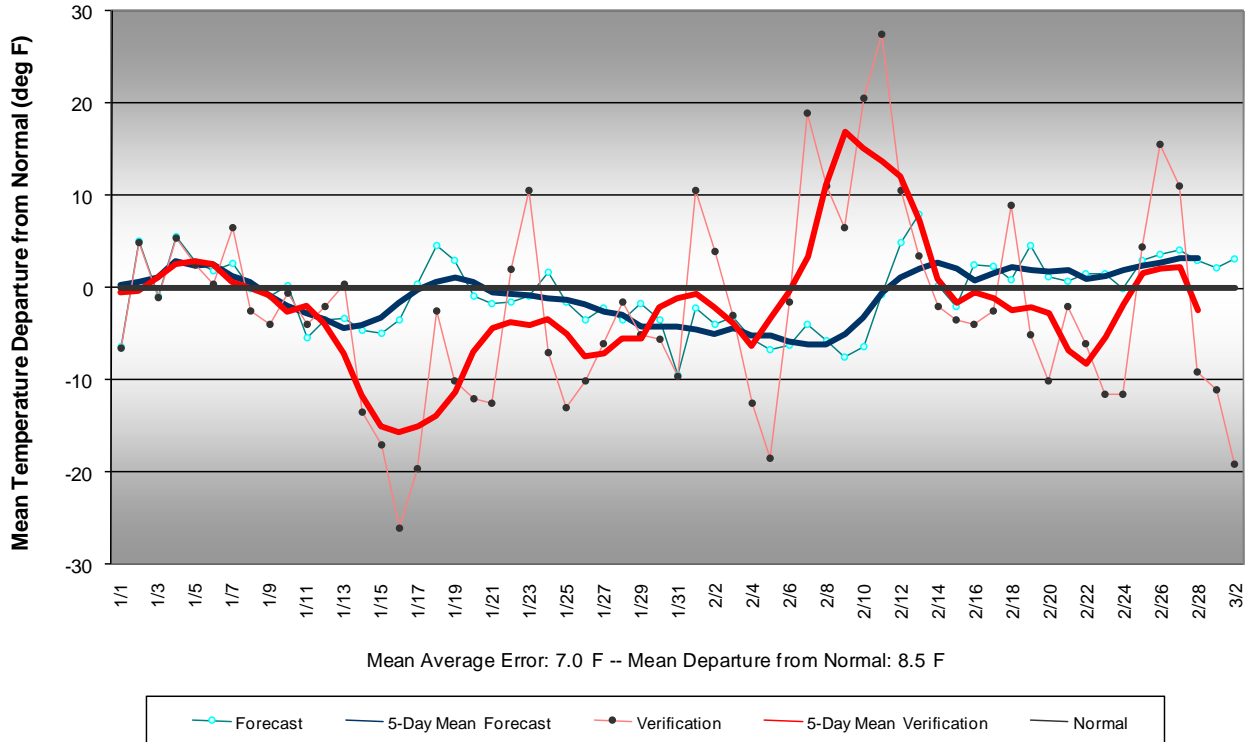
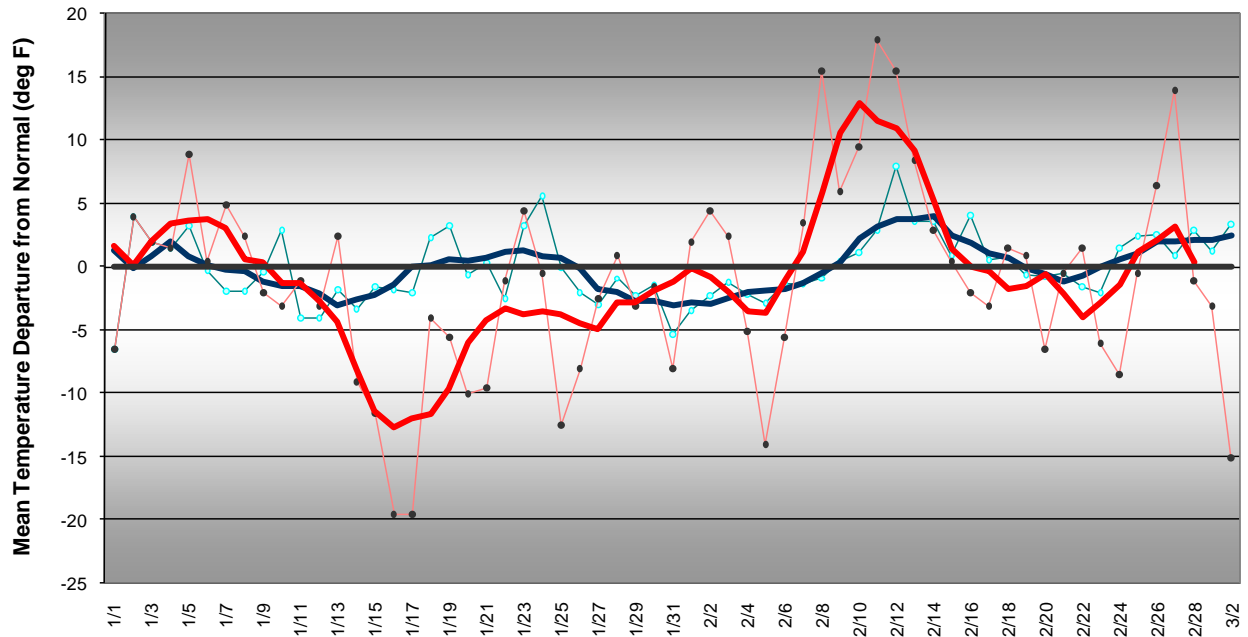


# Long Range Forecast: January – February 2009

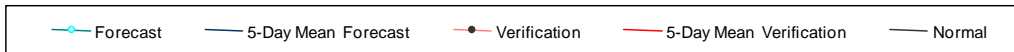
## Western Pennsylvania Temperature Forecast January - February 2009



### Central Pennsylvania Temperature Forecast January - February 2009



Mean Average Error: 3.8 F -- Mean Departure from Normal: 6.9 F



### Eastern Pennsylvania Temperature Forecast January - February 2009

