

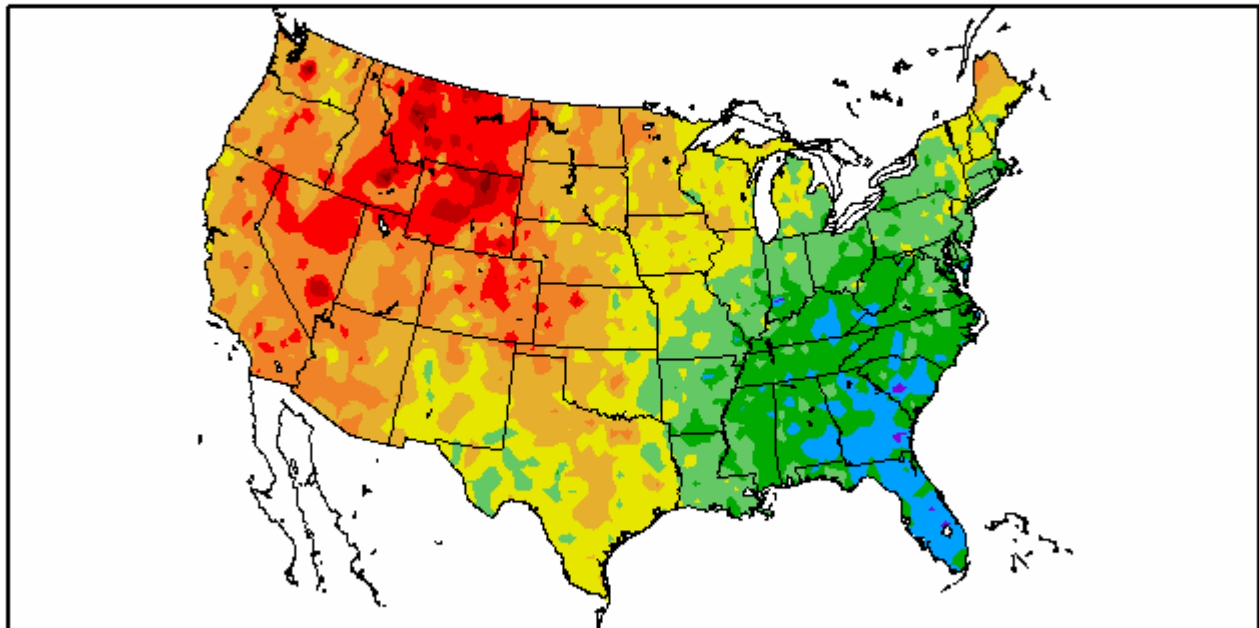
The Pennsylvania Observer



Outlook

Experimental Long Range Outlook for Pennsylvania: December 2008 – January 2009

Departure from Normal Temperature (F)
11/1/2008 – 11/30/2008



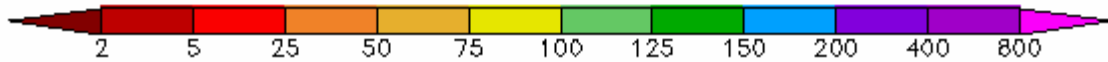
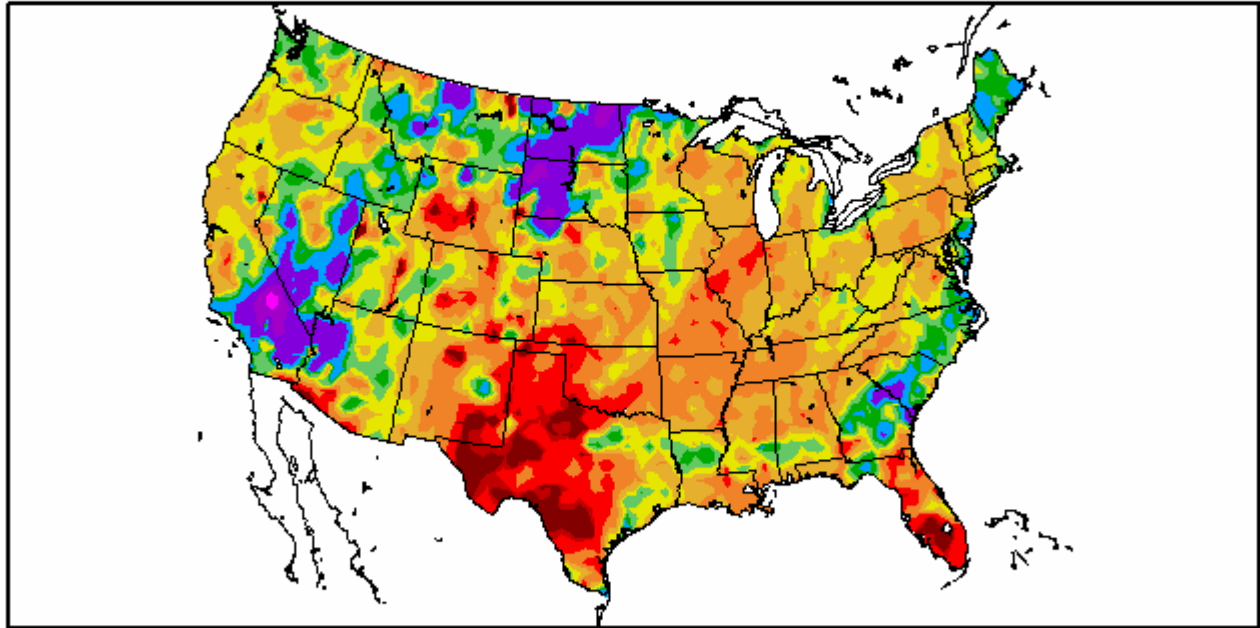
Generated 12/1/2008 at HPRCC using provisional data.

NOAA Regional Climate Centers

Much of the southeastern United States remained on the chilly side during the month of November. In contrast, states in the northwestern tier such as Montana and Wyoming experienced above average temperatures. A deep upper level trough dominated the eastern half of the United States throughout November, causing temperatures to fall below the average mark for the month.

Percent of Normal Precipitation (%)

11/1/2008 - 11/30/2008



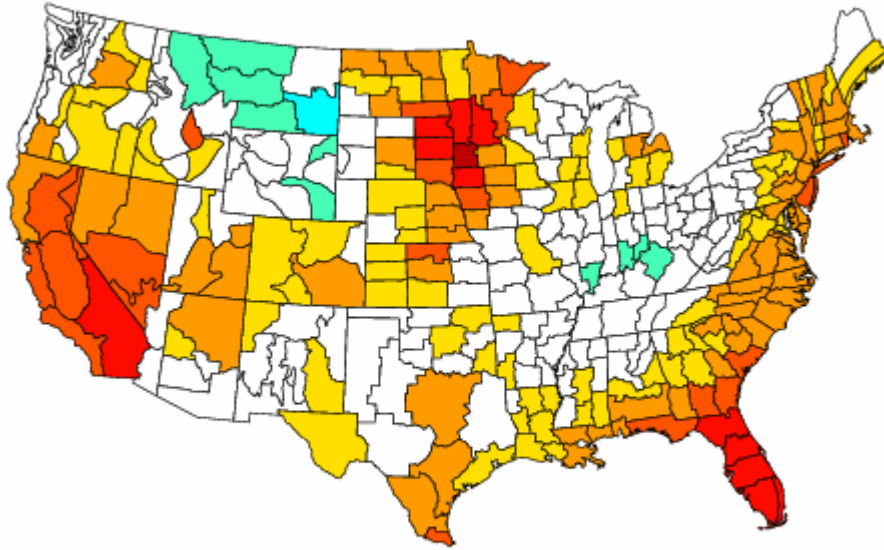
Generated 12/1/2008 at HPRCC using provisional data.

NOAA Regional Climate Centers

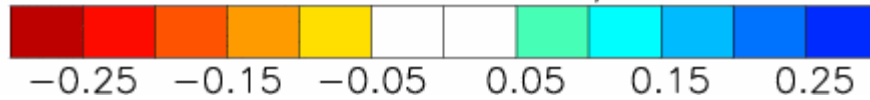
Rainfall was well below average across much of the country, with exceptions in southern California, the southeastern coastal states, and the Dakotas. The above average precipitation in the Dakotas is largely due to the blizzard that struck the area in early November.

Composite Standardized Precipitation Anomalies Versus 1895–2000 Longterm Average

Dec to Jan 1917–18, 1962–63, 1932–33, 1904–05, 1949–50, 1954–55, 1970–71, 1939–40
1944–45, 1923–24,

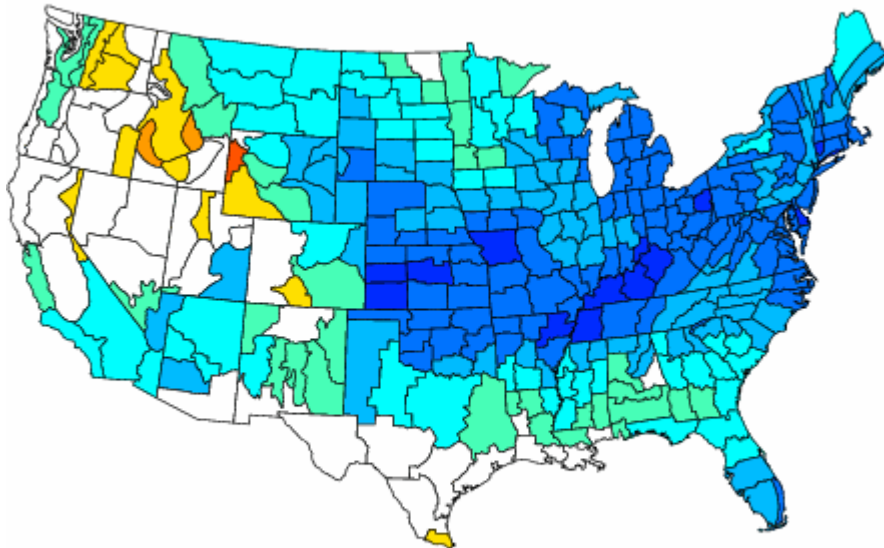


NOAA/ESRL PSD and CIRES–CDC

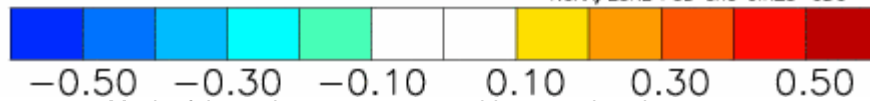


Composite Standardized Temperature Anomalies Versus 1895–2000 Longterm Average

Dec to Jan 1917–18, 1962–63, 1932–33, 1904–05, 1949–50, 1954–55, 1970–71, 1939–40
1944–45, 1923–24,

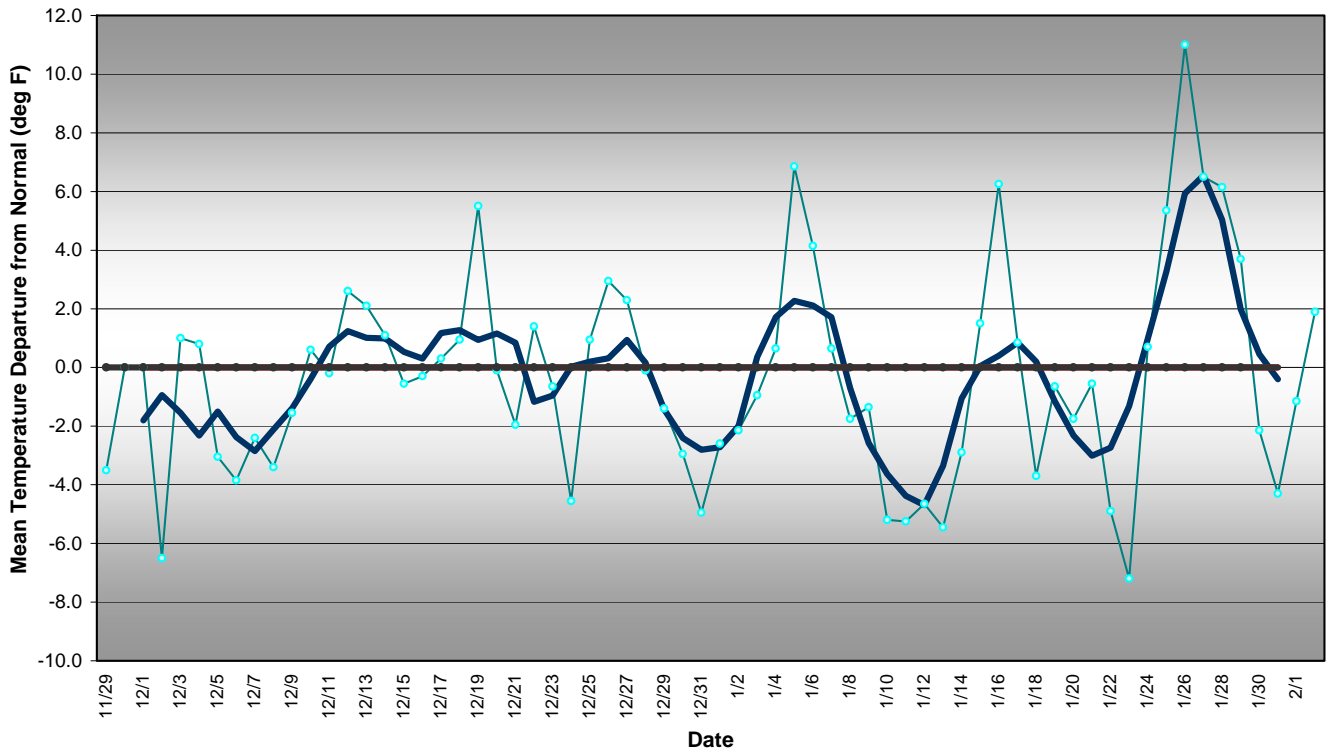


NOAA/ESRL PSD and CIRES–CDC

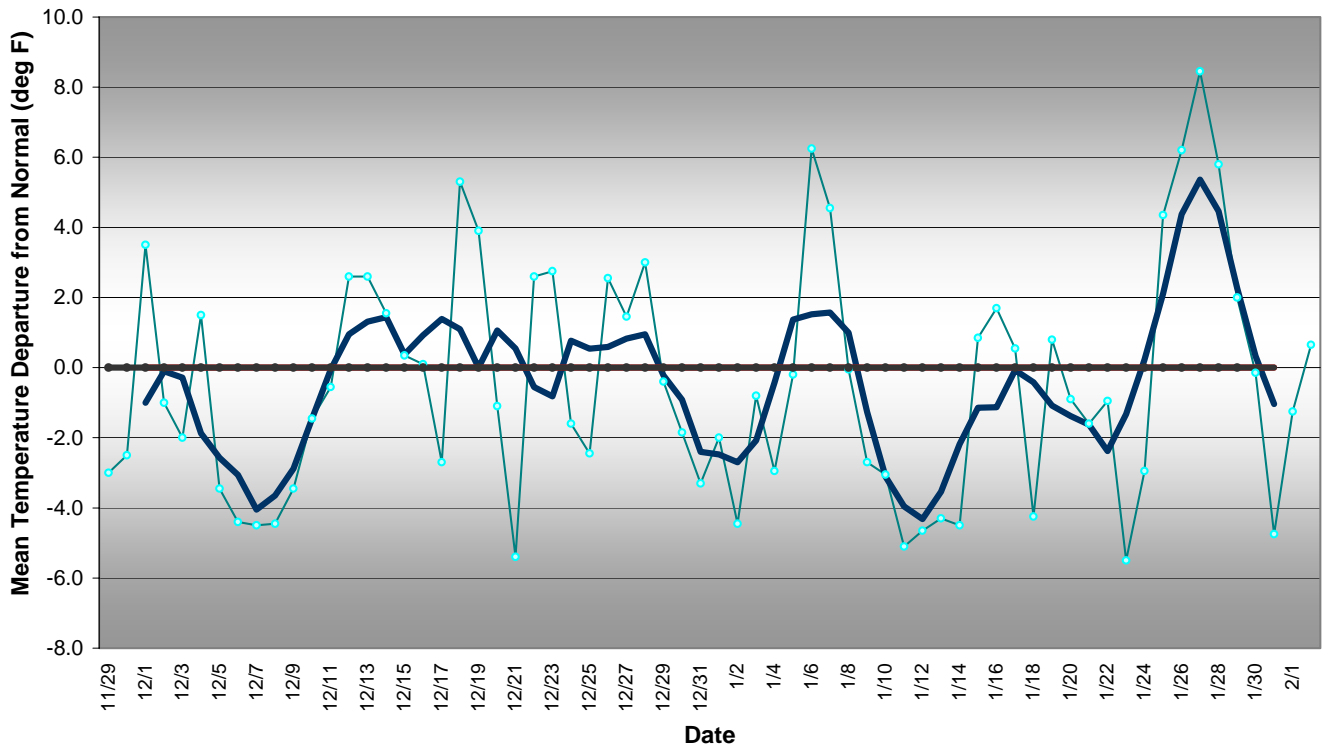


Much of the nation can expect a cold start to the winter season.

Western Pennsylvania Temperature Forecast December 2008 - January 2009



Central Pennsylvania Temperature Forecast December 2008 - January 2009



Eastern Pennsylvania Temperature Forecast December 2008 - January 2009

