

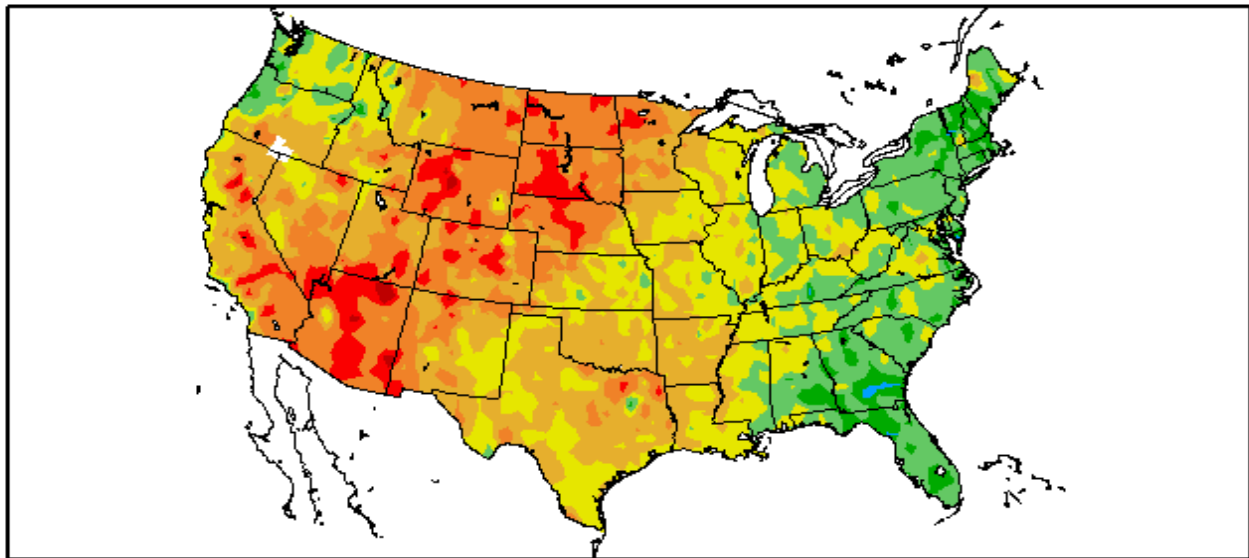
The Pennsylvania Observer



Outlook

Experimental Long Range Outlook for Pennsylvania: December 2007 – January 2008

Departure from Normal Temperature (F)
11/1/2007 – 11/27/2007

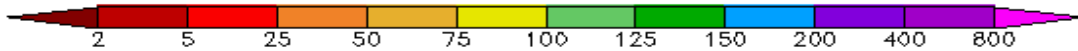
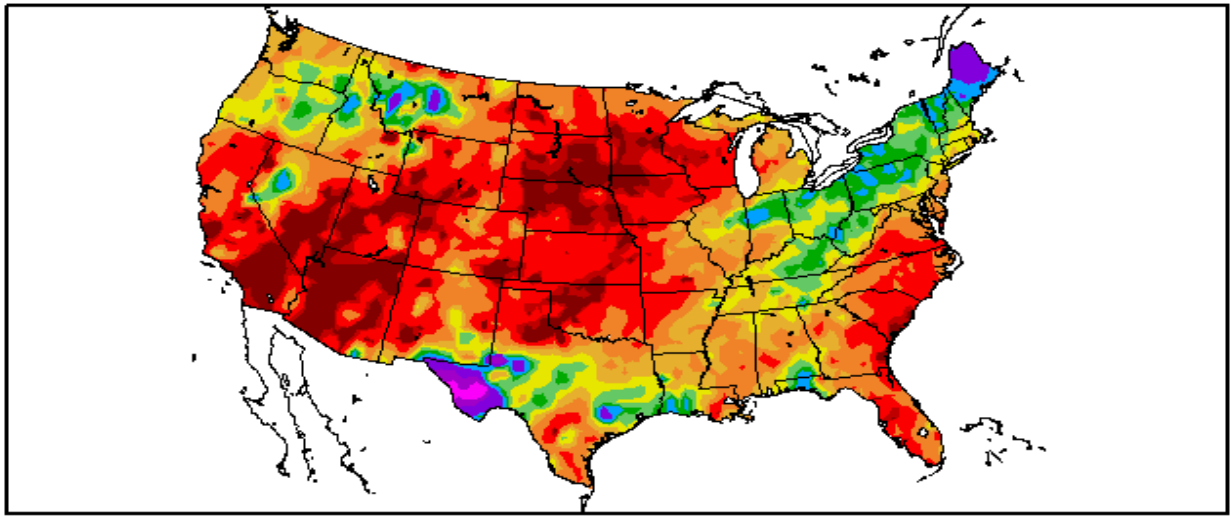


Generated 11/28/2007 at HPRCC using provisional data.

NOAA Regional Climate Centers

Despite the end of the month chill in the northern tier of the nation, the mildest conditions stretched from the Southwest into the northern Plains. The Southeast and most of the Northeast were cooler than normal.

Percent of Normal Precipitation (%) 11/1/2007 - 11/27/2007

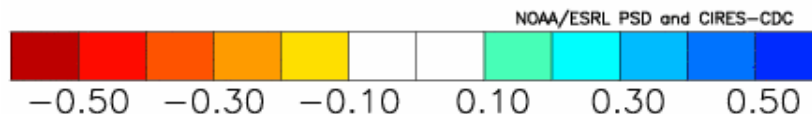
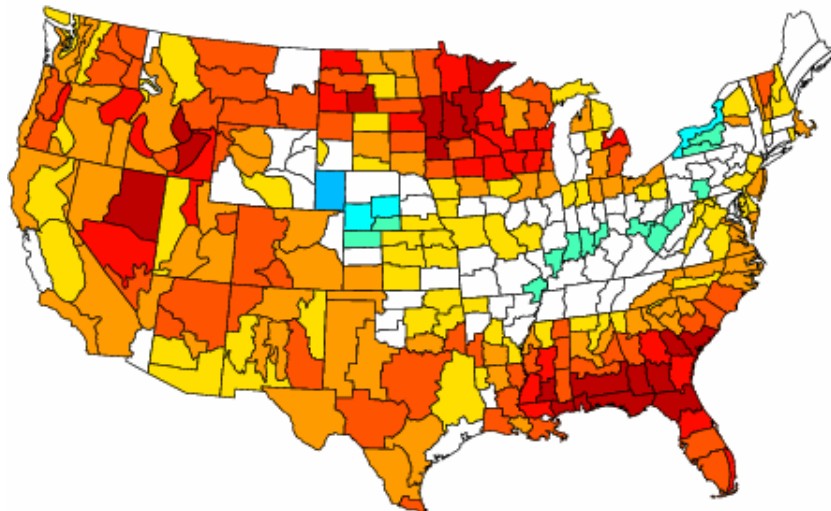


Generated 11/28/2007 at HPRCC using provisional data.

NOAA Regional Climate Centers

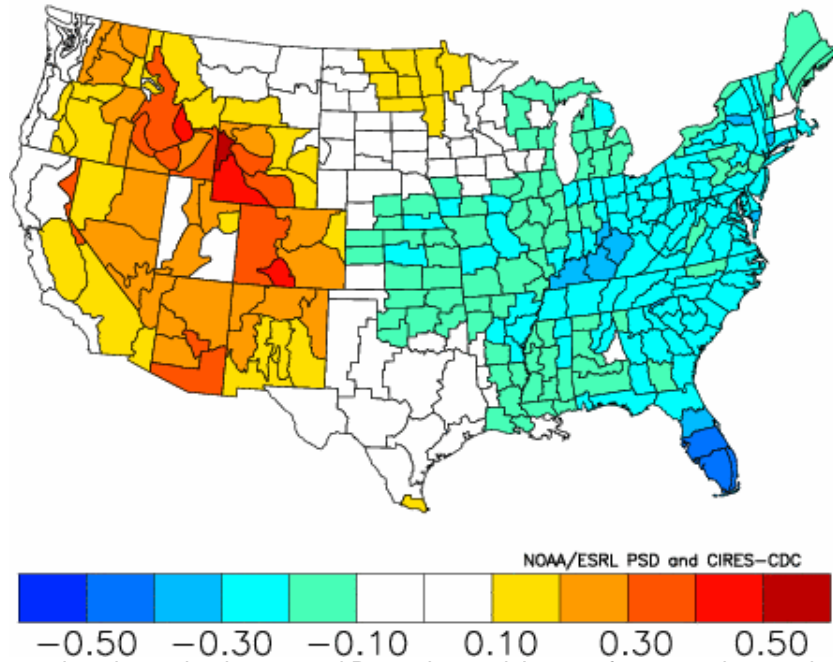
Rainfall was well below average across much of the country, especially along the Southeast coast and in the central Plains. Parts of the northern Rockies, much of the interior Northeast and sections of western Texas were wet/snowy.

Composite Standardized Precipitation Anomalies Versus 1895–2000 Longterm Average Dec to Jan 1901–02, 1904–05, 1914–15, 1933–34, 1939–40, 1949–50, 1954–55, 1962–63 1999–00,



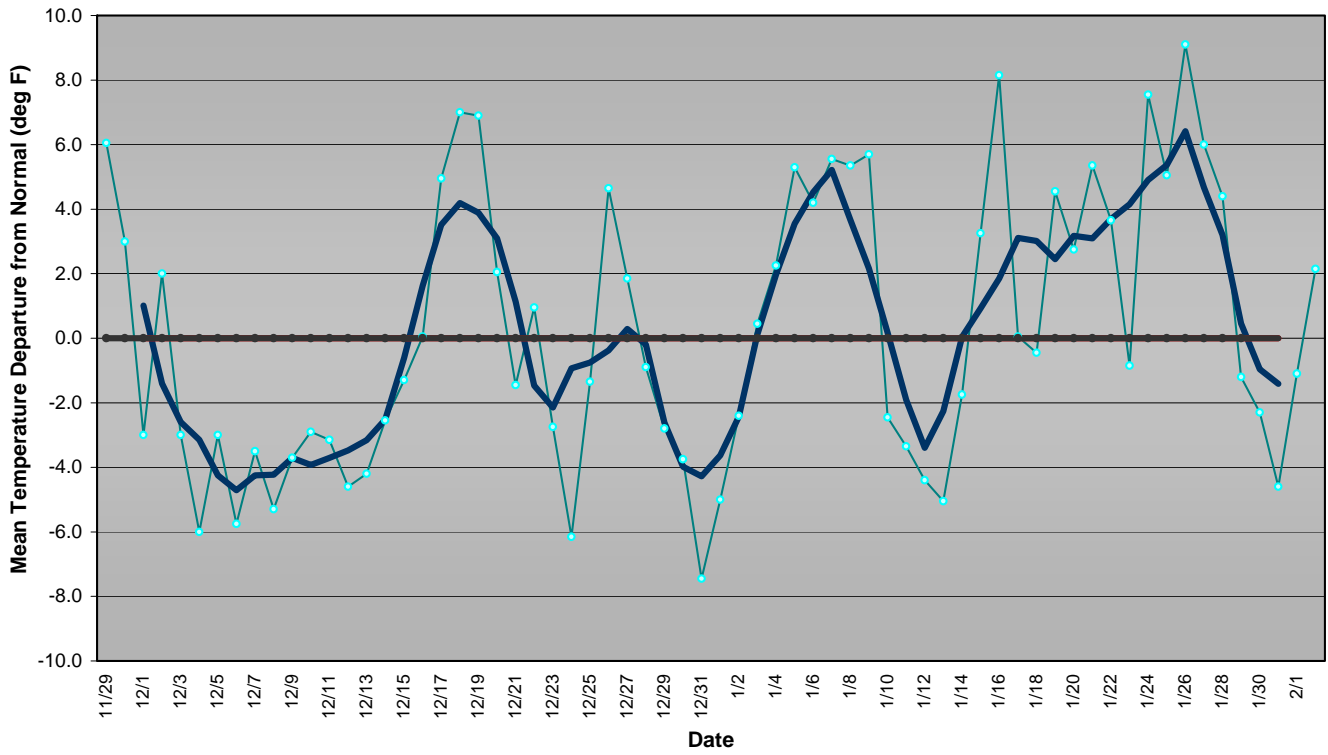
Other years that had similar weather in November saw drier than normal conditions dominate nearly the entire country through December and January.

Composite Standardized Temperature Anomalies
Versus 1895–2000 Longterm Average
Dec to Jan 1901–02,1904–05,1914–15,1933–34,1939–40,1949–50,1954–55,1962–63
1999–00,

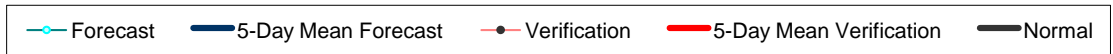
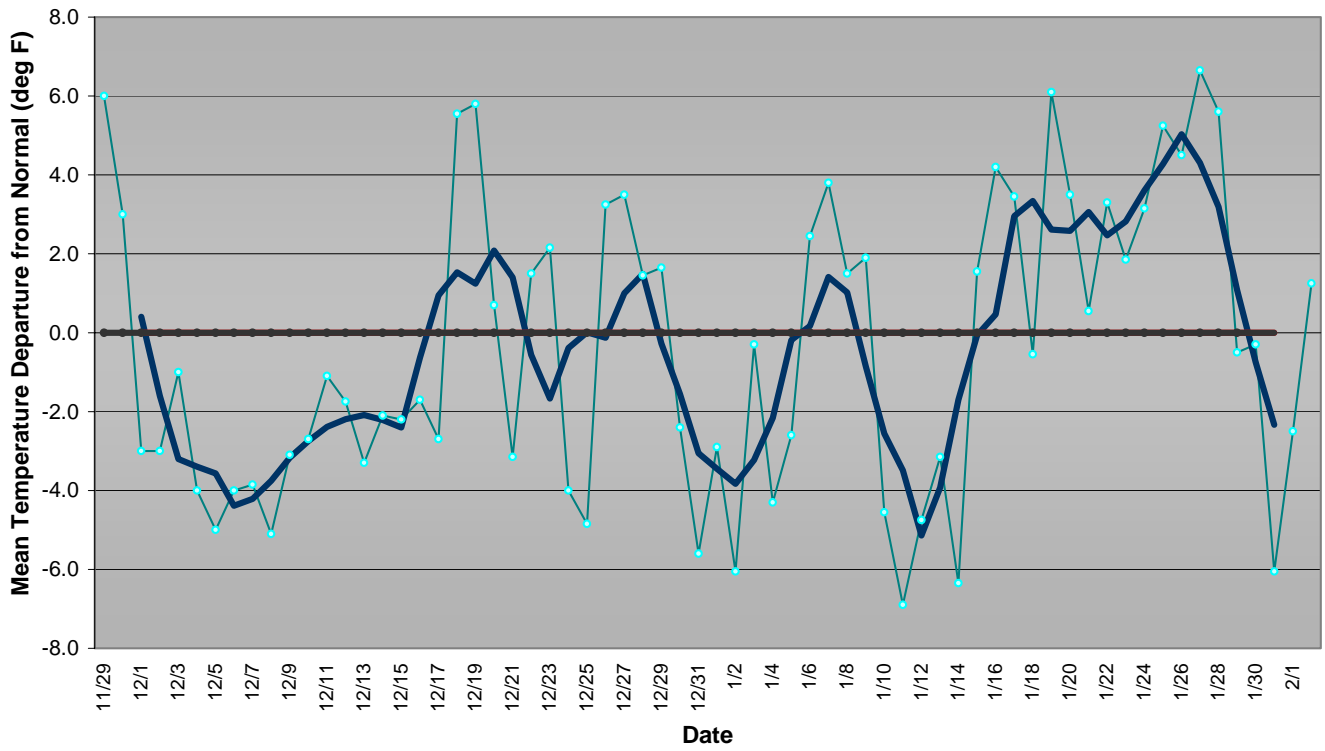


Those same years typically produced a cooler than normal December and January for areas along and east of the Mississippi River. From the Rocky Mountains to the Pacific Coast, temperatures were either warmer than average or very close to the normal temperature. Though there are many indications that there will be a reversal with Dec being cold and January turning much warmer.

Western Pennsylvania Temperature Forecast December 2007 - January 2008



Central Pennsylvania Temperature Forecast December 2007 - January 2008



Eastern Pennsylvania Temperature Forecast December 2007 - January 2008

