

The Pennsylvania Observer

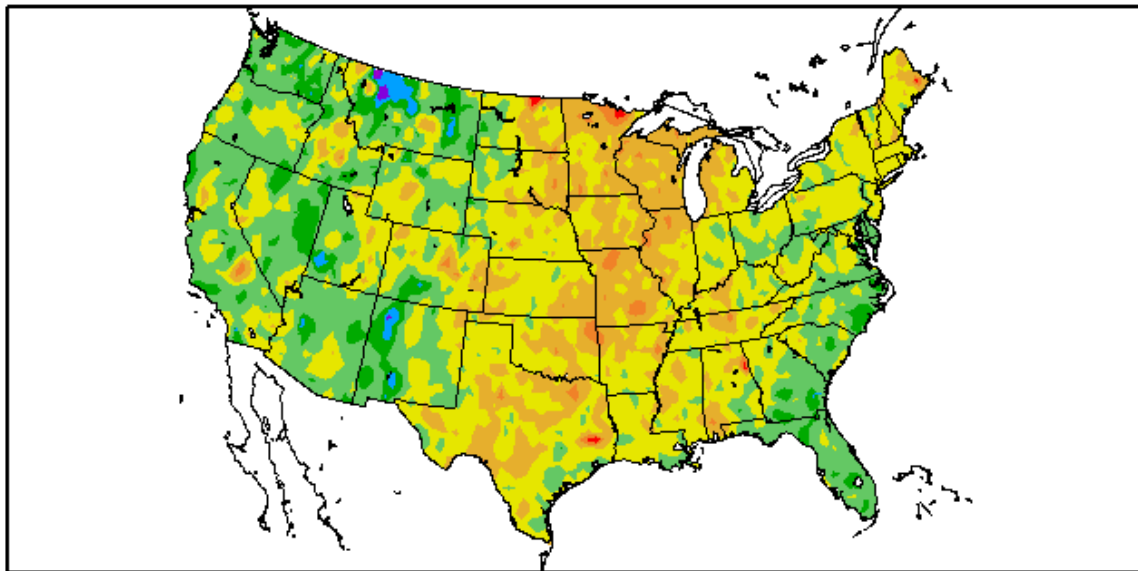


Outlook

Experimental Long Range Outlook for Pennsylvania: December 2010 – January 2011

By: Josh Magerman

Departure from Normal Temperature (F)
11/1/2010 – 11/30/2010

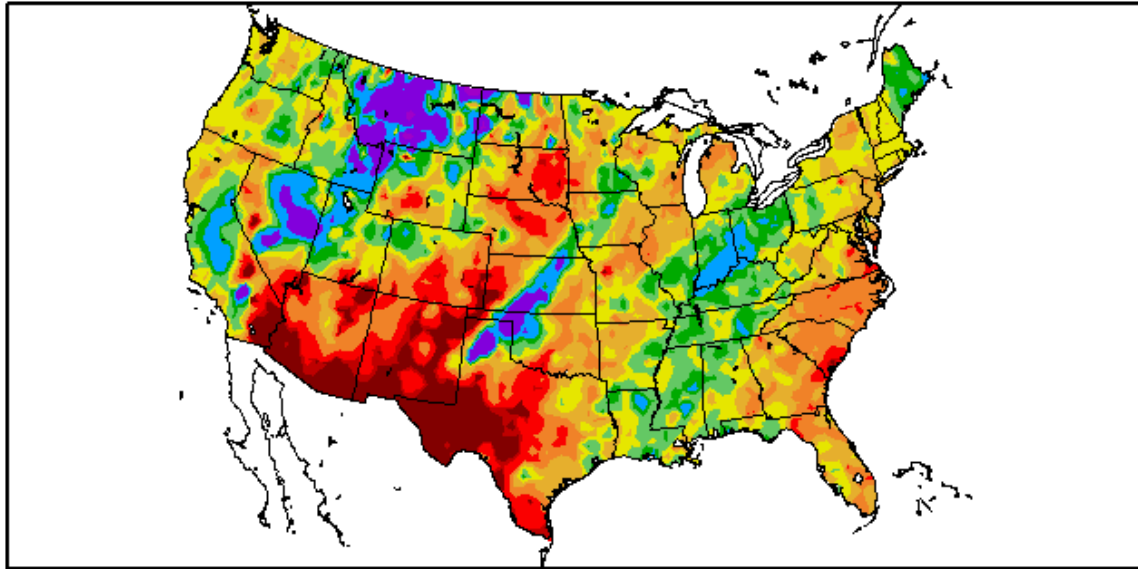


Generated 12/1/2010 at HPRCC using provisional data.

Regional Climate Centers

Above average temperatures were felt throughout the Mississippi River Basin. The states along the southeast coast as well as the Pacific coast felt the chill from below normal temperatures.

Percent of Normal Precipitation (%)
11/1/2010 – 11/30/2010



Generated 12/1/2010 at HPRCC using provisional data.

Regional Climate Centers

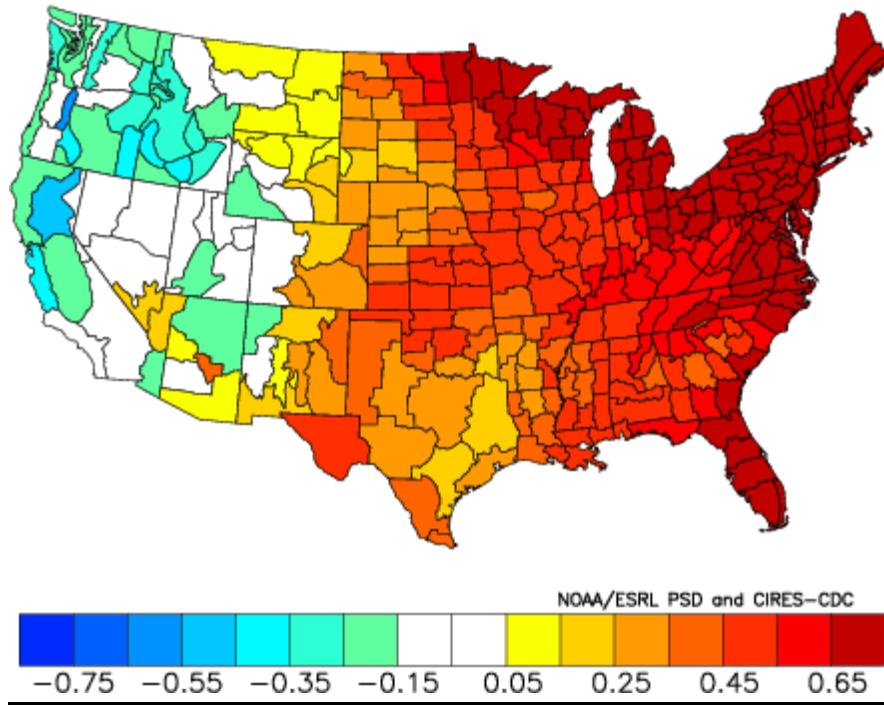
Precipitation was well above average in western Montana, which had a November that was one of the snowiest on record. In contrast, well below average precipitation was recorded in Arizona, New Mexico and western Texas.

These anomalies were input into the analog-mapper to determine from climate division data which years in the past best match this configuration. The years were:

1931, 1981, 2001, 1999, 1998, 1949, 1990, 2005, 1994, 1934

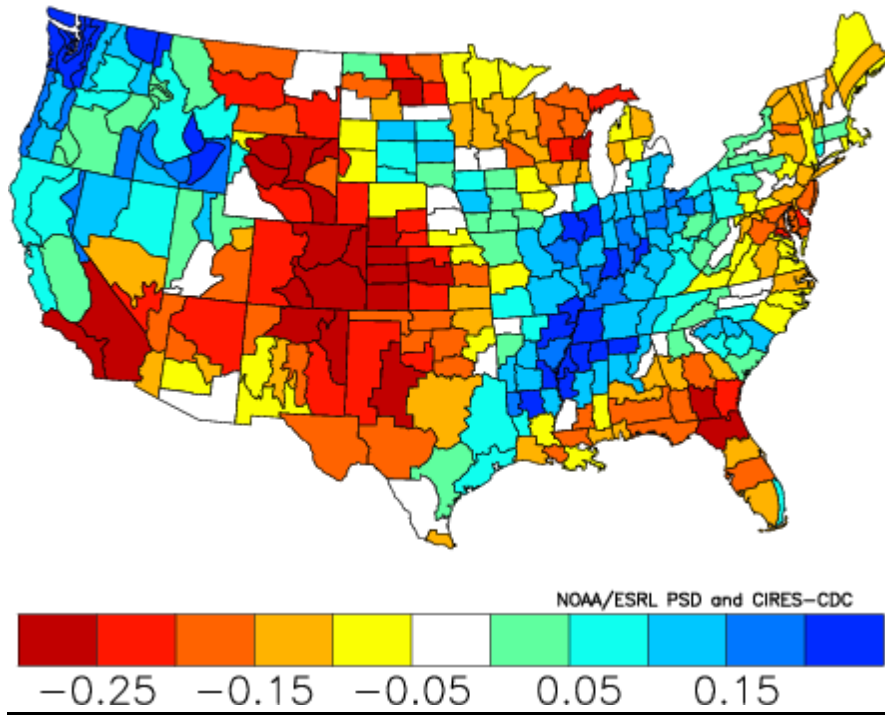
Listed below are the composite departures of precipitation and temperature for December through January.

Composite Standardized Temperature Anomalies
Dec 1931,1981,2001,1999,1998,1949,1990,2005,1994,1934
Versus 1895–2000 Longterm Average



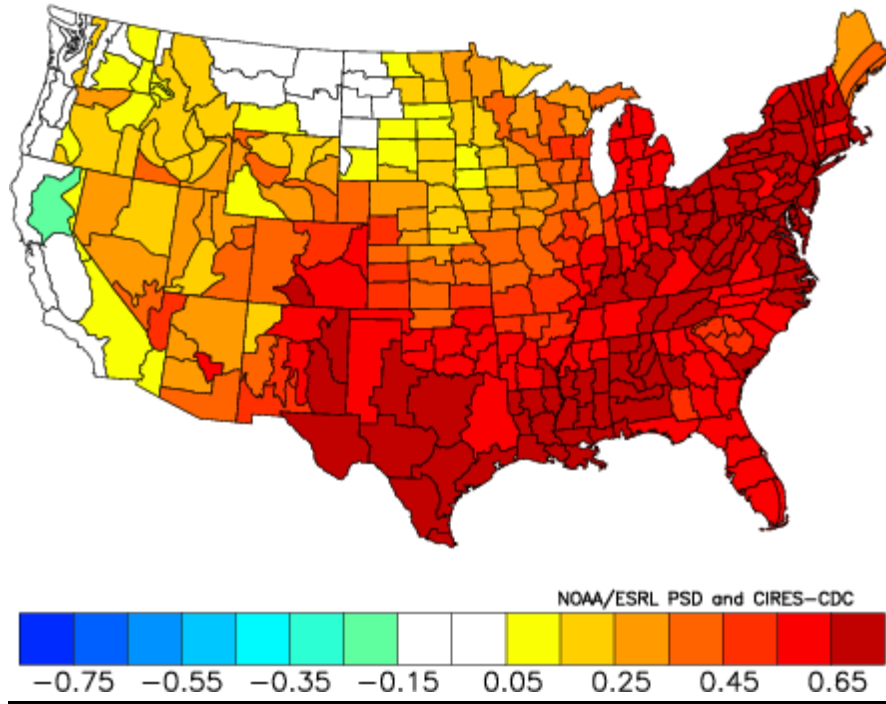
Expect generally above normal temperatures in the eastern half of the country, with average or cooler than average temperatures in the west.

Composite Standardized Precipitation Anomalies
Dec 1931,1981,2001,1999,1998,1949,1990,2005,1994,1934
Versus 1895–2000 Longterm Average



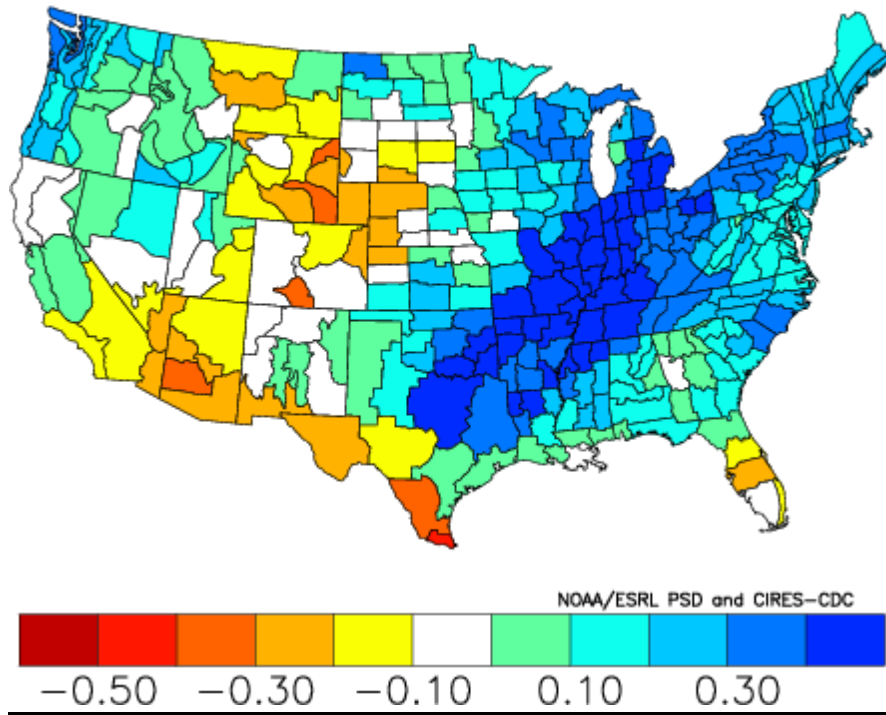
Expect drier than normal conditions in the central plains and intermountain west regions, and wetter than normal conditions in the Mississippi valley and northwest regions.

Composite Standardized Temperature Anomalies
Jan 1932,1982,2002,2000,1999,1950,1991,2006,1995,1935
Versus 1895–2000 Longterm Average



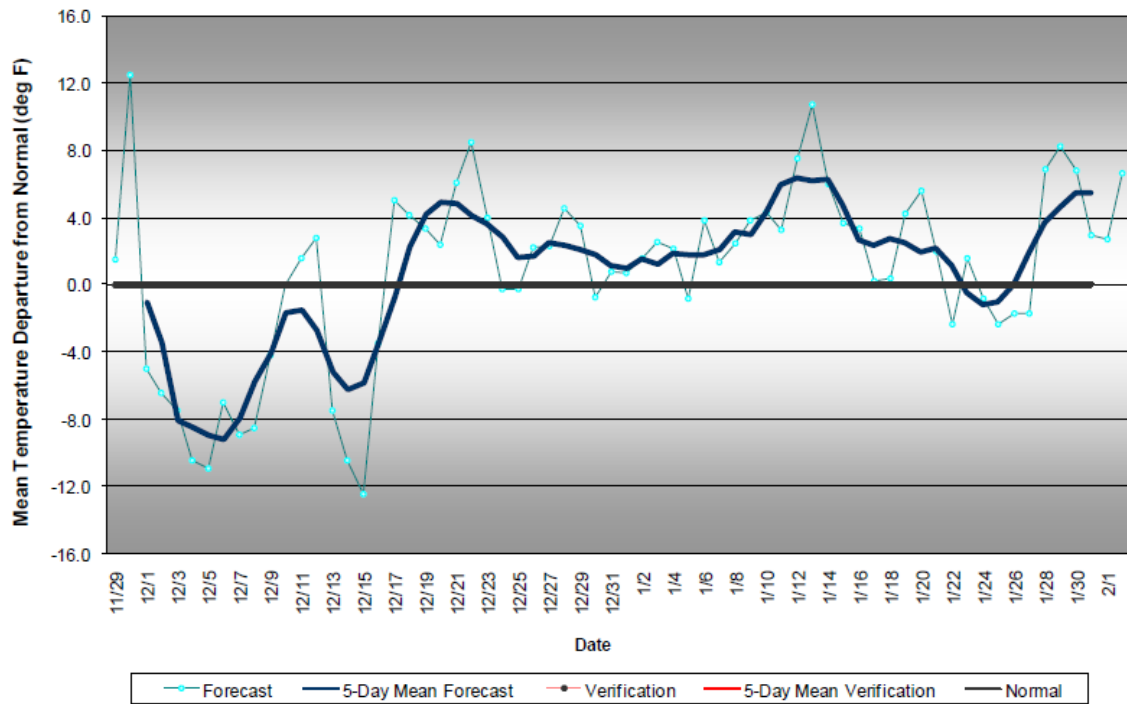
Expect warmer than normal conditions in the eastern and southern regions of the country, and near average temperatures along the west coast.

Composite Standardized Precipitation Anomalies
Jan 1932,1982,2002,2000,1999,1950,1991,2006,1995,1935
Versus 1895–2000 Longterm Average

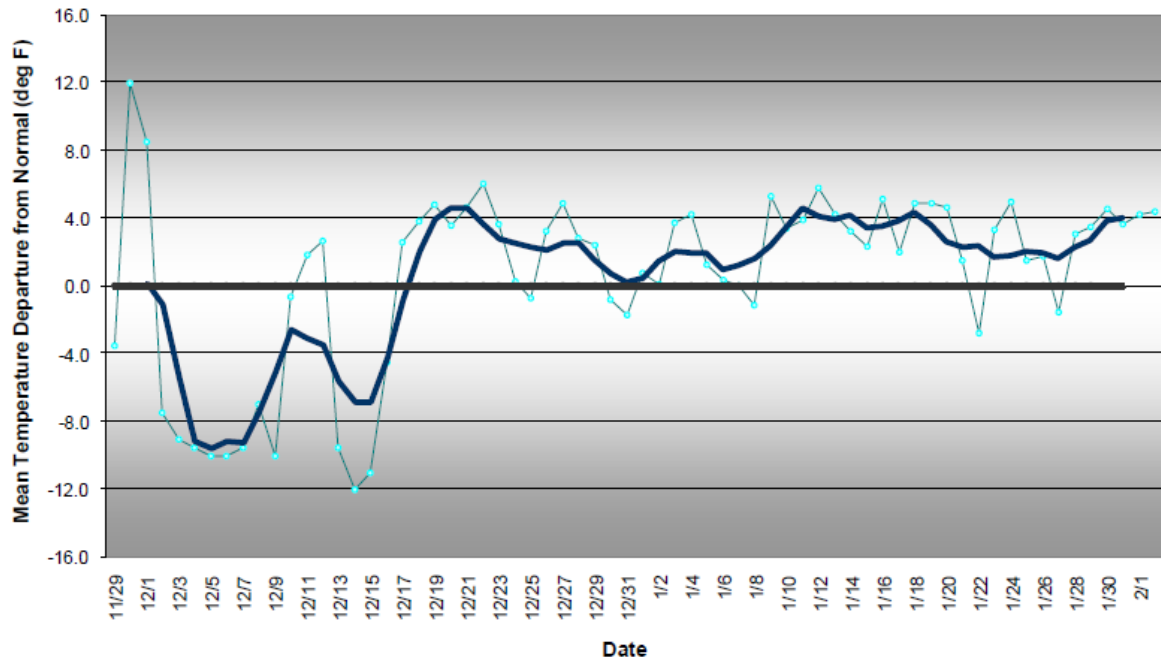


The Midwest and Missouri Valley can expect wetter than average conditions, and regions of the southwest can expect it to be drier than normal.

Western Pennsylvania Temperature Forecast
December 2010 - January 2011



Central Pennsylvania Temperature Forecast December 2010 - January 2011



Eastern Pennsylvania Temperature Forecast December 2010 - January 2011

