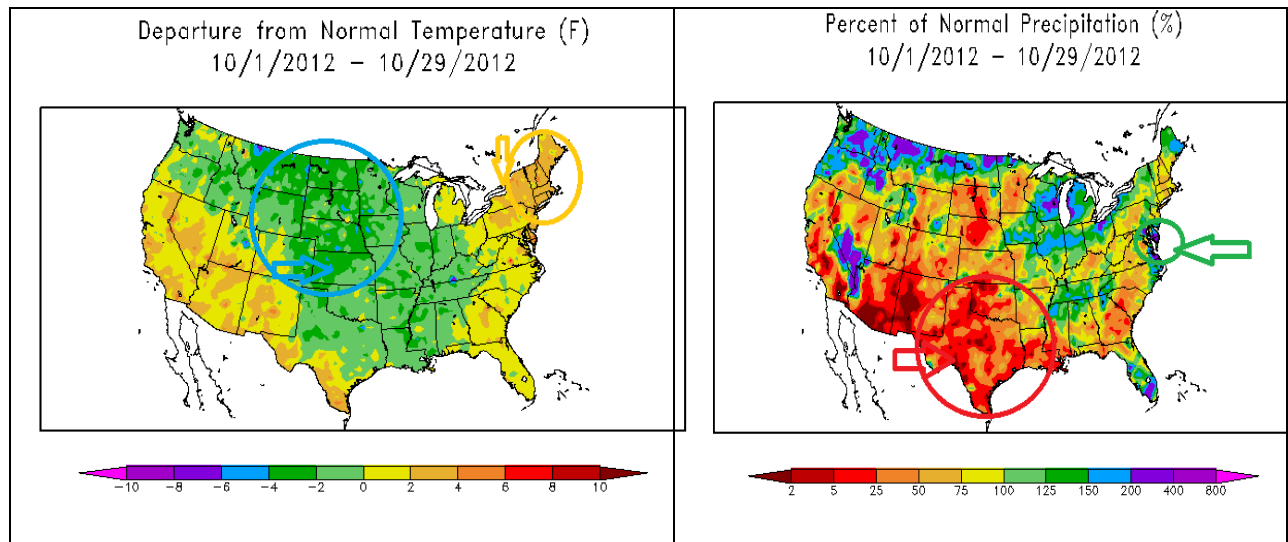


# The Pennsylvania Observer



## LONG RANGE OUTLOOK

By: Paul Knight

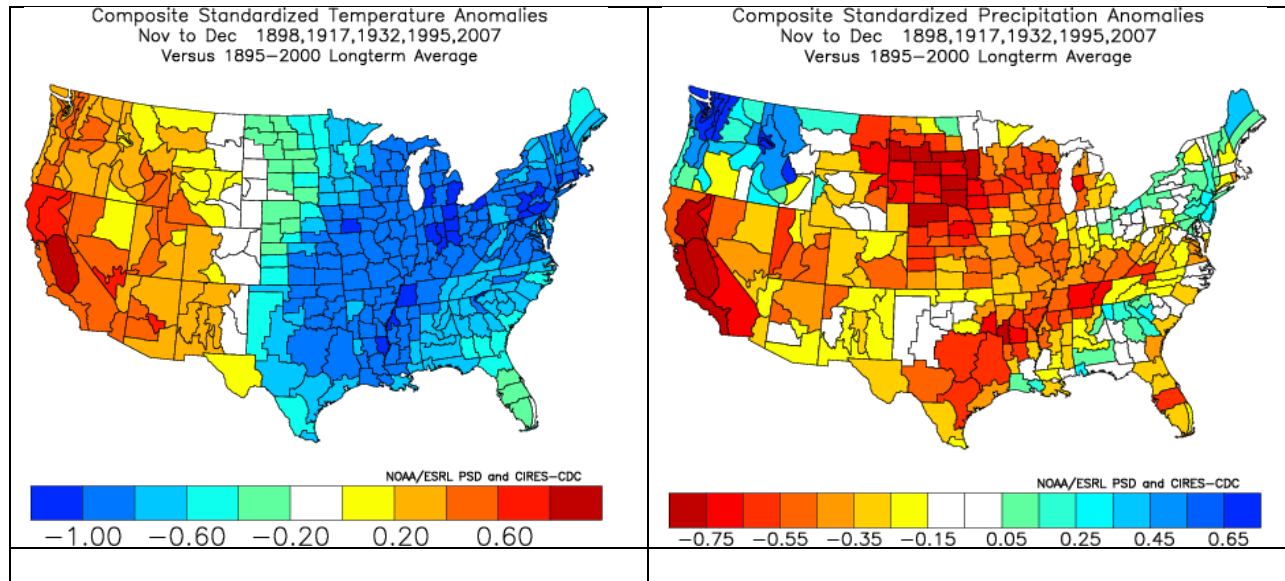


The anomalies during October featured very warm readings in New York and quite cool weather in Kansas. It was a dry October in Texas and very wet in Maryland.

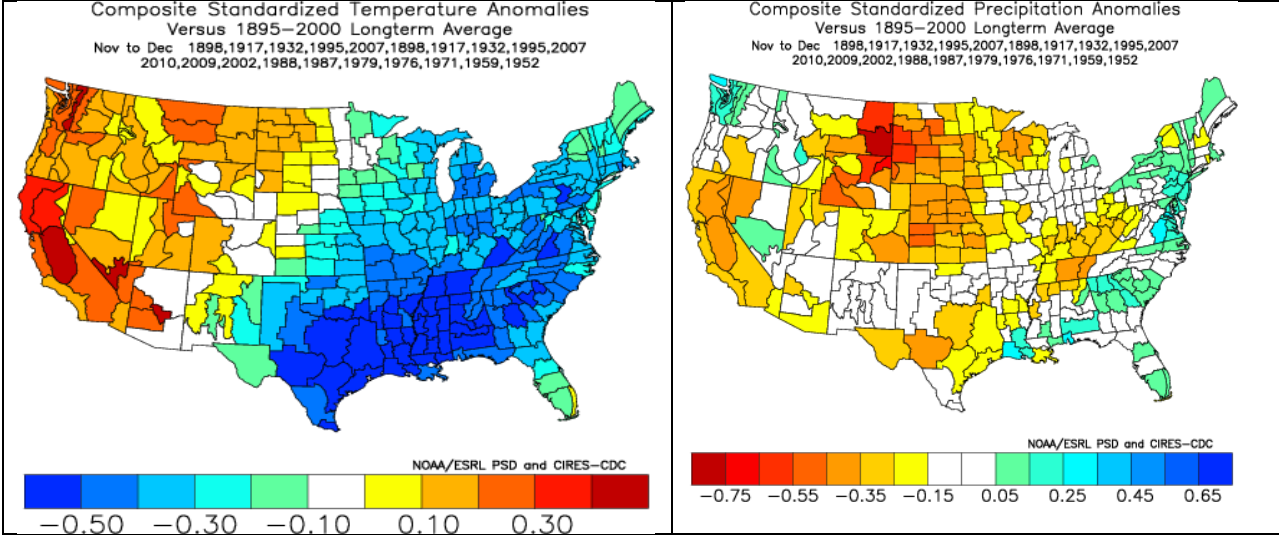
When comparing previous Octobers with the combination of these anomalies, the following years are common.

NY Warm	1899	50.9	Kansas Cool	1895	51.3	Texas Dry	1898	1.13	Maryland Moist	1898	4.91
	1900	54.3		1896	53.2		1917	0.35		1902	5.77
	1913	51.6		1898	52.8		1921	0.54		1906	5.21
	1919	51.1		1905	53		1924	0.66		1917	5.7
	1920	54.1		1906	53.6		1932	0.86		1925	5.53
	1927	51.5		1908	54.1		1933	1.15		1927	6.05
	1931	51.7		1911	53.9		1934	0.38		1929	5.62
	1932	51		1913	53		1938	0.92		1932	6.35
	1946	53.1		1917	50		1943	1.16		1937	6.95
	1947	55.8		1919	53.6		1947	1.09		1939	4.82
	1949	53.7		1923	50.6		1950	0.51		1942	6.54
	1950	51.5		1925	46.9		1951	1.27		1943	5.14
	1951	51		1930	54		1952	0.02		1959	4.85
	1953	50.7		1936	54.2		1963	0.97		1971	6.56
	1954	52.7		1952	54.2		1964	0.93		1976	8.05
	1955	51.6		1959	52.7		1978	1.22		1977	4.69
	1961	52.1		1969	51.7		1979	1.21		1979	5.36
	1963	54.1		1970	52.4		1980	1.11		1983	4.67
	1968	50.9		1972	54		1987	0.77		1995	6.37
	1970	51.4		1976	50.6		1988	1.22		2002	6.42
	1971	54.7		1987	53.6		1992	0.98		2005	7.72
	1984	51.5		1988	53.6		1995	1.15		2006	5.32
	1990	50.8		1993	53.6		1999	1.31		2007	4.66
	1995	52.2		2002	50.3		2007	1.16		2009	5.94
	2007	54.7		2009	48.2		2010	0.82		2010	5.5

For the five most similar years, the composite of the Nov-Dec temperature and precipitation departures are seen below:

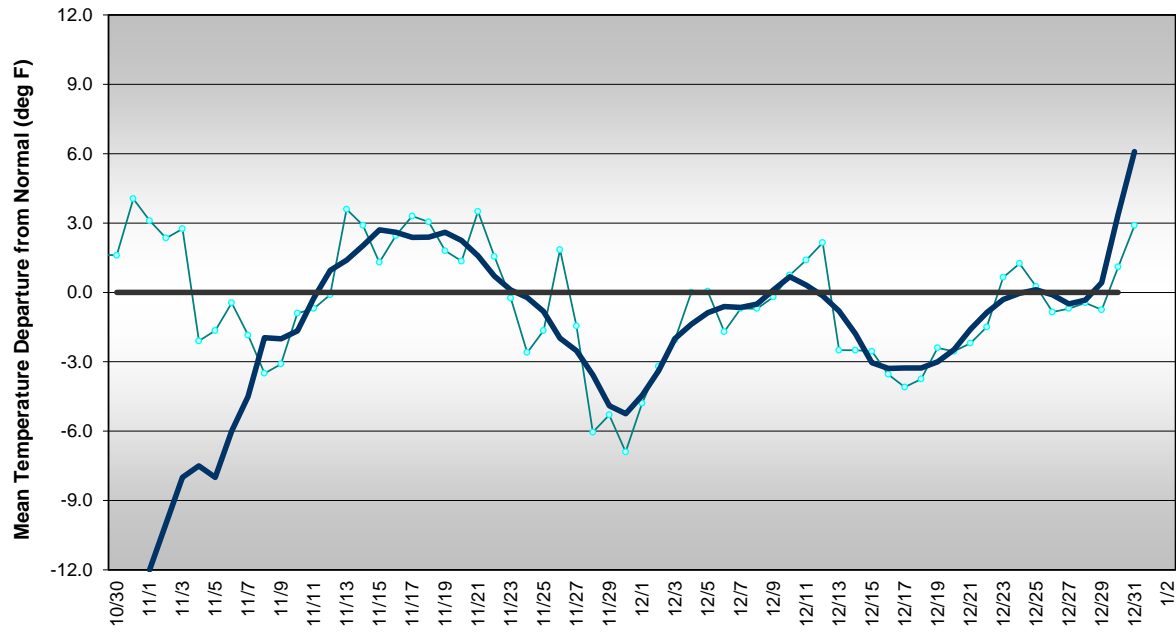


When including all the years, but weighting the most common, the results are as follows:

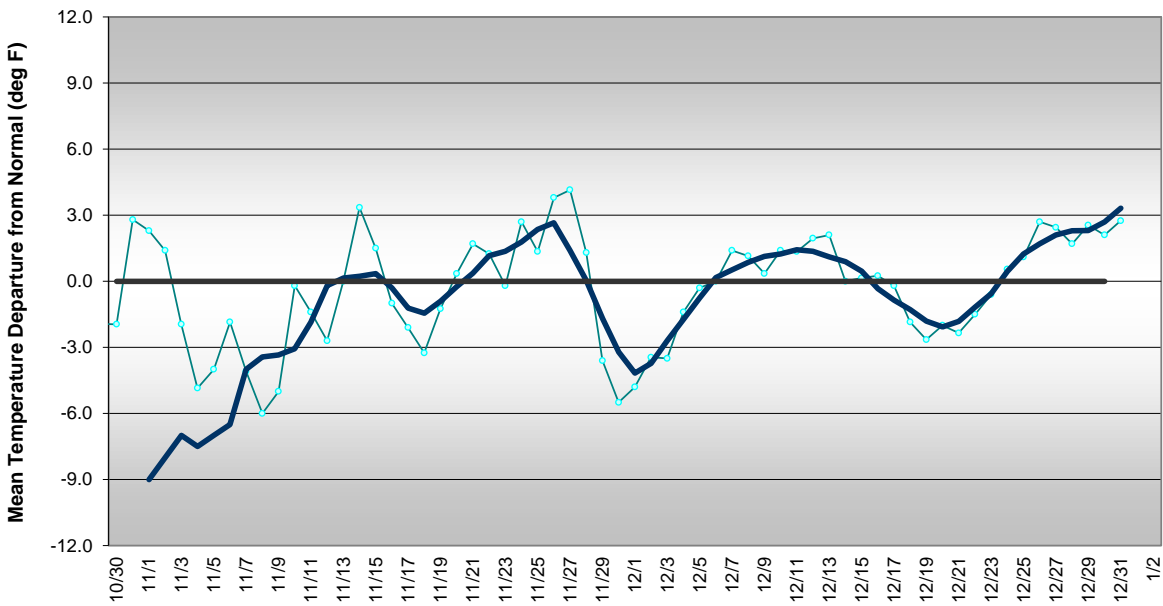


In summary, the current pattern favors an early and possibly snowy start to winter in Pennsylvania.

### Western Pennsylvania Temperature Forecast November - December 2012



### Central Pennsylvania Temperature Forecast November - December 2012



### Eastern Pennsylvania Temperature Forecast November - December 2012

