

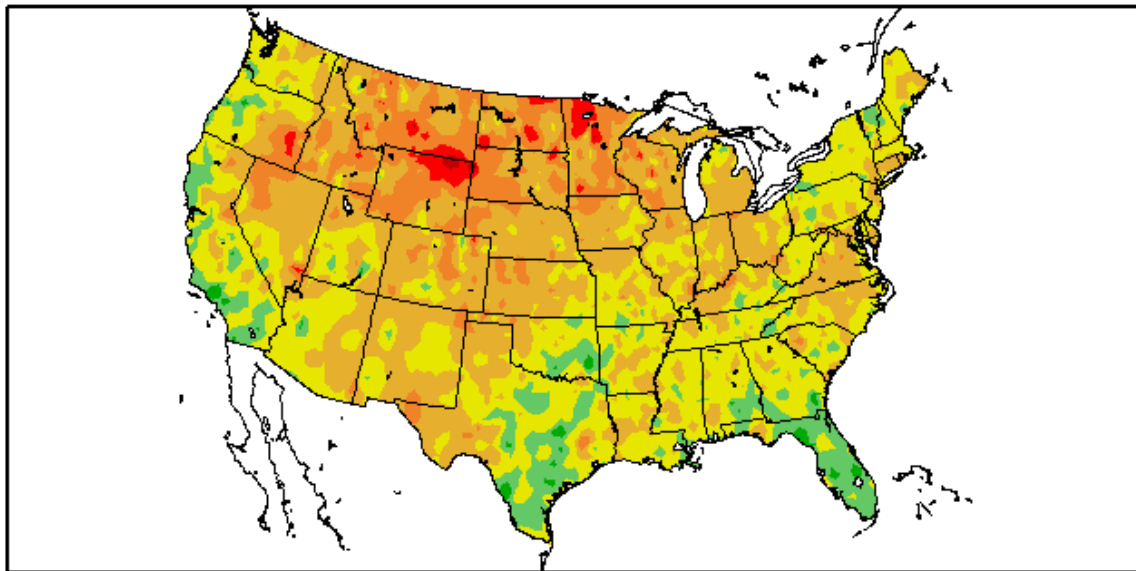
The Pennsylvania Observer



Outlook

Experimental Long Range Outlook for Pennsylvania: November 2010 – December 2010

Departure from Normal Temperature (F)
10/1/2010 – 10/31/2010

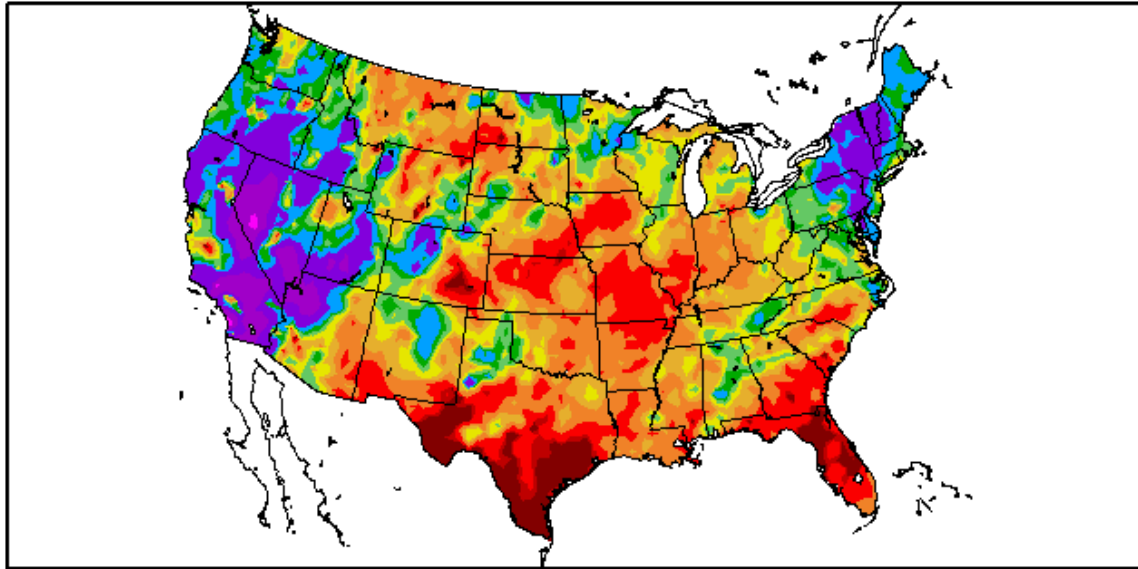


Generated 11/1/2010 at HPRCC using provisional data.

Regional Climate Centers

October 2010 featured above normal temperatures in the upper Midwestern region, while the Southern Pacific coast and the Florida peninsula experienced below normal temperatures.

Percent of Normal Precipitation (%)
10/1/2010 - 10/31/2010



Generated 11/1/2010 at HPRCC using provisional data.

Regional Climate Centers

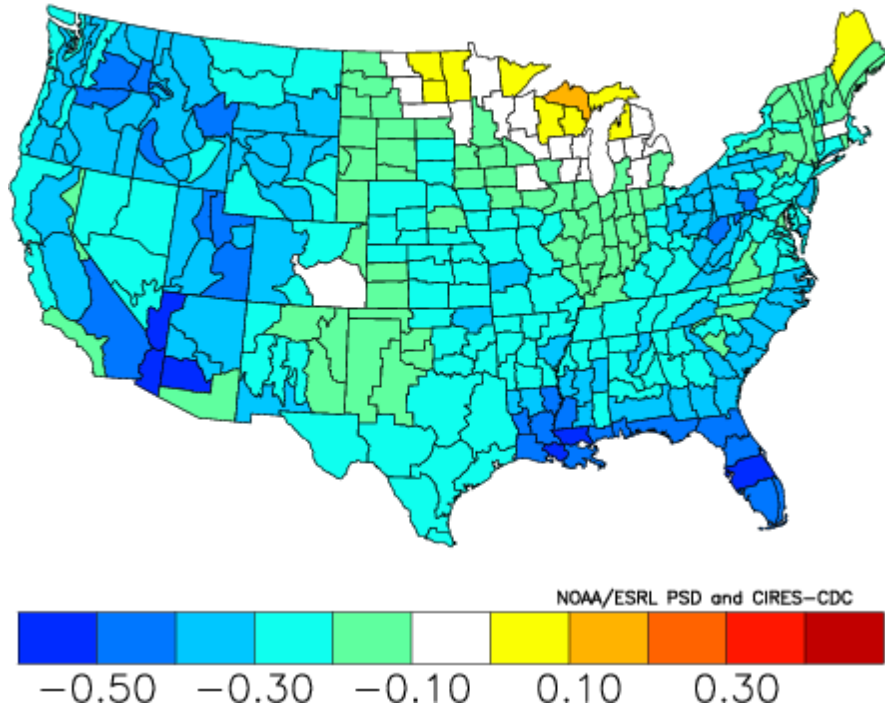
October was quite dry in the Midwestern region, southern Atlantic coast, and much of Texas. Above normal precipitation was felt throughout New England as well as the western tier of the nation.

These anomalies were input into the analog-mapper to determine from climate division data which years in the past best match this configuration. The years were:

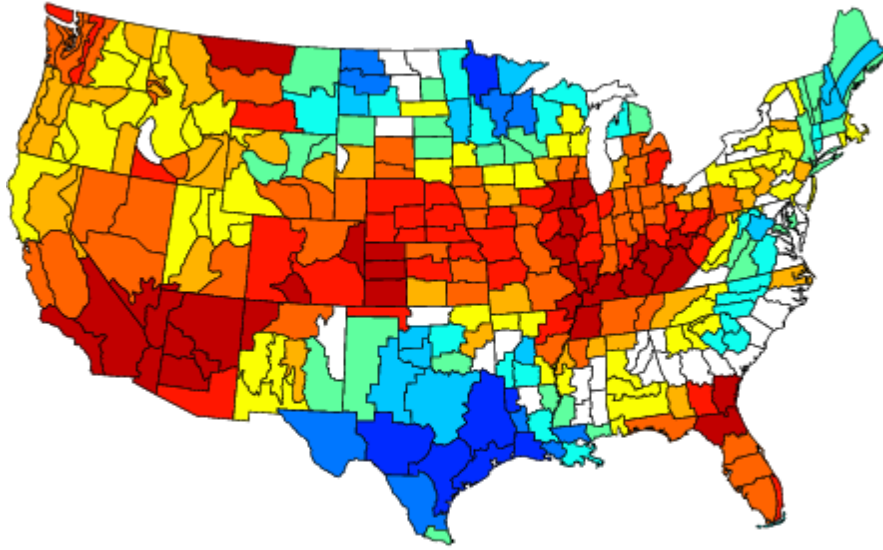
1943, 2000, 1924, 1920, 1917, 1963, 1938, 1974, 1955, 1940.

Listed below are the composite departures of precipitation and temperature for November through December.

Composite Standardized Temperature Anomalies
Nov 1943,2000,1924,1920,1917,1963,1938,1974,1955,1940
Versus 1895–2000 Longterm Average



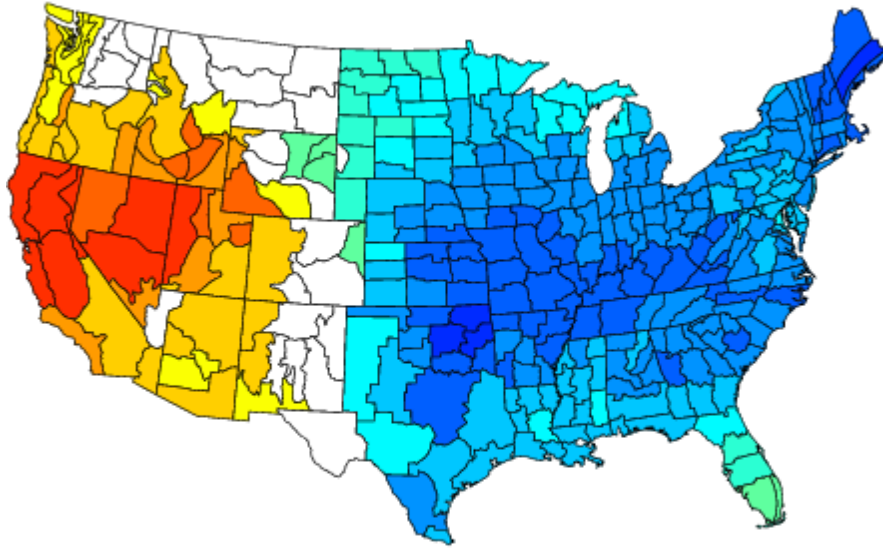
Composite Standardized Precipitation Anomalies
Nov 1943,2000,1924,1920,1917,1963,1938,1974,1955,1940
Versus 1895–2000 Longterm Average



NOAA/ESRL PSD and CIRES-CDC



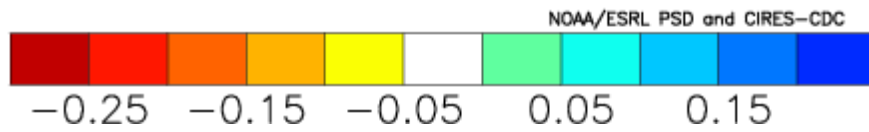
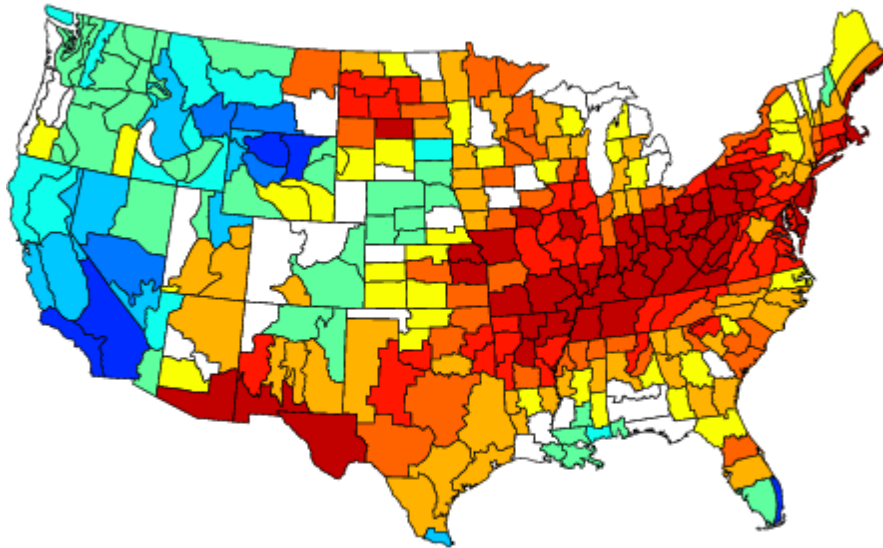
-0.25 -0.15 -0.05 0.05 0.15
Composite Standardized Temperature Anomalies
Dec 1943,2000,1924,1920,1917,1963,1938,1974,1955,1940
Versus 1895–2000 Longterm Average



NOAA/ESRL PSD and CIRES-CDC

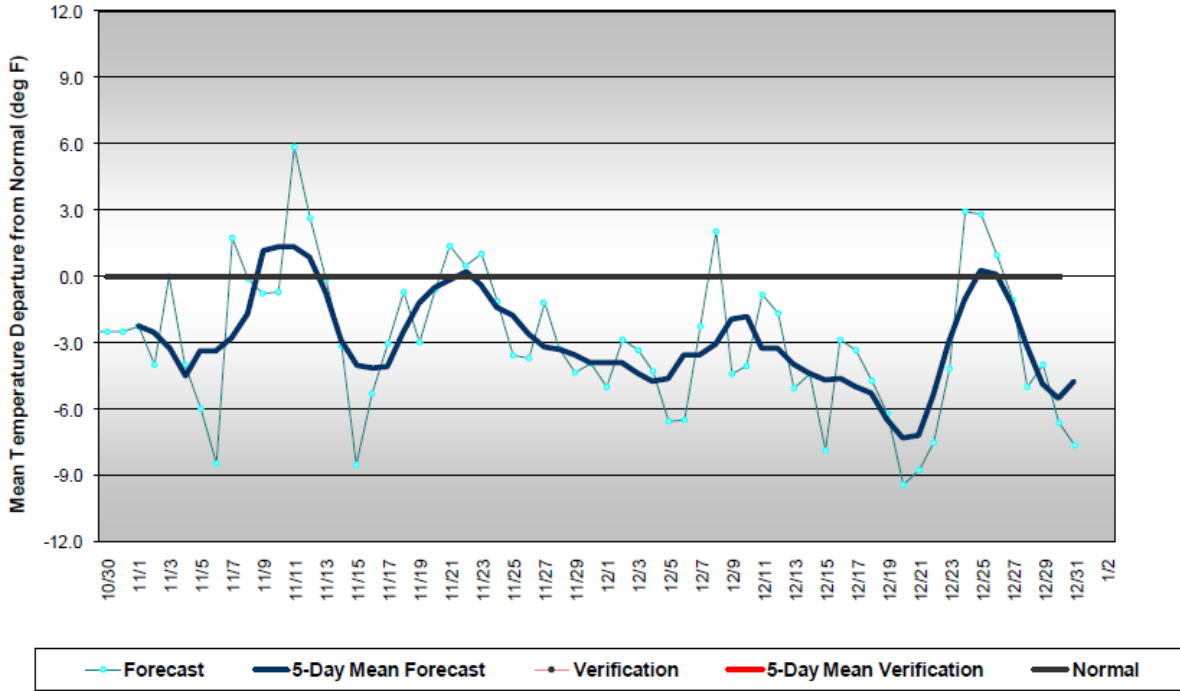


Composite Standardized Precipitation Anomalies
Dec 1943,2000,1924,1920,1917,1963,1938,1974,1955,1940
Versus 1895–2000 Longterm Average

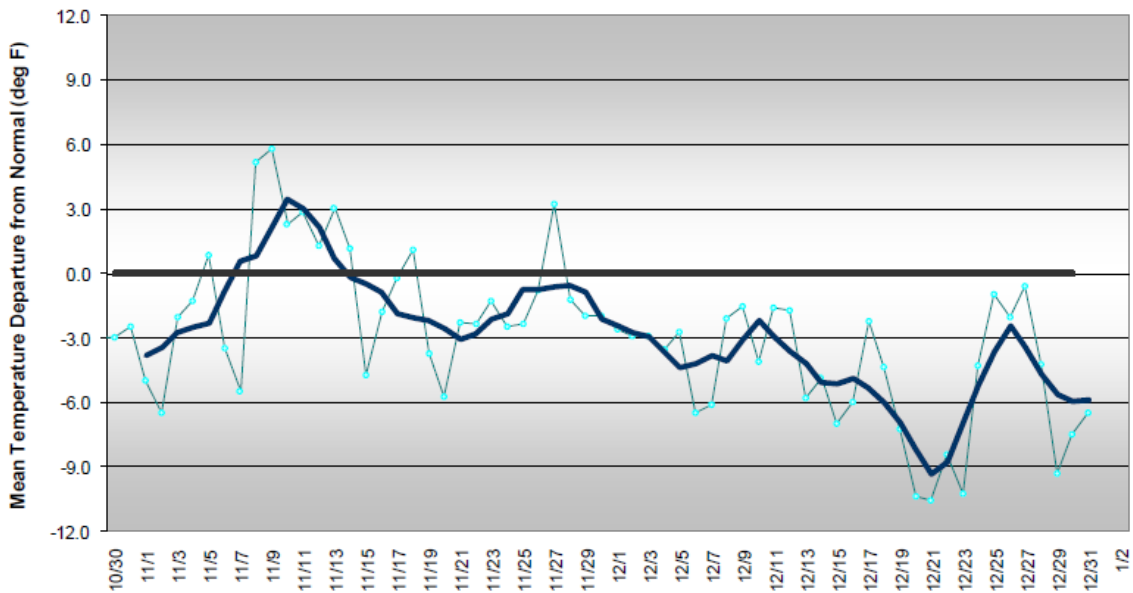


Applying those same analog years produced the following daily departures from normal for three regions of Pennsylvania for the period from November 1 – December 31.

**Western Pennsylvania Temperature Forecast
November - December 2010**



Central Pennsylvania Temperature Forecast November - December 2010



Eastern Pennsylvania Temperature Forecast November - December 2010

