

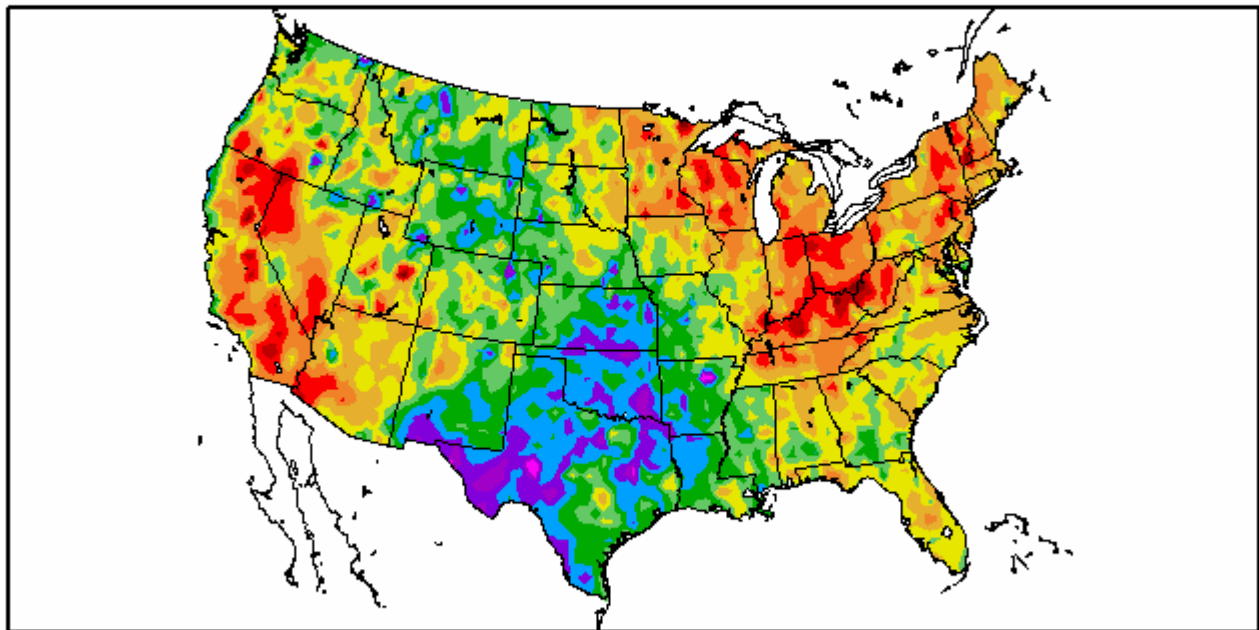
The Pennsylvania Observer



Outlook

Experimental Long Range Outlook for Pennsylvania: October 2008– November 2008

Departure from Normal Temperature (F)
9/1/2008 – 9/30/2008

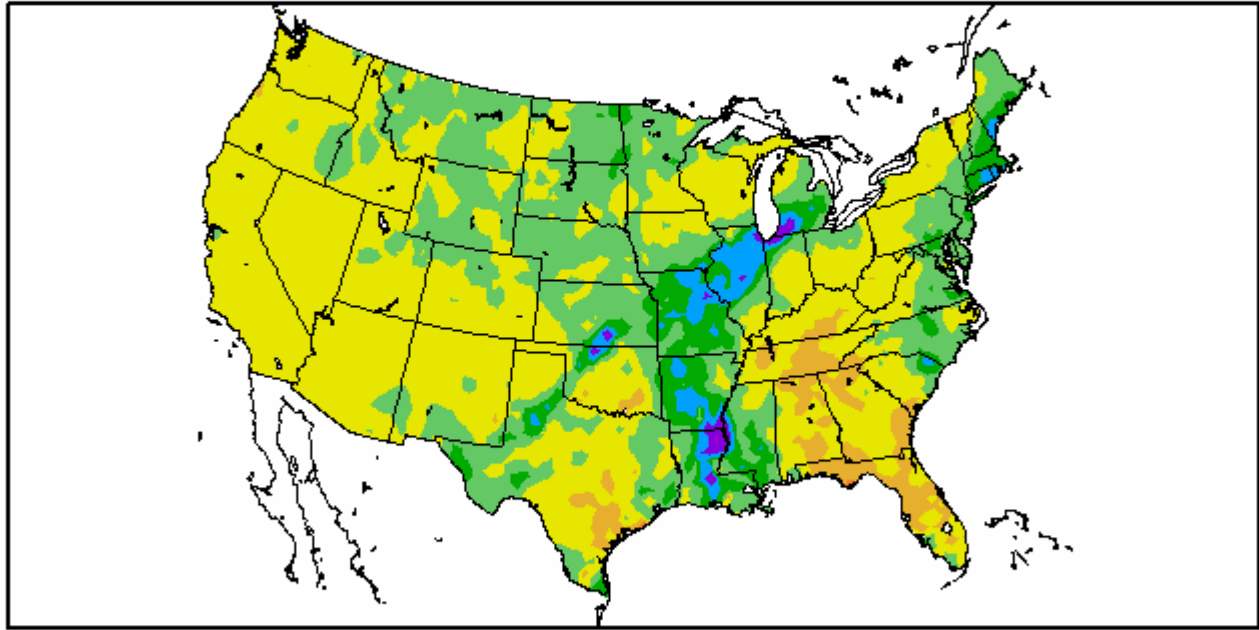


Generated 10/2/2008 at HPRCC using provisional data.

NOAA Regional Climate Centers

The significant temperature departures for September can be found in the Ohio Valley as well as the South Central States.

Departure from Normal Precipitation (in)
9/1/2008 - 9/30/2008



Generated 10/2/2008 at HPRCC using provisional data.

NOAA Regional Climate Centers

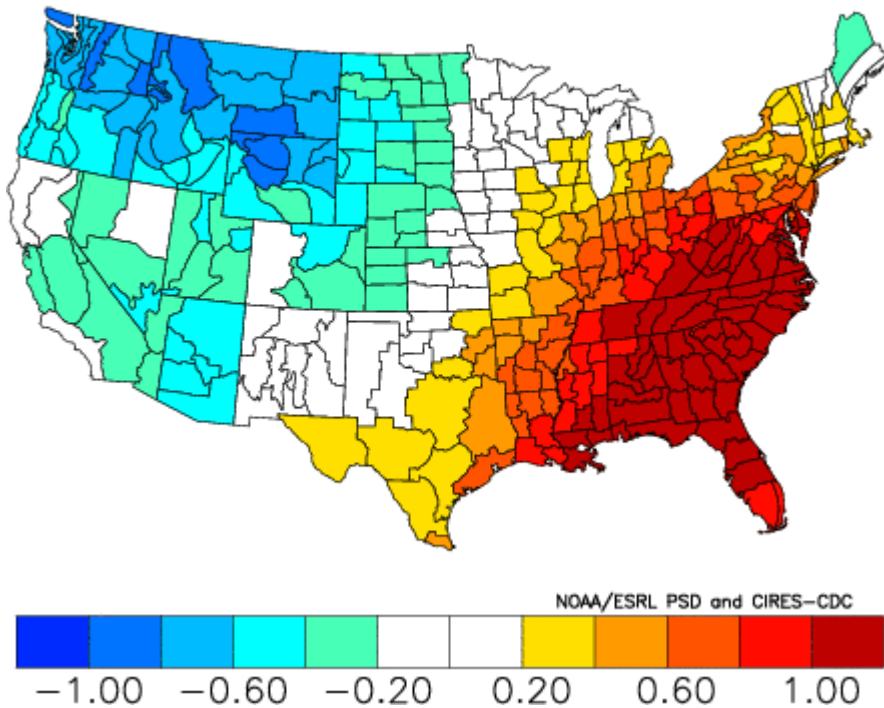
Exceptionally dry conditions existed in the Southeastern states, especially Florida. However, due to an active hurricane season in the Gulf, greater than average precipitation totals were present in Louisiana and extended up into Michigan.

These anomalies were input into the analog-mapper to determine from climate division data which years in the past best match this configuration. The years were:

1919, 1931, 1940, 1941, 1958, 1961, 1978, 1983, 1985, 1986.

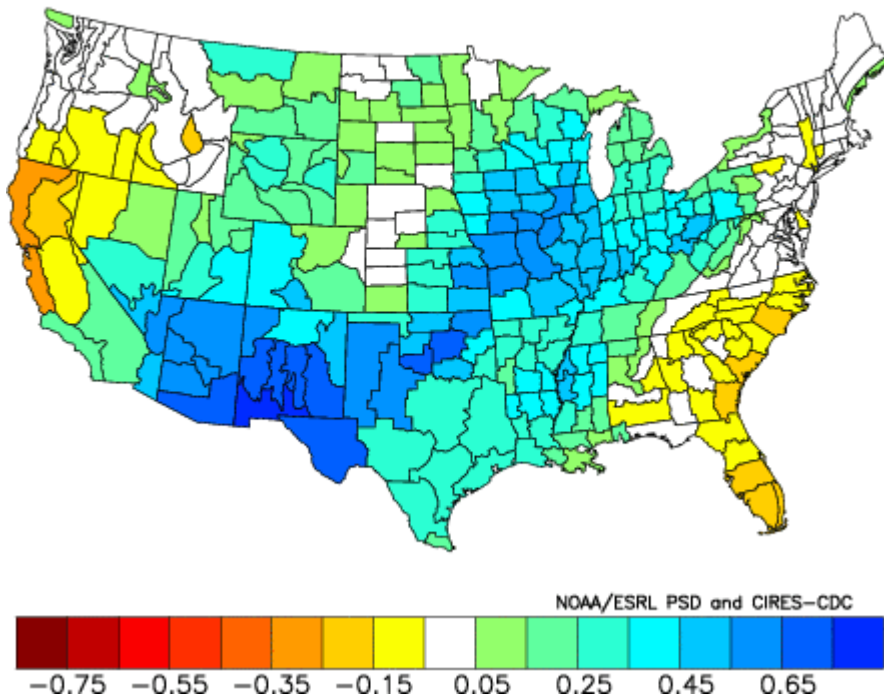
Listed below are the composite departures of precipitation and temperature for October through November.

Composite Standardized Temperature Anomalies
 Oct to Nov 1978,1961,1931,1940,1919,1986,1958,1941,1985,1983
 Versus 1895–2000 Longterm Average



The forecast here calls for warmer than average temperatures for the Southeastern half of the United States, while the Northwestern sector remains under a cool spell for the next two months.

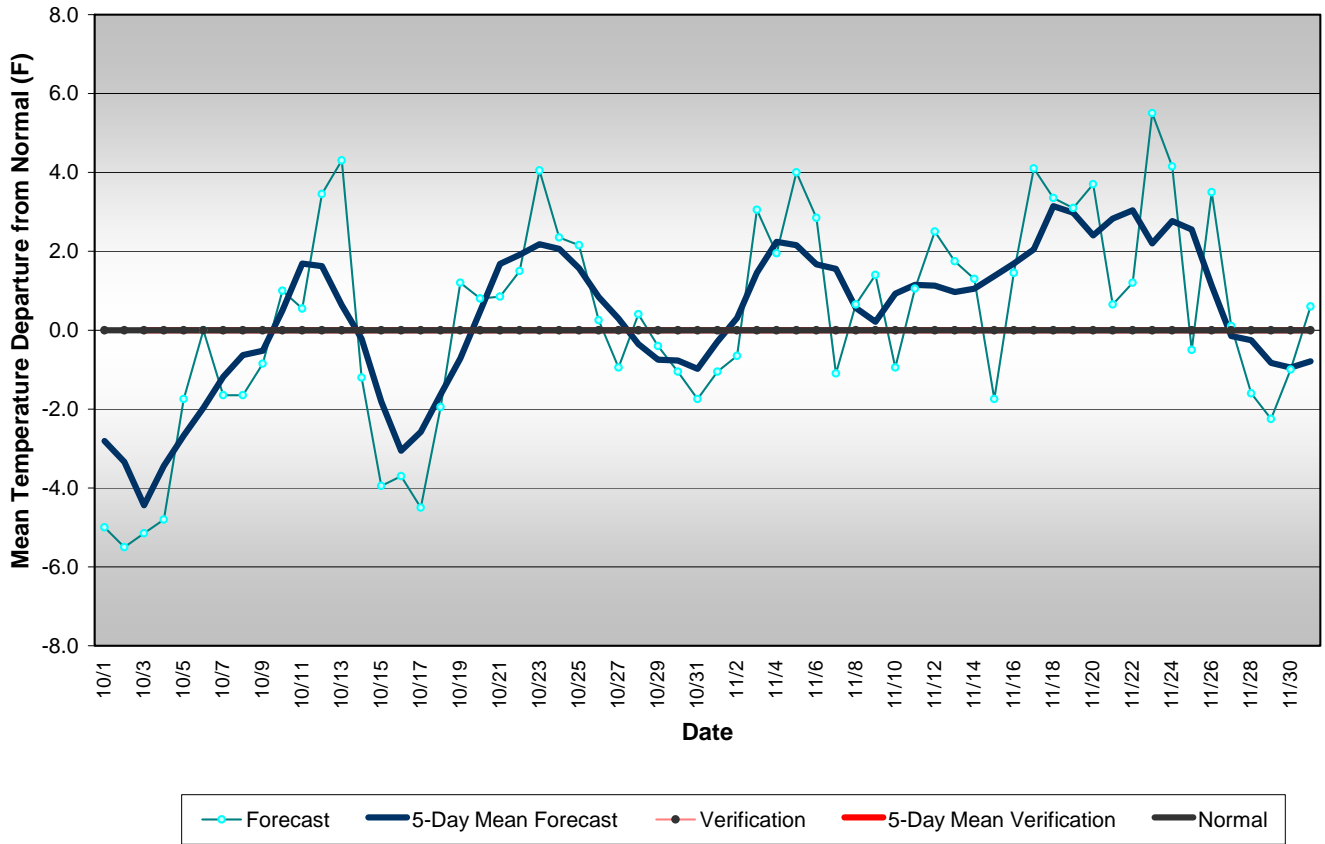
Composite Standardized Precipitation Anomalies
 Oct to Nov 1978,1961,1931,1940,1919,1986,1958,1941,1985,1983
 Versus 1895–2000 Longterm Average



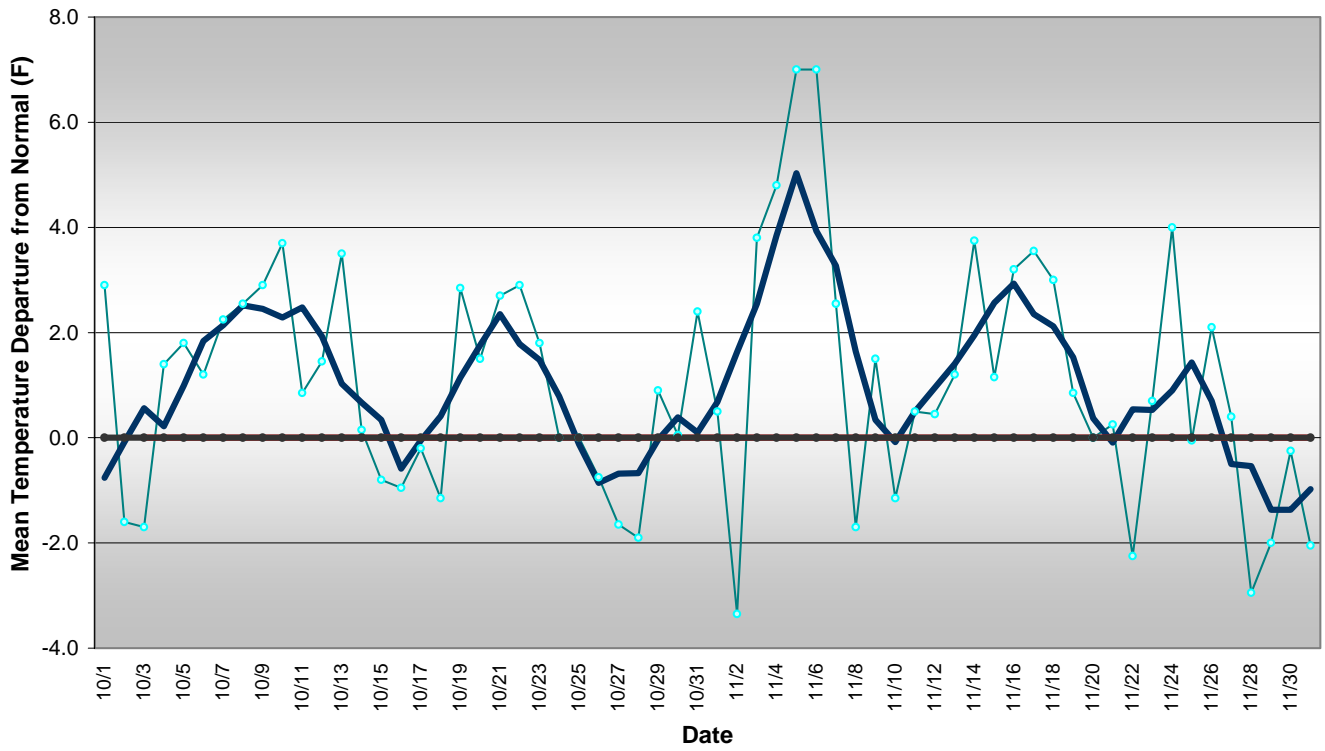
A trend of significant moisture for October through November can be seen in the central part of the county.

Applying those same analog years produced the following daily departures from normal for three regions of Pennsylvania for the period from October 1 – November 30.

**Western Pennsylvania Temperature Forecast
October - November 2008**



Central Pennsylvania Temperature Forecast October - November 2008



Eastern Pennsylvania Temperature Forecast October - November 2008

