

The Pennsylvania Observer

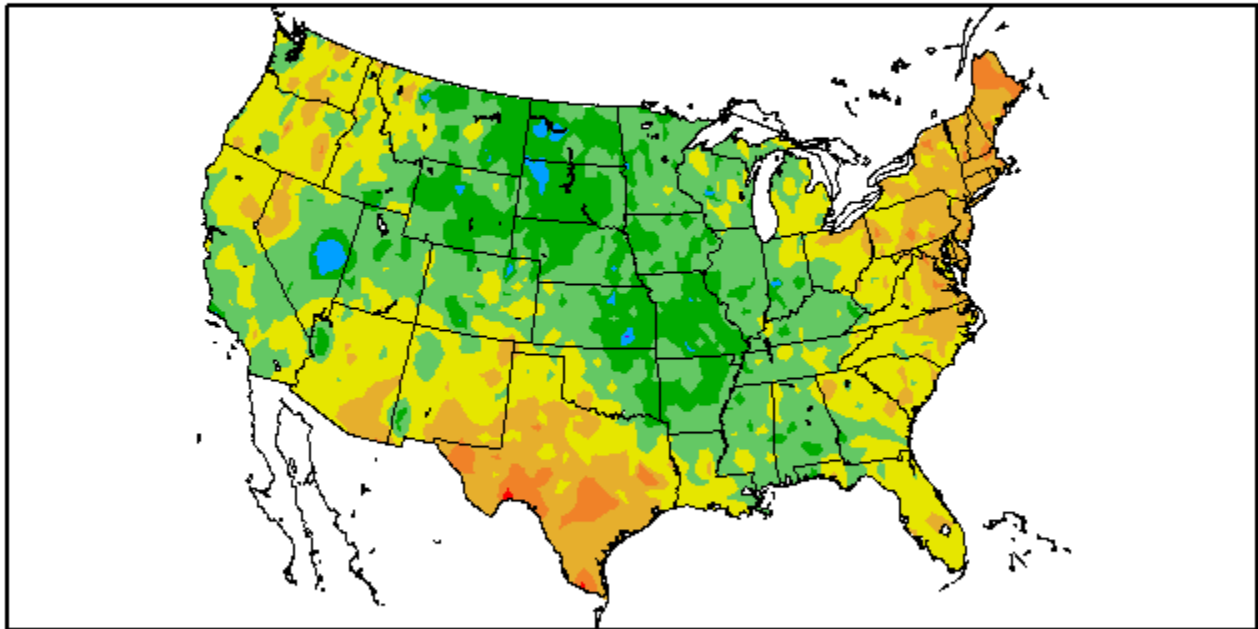


PENNSYLVANIA STATE UNIVERSITY
A Service to the Commonwealth
by the College of Earth and Mineral Sciences

Outlook

Experimental Long Range Forecast for September, October 2009 – Pennsylvania

Departure from Normal Temperature (F)
8/1/2009 – 8/30/2009

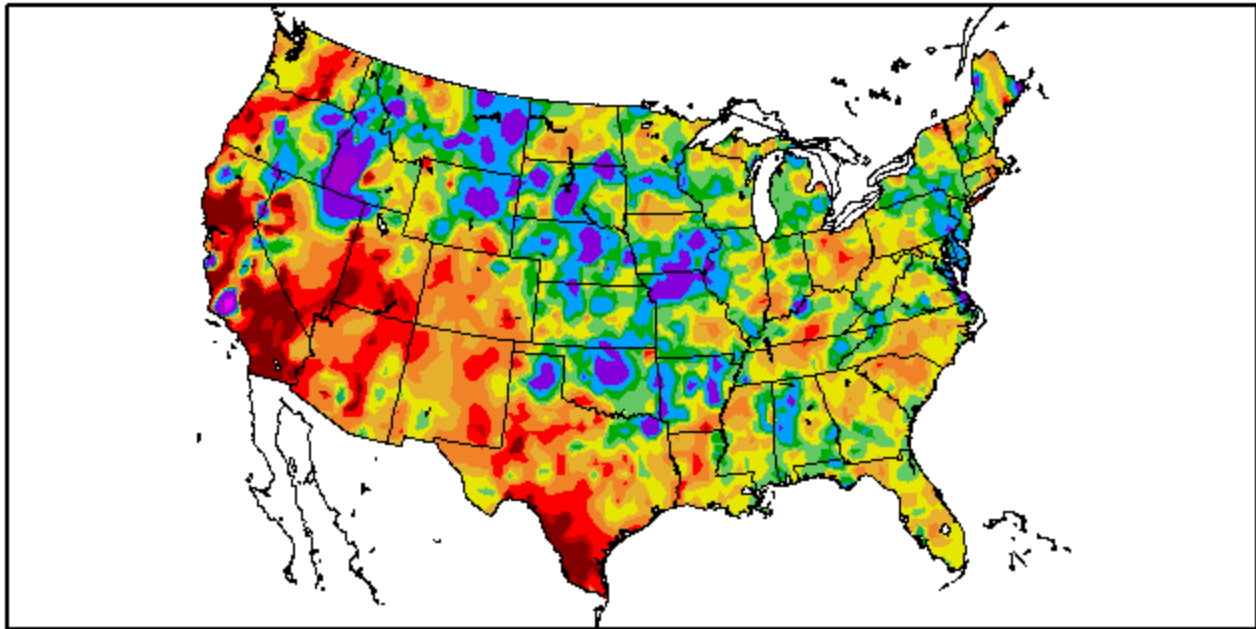


Generated 8/31/2009 at HPRCC using provisional data.

NOAA Regional Climate Centers

Percent of Normal Precipitation (%)

8/1/2009 – 8/30/2009



Generated 8/31/2009 at HPRCC using provisional data.

NOAA Regional Climate Centers

Only the most significant and widespread departures were included in matching the climate division anomalies from August. It was warm in Texas and the Northeast. It was cool from the northeast Rockies to the western mid-Mississippi Valley and it was dry in the Rio Grande Valley and moist in the upper Plains.

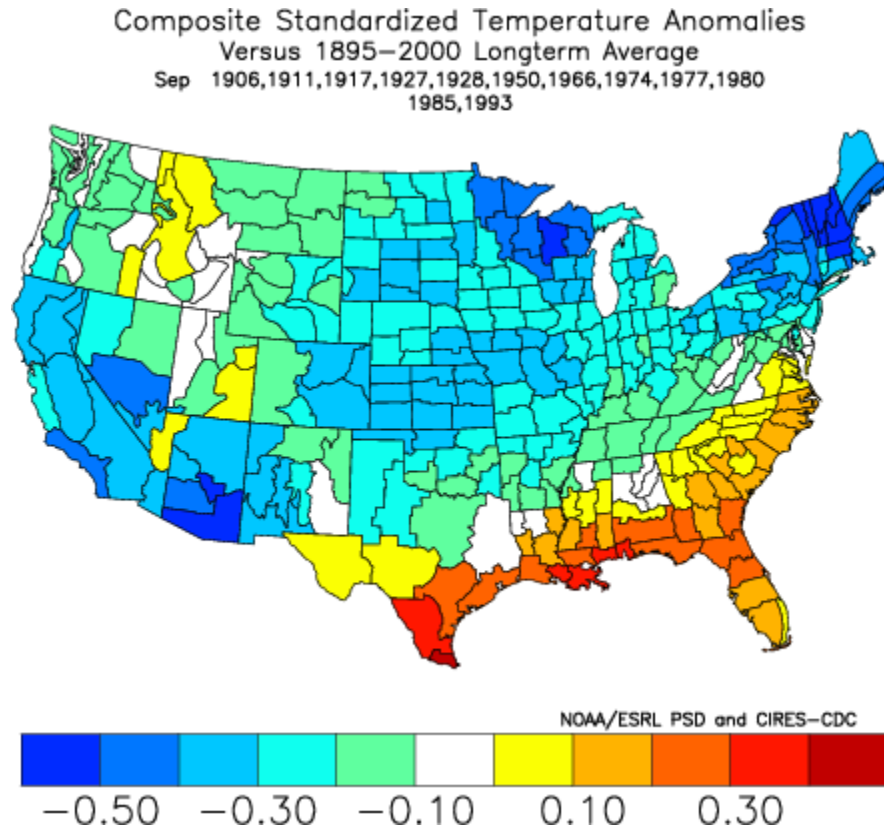
From the 340+ climate divisions, 158 were included in this matching routine.

Year	1977	matches	37.50%	Anom	Regions	62.66%	Climate	Divs
Year	1917	matches	37.50%	Anom	Regions	62.66%	Climate	Divs
Year	1980	matches	25.00%	Anom	Regions	58.23%	Climate	Divs
Year	1927	matches	12.50%	Anom	Regions	53.80%	Climate	Divs
Year	1985	matches	37.50%	Anom	Regions	51.90%	Climate	Divs
Year	1950	matches	25.00%	Anom	Regions	50.63%	Climate	Divs
Year	1928	matches	12.50%	Anom	Regions	50.63%	Climate	Divs
Year	1906	matches	12.50%	Anom	Regions	50.63%	Climate	Divs
Year	1911	matches	25.00%	Anom	Regions	50.00%	Climate	Divs
Year	1993	matches	12.50%	Anom	Regions	50.00%	Climate	Divs
Year	1974	matches	12.50%	Anom	Regions	50.00%	Climate	Divs
Year	1966	matches	12.50%	Anom	Regions	50.00%	Climate	Divs

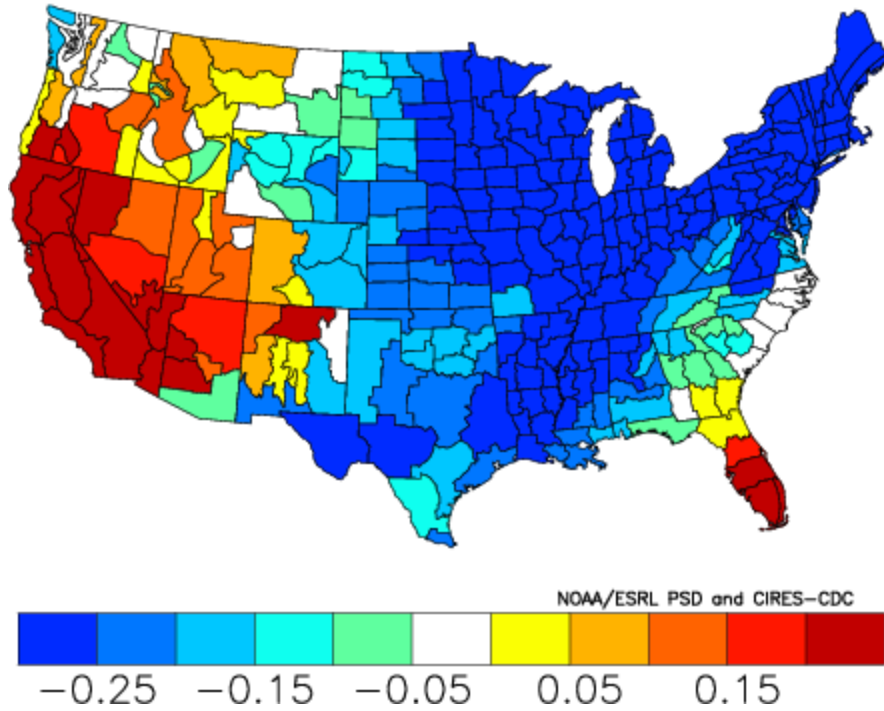
By reviewing the anomalous regions of temperature and precipitation during August 2008, the following years were found to match this configuration:

1906, 1911, 1917, 1927, 1928, 1950, 1966, 1974, 1977, 1980, 1985, 1993

Here are the composite temperatures for September and October in years following similar August conditions to 2008:

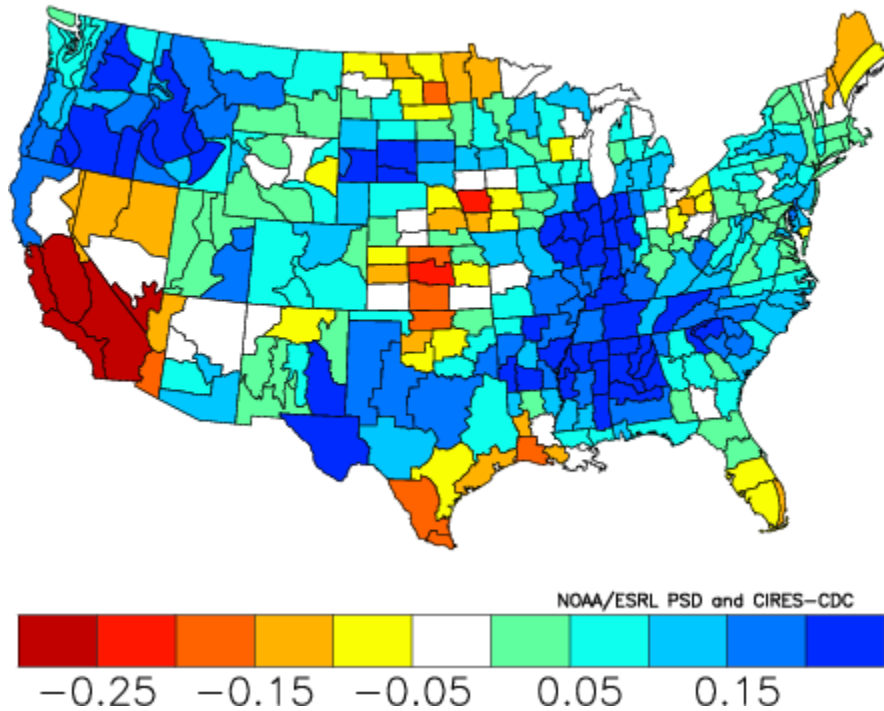


Composite Standardized Temperature Anomalies
Versus 1895–2000 Longterm Average
Oct 1906,1911,1917,1927,1928,1950,1966,1974,1977,1980
1985,1993

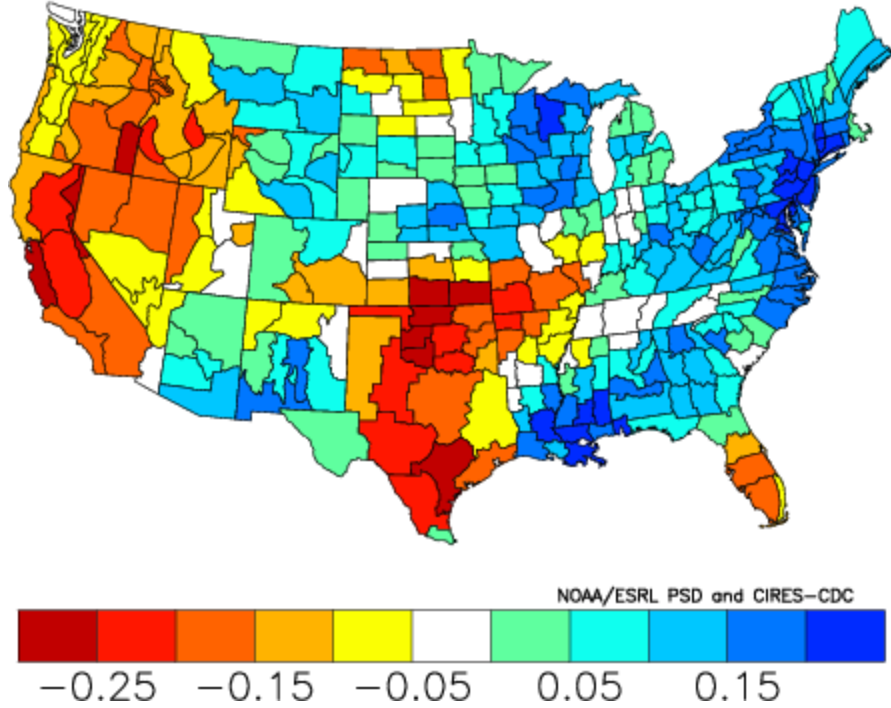


The composite temperature for September shows below average temperatures for the month of September in the northeastern part of the United States. This cool trend strengthens and continues through October.

Composite Standardized Precipitation Anomalies
Versus 1895–2000 Longterm Average
Sep 1906,1911,1917,1927,1928,1950,1966,1974,1977,1980
1985,1993

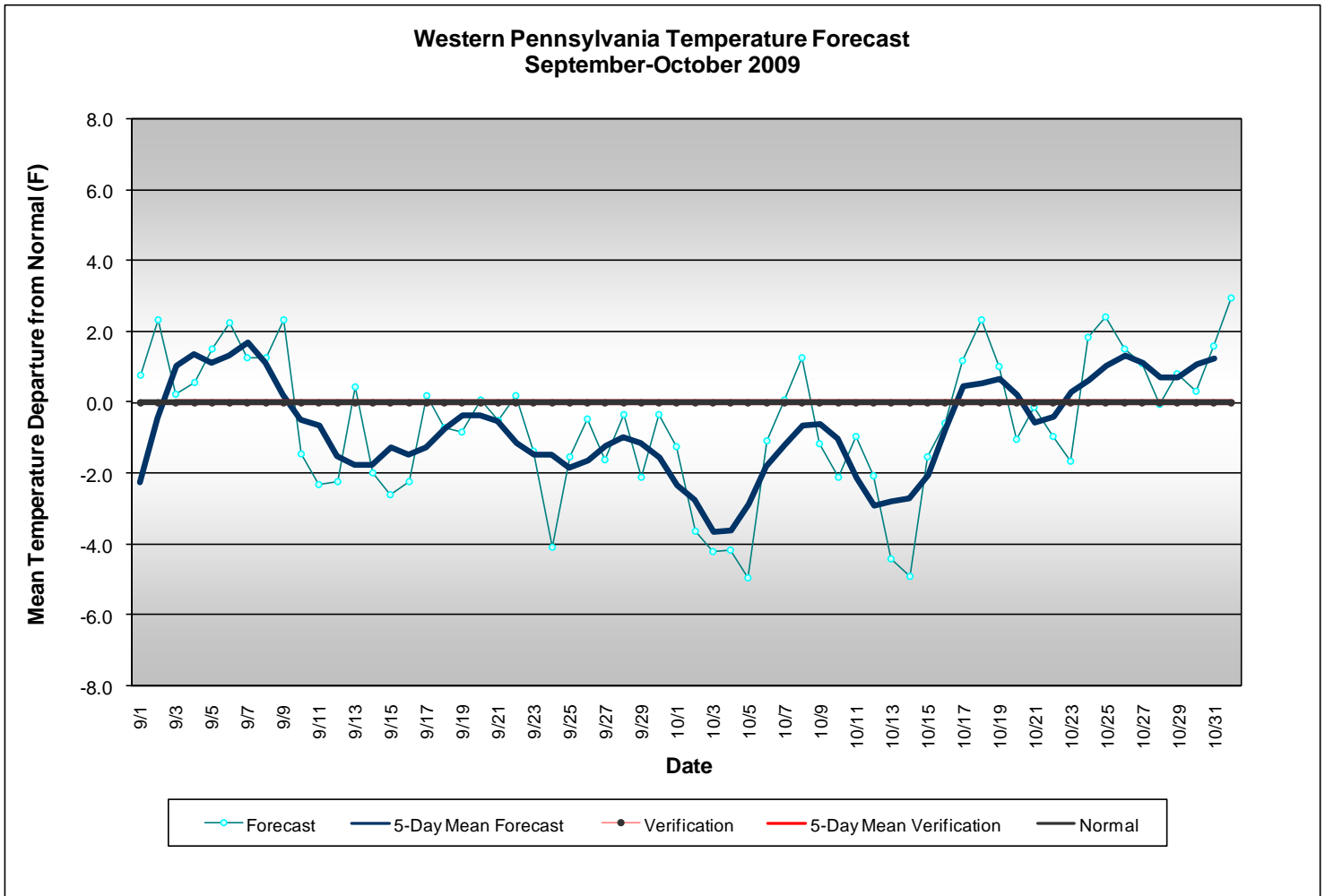


Composite Standardized Precipitation Anomalies
Versus 1895–2000 Longterm Average
Oct 1906,1911,1917,1927,1928,1950,1966,1974,1977,1980
1985,1993

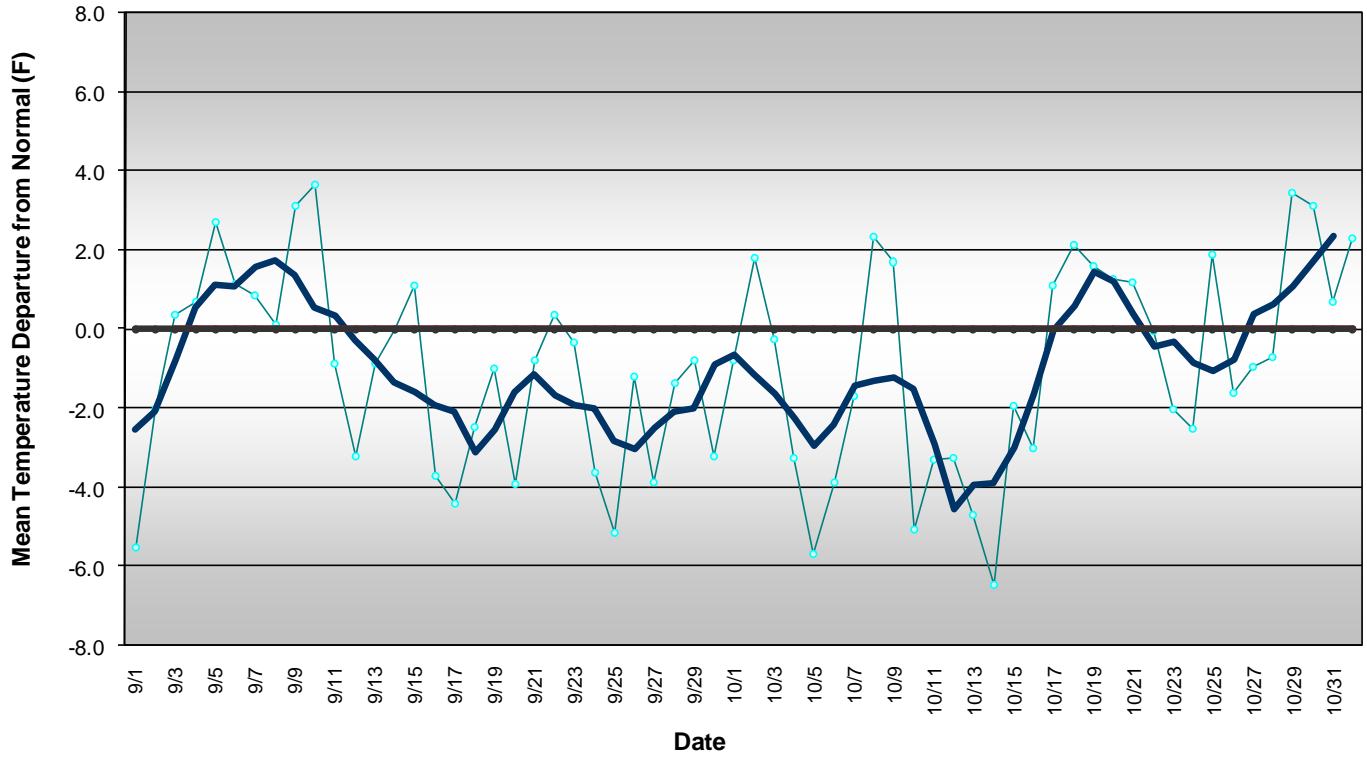


The composite rainfall for September shows generally moist conditions along the spine of the Appalachian Mountains. During October, above average rainfall is expected for much of the Eastern United States.

The years listed above were then used to average the daily departures from normal for temperature by regions of the state.



Central Pennsylvania Temperature Forecast September-October 2009



Eastern Pennsylvania Temperature Forecast September-October 2009

