

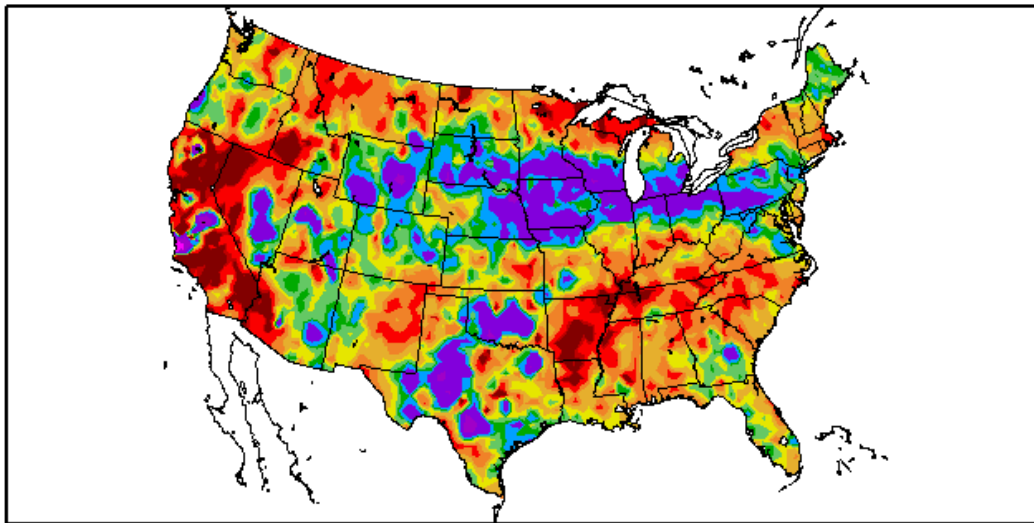
The Pennsylvania Observer



Outlook

Experimental Long Range Outlook for Pennsylvania: September 2007 – October 2007

Percent of Normal Precipitation (%)
8/1/2007 – 8/27/2007

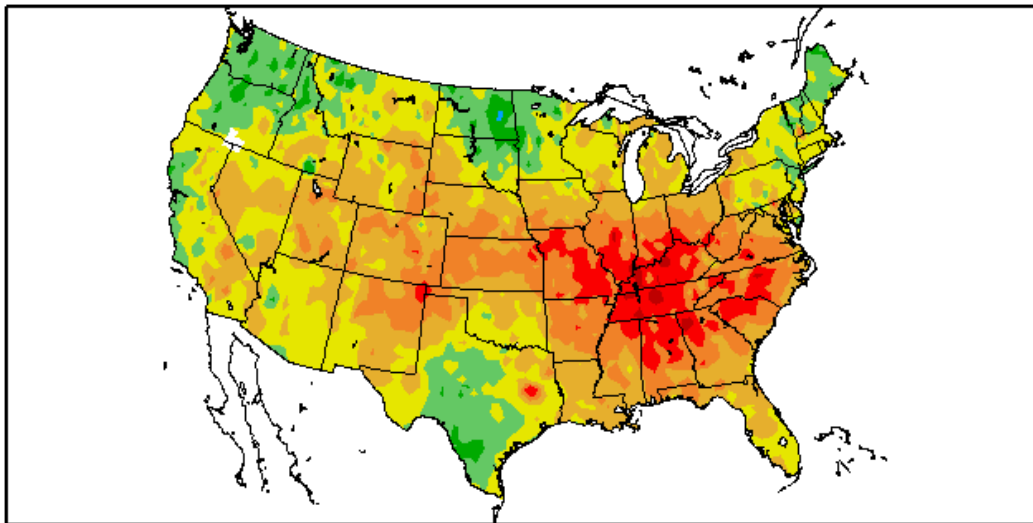


Generated 8/28/2007 at HPRCC using provisional data.

NOAA Regional Climate Centers

Rainfall during August, 2007 was far above normal from Wyoming to western Pennsylvania. It stayed wet in Oklahoma and the wetness shifted west through Texas due to tropical storm Erin. The very dry conditions also shifted west to Arkansas and western Tennessee. The northwest Great Lakes have turned very dry.

Departure from Normal Temperature (F)
8/1/2007 - 8/27/2007



Generated 8/28/2007 at HPRCC using provisional data.

NOAA Regional Climate Centers

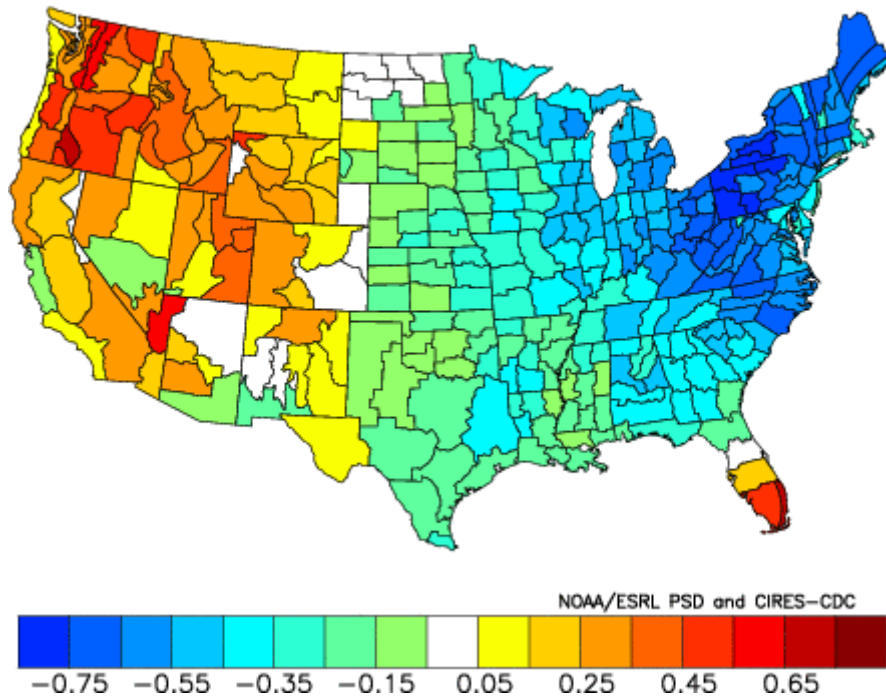
August was one of the hottest in recent memories from Kentucky to northern Alabama. Warmth dominated the region from the Great Basin to the Carolinas. Once again, parts of south Texas were cooler than average as was the eastern Dakotas and the Pacific Northwest.

When combining these anomaly regions, the following Augusts were analogs:

- 1981
- 1980
- 1976
- 1998
- 1955
- 1925
- 1901
- 1999
- 1994
- 1988

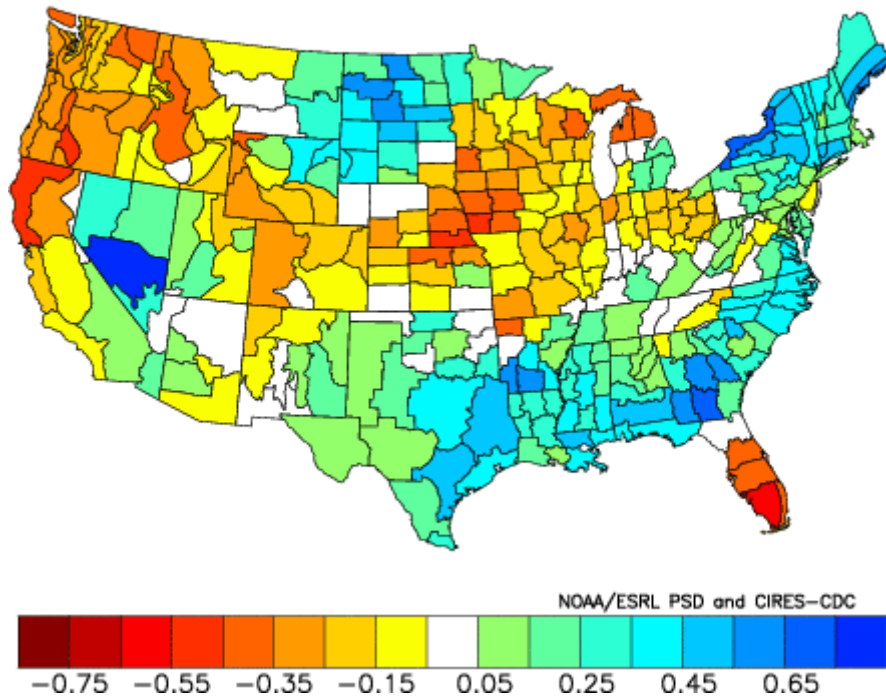
Here is what the combined Sept-Oct precipitation and temperature departures were following the type of August we just experienced:

Composite Standardized Temperature Anomalies
Sep to Oct 1981,1980,1976,1998,1955,1925,1901,1999,1994,1988
Versus 1895–2000 Longterm Average



The message of a much cooler autumn in the Northeast quarter of the nation is distinct. The seat of the warmth shifts into the Pacific Northwest.

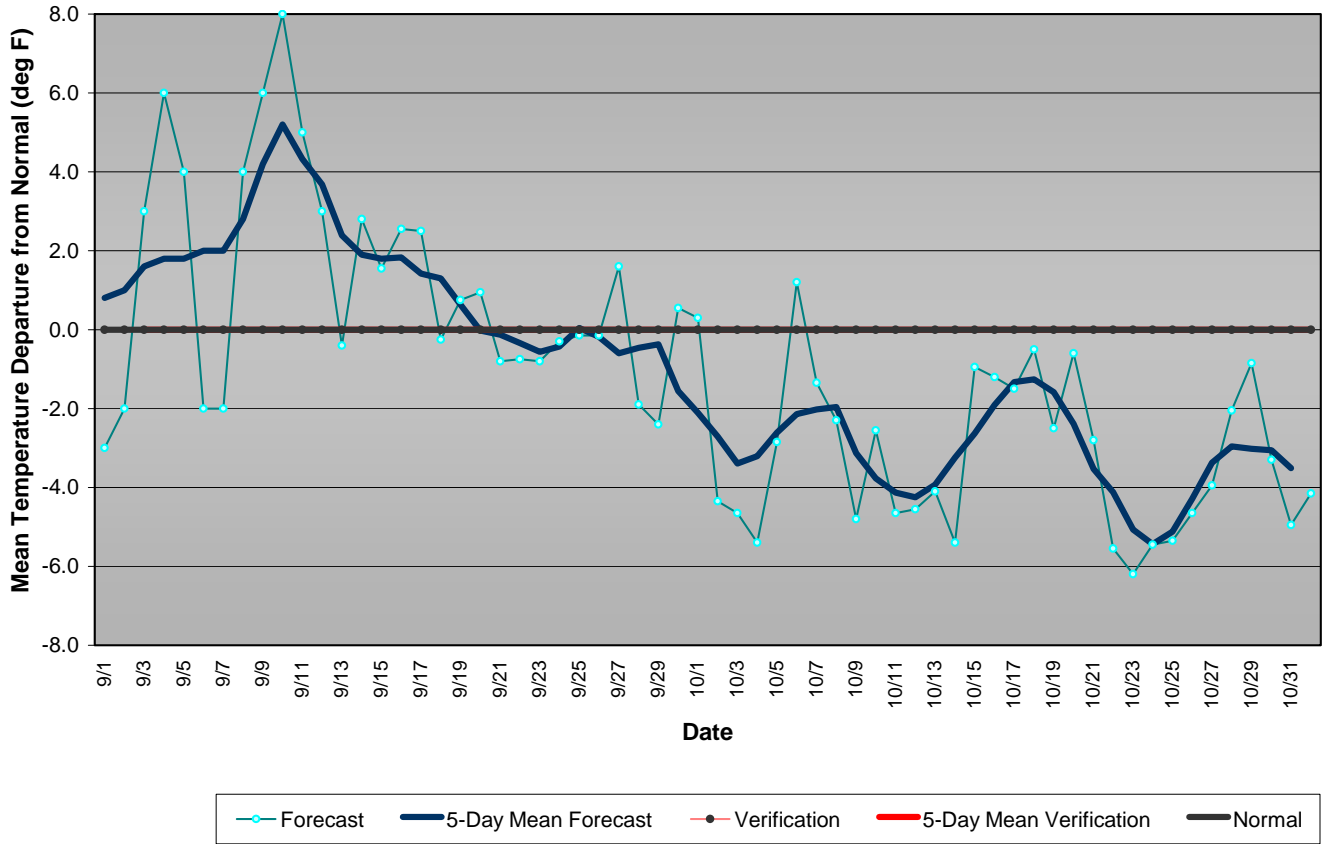
Composite Standardized Precipitation Anomalies
Sep to Oct 1981,1980,1976,1998,1955,1925,1901,1999,1994,1988
Versus 1895–2000 Longterm Average



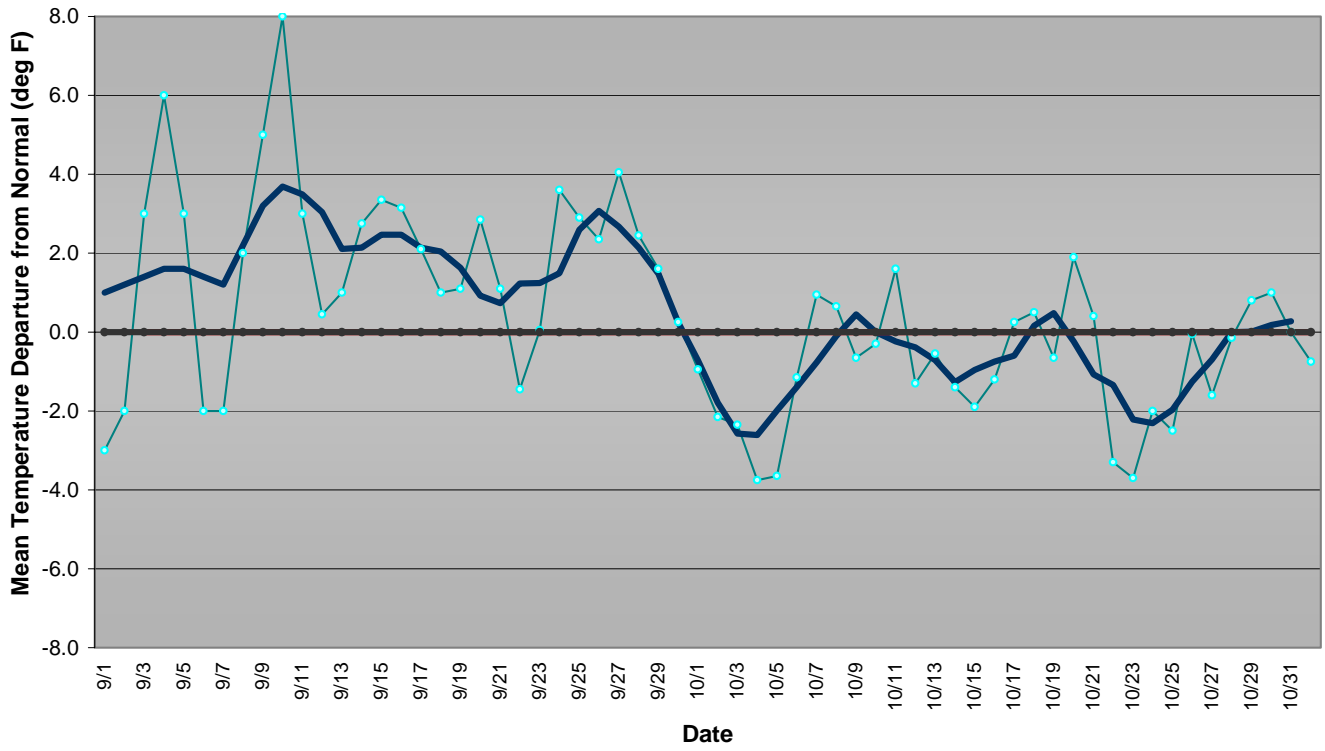
The precipitation pattern shows continued moist conditions for Texas, but some much needed relief from the drought in parts of the Gulf States. New England turns rather moist, though this could be the result of a single event.

Applying those same analog years produced the following daily departures from normal for three regions of Pennsylvania for the period from August 1 – September 30.

Western Pennsylvania Temperature Forecast September-October 2007



Central Pennsylvania Temperature Forecast September-October 2007



Eastern Pennsylvania Temperature Forecast September-October 2007

