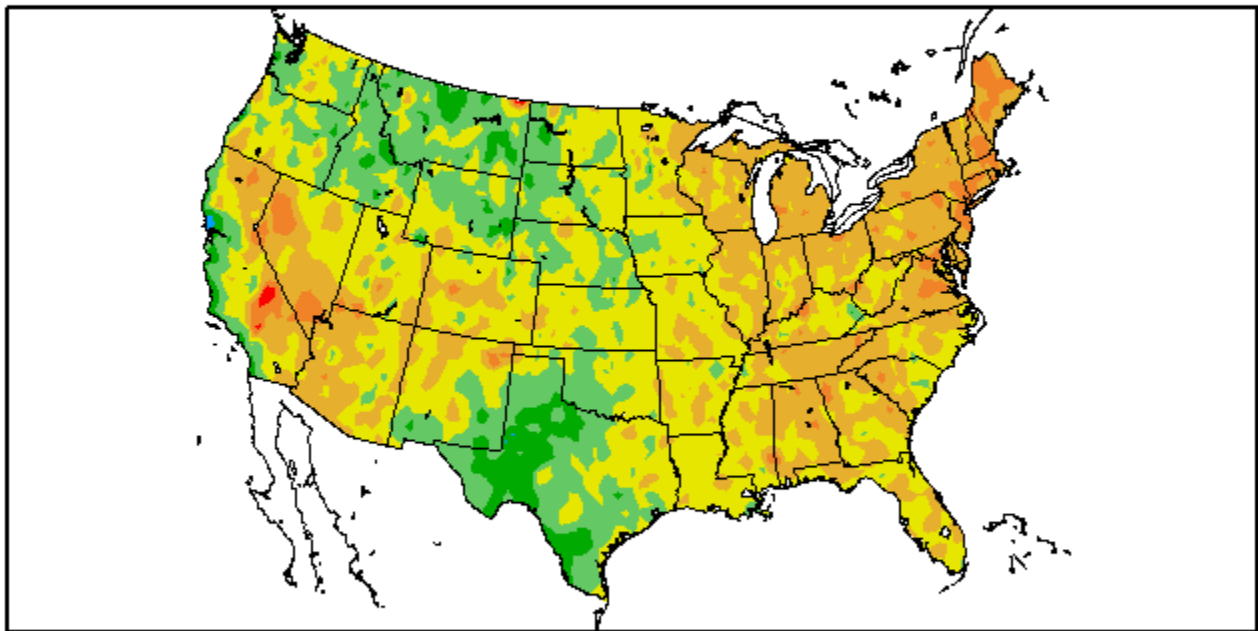


The Pennsylvania Observer



Outlook

Departure from Normal Temperature (F)
7/1/2010 – 7/31/2010

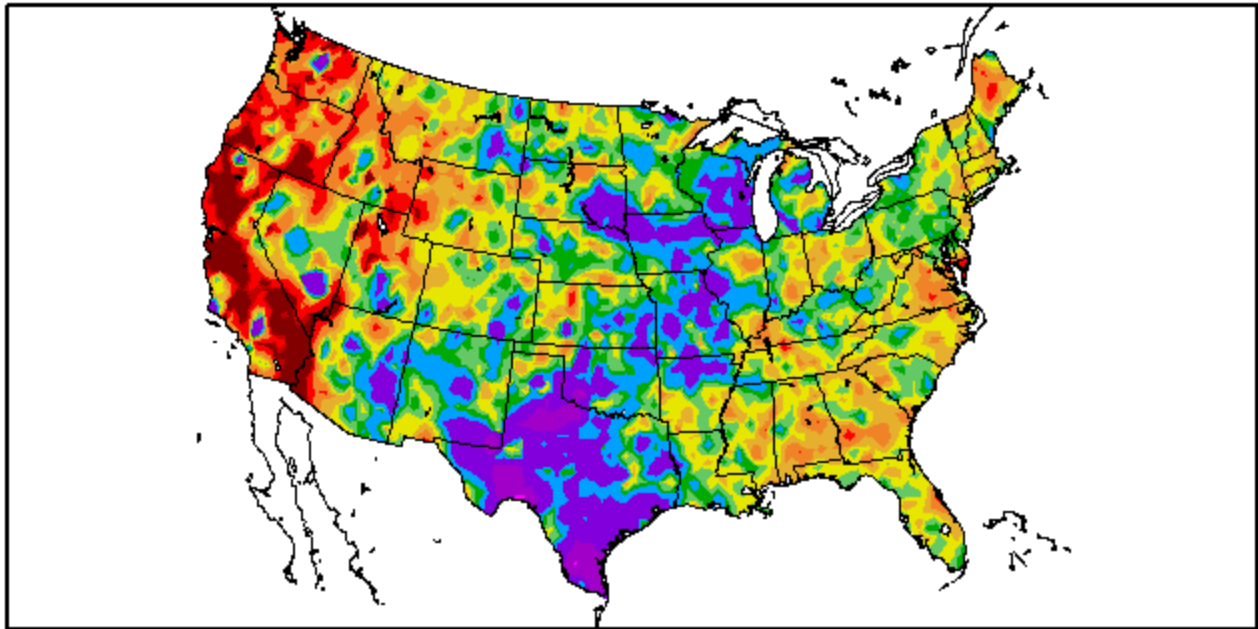


Generated 8/1/2010 at HPRCC using provisional data.

NOAA Regional Climate Centers

A large subtropical ridge caused an intense heat wave to strike the eastern half of the nation during the second full week of July, leading to above average temperatures for the month. Parts of southern California and western Nevada also felt the warmth from above average temperatures.

Percent of Normal Precipitation (%)
7/1/2010 – 7/31/2010



Generated 8/1/2010 at HPRCC using provisional data.

NOAA Regional Climate Centers

Tropical moisture from Hurricane Alex interacting with several upper level disturbances caused widespread flooding over Texas during the first week of July. In addition to Texas, many of the Interior Plains states received above average precipitation for July. In contrast, precipitation was scarce in locations along the West Coast.

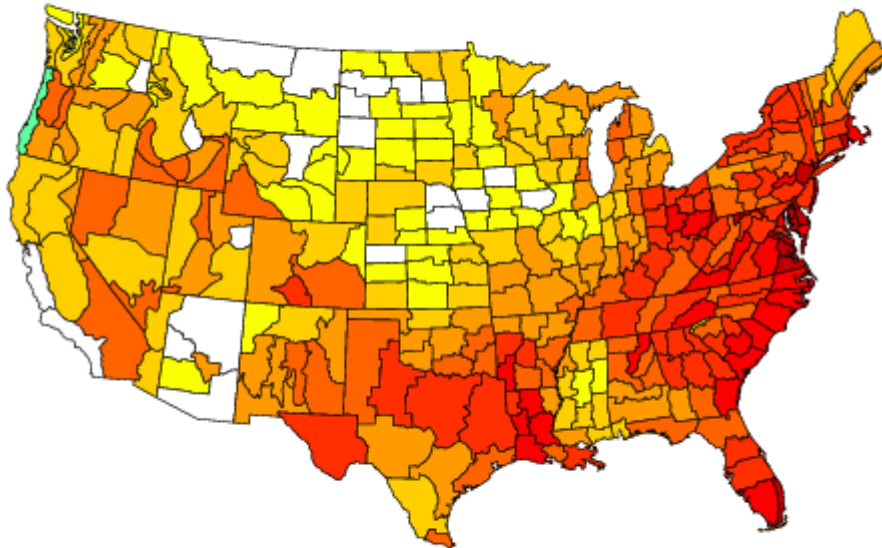
When the previous conditions were compared with previous July's on a climate division level, the following years were selected as close analogs: **1931, 1952, 2002, 1901, 1934, 1999, 1993, 1949, 1955, 2005.**

Below are the conditions nationwide during the August-September that followed:

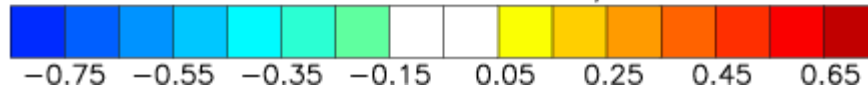
Composite Standardized Temperature Anomalies

Versus 1895–2000 Longterm Average

Aug 1931,1952,2002,1901,1934,1999,1993,1949,1955,2005
1987,1921



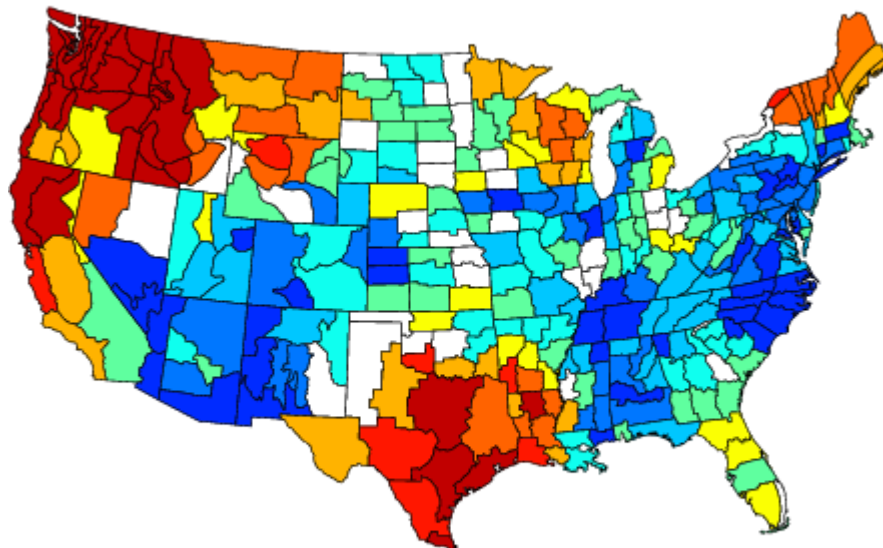
NOAA/ESRL PSD and CIRES–CDC



Composite Standardized Precipitation Anomalies

Versus 1895–2000 Longterm Average

Aug 1931,1952,2002,1901,1934,1999,1993,1949,1955,2005
1987,1921

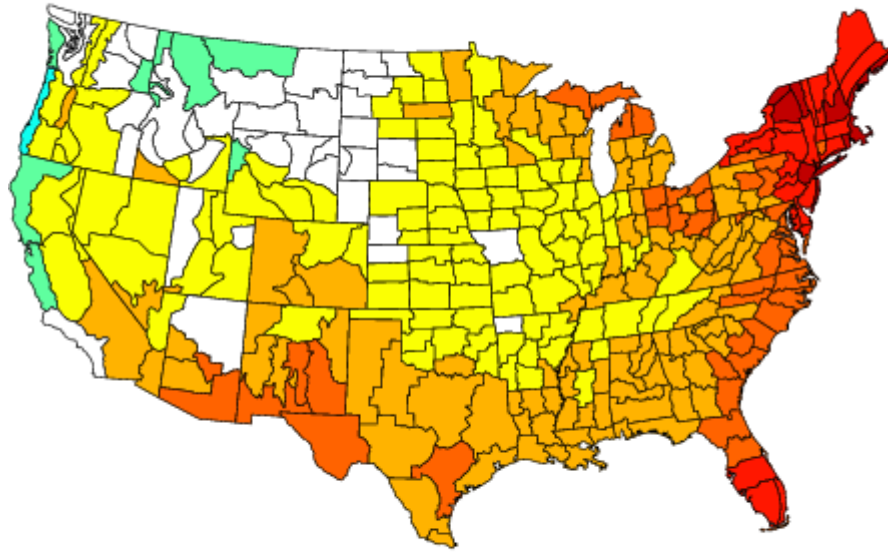


NOAA/ESRL PSD and CIRES–CDC

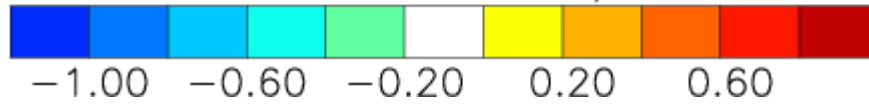


Composite Standardized Temperature Anomalies
Versus 1895–2000 Longterm Average

Sep 1931, 1952, 2002, 1901, 1934, 1999, 1993, 1949, 1955, 2005
1987, 1921

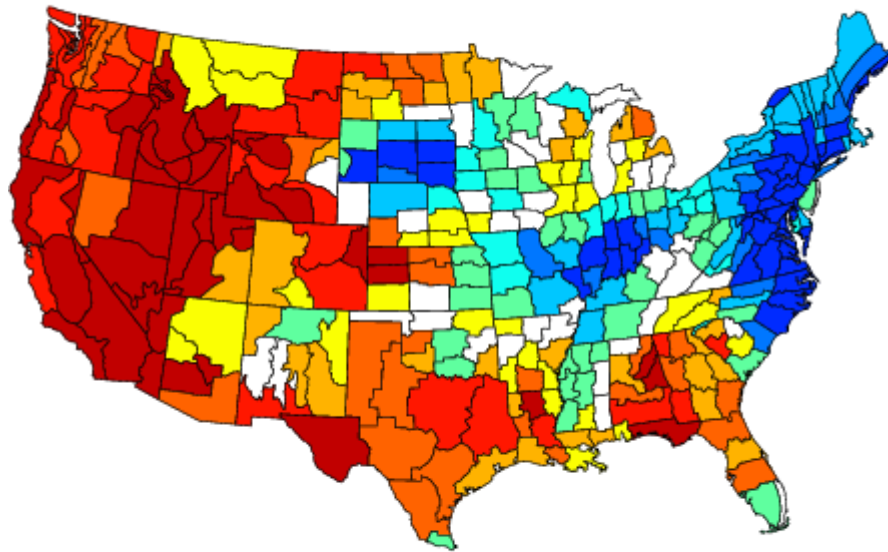


NOAA/ESRL PSD and CIRES–CDC



Composite Standardized Precipitation Anomalies
Versus 1895–2000 Longterm Average

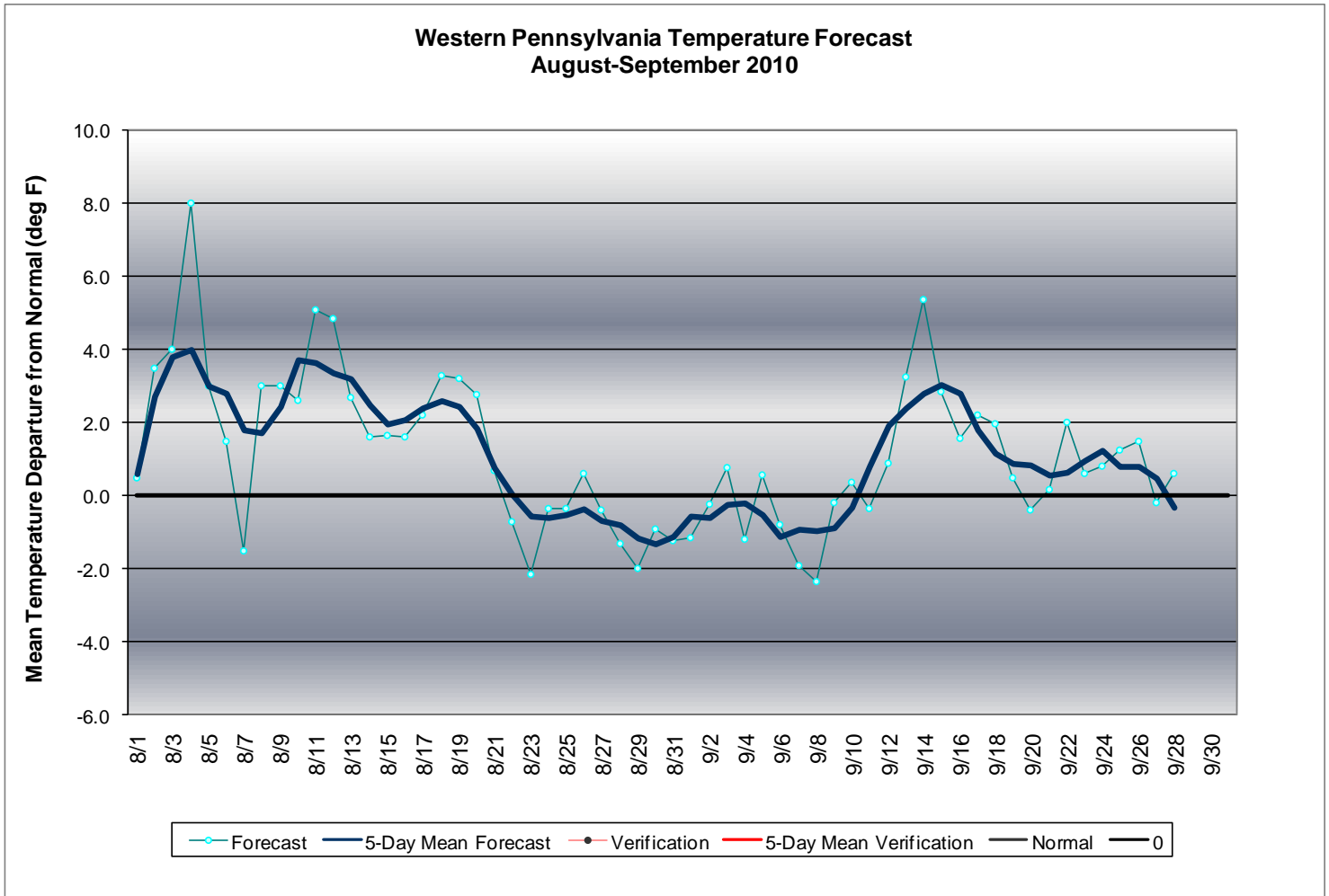
Sep 1931, 1952, 2002, 1901, 1934, 1999, 1993, 1949, 1955, 2005
1987, 1921



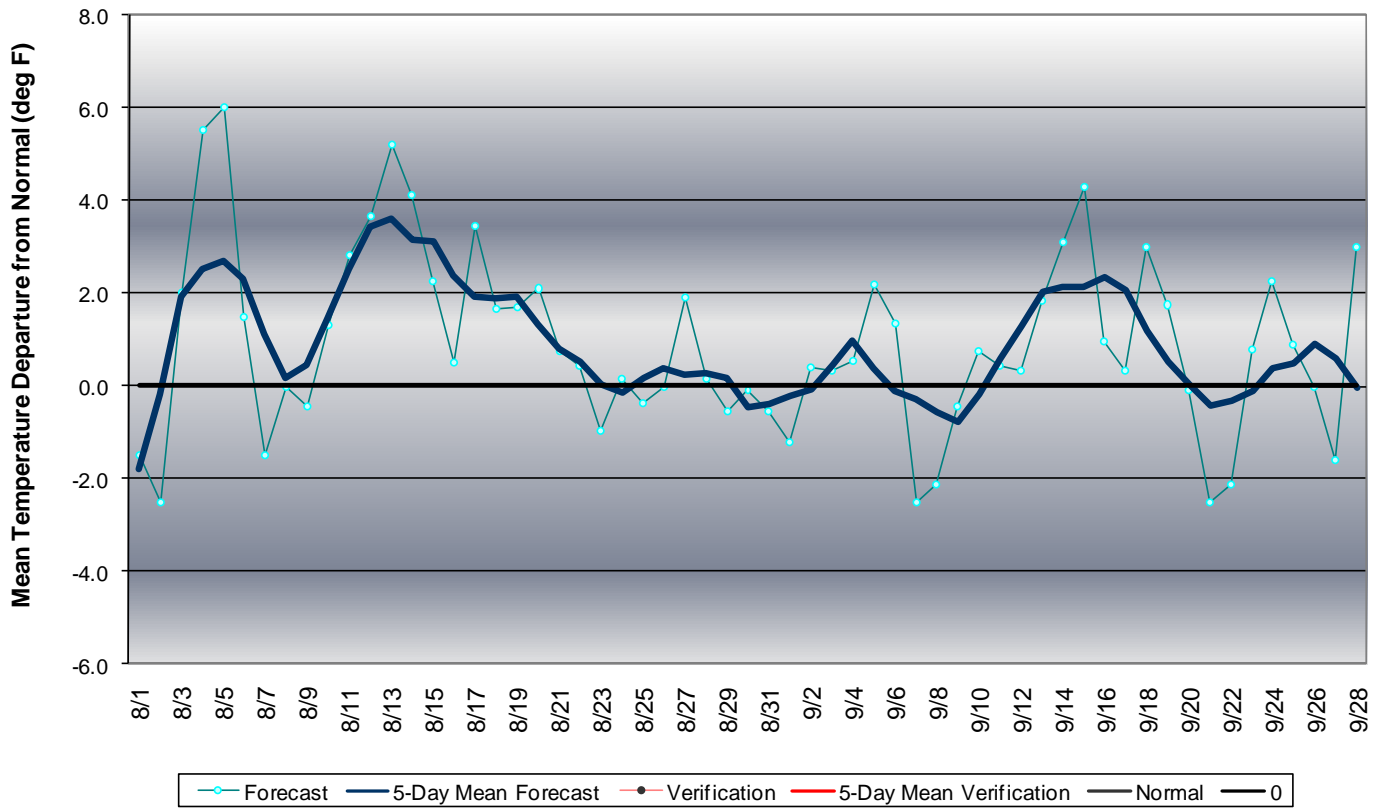
NOAA/ESRL PSD and CIRES–CDC



Applying those same analog years produced the following daily departures from normal for three regions of Pennsylvania for the period from August – September.



Central Pennsylvania Temperature Forecast August-September 2010



Eastern Pennsylvania Temperature Forecast August-September 2010

