

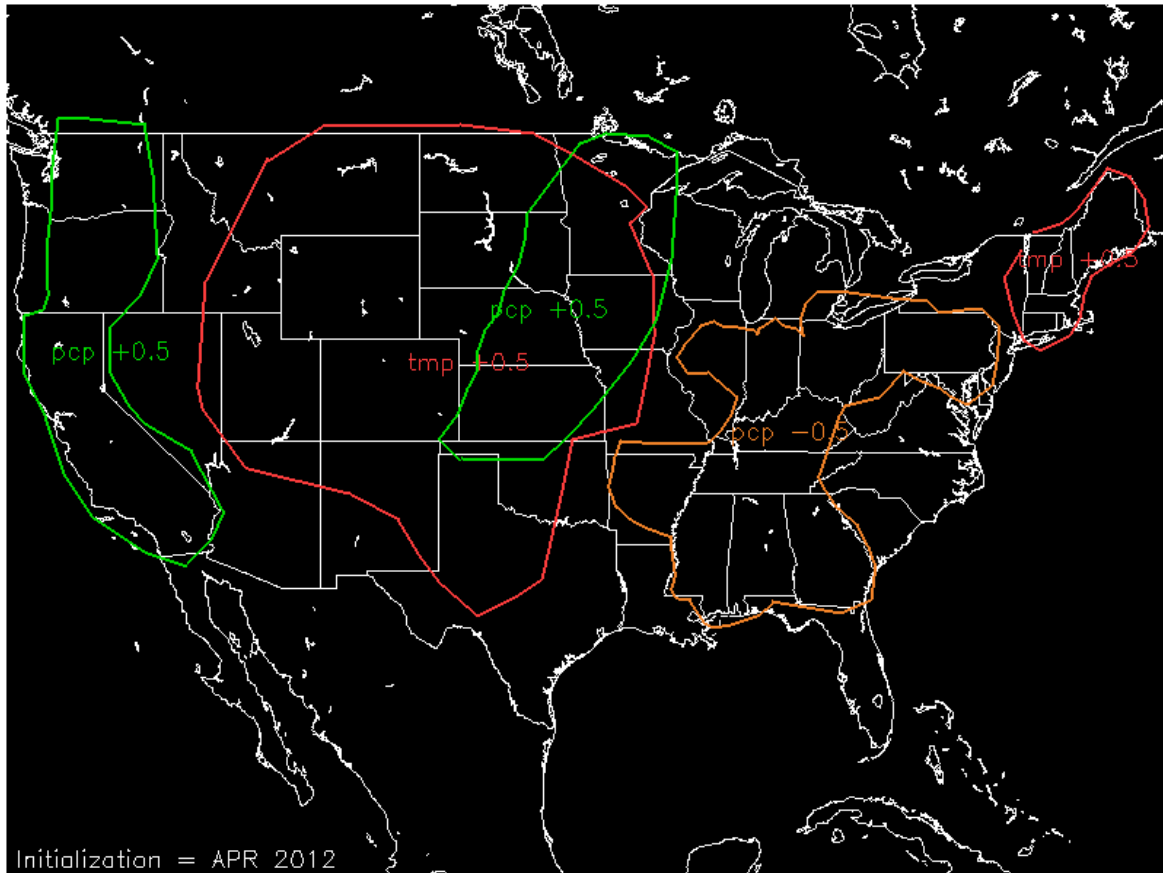
# *The Pennsylvania Observer*



## LONG RANGE OUTLOOK

*By: Steven Engblom*

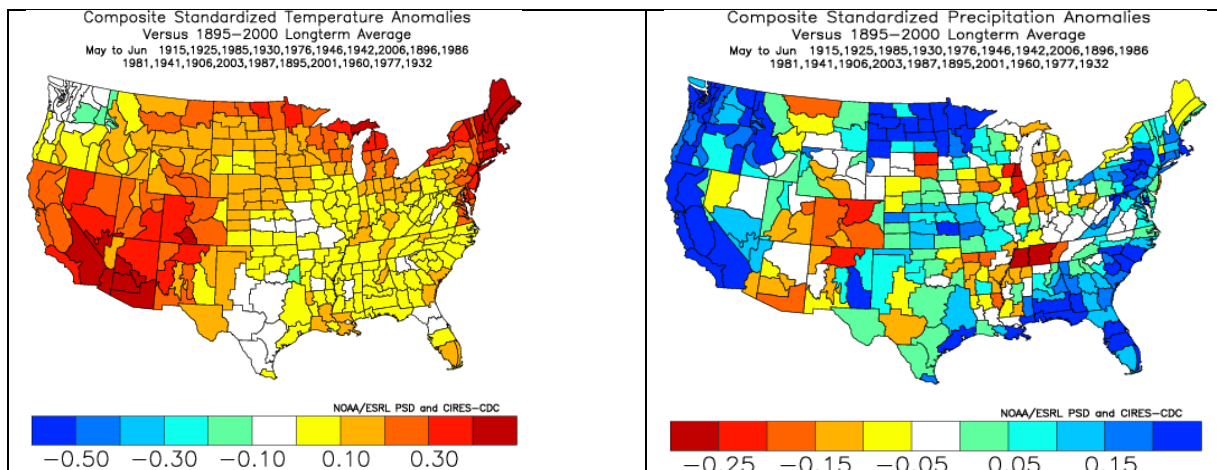
The following map indicates precipitation and temperature anomalies (indicated by standard deviation values) for the month of April 2012:



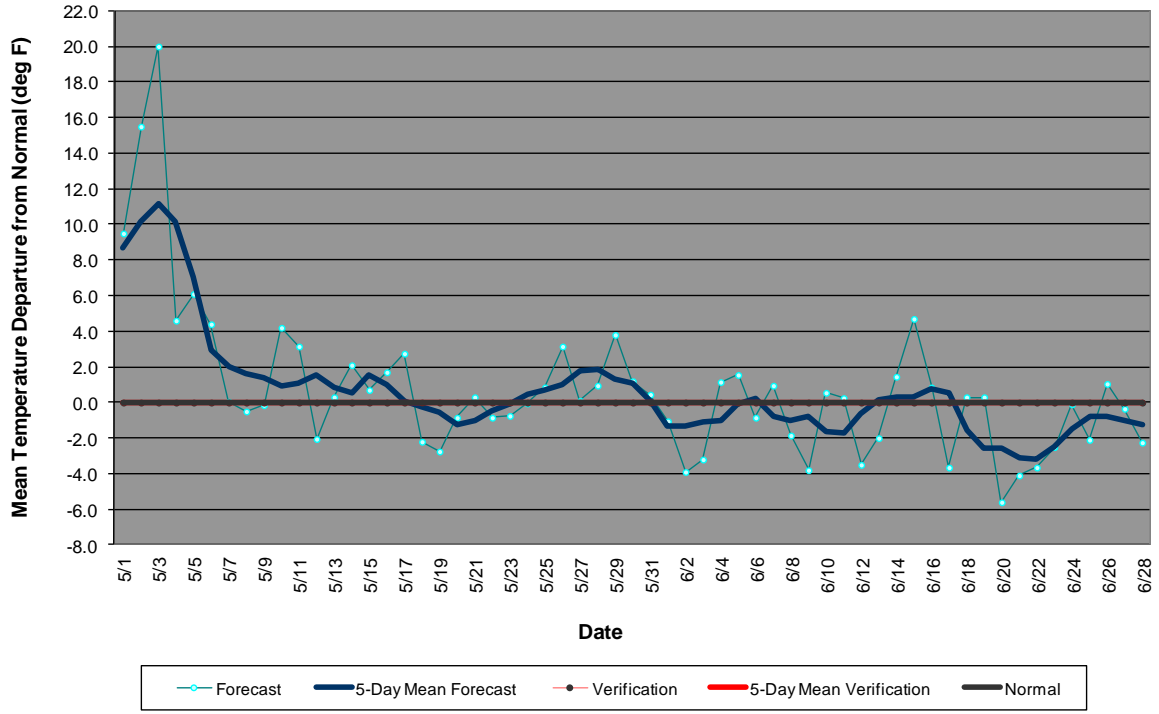
When these anomalous temperature and precipitation regions are matched with the 345 climate divisions nationwide with April data for the past 117 years, the following years show some commonality:

Year 1915 matches 42.86% Anom Regions 78.40% Climate Divs  
 Year 1925 matches 42.86% Anom Regions 77.60% Climate Divs  
 Year 1985 matches 42.86% Anom Regions 74.80% Climate Divs  
 Year 1930 matches 28.57% Anom Regions 69.60% Climate Divs  
 Year 1976 matches 57.14% Anom Regions 69.20% Climate Divs  
 Year 1946 matches 28.57% Anom Regions 64.00% Climate Divs  
 Year 1942 matches 42.86% Anom Regions 62.40% Climate Divs  
 Year 2006 matches 42.86% Anom Regions 61.60% Climate Divs  
 Year 1896 matches 42.86% Anom Regions 61.60% Climate Divs  
 Year 1986 matches 57.14% Anom Regions 60.40% Climate Divs  
 Year 1981 matches 28.57% Anom Regions 60.40% Climate Divs  
 Year 1987 matches 42.86% Anom Regions 58.40% Climate Divs  
 Year 1941 matches 42.86% Anom Regions 56.80% Climate Divs  
 Year 1906 matches 28.57% Anom Regions 56.80% Climate Divs  
 Year 2003 matches 28.57% Anom Regions 56.40% Climate Divs  
 Year 1895 matches 28.57% Anom Regions 56.40% Climate Divs  
 Year 2001 matches 28.57% Anom Regions 54.40% Climate Divs  
 Year 1960 matches 28.57% Anom Regions 54.00% Climate Divs  
 Year 1977 matches 28.57% Anom Regions 51.20% Climate Divs  
 Year 1932 matches 28.57% Anom Regions 51.20% Climate Divs

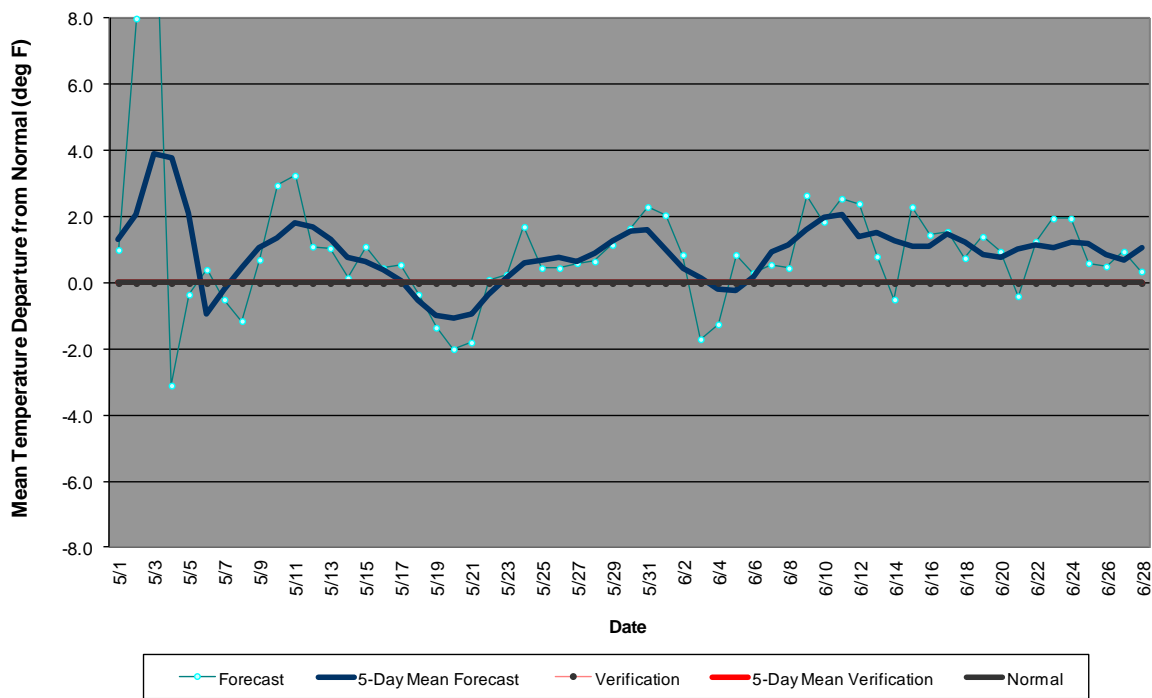
When utilizing all the years listed above as analogies for the following May-June, these are the anomalies noted for temperature (left) and precipitation (right):



### Western Pennsylvania Temperature Forecast May - June 2012



### Central Pennsylvania Temperature Forecast May- June 2012



### Eastern Pennsylvania Temperature Forecast May - June 2012

