

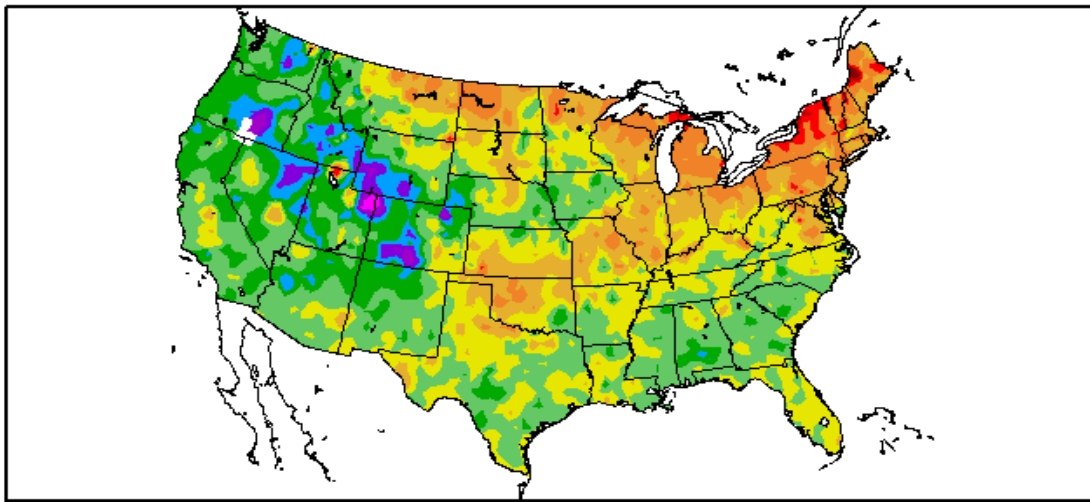
The Pennsylvania Observer



Outlook

Experimental Long Range Outlook for Pennsylvania: February – March 2008

Departure from Normal Temperature (F)
1/1/2008 – 1/29/2008

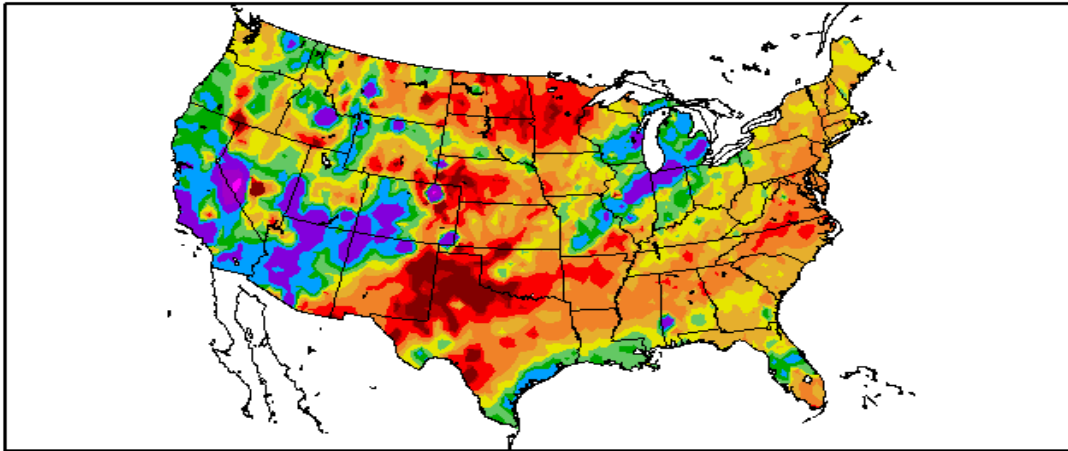


Generated 1/30/2008 at HPRCC using provisional data.

NOAA Regional Climate Centers

The pattern during January, 2008 favored above seasonal temperatures from the northern Plains into the Northeast as well as a swath from Oklahoma to the Middle Atlantic states. It was cooler than average in the South and rather cold in the Rockies and along the West Coast.

Percent of Normal Precipitation (%)
1/1/2008 - 1/29/2008



Generated 1/30/2008 at HPRCC using provisional data.

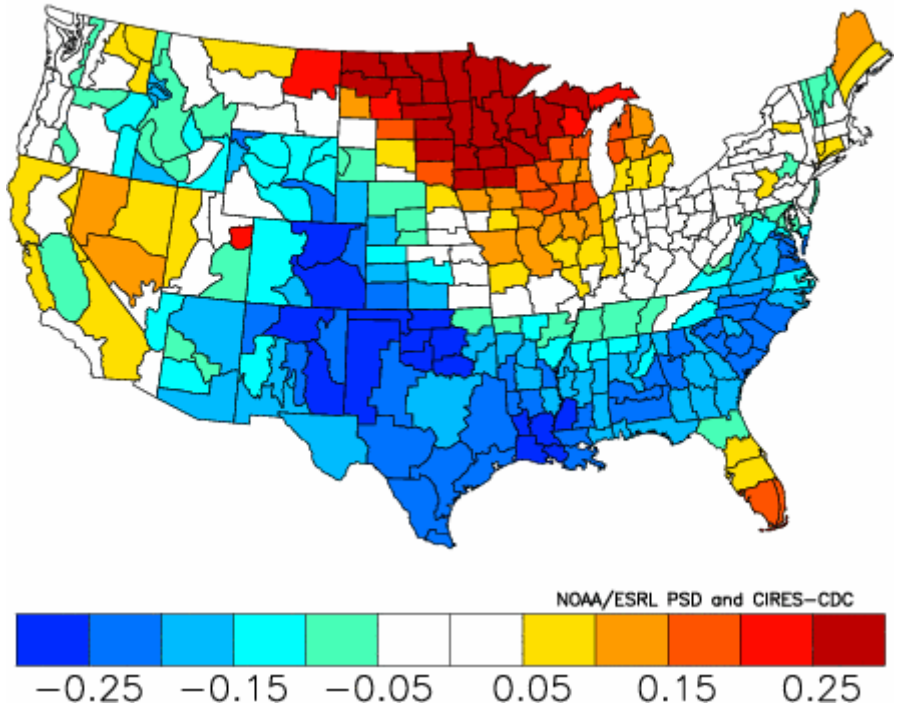
NOAA Regional Climate Centers

Precipitation was sparse in the Plains and along most of the Eastern Seaboard. It was wetter than average in the western Gulf and in a swath from Missouri to Michigan. The southern Rockies were quite moist as was California.

Analogs were based on the warmth across the northern tier and chill in the western states. Precipitation matches were based on the widespread dryness from the southern Rockies to the Middle Atlantic and a corridor of wetness in the southern-central Great Lakes as well as the Southwest.

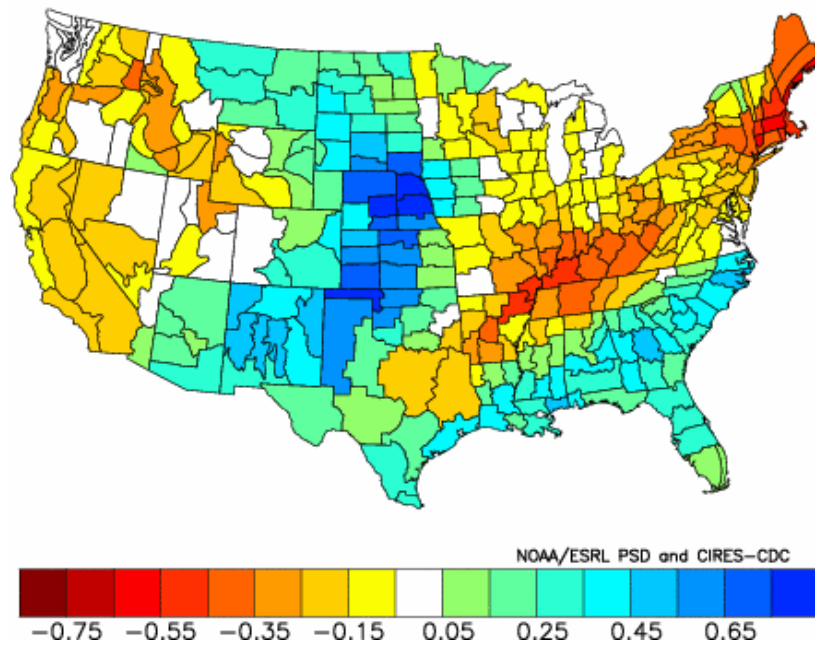
The following years served as a match: 1905, 1908, 1915, 1928 and 1929, 1942, 1957, 1971, 1982 and 1987.

Composite Standardized Temperature Anomalies
Feb to Mar 1905,1908,1915,1928,1929,1942,1957,1971,1982,1987
Versus 1895–2000 Longterm Average



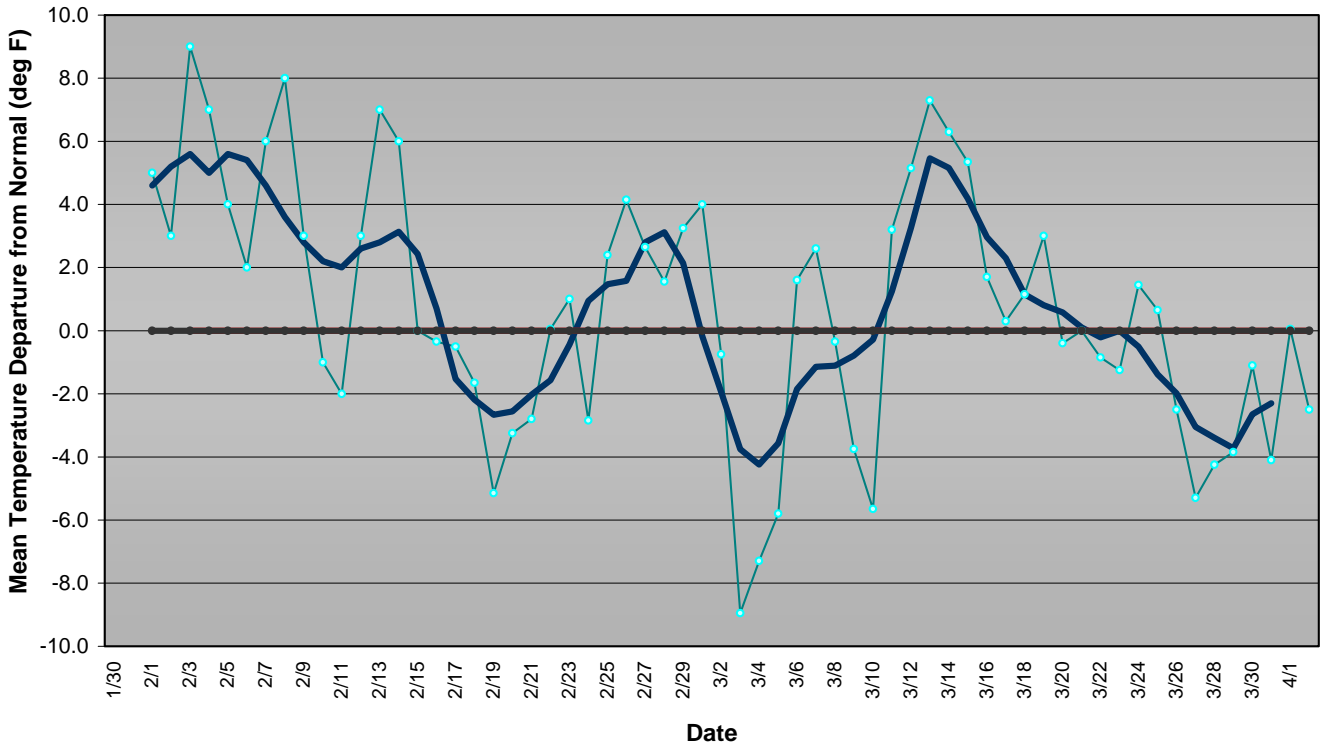
A pattern of temperatures can be easily seen, as warmer than average temperatures will invade the northern sections of the countries, while cooler than average temperatures will occupy most of the lower third. Cold temperatures will extend from the mid western states all the way into the Middle Atlantic States. A visible trough can be diagnosed that snakes its way through the upper portion of the country, where temperatures will remain relatively normal.

Composite Standardized Precipitation Anomalies
Feb to Mar 1905,1908,1915,1928,1929,1942,1957,1971,1982,1987
Versus 1895–2000 Longterm Average

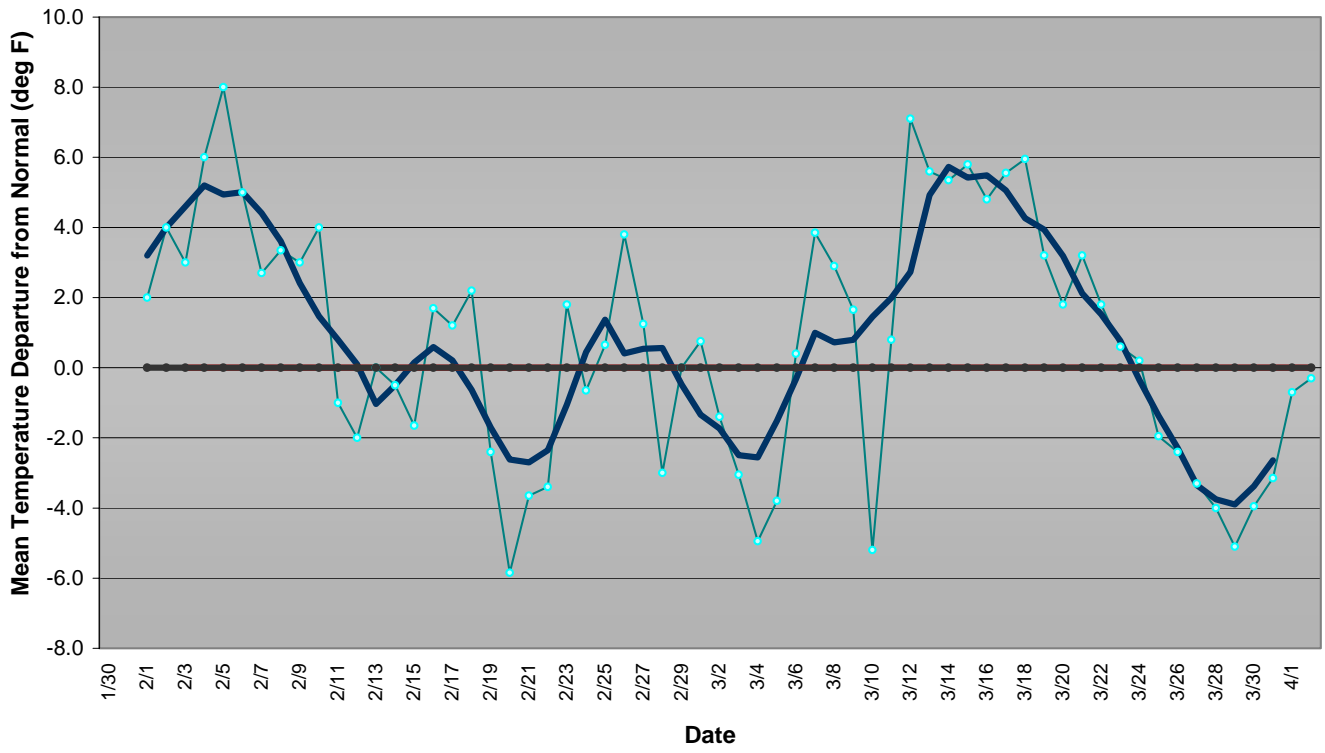


The long range forecast indicates that the NE and Mid-Atlantic states should remain relatively dry for the months of Feb-Mar. In the heart country, states can expect a wetter than average trend throughout the latter winter months, while the western states will remain average to slightly above average.

Western Pennsylvania Temperature Forecast February - March 2008



Central Pennsylvania Temperature Forecast February - March 2008



Eastern Pennsylvania Temperature Forecast February - March 2008

